

Oklahoma Corporation Commission
Oil & Gas Conservation Division
Post Office Box 52000
Oklahoma City, Oklahoma 73152-2000
Rule 165: 10-3-25

Form 1002A

API No.: 35003227100002

Completion Report

Spud Date: September 16, 2013

OTC Prod. Unit No.:

Drilling Finished Date: October 18, 2013

Amended

1st Prod Date:

Amend Reason: RECOMPLETION

Completion Date: October 28, 2013

Recomplete Date: May 18, 2016

Drill Type: STRAIGHT HOLE

SERVICE WELL

Well Name: COLUMBIA 36-27-12 SWD 1

Purchaser/Measurer:

Location: ALFALFA 36 27N 12W
NW NW NW NW
260 FNL 260 FWL of 1/4 SEC
Derrick Elevation: 1279 Ground Elevation: 1257

First Sales Date:

Operator: CHESAPEAKE OPERATING LLC 17441
PO BOX 18496
6100 N WESTERN AVE
OKLAHOMA CITY, OK 73154-0496

Completion Type	
X	Single Zone
	Multiple Zone
	Commingled

Location Exception	
Order No	
There are no Location Exception records to display.	

Increased Density	
Order No	
There are no Increased Density records to display.	

Casing and Cement							
Type	Size	Weight	Grade	Feet	PSI	SAX	Top of CMT
SURFACE	18 5/8	87.5	J-55	310		571	SURFACE
INTERMEDIATE	13 3/8	54.5	J-55	1515		763	SURFACE
PRODUCTION	9 5/8	40	K-55	6548		670	2600

Liner								
Type	Size	Weight	Grade	Length	PSI	SAX	Top Depth	Bottom Depth
There are no Liner records to display.								

Total Depth: 7902

Packer	
Depth	Brand & Type
6040	WEATHERFORD
6518	HALLIBURTON PERMAPAK

Plug	
Depth	Plug Type
6405	CEMENT
6410	CIBP
7525	CEMENT
7611	CEMENT

Initial Test Data										
Test Date	Formation	Oil BBL/Day	Oil-Gravity (API)	Gas MCF/Day	Gas-Oil Ratio Cu FT/BBL	Water BBL/Day	Pumpin or Flowing	Initial Shut-In Pressure	Choke Size	Flow Tubing Pressure
There are no Initial Data records to display.										

Completion and Test Data by Producing Formation																						
Formation Name: SIMPSON			Code: 202SMPS				Class: DISP															
<table border="1"> <thead> <tr> <th colspan="2">Spacing Orders</th> </tr> <tr> <th>Order No</th> <th>Unit Size</th> </tr> </thead> <tbody> <tr> <td colspan="2">There are no Spacing Order records to display.</td> </tr> </tbody> </table>					Spacing Orders		Order No	Unit Size	There are no Spacing Order records to display.		<table border="1"> <thead> <tr> <th colspan="2">Perforated Intervals</th> </tr> <tr> <th>From</th> <th>To</th> </tr> </thead> <tbody> <tr> <td>6164</td> <td>6314</td> </tr> </tbody> </table>						Perforated Intervals		From	To	6164	6314
Spacing Orders																						
Order No	Unit Size																					
There are no Spacing Order records to display.																						
Perforated Intervals																						
From	To																					
6164	6314																					
<table border="1"> <thead> <tr> <th colspan="2">Acid Volumes</th> </tr> </thead> <tbody> <tr> <td colspan="2">3,000 GALLONS 10% ACID</td> </tr> </tbody> </table>					Acid Volumes		3,000 GALLONS 10% ACID		<table border="1"> <thead> <tr> <th colspan="2">Fracture Treatments</th> </tr> </thead> <tbody> <tr> <td colspan="2">There are no Fracture Treatments records to display.</td> </tr> </tbody> </table>						Fracture Treatments		There are no Fracture Treatments records to display.					
Acid Volumes																						
3,000 GALLONS 10% ACID																						
Fracture Treatments																						
There are no Fracture Treatments records to display.																						
Formation Name: ARBUCKLE			Code: 169ABCK				Class: DRY															
Formation Name: REAGAN			Code: 153REGN				Class: DRY															

Formation	Top
SIMPSON	6159
ARBUCKLE	6487
REAGAN	7629

Were open hole logs run? Yes
Date last log run: October 16, 2013
Were unusual drilling circumstances encountered? No
Explanation:

Other Remarks
UIC APPLICATION NUMBER 1608890013 (MODIFICATION OF CURRENT UIC PERMIT NUMBER 1401400021)

FOR COMMISSION USE ONLY	
Status: Accepted	1134215

API NO. 003-22710
 OTC PROD.
 UNIT NO. N/A

PLEASE TYPE OR USE BLACK INK ONLY
 NOTE: Attach copy of original 1002A if recompletion or reentry.

OKLAHOMA CORPORATION COMMISSION
 Oil & Gas Conservation Division
 Post Office Box 52000
 Oklahoma City, Oklahoma 73152-2000
 Rule 165:10-3-25

Form 1002A
RECEIVED

MAY 26 2016

OKLAHOMA CORPORATION COMMISSION

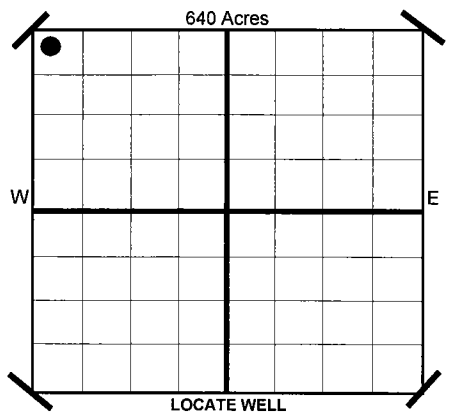
ORIGINAL
 AMENDED
 Reason Amended **Recompletion**

COMPLETION REPORT

TYPE OF DRILLING OPERATION
 STRAIGHT HOLE DIRECTIONAL HOLE HORIZONTAL HOLE
 SERVICE WELL

SPUD DATE	9/16/2013
DRLG FINISHED DATE	10/18/2013
DATE OF WELL COMPLETION	10/28/2013
1ST PROD DATE	N/A
RECOMP DATE	5/18/2016
Longitude (if Known)	

COUNTY	Alfalfa	SEC	36	TWP	27N	RGE	12W
LEASE NAME	Columbia 36-27-12 SWD			WELL NO	1		
SHL	NW 1/4	NW 1/4	NW 1/4	NW 1/4	FNL	FWL OF	
ELEVATION	Derrick Fl 1,279			Ground 1,257	260	1/4 SEC	260
OPERATOR NAME	CHESAPEAKE OPERATING, INC.			OTC/OCC OPERATOR NO.	17441		
ADDRESS	P.O. BOX 18496						
CITY	OKLAHOMA CITY	STATE	OK	ZIP	73154		



COMPLETION TYPE

SINGLE ZONE
 MULTIPLE ZONE
 Application Date
 COMMINGLED
 Application Date

LOCATION EXCEPTION ORDER NO. N/A
 INCREASED DENSITY ORDER NO. N/A

CASING & CEMENT (Form 1002C must be attached)

TYPE	SIZE	WEIGHT	GRADE	FEET	PSI	SAX	TOP
CONDUCTOR							
SURFACE	18-5/8"	87.5#	J-55	310		571	Surface
INTERMEDIATE	13-3/8"	54.5#	J-55	1,515		763	Surface
PRODUCTION	9-5/8"	40#	K-55	6,548		670	2,600
LINER							

PACKER @ 6.518	BRAND & TYPE PermaPak	PLUG @ 6.405	TYPE Cement	PLUG @ 7.525	TYPE Cement	TOTAL DEPTH	7,902
PACKER @ 6.040	BRAND & TYPE Weatherford	PLUG @ 6.410	TYPE CIBP	PLUG @ 7.611	TYPE Cement		

COMPLETION & TEST DATA BY PRODUCING FORMATION

2025MPS / 169ABCK / 153REGN

FORMATION	Simpson	Arbuckle	Reagan	
SPACING & SPACING ORDER NUMBER	N/A	N/A	N/A	No Frac
CLASS: Oil, Gas, Dry, Inj. Disp, Comm Disp, Svc	Disposal	Dry below plugs	Dry below plugs	
PERFORATED INTERVALS	6164 - 6314	open hole	open hole	
ACID/VOLUME	3000 gals 10% acid			
FRACTURE TREATMENT (Fluids/Prop Amounts)				

AS SUBMITTED

Minimum Gas Allowable (165:10-17-7) OR Gas Purchaser/Measurer
 Oil Allowable (165:10-13-3) OR 1st Sales Date

INITIAL TEST DATA

INITIAL TEST DATE					
OIL-BBL/DAY					
OIL-GRAVITY (API)					
GAS-MCF/DAY					
GAS-OIL RATIO CU FT/BBL					
WATER-BBL/DAY					
PUMPING OR FLOWING					
INITIAL SHUT-IN PRESSURE					
CHOKE SIZE					
FLOW TUBING PRESSURE					

A record of the formations drilled through, and pertinent remarks are presented on the reverse. I declare that I have knowledge of the contents of this report and am authorized by my organization to make this report, which was prepared by me or under my supervision and direction, with the data and facts stated herein to be true, correct, and complete to the best of my knowledge and belief.

Jeff Bull
 SIGNATURE: **JEFF BULL - REGULATORY MANAGER** DATE: **5/19/2016** PHONE NUMBER: **405-848-8000**
 ADDRESS: **P.O. BOX 18496 OKLAHOMA CITY OK 73154** EMAIL ADDRESS: **juanita.cooper@chk.com**

PLEASE TYPE OR USE BLACK INK ONLY
FORMATION RECORD

Give formation names and tops, if available, or descriptions and thickness of formations drilled through. Show intervals cored or drillstem tested.

LEASE NAME Columbia 36-27-12 SWD

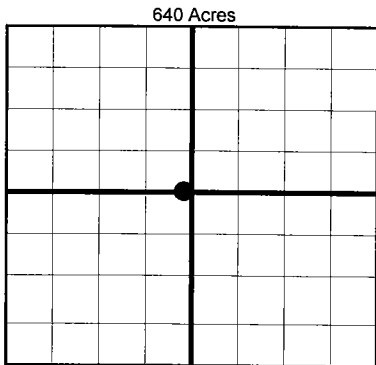
WELL NO. 1

NAMES OF FORMATIONS	TOP
Simpson	6,159
Arbuckle	6,487
Reagan	7,629

FOR COMMISSION USE ONLY	
ITD on file	<input type="checkbox"/> YES <input type="checkbox"/> NO
APPROVED	DISAPPROVED
2) Reject Codes	

Were open hole logs run?	<input checked="" type="checkbox"/> yes	<input type="checkbox"/> no
Date last log was run	10/16/2013	
Was CO ₂ encountered?	yes	<input checked="" type="checkbox"/> no at what depths?
Was H ₂ S encountered?	yes	<input checked="" type="checkbox"/> no at what depths?
Were unusual drilling circumstances encountered?	<input type="checkbox"/> yes	<input checked="" type="checkbox"/> no
If yes, briefly explain.		

Other remarks: UIC Application No. 1608890013 (modification of current UIC Permit No. 1401400021)



BOTTOM HOLE LOCATION FOR DIRECTIONAL HOLE

SEC	TWP	RGE	COUNTY				
Spot Location	1/4	1/4	1/4	1/4	Feet From 1/4 Sec Lines	FSL	FEL
Measured Total Depth	True Vertical Depth		BHL From Lease, Unit, or Property Line:				

BOTTOM HOLE LOCATION FOR HORIZONTAL HOLE: (LATERALS)

LATERAL #1							
SEC	TWP	RGE	COUNTY				
Spot Location	1/4	1/4	1/4	1/4	Feet From 1/4 Sec Lines	FSL	FWL
Depth of Deviation	Radius of Turn		Direction		Total Length		
Measured Total Depth	True Vertical Depth		BHL From Lease, Unit, or Property Line:				

LATERAL #2

LATERAL #2							
SEC	TWP	RGE	COUNTY				
Spot Location	1/4	1/4	1/4	1/4	Feet From 1/4 Sec Lines	FSL	FWL
Depth of Deviation	Radius of Turn		Direction		Total Length		
Measured Total Depth	True Vertical Depth		BHL From Lease, Unit, or Property Line:				

LATERAL #3

LATERAL #3							
SEC	TWP	RGE	COUNTY				
Spot Location	1/4	1/4	1/4	1/4	Feet From 1/4 Sec Lines	FSL	FWL
Depth of Deviation	Radius of Turn		Direction		Total Length		
Measured Total Depth	True Vertical Depth		BHL From Lease, Unit, or Property Line:				

If more than three drainholes are proposed, attach a separate sheet indicating the necessary information.

Direction must be stated in degrees azimuth. Please note, the horizontal drainhole and its end point must be located within the boundaries of the lease or spacing unit.

Directional surveys are required for all drainholes and directional wells.

