

Oklahoma Corporation Commission
Oil & Gas Conservation Division
Post Office Box 52000
Oklahoma City, Oklahoma 73152-2000
Rule 165: 10-3-25

Form 1002A

API No.: 35073252890000

Completion Report

Spud Date: June 08, 2016

OTC Prod. Unit No.: 073-217735

Drilling Finished Date: June 16, 2016

1st Prod Date: July 27, 2016

Completion Date: June 27, 2016

Drill Type: HORIZONTAL HOLE

Min Gas Allowable: Yes

Well Name: INGLE 32-18-6 1H

Purchaser/Measurer: CHESAPEAKE OPERATING LLC

Location: KINGFISHER 32 18N 6W
SW NW NE NW
363 FNL 1488 FWL of 1/4 SEC
Derrick Elevation: 1123 Ground Elevation: 1098

First Sales Date: 07/27/2016

Operator: CHESAPEAKE OPERATING LLC 17441
PO BOX 18496
6100 N WESTERN AVE
OKLAHOMA CITY, OK 73154-0496

Completion Type	
X	Single Zone
	Multiple Zone
	Commingled

Location Exception
Order No
655250

Increased Density
Order No
There are no Increased Density records to display.

Casing and Cement							
Type	Size	Weight	Grade	Feet	PSI	SAX	Top of CMT
SURFACE	9 5/8	36	J-55	1500		591	SURFACE
PRODUCTION	7	26	P-110EC	6734		251	4634

Liner								
Type	Size	Weight	Grade	Length	PSI	SAX	Top Depth	Bottom Depth
LINER	4 1/2	11.6	P-110EC	4307	0	0	6658	10965

Total Depth: 10967

Packer	
Depth	Brand & Type
There are no Packer records to display.	

Plug	
Depth	Plug Type
There are no Plug records to display.	

Initial Test Data										
Test Date	Formation	Oil BBL/Day	Oil-Gravity (API)	Gas MCF/Day	Gas-Oil Ratio Cu FT/BBL	Water BBL/Day	Pumpin or Flowing	Initial Shut-In Pressure	Choke Size	Flow Tubing Pressure
Aug 13, 2016	OSWEGO	683		403	590	1635	ARTIFICIA			240

Completion and Test Data by Producing Formation										
Formation Name: OSWEGO			Code: 404OSWG			Class: OIL				
Spacing Orders				Perforated Intervals						
Order No	Unit Size			From			To			
644968	640			There are no Perf. Intervals records to display.						
Acid Volumes				Fracture Treatments						
77,757 GALLONS HCL ACID				10,892 BARRELS FRAC FLUID, 96 POUNDS PROPPANT						

Formation	Top
OSWEGO	6655

Were open hole logs run? No

Date last log run:

Were unusual drilling circumstances encountered? No

Explanation:

Other Remarks
UNCEMENTED LINER; OPEN HOLE PACKER SYSTEM. OCC - THIS WELL IS AN OPEN HOLE COMPLETION FROM BOTTOM OF THE 7" CASING AT 6,734' TO TERMINUS AT 10,967'. THE 4 1/2" LINER IS NOT CEMENTED.

Lateral Holes
Sec: 32 TWP: 18N RGE: 6W County: KINGFISHER NW SW SE SW 643 FSL 1373 FWL of 1/4 SEC Depth of Deviation: 6220 Radius of Turn: 350 Direction: 181 Total Length: 4312 Measured Total Depth: 10967 True Vertical Depth: 6570 End Pt. Location From Release, Unit or Property Line: 643

FOR COMMISSION USE ONLY
Status: Accepted
1134226

API NO. 35-073-25289
 OTC PROD. UNIT NO. 073-217735

PLEASE TYPE OR USE BLACK INK ONLY
 NOTE: Attach copy of original 1002A if recompletion or reentry.

OKLAHOMA CORPORATION COMMISSION
 Oil & Gas Conservation Division
 Post Office Box 52000
 Oklahoma City, Oklahoma 73152-2000
 Rule 165:10-3-25

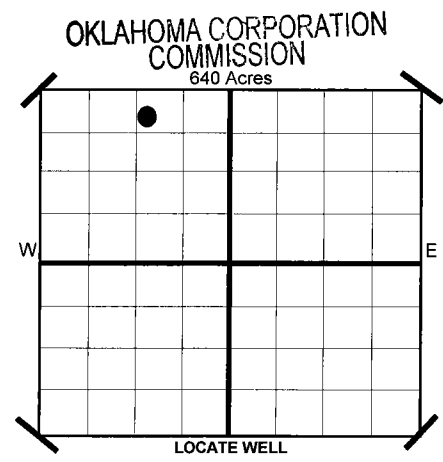
RECEIVED

AUG 23 2016

ORIGINAL
 AMENDED
 Reason Amended _____
 TYPE OF DRILLING OPERATION
 STRAIGHT HOLE DIRECTIONAL HOLE HORIZONTAL HOLE
 SERVICE WELL
 If directional or horizontal, see reverse for bottom hole location.

COMPLETION REPORT

SPUD DATE 6/8/2016
 DRLG FINISHED DATE 6/16/2016
 DATE OF WELL COMPLETION 6/27/2016
 1ST PROD DATE 7/27/2016
 RECOMP DATE _____
 Longitude (if Known) _____



COUNTY KINGFISHER SEC 32 TWP 18N RGE 6W
 LEASE NAME INGLE 32-18-6
 SHL SW 1/4 NW 1/4 NE 1/4 NW 1/4
 ELEVATION 1,123 Ground 1,098
 Derrick FI 1,123 Ground 1,098
 OPERATOR NAME CHESAPEAKE OPERATING, L.L.C.
 ADDRESS P.O. BOX 18496
 CITY OKLAHOMA CITY STATE OK ZIP 73154

COMPLETION TYPE
 SINGLE ZONE
 MULTIPLE ZONE
 COMMINGLED
 LOCATION EXCEPTION ORDER NO. 651308 (INTERIM)
 INCREASED DENSITY ORDER NO. N/A

CASING & CEMENT (Form 1002C must be attached)

TYPE	SIZE	WEIGHT	GRADE	FEET	PSI	SAX	TOP	
CONDUCTOR								
SURFACE	9 5/8"	36#	J-55	1,500		591	SURFACE	
INTERMEDIATE								
PRODUCTION	7"	26#	P-110EC	6,734		251	4,634	
UNCEMENTED LINER	4 1/2"	11.6#	P-110EC	6,658-10,965		0	*	
							TOTAL DEPTH	10,967

PACKER @ N/A BRAND & TYPE _____
 PLUG @ _____ TYPE _____ PLUG @ _____ TYPE _____

COMPLETION & TEST DATA BY PRODUCING FORMATION

40405WG

FORMATION	OSWEGO							
SPACING & SPACING ORDER NUMBER	640 644968							
CLASS: Oil, Gas, Dry, Inj. Disp, Comm Disp, Svc	OIL							Reported to Frac Focus
PERFORATED INTERVALS	OPEN HOLE PACKER SYSTEM							
ACID/VOLUME	HCL Acid 77,757 GALS							
FRACTURE TREATMENT (Fluids/Prop Amounts)	Frac Fluid 10,892 BBLS Proppant 96 LBS							

AS SUBMITTED

Minimum Gas Allowable (165:10-17-7) OR Gas Purchaser/Measurer Chesapeake Operating, L.L.C.
 Oil Allowable (165:10-13-3) 1st Sales Date 7/27/2016

INITIAL TEST DATA

INITIAL TEST DATE	8/13/2016			
OIL-BBL/DAY	683			
OIL-GRAVITY (API)				
GAS-MCF/DAY	403			
GAS-OIL RATIO CU FT/BBL	590			
WATER-BBL/DAY	1635			
PUMPING OR FLOWING	ARTIFICIAL LIFT			
INITIAL SHUT-IN PRESSURE				
CHOKE SIZE				
FLOW TUBING PRESSURE	240			

A record of the formations drilled through, and pertinent remarks are presented on the reverse. I declare that I have knowledge of the contents of this report and am authorized by my organization to make this report, which was prepared by me or under my supervision and direction, with the data and facts stated herein to be true, correct, and complete to the best of my knowledge and belief.

SIGNATURE: *JP Powell* NAME (PRINT OR TYPE): JP Powell, Sr. Regulatory Analyst DATE: 8/22/2016 PHONE NUMBER: 405-848-8000
 ADDRESS: P.O. BOX 18496 CITY: OKLAHOMA CITY STATE: OK ZIP: 73154 EMAIL ADDRESS: jp.powell@chk.com

PLEASE TYPE OR USE BLACK INK ONLY
FORMATION RECORD

Give formation names and tops, if available, or descriptions and thickness of formations drilled through. Show intervals cored or drillstem tested.

LEASE NAME INGLE 32-18-6

WELL NO. 1H

NAMES OF FORMATIONS	TOP
OSWEGO	6,655

FOR COMMISSION USE ONLY

ITD on file YES NO

APPROVED _____ DISAPPROVED _____

2) Reject Codes

Were open hole logs run? _____ yes no

Date last log was run N/A

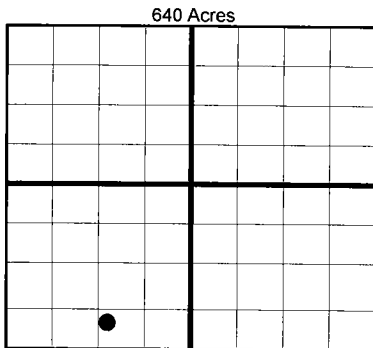
Was CO₂ encountered? _____ yes no at what depths?

Was H₂S encountered? _____ yes no at what depths?

Were unusual drilling circumstances encountered? _____ yes no
If yes, briefly explain.

Other remarks: *UNCEMENTED LINER; OPEN HOLE PACKER SYSTEM

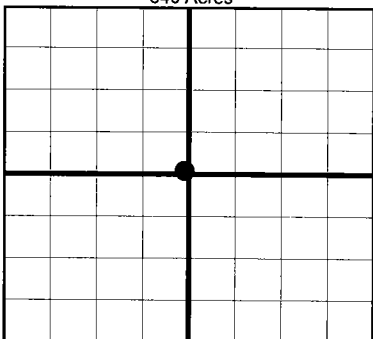
OCC- This well is an open hole completion from bottom of the 7" casing at 6734' to terminus at 10,967'. The 4 1/2" liner is not cemented



If more than three drainholes are proposed, attach a separate sheet indicating the necessary information.

Direction must be stated in degrees azimuth. Please note, the horizontal drainhole and its end point must be located within the boundaries of the lease or spacing unit.

Directional surveys are required for all drainholes and directional wells.



BOTTOM HOLE LOCATION FOR DIRECTIONAL HOLE

SEC	TWP	RGE	COUNTY			
Spot Location	1/4	1/4	1/4	Feet From 1/4 Sec Lines	FSL	FWL
Measured Total Depth	True Vertical Depth		BHL From Lease, Unit, or Property Line:			

BOTTOM HOLE LOCATION FOR HORIZONTAL HOLE: (LATERALS)

LATERAL #1

SEC	TWP	RGE	COUNTY						
32	18N	6W	KINGFISHER						
Spot Location	NW 1/4	SW 1/4	SE 1/4	SW 1/4	Feet From 1/4 Sec Lines	FSL	643	FWL	1,373
Depth of Deviation	6,220		Radius of Turn	350	Direction	181		Total Length	4,312
Measured Total Depth	10,967		True Vertical Depth		6,570		BHL From Lease, Unit, or Property Line: 643		

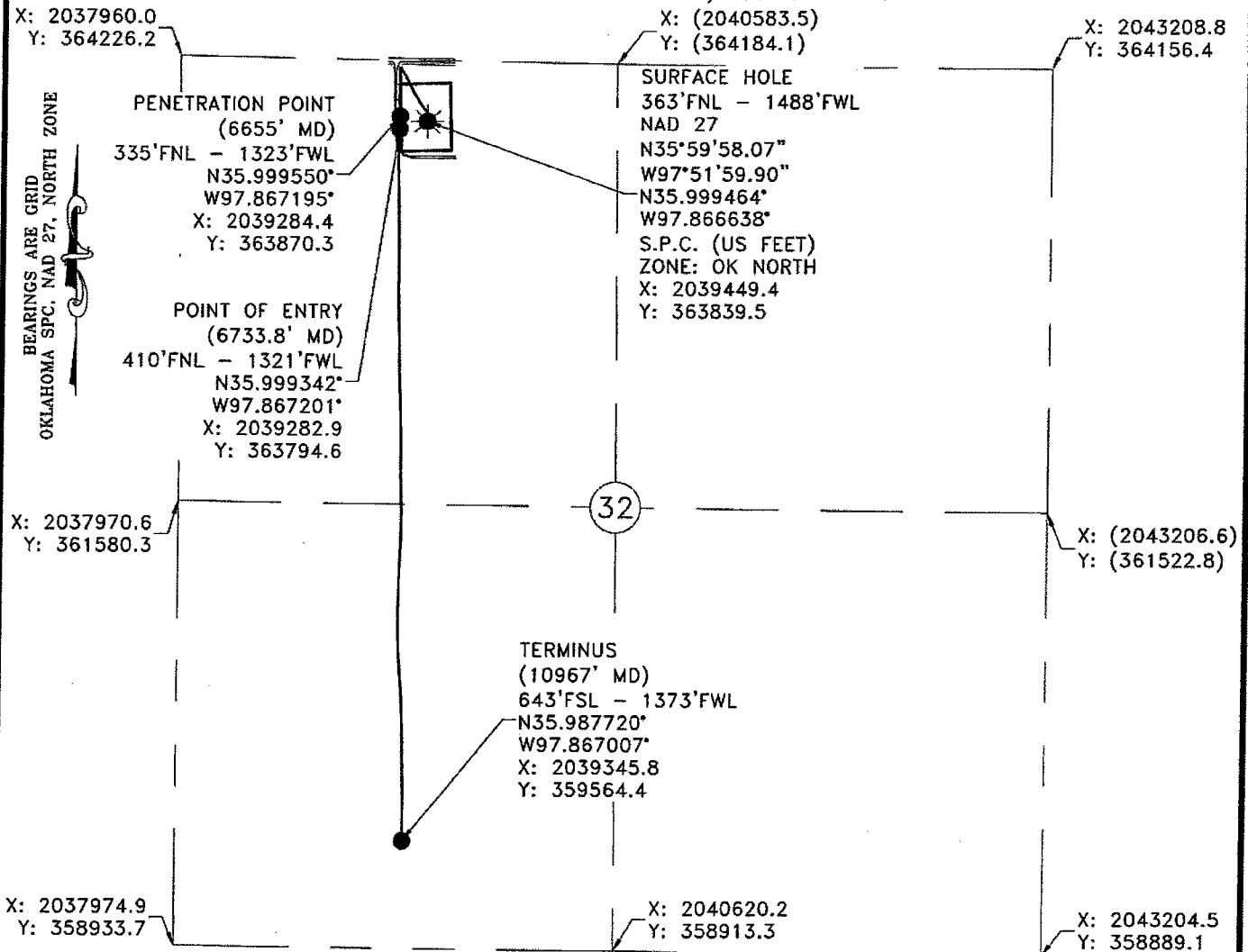
LATERAL #2

SEC	TWP	RGE	COUNTY				
Spot Location	1/4	1/4	1/4	Feet From 1/4 Sec Lines	FSL	FWL	
Depth of Deviation	Radius of Turn		Direction		Total Length		
Measured Total Depth	True Vertical Depth		BHL From Lease, Unit, or Property Line:				

LATERAL #3

SEC	TWP	RGE	COUNTY				
Spot Location	1/4	1/4	1/4	Feet From 1/4 Sec Lines	FSL	FWL	
Depth of Deviation	Radius of Turn		Direction		Total Length		
Measured Total Depth	True Vertical Depth		BHL From Lease, Unit, or Property Line:				

SECTION 32, T 18 N - R 06 W, I.M.,
KINGFISHER COUNTY, OKLAHOMA



Operator: CHESAPEAKE OPERATING, L.L.C. Date Staked: 4/1/2016
 Lease Name: INGLE 32-18-6 Well No.: 1H Elevation: 1098'
 Topography and Vegetation: PASTURE
 Good Drill Site? YES Reference or Alt. Location Stakes Set: NONE
 Best Accessibility to Location: FROM EXISTING LEASE ROAD
 Distance and Direction from Hwy, Jct. or town: FROM DOVER, HEAD NORTH ON US HWY. 81 1.4 MILES, THEN EAST ON CO. RD. E0700 2.2 MILES TO EXISTING LEASE ROAD, HEAD SOUTH .1 MILE AND TURN EAST INTO LOCATION.

FINAL AS-DRILLED PLAT

As-drilled information furnished by
Chesapeake Operating, Inc.

Chesapeake
Operating, Inc.



Gateway

Gateway Services Group, LLC

P.O. BOX 960
MEEKER, OK 74855
OFF. (405) 273-0954
FAX (405) 273-0580
C.A. NO. 4091 (LS)
EXP. DATE 6-30-2018

EXHIBIT "A" AS-DRILLED

INGLE 32-18-6 1H
363'FNL - 1488'FWL
NW/4 SECTION 32, T 18 N - R 06 W, I.M.,
KINGFISHER COUNTY, OKLAHOMA

LEGEND

- SURFACE LOCATION
- EXISTING WELL
- PROPOSED DRILL PATH
- EXISTING PIPELINE
- ELECTRIC LINE
- OVERHEAD POWER
- FENCE
- BOTTOM HOLE/LANDING POINT

DRAWN BY: RLG	DATE: 7/19/16	CHK'D: SWD
GATEWAY NO.: 16-0127-101R1	SCALE: 1"=1000'	
PAD PN#: 929005	WELL PN#: 656859	
REV. DWN.	DESCRIPTION	DATE
1	RLG LABEL CORRECTION	7/20/16