

Oklahoma Corporation Commission  
 Oil & Gas Conservation Division  
 Post Office Box 52000  
 Oklahoma City, Oklahoma 73152-2000  
 Rule 165: 10-3-25

Form 1002A

API No.: 35073251970001

**Completion Report**

Spud Date: October 23, 2015

OTC Prod. Unit No.: 073-217487

Drilling Finished Date: April 11, 2016

1st Prod Date: May 25, 2016

Completion Date: May 02, 2016

**Drill Type: HORIZONTAL HOLE**

Min Gas Allowable: Yes

Well Name: ALPHONS 1H-29X

Purchaser/Measurer: NEWFIELD

Location: KINGFISHER 21 15N 6W  
 SE SW SW SW  
 250 FSL 500 FWL of 1/4 SEC  
 Latitude: 35.75567 Longitude: -97.85008  
 Derrick Elevation: 1196 Ground Elevation: 1173

First Sales Date: 05/25/2016

Operator: NEWFIELD EXPLORATION MID-CON INC 20944

1 WILLIAMS CTR STE 1900  
 TULSA, OK 74172-0162

Completion Type	
X	Single Zone
	Multiple Zone
	Commingled

Location Exception	
Order No	
	641130
	654323

Increased Density	
Order No	
There are no Increased Density records to display.	

Casing and Cement							
Type	Size	Weight	Grade	Feet	PSI	SAX	Top of CMT
SURFACE	9 5/8	40	J-55	1523	800	405	SURFACE
PRODUCTION	5 1/2	20	P-110	18828	1000	2380	17995

Liner								
Type	Size	Weight	Grade	Length	PSI	SAX	Top Depth	Bottom Depth
There are no Liner records to display.								

**Total Depth: 18848**

Packer	
Depth	Brand & Type
There are no Packer records to display.	

Plug	
Depth	Plug Type
There are no Plug records to display.	

Initial Test Data										
Test Date	Formation	Oil BBL/Day	Oil-Gravity (API)	Gas MCF/Day	Gas-Oil Ratio Cu FT/BBL	Water BBL/Day	Pumpin or Flowing	Initial Shut-In Pressure	Choke Size	Flow Tubing Pressure
Jun 24, 2016	MISSISSIPPIAN (EXCHESTER)	1057	43	558	527	506	FLOWING	1000	64	98

Completion and Test Data by Producing Formation																
Formation Name: MISSISSIPPIAN (EXCHESTER)	Code: 359MSNLC	Class: OIL														
<table border="1"> <thead> <tr> <th colspan="2">Spacing Orders</th> </tr> <tr> <th>Order No</th> <th>Unit Size</th> </tr> </thead> <tbody> <tr> <td>640338</td> <td>640</td> </tr> <tr> <td>641129</td> <td>MULTIUNIT</td> </tr> </tbody> </table>		Spacing Orders		Order No	Unit Size	640338	640	641129	MULTIUNIT	<table border="1"> <thead> <tr> <th colspan="2">Perforated Intervals</th> </tr> <tr> <th>From</th> <th>To</th> </tr> </thead> <tbody> <tr> <td>8529</td> <td>18683</td> </tr> </tbody> </table>	Perforated Intervals		From	To	8529	18683
Spacing Orders																
Order No	Unit Size															
640338	640															
641129	MULTIUNIT															
Perforated Intervals																
From	To															
8529	18683															
<table border="1"> <thead> <tr> <th colspan="1">Acid Volumes</th> </tr> </thead> <tbody> <tr> <td>21,672 GALLONS 15% HCL</td> </tr> </tbody> </table>		Acid Volumes	21,672 GALLONS 15% HCL	<table border="1"> <thead> <tr> <th colspan="1">Fracture Treatments</th> </tr> </thead> <tbody> <tr> <td>17,723,200 # PROPPANT 67,814 BLWTR</td> </tr> </tbody> </table>	Fracture Treatments	17,723,200 # PROPPANT 67,814 BLWTR										
Acid Volumes																
21,672 GALLONS 15% HCL																
Fracture Treatments																
17,723,200 # PROPPANT 67,814 BLWTR																

Formation	Top
MISSISSIPPIAN	8036
CHESTER	7942
ATOKA	7847

Were open hole logs run? No  
Date last log run:

Were unusual drilling circumstances encountered? No  
Explanation:

Other Remarks
IRREGULAR SECTION.

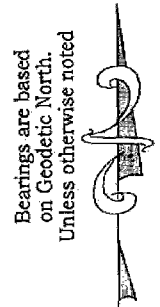
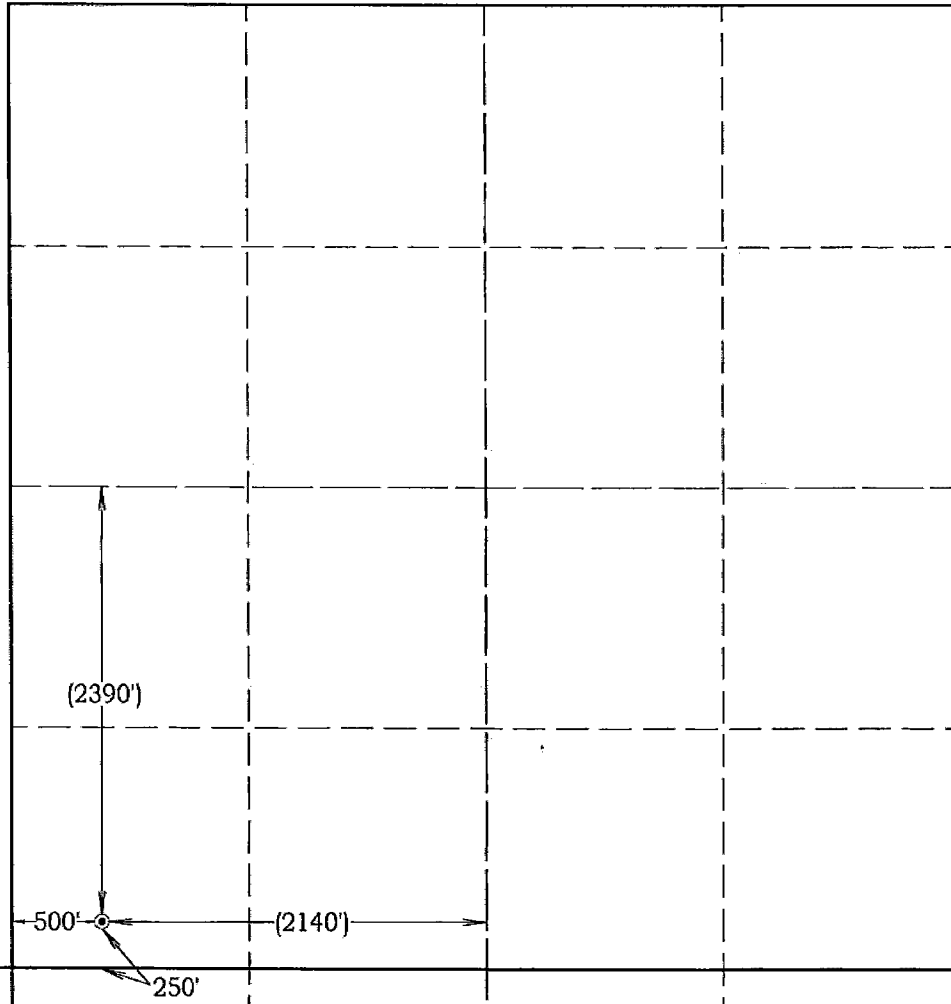
Lateral Holes
Sec: 32 TWP: 15N RGE: 6W County: KINGFISHER SW SW SW SE 59 FSL 2599 FEL of 1/4 SEC Depth of Deviation: 1787 Radius of Turn: 8874 Direction: 360 Total Length: 10154 Measured Total Depth: 18848 True Vertical Depth: 8023 End Pt. Location From Release, Unit or Property Line: 59

FOR COMMISSION USE ONLY
Status: Accepted
1134070

**Well Location Plat**  
**M & M Land Surveying, Inc.**  
 520 "E" Street NW. Ardmore, OK. 73401  
 Office 580-226-0446 Mobile 580-221-4999

Company Name: Newfield Exploration Mid-Continent, Inc. Lease Name: Alphons #1H-29X  
 Section 21 Township 15 North Range 6 West County Kingfisher Oklahoma  
 Surface Location 250' FSL - 500' FWL Elevation 1173' Good Location? Yes

Topography  
Location fell on existing  
pad 20' West of the  
Emma #1H-28x



Scale: 1" = 1000'  
 Invoice #16019  
 Date 1/20/16  
 Elevations of Proposed  
 Pad Corners  
 NW/C - N/A  
 NE/C - N/A  
 SE/C - N/A  
 SW/C - N/A

**Coordinates were derived from GPS RTK methods and are only accurate within ±10 feet**

**Location GPS NAD 27 Oklahoma North**  
 Surface Location  
 Latitude: 35.75563°  
 Longitude: 97.84975°  
 Y= 275,088'  
 X= 2,044,582'

**Location NAD 83**  
 Surface Location  
 Latitude: 35.75567°  
 Longitude: 97.85008°  
 Y= 275,112'  
 X= 2,012,984'

**Best Accessibility to Location**  
From the South

Distance & Direction From From Okarche Okla., go 7 miles East on County Line Road, then 2 miles North on County Road N2890 to the Southwest Corner of Section 21.  
 Highway or Town \_\_\_\_\_

**CERTIFICATE:**

I, D. Harry McClintick, a Registered Land Surveyor in the state of Oklahoma, do hereby certify that the above described Well Location was surveyed and staked on the ground as shown.

*D. Harry McClintick*

D. Harry McClintick, R.P.L.S. # 1367, CA # 3093

This location has been staked according to the best official survey records available to us, but its accuracy is not guaranteed. Please review this plat and notify us immediately of any discrepancy.

The distances shown in parenthesis ( ) are calculated distances based on the quarter section being 2640' and have not been measured.

