

Oklahoma Corporation Commission
Oil & Gas Conservation Division
Post Office Box 52000
Oklahoma City, Oklahoma 73152-2000
Rule 165: 10-3-25

Form 1002A

API No.: 35087220450000

Completion Report

Spud Date: April 04, 2016

OTC Prod. Unit No.: 087-217602

Drilling Finished Date: April 23, 2016

1st Prod Date: June 27, 2016

Completion Date: June 27, 2016

Drill Type: HORIZONTAL HOLE

Min Gas Allowable: Yes

Well Name: MCCORN 1H-18X

Purchaser/Measurer: NEWFIELD

Location: MCCLAIN 30 7N 4W
SW NE NE NE
350 FNL 335 FEL of 1/4 SEC
Latitude: 35.05777 Longitude: -97.65423
Derrick Elevation: 1322 Ground Elevation: 1298

First Sales Date: 06/27/2016

Operator: NEWFIELD EXPLORATION MID-CON INC 20944

1 WILLIAMS CTR STE 1900
TULSA, OK 74172-0162

| Completion Type | |
|-----------------|---------------|
| X | Single Zone |
| | Multiple Zone |
| | Commingled |

| Location Exception |
|--------------------|
| Order No |
| 653555 |

| Increased Density |
|--|
| Order No |
| There are no Increased Density records to display. |

| Casing and Cement | | | | | | | |
|-------------------|-------|--------|-------|-------|-----|------|------------|
| Type | Size | Weight | Grade | Feet | PSI | SAX | Top of CMT |
| CONDUCTOR | 20 | 94 | J-55 | 104 | | 27 | SURFACE |
| SURFACE | 9 5/8 | 40 | J-55 | 1513 | 500 | 410 | SURFACE |
| PRODUCTION | 5 1/2 | 20 | P-110 | 21529 | | 2835 | SURFACE |

| Liner | | | | | | | | |
|--|------|--------|-------|--------|-----|-----|-----------|--------------|
| Type | Size | Weight | Grade | Length | PSI | SAX | Top Depth | Bottom Depth |
| There are no Liner records to display. | | | | | | | | |

Total Depth: 21534

| Packer | |
|---|--------------|
| Depth | Brand & Type |
| There are no Packer records to display. | |

| Plug | |
|---------------------------------------|-----------|
| Depth | Plug Type |
| There are no Plug records to display. | |

| Initial Test Data | | | | | | | | | | |
|-------------------|-----------|-------------|-------------------|-------------|-------------------------|---------------|-------------------|--------------------------|------------|----------------------|
| Test Date | Formation | Oil BBL/Day | Oil-Gravity (API) | Gas MCF/Day | Gas-Oil Ratio Cu FT/BBL | Water BBL/Day | Pumpin or Flowing | Initial Shut-In Pressure | Choke Size | Flow Tubing Pressure |
| Jul 05, 2016 | WOODFORD | 508 | 47.6 | 1293 | 2545 | 1790 | FLOWING | 1800 | 24 | |

| Completion and Test Data by Producing Formation | | | | | | | | | | |
|---|------------------|--|---------------|-------------------------------------|--|------------|-----------|--|--|--|
| Formation Name: WOODFORD | | | Code: 319WDFD | | | Class: OIL | | | | |
| Spacing Orders | | | | Perforated Intervals | | | | | | |
| Order No | Unit Size | | | From | | | To | | | |
| 653553 | 640 | | | 11195 | | | 21388 | | | |
| 653554 | MULTIUNIT | | | | | | | | | |
| Acid Volumes | | | | Fracture Treatments | | | | | | |
| 25,320 GALS 15% HCL | | | | 11,236,580 # PROPPANT 566,022 BLWTR | | | | | | |

| Formation | Top |
|-----------|-------|
| CHESTER | 10549 |
| CANEY | 10707 |
| WOODFORD | 10797 |

Were open hole logs run? No

Date last log run:

Were unusual drilling circumstances encountered? No

Explanation:

| Other Remarks |
|--|
| OCC: FLE ORDER HAS NOT BEEN ISSUED. WE HAVE ACCEPTED OPERATORS DATA AS SUBMITTED. IRREGULAR SECTION. |

| Lateral Holes |
|---|
| Sec: 18 TWP: 7N RGE: 4W County: MCCLAIN |
| NW NE NE NE |
| 58 FNL 586 FEL of 1/4 SEC |
| Depth of Deviation: 10442 Radius of Turn: 734 Direction: 380 Total Length: 10434 |
| Measured Total Depth: 21534 True Vertical Depth: 10555 End Pt. Location From Release, Unit or Property Line: 58 |

| FOR COMMISSION USE ONLY |
|-------------------------|
| Status: Accepted |
| 1133844 |

Well Location Plat

M & M Land Surveying, Inc.

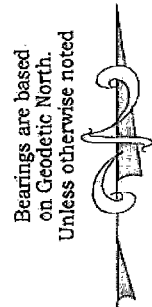
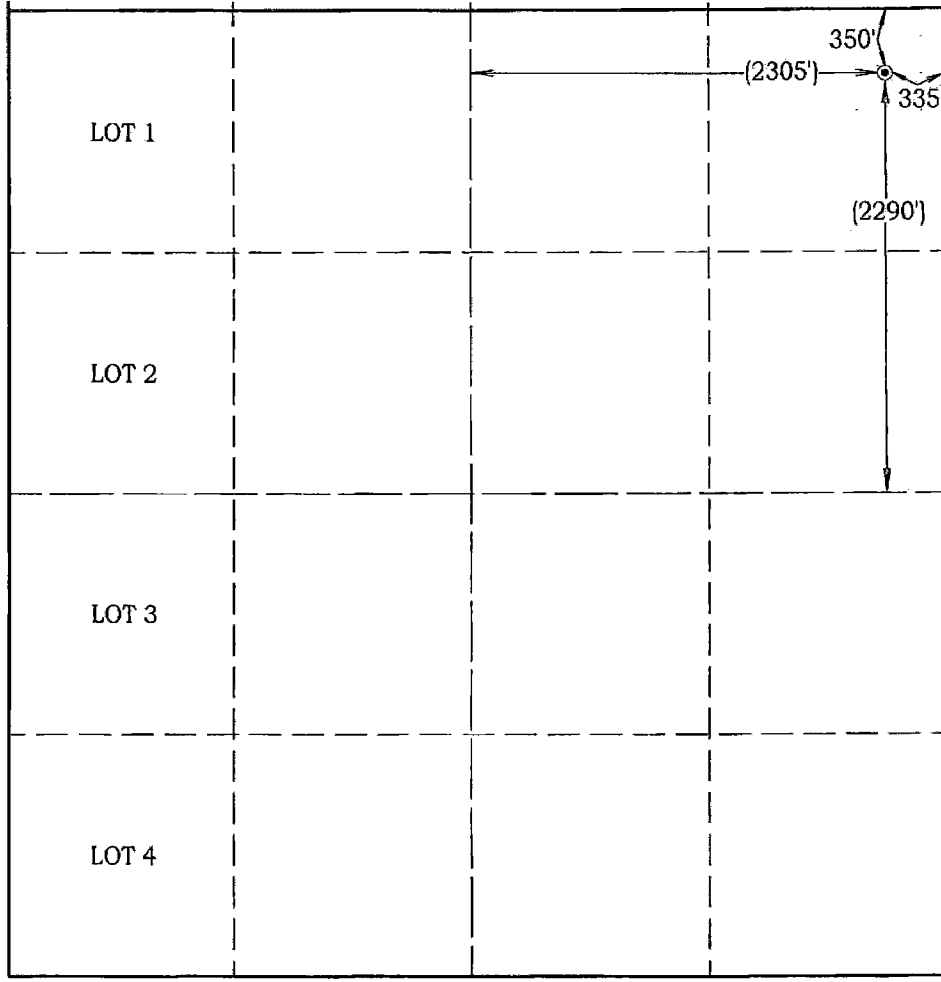
520 "E" Street NW. Ardmore, OK, 73401
Office 580-226-0446 Mobile 580-221-4999 Fax 580-226-7158

Company Name: Newfield Exploration Mid-Continent, Inc. Lease Name: McCorn #1H-18X
Section 30 Township 7 North Range 4 West County McClain Oklahoma

Surface Location 350' FNL - 335' FEL Elevation 1298' Good Location? Yes

Topography

Location fell in pasture
with scattered brush
40' East of the Allen
#1H-29x. There is a
pipeline in area.



Scale: 1" = 1000'
Invoice #16026
Date 1/26/16
Elevations of Proposed Pad Corners
NW/C - 1294'
NE/C - 1305'
SE/C - 1293'
SW/C - 1288'

Coordinates were derived from GPS RTK methods and are only accurate within ±10 feet

Location GPS NAD 27 Oklahoma South
Surface Location
Latitude: 35.05770°
Longitude: 97.65391°
Y= 627,705'
X = 2,103,580'

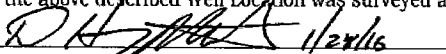
Location NAD 83
Surface Location
Latitude: 35.05777°
Longitude: 97.65423°
Y= 627,747'
X = 2,071,983'

Best Accessibility to Location
From the East

Distance & Direction From From the Jct. of SH. #39 & SH. #76, go 1.3 miles North on SH. #76 to the Northeast Corner of Section 30.
Highway or Town _____

CERTIFICATE:

I, D. Harry McClintick, a Registered Land Surveyor in the state of Oklahoma, do hereby certify that the above described Well Location was surveyed and staked on the ground as shown.


D. Harry McClintick, R.P.L.S. # 1367, CA # 3093

This location has been staked according to the best official survey records available to us, but its accuracy is not guaranteed. Please review this plat and notify us immediately of any discrepancy.

The distances shown in parenthesis () are calculated distances based on the quarter section being 2640' and have not been measured.

