

Oklahoma Corporation Commission
Oil & Gas Conservation Division
Post Office Box 52000
Oklahoma City, Oklahoma 73152-2000
Rule 165: 10-3-25

Form 1002A

API No.: 35059226360000

Completion Report

Spud Date: April 26, 2016

OTC Prod. Unit No.:

Drilling Finished Date: May 05, 2016

1st Prod Date: July 22, 2016

Completion Date: August 02, 2016

Drill Type: STRAIGHT HOLE

Well Name: JOBYNA 25-1

Purchaser/Measurer:

Location: HARPER 25 26N 20W
NW SW SW NW
580 FSL 280 FWL of 1/4 SEC
Latitude: 36.705305 Longitude: -99.31268277
Derrick Elevation: 1790 Ground Elevation: 1777

First Sales Date:

Operator: ORCA OPERATING COMPANY LLC 22354

427 S BOSTON AVE STE 400
TULSA, OK 74103-4114

Completion Type	
X	Single Zone
	Multiple Zone
	Commingle

Location Exception
Order No
There are no Location Exception records to display.

Increased Density
Order No
There are no Increased Density records to display.

Casing and Cement							
Type	Size	Weight	Grade	Feet	PSI	SAX	Top of CMT
CONDUCTOR	20			82		17	SURFACE
SURFACE	13 3/8	48	J-55	374		490	SURFACE
INTERMEDIATE	9 5/8	36	J-55	1010		400	SURFACE
PRODUCTION	7	26	J-55	6695		255	

Liner								
Type	Size	Weight	Grade	Length	PSI	SAX	Top Depth	Bottom Depth
There are no Liner records to display.								

Total Depth: 6700

Packer	
Depth	Brand & Type
There are no Packer records to display.	

Plug	
Depth	Plug Type
There are no Plug records to display.	

Initial Test Data										
Test Date	Formation	Oil BBL/Day	Oil-Gravity (API)	Gas MCF/Day	Gas-Oil Ratio Cu FT/BBL	Water BBL/Day	Pumpin or Flowing	Initial Shut-In Pressure	Choke Size	Flow Tubing Pressure
Jul 27, 2016	MORROW			69		1261	PUMPING		OPEN	

Completion and Test Data by Producing Formation			
Formation Name: MORROW		Code: 402MRRW	Class: GAS
Spacing Orders		Perforated Intervals	
Order No	Unit Size	From	To
639521	640	6371	6409
Acid Volumes		Fracture Treatments	
There are no Acid Volume records to display.		2,321 BARRELS, 150,000 POUNDS	

Formation	Top
HEEBNER	4814
TONKAWA	5216
OSWEGO	5896
RED FORK	6168
INOLA	6212
MORROW	6255
PENN UNCONFORMITY	6420

Were open hole logs run? Yes
Date last log run: May 05, 2016

Were unusual drilling circumstances encountered? Yes
Explanation: SHALLOW LOST CIRCULATION - CASED OFF

Other Remarks
OCC - THIS WELL WAS DRILLED ON AN IRREGULAR 640 UNIT E2 SEC 26 AND W2 SEC 25-26N-20W, SPACING ORDER NUMBER 639521.

FOR COMMISSION USE ONLY	
Status: Accepted	1134130

API NO. 059-22636
OTC PROD.
UNIT NO.

PLEASE TYPE OR USE BLACK INK ONLY
NOTE:

Attach copy of original 1002A
if recompletion or reentry.

OKLAHOMA CORPORATION COMMISSION
Oil & Gas Conservation Division
Post Office Box 52000
Oklahoma City, Oklahoma 73152-2000
Rule 165:10-3-25

RECEIVED

AUG 05 2016

Form 1002A
Rev. 2009

☒ ORIGINAL
☐ AMENDED (Reason)

COMPLETION REPORT

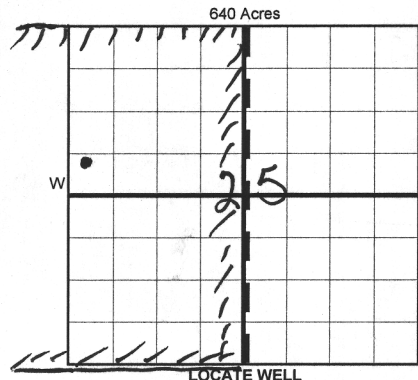
TYPE OF DRILLING OPERATION

☒ STRAIGHT HOLE ☐ DIRECTIONAL HOLE ☐ HORIZONTAL HOLE
☐ SERVICE WELL

If directional or horizontal, see reverse for bottom hole location.

COUNTY	HARPER	SEC	25	TWP	26N	RGE	20W
LEASE NAME	JOBYNA			WELL NO.	25-1		
NW 1/4 SW 1/4 SW 1/4 NW 1/4	FSL OF 1/4 SEC		580	FWL OF 1/4 SEC		280	
ELEVATION Derrick	1790	Ground	1777	Latitude (if known)		36.705305	
OPERATOR NAME				ORCA Operating Company LLC			
ADDRESS				427 S Boston Ste 400			
CITY		Tulsa		STATE		OK	
ZIP		74103-4114					

SPUD DATE 4-26-2016
DRLG FINISHED DATE 5-5-2016
DATE OF WELL COMPLETION 8-2-2016
1st PROD DATE 7-22-2016
RECOMP DATE



COMPLETION TYPE

<input checked="" type="checkbox"/> SINGLE ZONE
<input type="checkbox"/> MULTIPLE ZONE
<input type="checkbox"/> COMMINGLED
<input type="checkbox"/> EXCEPTION ORDER
<input type="checkbox"/> INCREASED DENSITY
<input type="checkbox"/> ORDER NO.

CASING & CEMENT (Form 1002C must be attached)

TYPE	SIZE	WEIGHT	GRADE	FEET	PSI	SAX	TOP OF CMT
CONDUCTOR	20"			82		17 yds	GROUT surface
SURFACE	13 3/8"	48	J55	374		490	CLASS C surface Pen
INTERMEDIATE	9 5/8"	36	J55	1,010		400	LITE-PREM surface) 1002C
PRODUCTION	7"	26	J55	6695		255	LITE-PREM
LINER							

PACKER @ _____ BRAND & TYPE _____ PLUG @ _____ TYPE _____ PLUG @ _____ TYPE _____
PACKER @ _____ BRAND & TYPE _____ PLUG @ _____ TYPE _____ PLUG @ _____ TYPE _____

TOTAL DEPTH 6,700

COMPLETION & TEST DATA BY PRODUCING FORMATION

FORMATION	MORROW								
SPACING & SPACING ORDER NUMBER	639521 (640)								
CLASS: Oil, Gas, Dry, Inj, Disp, Comm Disp, Svc	GAS								
PERFORATED INTERVALS	6371-6374								
	6392-6409								
ACID/VOLUME	NONE								
FRACTURE TREATMENT (Fluids/Prop Amounts)	2321 BBLS								
	150,000 LB.								

Monitor
Report to Frac Focus

Min Gas Allowable (165:10-17-7) Gas Purchaser/Measurer
OR First Sales Date
Oil Allowable (165:10-13-3)

INITIAL TEST DATA

INITIAL TEST DATE	7/27/2016								
OIL-BBL/DAY	0								
OIL-GRAVITY (API)	N/A								
GAS-MCF/DAY	69								
GAS-OIL RATIO CU FT/BBL	N/A								
WATER-BBL/DAY	1261								
PUMPING OR FLOWING	PUMPING								
INITIAL SHUT-IN PRESSURE	0								
CHOKE SIZE	OPEN								
FLOW TUBING PRESSURE	N/A								

AS SUBMITTED

A record of the formations drilled through, and pertinent remarks are presented on the reverse. I declare that I have knowledge of the contents of this report and am authorized by my organization to make this report, which was prepared by me or under my supervision and direction, with the data and facts stated herein to be true, correct, and complete to the best of my knowledge and belief.

SIGNATURE Jason Andrews 918-587-3104
427 S. Boston Ave. STE 400 Tulsa OK 74103 jandrews@orcaoperating.com
ADDRESS CITY STATE ZIP EMAIL ADDRESS

PLEASE TYPE OR USE BLACK INK ONLY

FORMATION RECORD

Give formation names and tops, if available, or descriptions and thickness of formations drilled through. Show intervals cored or drillstem tested.

NAMES OF FORMATIONS	TOP
HEEBNER	4,814
TONKAWA	5,216
OSWEGO	5,896
RED FORK	6,168
INOLA	6,212
MORROW	6,255
PENN UNCONFORMITY	6,420

LEASE NAME JOBYNA WELL NO. 25-1

FOR COMMISSION USE ONLY	
ITD on file <input type="checkbox"/> YES <input type="checkbox"/> NO	
APPROVED _____	DISAPPROVED _____
2) Reject Codes	

Were open hole logs run?	<u>X</u> yes <input type="checkbox"/> no
Date Last log was run	<u>5/5/2016</u>
Was CO ₂ encountered?	<u>X</u> yes <input type="checkbox"/> no at what depths? _____
Was H ₂ S encountered?	<u>X</u> yes <input type="checkbox"/> no at what depths? _____
Were unusual drilling circumstances encountered?	<u>X</u> yes <input type="checkbox"/> no
If yes, briefly explain below	
Shallow lost circulation - Cased off	

Other remarks: OCC- This well was drilled on an irregular 640 unit
E1/2 Sec 26 & W1/2 Sec 25-26 N-20W spacing order 639521

640 Acres

If more than three drainholes are proposed, attach a separate sheet indicating the necessary information.

Direction must be stated in degrees azimuth.
Please note, the horizontal drainhole and its end point must be located within the boundaries of the lease or spacing unit.

Directional surveys are required for all drainholes and directional wells.

640 Acres

BOTTOM HOLE LOCATION FOR DIRECTIONAL HOLE

SEC	TWP	RGE	COUNTY
Spot Location			
1/4	1/4	1/4	1/4
Measured Total Depth		True Vertical Depth	Feet From 1/4 Sec Lines FSL FWL
BHL From Lease, Unit, or Property Line:			

BOTTOM HOLE LOCATION FOR HORIZONTAL HOLE: (LATERALS)

LATERAL #1

SEC	TWP	RGE	COUNTY
Spot Location			
1/4	1/4	1/4	1/4
Depth of Deviation		Radius of Turn	Direction
Measured Total Depth		True Vertical Depth	Total Length
BHL From Lease, Unit, or Property Line:			

LATERAL #2

SEC	TWP	RGE	COUNTY
Spot Location			
1/4	1/4	1/4	1/4
Depth of Deviation		Radius of Turn	Direction
Measured Total Depth		True Vertical Depth	Total Length
BHL From Lease, Unit, or Property Line:			

LATERAL #3

SEC	TWP	RGE	COUNTY
Spot Location			
1/4	1/4	1/4	1/4
Depth of Deviation		Radius of Turn	Direction
Measured Total Depth		True Vertical Depth	Total Length
BHL From Lease, Unit, or Property Line:			

API NO. 059-22636

OTC PROD. UNIT NO. 059-21787

PLEASE TYPE OR USE BLACK INK ONLY
NOTE:Attach copy of original 1002A
if recompletion or reentry.☒ ORIGINAL
☐ AMENDED (Reason)

A: 217867 I

OKLAHOMA CORPORATION COMMISSION
Oil & Gas Conservation Division
Post Office Box 52000
Oklahoma City, Oklahoma 73152-2000
Rule 165:10-3-25

RECEIVED

AUG 05 2016

OKLAHOMA CORPORATION
COMMISSION

1016E2

Form 1002A
Rev. 2009

COMPLETION REPORT

TYPE OF DRILLING OPERATION

☒ STRAIGHT HOLE ☐ DIRECTIONAL HOLE ☐ HORIZONTAL HOLE
☐ SERVICE WELL

If directional or horizontal, see reverse for bottom hole location.

COUNTY HARPER SEC 25 TWP 26N RGE 20W

LEASE NAME JOBYNA

NW 1/4 SW 1/4 SW 1/4 NW 1/4 FSL OF 1/4 SEC 580 FWL OF 1/4 SEC 280

ELEVATION 1790 Ground 1777 Latitude (if known) 36.705305

OPERATOR NAME ORCA Operating Company LLC

ADDRESS 427 S Boston Ste 400

CITY Tulsa

STATE OK

ZIP 74103-4114

SPUD DATE 4-26-2016

DRLG FINISHED DATE 5-5-2016

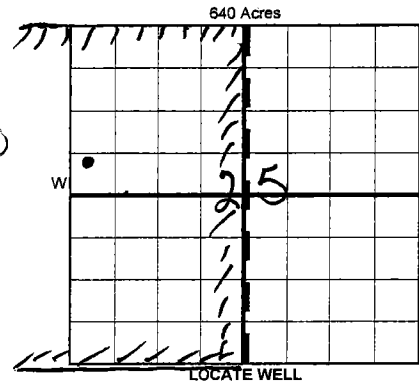
DATE OF WELL COMPLETION 8-2-2016

1st PROD DATE 7-22-2016

RECOMP DATE

Longitude (if known) -99.31268277

OTC/OCC OPERATOR NO. 22354



COMPLETION TYPE

☒ SINGLE ZONE
☐ MULTIPLE ZONE
Application Date
COMINGLED
Application Date
LOCATION
EXCEPTION ORDER
INCREASED DENSITY
ORDER NO.

CASING & CEMENT (Form 1002C must be attached)

TYPE	SIZE	WEIGHT	GRADE	FEET	PSI	SAX	TOP OF CMT
CONDUCTOR	20"			82		17 yds	GROUT surface
SURFACE	13 3/8"	48	J55	374		490	CLASS C surface Pen
INTERMEDIATE	9 5/8"	36	J55	1,010		400	LITE-PREM surface) 1002
PRODUCTION	7"	26	J55	6695		255	LITE PREM
LINER							
						TOTAL DEPTH	6,700

PACKER @ BRAND & TYPE

PLUG @

TYPE

PLUG @

TYPE

TOTAL DEPTH

PACKER @ BRAND & TYPE

PLUG @

TYPE

PLUG @

TYPE

COMPLETION & TEST DATA BY PRODUCING FORMATION

FORMATION	MORROW						
SPACING & SPACING ORDER NUMBER	639521 (640)						Monitor
CLASS: Oil, Gas, Dry, Inj, Disp, Comm Disp, Svc	GAS						Report to Frac Focus
PERFORATED INTERVALS	6371-6374						
	6392-6409						
ACID/VOLUME	NONE						
FRACTURE TREATMENT (Fluids/Prop Amounts)	2321 BBLS						
	150,000 LB.						

Min Gas Allowable (165:10-17-7)

Gas Purchaser/Measurer

WEBB ENERGY 18302-0

OR

First Sales Date

INITIAL TEST DATA

INITIAL TEST DATE	7/27/2016						
OIL-BBL/DAY	0						
OIL-GRAVITY (API)	N/A						
GAS-MCF/DAY	69						
GAS-OIL RATIO CU FT/BBLS	N/A						
WATER-BBL/DAY	1261						
PUMPING OR FLOWING	PUMPING						
INITIAL SHUT-IN PRESSURE	0						
CHOKE SIZE	OPEN						
FLOW TUBING PRESSURE	N/A						

AS SUBMITTED

SCANNED

A record of the formations drilled through, and pertinent remarks are presented on the reverse. I declare that I have knowledge of the contents of this report and am authorized by my organization to make this report, which was prepared by me or under my supervision and direction, with the data and facts stated herein to be true, correct, and complete to the best of my knowledge and belief.

Jason Andrews

918-587-3104

SIGNATURE

NAME (PRINT OR TYPE)

DATE

PHONE NUMBER

427 S. Boston Ave. STE 400

Tulsa

OK

74103

jandrews@orcaoperating.com

ADDRESS

CITY

STATE

ZIP

EMAIL ADDRESS

E2

DR