

Oklahoma Corporation Commission
Oil & Gas Conservation Division
Post Office Box 52000
Oklahoma City, Oklahoma 73152-2000
Rule 165: 10-3-25

Form 1002A

API No.: 35043230870001

Completion Report

Spud Date: June 14, 2009

OTC Prod. Unit No.: 043-203161

Drilling Finished Date: July 24, 2009

1st Prod Date: September 06, 2009

Amended

Completion Date: August 13, 2009

Amend Reason: DEEPEN - DRILL REPLACEMENT LATERAL

Recomplete Date: July 16, 2016

Drill Type: HORIZONTAL HOLE

Min Gas Allowable: Yes

Well Name: MARION (MARION 1-29H) 1-29HL2

Purchaser/Measurer: ENABLE ENERGY

Location: DEWEY 32 19N 18W
NW NW NW NE
2390 FSL 200 FWL of 1/4 SEC
Derrick Elevation: 2040 Ground Elevation: 2026

First Sales Date: 07/06/2016

Operator: D & J OIL COMPANY INC 17713

4720 W OWEN K GARRIOTT RD
ENID, OK 73703-4637

Completion Type	
X	Single Zone
	Multiple Zone
	Commingled

Location Exception	
Order No	
648409	

Increased Density	
Order No	
There are no Increased Density records to display.	

Casing and Cement							
Type	Size	Weight	Grade	Feet	PSI	SAX	Top of CMT
CONDUCTOR	30	94		40		32	SURFACE
SURFACE	13 3/8	48	H-40	366	175	295	SURFACE
INTERMEDIATE	9 5/8	40 & 36	J-55 & K-55	4112	700	325	SURFACE
PRODUCTION	7	26	P-110 & N-80	8145	215	215	5575

Liner								
Type	Size	Weight	Grade	Length	PSI	SAX	Top Depth	Bottom Depth
LINER	4 1/2	11.60	P-110	3340	0	0	7952	11292

Total Depth: 11995

Packer	
Depth	Brand & Type
7952	SCHLUMBERGER

Plug	
Depth	Plug Type
There are no Plug records to display.	

Initial Test Data										
Test Date	Formation	Oil BBL/Day	Oil-Gravity (API)	Gas MCF/Day	Gas-Oil Ratio Cu FT/BBL	Water BBL/Day	Pumpin or Flowing	Initial Shut-In Pressure	Choke Size	Flow Tubing Pressure
Jul 15, 2016	COTTAGE GROVE	50	46	33	660	175	PUMPING	970	2	

Completion and Test Data by Producing Formation										
Formation Name: COTTAGE GROVE			Code: 405CGGV			Class: OIL				
Spacing Orders				Perforated Intervals						
Order No		Unit Size		From			To			
82286		640		There are no Perf. Intervals records to display.						
Acid Volumes				Fracture Treatments						
8,046 GALLONS 15% ACID				42,110 BARRELS SW AND GW, 158,014 POUNDS 30/50, 534,734 POUNDS 20/40, 818,896 POUNDS 16/30, 6,805,000 SCF N2						

Formation	Top
COTTAGE GROVE SAND	7758

Were open hole logs run? No

Date last log run:

Were unusual drilling circumstances encountered? No

Explanation:

Other Remarks
ORIGINAL 7" CASING HAD CIBP SET AT 7,310', CUTOFF AT 6,000' AND REMOVED. SET 230 SACKS CEMENT PLUG AT 6,043'. DRESSED PLUG TO 5,633'. KICKED OFF AT 5,633' TO DRILL REPLACEMENT LATERAL. SET NEW 7" STRING AT 8,145' MD THROUGH BUILD SECTION WITH ESTIMATED TOP OF CEMENT CALCULATED AT 5,575' ALONG WITH AN OPEN HOLE PACKER SYSTEM ON 4 1/2" LINER. LINER HANGER TOP AT 7,952' AND END OF LINER SYSTEM AT 11,292' MD. OPEN HOLE COMPLETION FROM 8,145' MD TO 11,995' MD. CONDUCTOR, SURFACE, AND INTERMEDIATE CASING SAME AS ORIGINAL HOLE. OCC - THIS DOCUMENT IS ACCEPTED BASED ON THE DATA SUBMITTED THE FINAL LOCATION EXCEPTION HAS NOT BEEN ACCEPTED.

Lateral Holes

Sec: 29 TWP: 19N RGE: 18W County: DEWEY

NW SW NW NE

1659 FSL 31 FWL of 1/4 SEC

Depth of Deviation: 7123 Radius of Turn: 663 Direction: 357 Total Length: 3850

Measured Total Depth: 11995 True Vertical Depth: 7762 End Pt. Location From Release, Unit or Property Line: 981

Sec: 29 TWP: 19N RGE: 18W County: DEWEY

SW SE SE NE

106 FSL 346 FEL of 1/4 SEC

Depth of Deviation: 6757 Radius of Turn: 1033 Direction: 25 Total Length: 2990

Measured Total Depth: 11084 True Vertical Depth: 7754 End Pt. Location From Release, Unit or Property Line: 346

FOR COMMISSION USE ONLY

1134108

Status: Accepted

API NO. 043-23087
 OTC PROD. UNIT NO. 043-203161

PLEASE TYPE OR USE BLACK INK ONLY
 NOTE: Attach copy of original 1002A if recompletion or reentry.

OKLAHOMA CORPORATION COMMISSION
 Oil & Gas Conservation Division
 Post Office Box 52000
 Oklahoma City, Oklahoma 73152-2000
 Rule 165:10-3-25

RECEIVED Form 1002A Rev. 2007

AUG 03 2016

OKLAHOMA CORPORATION COMMISSION
 640 Acres

ORIGINAL
 X AMENDED
 Reason Amended

Deepen-Drill Replacement Lateral

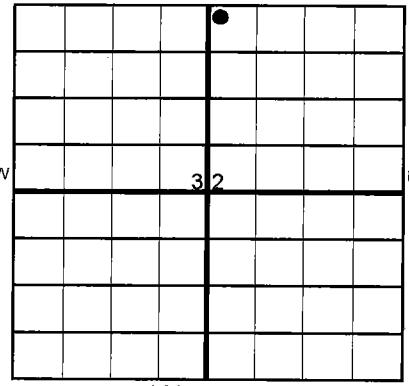
COMPLETION REPORT

TYPE OF DRILLING OPERATION
 STRAIGHT HOLE _____ DIRECTIONAL HOLE _____ HORIZONTAL HOLE
 SERVICE WELL _____

If directional or horizontal, see reverse for bottom hole location.

COUNTY	DEWEY	SEC	32	TWP	19N	RGE	18W
LEASE NAME	MARION		WELL NO.	1-29HL2			
SHL	INVV 1/4	INVV 1/4	INVV 1/4	NE 1/4	FSL	FWL OF 1/4 SEC	200
ELEVATION	Derrick Ft	2040	Ground	2026	Latitude if Known	Longitude if Known	
OPERATOR NAME	D&J OIL CO., INC.			OTC/OCC OPERATOR NO.	17713-0		
ADDRESS	4720 W. OWEN K. GARRIOTT						
CITY	ENID	STATE	OK	ZIP	73703		

SPUD DATE	6-14-2009	12/15/2015
DRLG FINISHED	7-24-2009	1/23/2016
WELL COMPLETION	8-18-2009	3/9/2016
1ST PROD DATE	9-6-2009	7/16/2016
RECOMP DATE	7-16-2016	



COMPLETION TYPE

<input checked="" type="checkbox"/>	SINGLE ZONE
<input type="checkbox"/>	MULTIPLE ZONE
<input type="checkbox"/>	COMMINGLED

LOCATION EXCEPTION ORDER NO.
 CD# 201505329 *648409 I.O.*

INCREASED DENSITY ORDER NO.

CASING & CEMENT (Form 1002C must be attached)

TYPE	SIZE	WEIGHT	GRADE	FEET	PSI	SAX	TOP OF CMT
Conductor	30"	94#		40'	NA	32	SURFACE
Surface	13 3/8"	48#	H-40	366'	175#	295	SURFACE
Intermediate	9 5/8"	40&36#	J&K-55	4112'	700#	325	SURFACE
Production	7"	26#	P110&N80	8145'	215#	215	5575'
Liner	4 1/2"	11.60#	P110	7952-11292 3340'	NA	NA	NA
							TOTAL DEPTH 11,995'

PACKER @ 7952' BRAND & TYPE SCHLUMB PLUG @ TYPE PLUG @ TYPE TOTAL DEPTH 11,995'
 PACKER @ BRAND & TYPE PLUG @ TYPE PLUG @ TYPE *see remarks*

COMPLETION & TEST DATA BY PRODUCING FORMATION

FORMATION	COTTAGE GROVE <i>4050 GGV</i>		
SPACING & SPACING ORDER NUMBER	82286	(640)	<i>Monitor Report to Frac Falls</i>
CLASS: Oil, Gas, Dry, Inj., Disp, Comm Disp, Svc	OIL		
PERFORATED INTERVALS	<i>openhole</i> OH 8145' - 11,995'		
ACID/VOLUME Fracture Treatment (Fluids/Prop Amounts)	8046 GAL 15% ACID	42110 BBLs SW & GW	
	158,014# 30/50	534,734# 20/40	818,896# 16/30
	6,800,000 SCF N2		

Request minimum gas allowable (165:10-17-7) Gas Purchaser/Measurer ENABLE ENERGY 1st Sales Date 07-06-2016

INITIAL TEST DATA

INITIAL TEST DATE	7/15/2016
OIL-BBL/DAY	50
OIL-GRAVITY (API)	46
GAS-MCF/DAY	33
GAS-OIL RATIO CU FT/BBL	660:1
WATER-BBL/DAY	175
PUMPING OR FLOWING	PMPG
INITIAL SHUT-IN PRESSURE	970
CHOKE SIZE	2"
FLOW TUBING PRESSURE	NA

AS SUBMITTED

A record of the formations drilled through, and pertinent remarks are presented on the reverse. I declare that I have knowledge of the contents of this report and am authorized by my organization to make this report, which was prepared by me under my supervision and direction, with the data and facts stated herein to be true, correct, and complete to the best of my knowledge and belief.

SIGNATURE *Craig Roberts* NAME (PRINT OR TYPE) CRAIG ROBERTS DATE 7/22/2016 PHONE NUMBER 580-242-3636
 ADDRESS 4720 W. OWEN K. GARRIOTT CITY ENID STATE OK ZIP 73703 EMAIL ADDRESS craig@djoil.com

PLEASE TYPE OR USE BLACK INK ONLY
FORMATION RECORD

Give formation names and tops, if available, or descriptions and thickness of formations drilled through. Show intervals cored or drillstem tested.

LEASE NAME MARION

WELL NO. 1-29HL2

NAMES OF FORMATIONS	TOP
COTTAGE GROVE SD 8001'MD	7758'TVD

FOR COMMISSION USE ONLY

ITD on file YES NO

APPROVED _____ DISAPPROVED _____

2) Reject Codes

Were open hole logs run? yes no

Date Last log was run _____

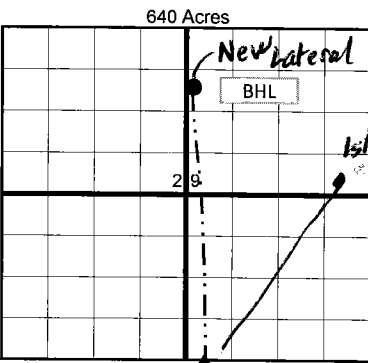
Was CO₂ encountered? yes no at what depths? _____

Was H₂S encountered? yes no at what depths? _____

Were unusual drilling circumstances encountered? _____ yes no

If yes, briefly explain. _____

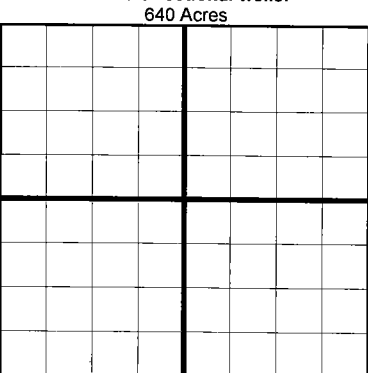
Other remarks: Original 7" Csg had CIBP set at 7310', cutoff at 6000' and removed. Set 230 sx cement plug at 6043'. Dressed plug to 5633'. Kicked off at 5633' to drill replacement lateral. Set new 7" string at 8145'MD through build section w/ estimated Top of Cement calculated at 5575' along with an Open Hole Packer System on 4 1/2" Liner. Liner Hanger top at 7952' and end of liner system at 11,292' MD. OH completion f/ 8145'MD to 11,995'MD. Conductor, Surface, and Intermediate casing same as original hole.



If more than three drainholes are proposed, attach a separate sheet indicating the necessary information.

Direction must be stated in degrees azimuth. Please note, the horizontal drainhole and its end point must be located within the boundaries of the lease or spacing unit.

Directional surveys are required for all drainholes and directional wells.



BOTTOM HOLE LOCATION FOR DIRECTIONAL HOLE

SEC	TWP	RGE	COUNTY
Spot Location	Feet From 1/4 Sec Lines		
1/4 1/4 1/4 1/4	FSL	FWL	
Measured Total Depth	True Vertical Depth	BHL From Lease, Unit, or Property Line:	

BOTTOM HOLE LOCATION FOR HORIZONTAL HOLE: (LATERALS)

LATERAL ~~X~~ 2

SEC	TWP	RGE	COUNTY
29	19N	18W	DEWEY
Spot Location	Feet From 1/4 Sec Lines		
SW 1/4 NW 1/4 NE 1/4	1659	FSL	31
Depth of Deviation	Radius of Turn	Direction	Total Length
7123	663'	357	3850
Measured Total Depth	True Vertical Depth	End Pt Location From Lease, Unit or Property Line:	
11,995'	7762	981	

LATERAL ~~X~~ 1

per original 1002A

SEC	TWP	RGE	COUNTY
29	19N	18W	Dewey
Spot Location	Feet From 1/4 Sec Lines		
SW 1/4 SE 1/4 SE 1/4 NE 1/4	106	FSL	346 FEL
Depth of Deviation	Radius of Turn	Direction	Total Length
6757	1033	25	2990
Measured Total Depth	True Vertical Depth	End Pt Location From Lease, Unit or Property Line:	
11084	7754	346	

LATERAL #3

SEC	TWP	RGE	COUNTY
Spot Location	Feet From 1/4 Sec Lines		
1/4 1/4 1/4 1/4	FSL	FWL	
Depth of Deviation	Radius of Turn	Direction	Total Length
Measured Total Depth	True Vertical Depth	End Pt Location From Lease, Unit or Property Line:	