

Oklahoma Corporation Commission
Oil & Gas Conservation Division
Post Office Box 52000
Oklahoma City, Oklahoma 73152-2000
Rule 165: 10-3-25

Form 1002A

API No.: 35121247770000

Completion Report

Spud Date: January 26, 2016

OTC Prod. Unit No.: 12121764600000

Drilling Finished Date: February 26, 2016

1st Prod Date: July 13, 2016

Completion Date: July 13, 2016

Drill Type: HORIZONTAL HOLE

Min Gas Allowable: Yes

Well Name: HUNT-GARRETT 4-34/3H

Purchaser/Measurer: MARKWEST

Location: PITTSBURG 34 6N 13E
SE NW NE NW
539 FNL 1740 FWL of 1/4 SEC
Latitude: -95.924311 Longitude: 34.954975
Derrick Elevation: 758 Ground Elevation: 732

First Sales Date: 07/13/2016

Operator: BP AMERICA PRODUCTION COMPANY 1640

737 N ELDRIDGE PKWY
HOUSTON, TX 77079-4411

Completion Type	
X	Single Zone
	Multiple Zone
	Commingled

Location Exception
Order No
642681

Increased Density
Order No
642597
642641

Casing and Cement							
Type	Size	Weight	Grade	Feet	PSI	SAX	Top of CMT
SURFACE	13 3/8	54.5	J-55 LTC	370		355	SURFACE
INTERMEDIATE	9 5/8	40	J-55 LTC	6026		990	513
PRODUCTION	5 1/2	20	P-110 LTC	16170		2405	3843

Liner								
Type	Size	Weight	Grade	Length	PSI	SAX	Top Depth	Bottom Depth
There are no Liner records to display.								

Total Depth: 16170

Packer	
Depth	Brand & Type
There are no Packer records to display.	

Plug	
Depth	Plug Type
There are no Plug records to display.	

Initial Test Data										
Test Date	Formation	Oil BBL/Day	Oil-Gravity (API)	Gas MCF/Day	Gas-Oil Ratio Cu FT/BBL	Water BBL/Day	Pumpin or Flowing	Initial Shut-In Pressure	Choke Size	Flow Tubing Pressure
Jul 13, 2016	WOODFORD			4701			FLOWING		20/128	

Completion and Test Data by Producing Formation										
Formation Name: WOODFORD			Code: 319WDFD			Class: GAS				
Spacing Orders				Perforated Intervals						
Order No	Unit Size			From			To			
569273	640			8817			15895			
577931	640									
642890	MULTIUNIT									
Acid Volumes				Fracture Treatments						
There are no Acid Volume records to display.				26-STAGE FRAC W/301,035 GAL CLEAN VOLUME AND 2,575,190# OTTAWA 40/70						

Formation	Top
------------------	------------

Were open hole logs run? No
Date last log run:

Were unusual drilling circumstances encountered? No
Explanation:

Other Remarks
SHUT IN PRESSURE NOT AVAILABLE. WELL WENT FROM FLOWBACK TANK TO SALES. 2 7/8" 6.5# J-55 TUBING @ 8580'. OCC -THIS DOCUMENT IS ACCEPTED BASED ON THE DATA SUBMITTED. THE FINAL LOCATION EXCEPTION ORDER HAS NOT BEEN ISSUED. IRREGULAR SECTION.

Lateral Holes

Sec: 3 TWP: 5N RGE: 13E County: PITTSBURG

SW SE NE SW

1443 FSL 2292 FWL of 1/4 SEC

Depth of Deviation: 8139 Radius of Turn: 633 Direction: 175 Total Length: 7398

Measured Total Depth: 16170 True Vertical Depth: 8864 End Pt. Location From Release, Unit or Property Line: 1443

FOR COMMISSION USE ONLY

1134111

Status: Accepted

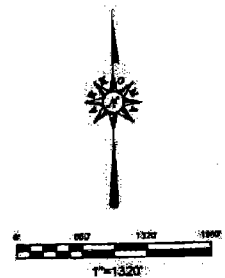
API 121-24777

S.H.L. Sec. 34-6N-13E LM.
B.H.L. Sec. 3-5N-13E LM.

bp Well Location Plat SHOWING FINAL PAD ELEVATION

Operator: BP AMERICA PRODUCTION COMPANY
Lease Name and No.: HUNT-GARRETT 4-34/3H
Footage: 539' FNL - 1740' FWL FINAL PAD ELEV. = 730' Good Site? YES
Section: 34 Township: 6N Range: 13E LM.
County: Pittsburg State of Oklahoma
Alternate Loc.: N/A
Terrain at Loc.: Location fell in open cattle pasture, ±121' West of a NW-SE of barbed-wire fence.

Accessibility: From the West.
Directions: From the "Arpeler Gas Station" in Arpeler, OK, go 0.5 mile East on U.S. Highway 270/State Highway 1, continue East onto "Daisy Rd" for 1.0 mile to an existing Unit Petroleum lease road near the Southwest Corner of Section 34, then follow the road ±0.6 mile Northeastly to the N/2 of Section 34-6N-13E.



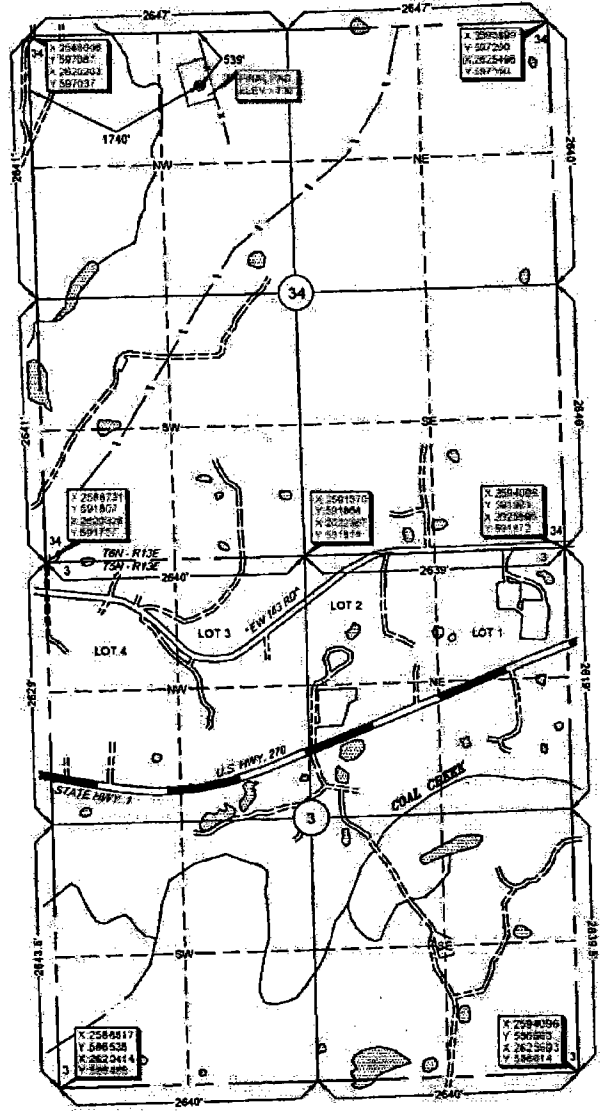
GPS DATUM
NAD: 83
OK SOUTH ZONE

GPS DATUM
NAD: 27
OK SOUTH ZONE

Surface Hole Loc.:
Lat: 34°57'18.25"N
Lon: 95°55'28.51"W
X: 2590358
Y: 596585

Surface Hole Loc.:
Lat: 34°57'17.91"N
Lon: 95°55'27.52"W
X: 2621956
Y: 596536

Quarter Section distances may be assumed true & Government Survey Plat as shown is a proportional distance from opposing section corner or occupier thereof, and may not have been measured on-the-ground, and hence, does not represent a true boundary survey.



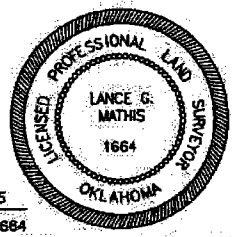
Plat notes that this location was staked on the ground under the supervision of a Licensed Professional Land Surveyor. The accuracy of this survey is not guaranteed. The survey was conducted by Arkoma Surveying and Mapping, generally following the instructions of the client. GPS data is obtained from RTK - GPS.

NOTE: X and Y data shown herein for Station Corners may NOT have been approved for the ground, and hence, does NOT represent a true boundary survey.

survey and plat by:
Arkoma Surveying and Mapping, PLLC
P.O. Box 238, Wilburton, OK 74678
Ph. 918-465-5711 Fax 918-465-5030
Certificate of Authorization No. 5348
Expires June 30, 2016
Invoice # 5385-A-A-FPE
Date Staked: 04/21/15 By: Z.D.
Date Drawn: 04/22/15 By: J.H.
BHL Sec. Added: 09/10/15 By: K.M.
Issued FPE: 10/27/15 By: J.H.

Certification:
This is to certify that this Well Location Plat represents the results of a survey made on the ground performed under the supervision of the undersigned.

Lance G. Mathis 10/28/15
LANCE G. MATHIS OK LPLS 1664



7/13/16

Oklahoma Corporation Commission
Oil & Gas Conservation Division
Post Office Box 52000
Oklahoma City, Oklahoma 73152-2000
Rule 165: 10-3-25

Form 1002A

1016EZ

API No.: 121247770000
OTC Prod. Unit No.: 12121764600000

Completion Report

Spud Date: January 26, 2016
Drilling Finished Date: February 26, 2016
1st Prod Date: July 13, 2016
Completion Date: July 13, 2016

Drill Type: HORIZONTAL HOLE

Min Gas Allowable: Yes

Well Name: HUNT-GARRETT 4-34/3H

Purchaser/Measurer: MARKWEST

Location: PITTSBURG 34 6N 13E
SE NW NE NW
539 FNL 1740 FWL of 1/4 SEC
Latitude: -95.924311 Longitude: 34.954975
Derrick Elevation: 758 Ground Elevation: 732

Multinuit;

First Sales Date: 07/13/2016

34-06N-13E: 49% 217646 I
03-05N-13E: 51% 217646A I

Operator: BP AMERICA PRODUCTION COMPANY 1640

737 N ELDRIDGE PKWY
HOUSTON, TX 77079-4411

Completion Type		Location Exception		Increased Density	
X	Single Zone	Order No		Order No	
	Multiple Zone	642681		642597	
	Commingled			642641	

Casing and Cement							
Type	Size	Weight	Grade	Feet	PSI	SAX	Top of CMT
SURFACE	13 3/8	54.5	J-55 LTC	370		355	SURFACE
INTERMEDIATE	9 5/8	40	J-55 LTC	6026		990	513
PRODUCTION	5 1/2	20	P-110 LTC	16170		2405	3843

Liner								
Type	Size	Weight	Grade	Length	PSI	SAX	Top Depth	Bottom Depth
There are no Liner records to display.								

Total Depth: 16170

Packer	
Depth	Brand & Type
There are no Packer records to display.	

Plug	
Depth	Plug Type
There are no Plug records to display.	

7/13/16 319WDFD 1

XMT-shale

August 18, 2016

ER ER

1 of 3

2016 1321339

DR

Initial Test Data										
Test Date	Formation	Oil BBL/Day	Oil-Gravity (API)	Gas MCF/Day	Gas-Oil Ratio Cu FT/BBL	Water BBL/Day	Pumpin or Flowing	Initial Shut-In Pressure	Choke Size	Flow Tubing Pressure
Jul 13, 2016	WOODFORD			4701			FLOWING		20/128	

Completion and Test Data by Producing Formation																		
Formation Name: WOODFORD	Code: 319WDFD	Class: GAS																
<table border="1"> <thead> <tr> <th colspan="2">Spacing Orders</th> </tr> <tr> <th>Order No</th> <th>Unit Size</th> </tr> </thead> <tbody> <tr> <td>569273 (34)</td> <td>640 ✓</td> </tr> <tr> <td>577931 (03)</td> <td>640 ✓</td> </tr> <tr> <td>642890</td> <td>MULTIUNIT</td> </tr> </tbody> </table>		Spacing Orders		Order No	Unit Size	569273 (34)	640 ✓	577931 (03)	640 ✓	642890	MULTIUNIT	<table border="1"> <thead> <tr> <th colspan="2">Perforated Intervals</th> </tr> <tr> <th>From</th> <th>To</th> </tr> </thead> <tbody> <tr> <td>8817</td> <td>15895</td> </tr> </tbody> </table>	Perforated Intervals		From	To	8817	15895
Spacing Orders																		
Order No	Unit Size																	
569273 (34)	640 ✓																	
577931 (03)	640 ✓																	
642890	MULTIUNIT																	
Perforated Intervals																		
From	To																	
8817	15895																	
<table border="1"> <thead> <tr> <th>Acid Volumes</th> </tr> </thead> <tbody> <tr> <td>There are no Acid Volume records to display.</td> </tr> </tbody> </table>		Acid Volumes	There are no Acid Volume records to display.	<table border="1"> <thead> <tr> <th>Fracture Treatments</th> </tr> </thead> <tbody> <tr> <td>26-STAGE FRAC W/301,035 GAL CLEAN VOLUME AND 2,575,190# OTTAWA 40/70</td> </tr> </tbody> </table>	Fracture Treatments	26-STAGE FRAC W/301,035 GAL CLEAN VOLUME AND 2,575,190# OTTAWA 40/70												
Acid Volumes																		
There are no Acid Volume records to display.																		
Fracture Treatments																		
26-STAGE FRAC W/301,035 GAL CLEAN VOLUME AND 2,575,190# OTTAWA 40/70																		

Formation	Top
-----------	-----

Were open hole logs run? No
Date last log run:

Were unusual drilling circumstances encountered? No
Explanation:

Other Remarks
SHUT IN PRESSURE NOT AVAILABLE. WELL WENT FROM FLOWBACK TANK TO SALES. 2 7/8" 6.5# J-55 TUBING @ 8580'. OCC -THIS DOCUMENT IS ACCEPTED BASED ON THE DATA SUBMITTED. THE FINAL LOCATION EXCEPTION ORDER HAS NOT BEEN ISSUED. IRREGULAR SECTION.