

Oklahoma Corporation Commission
Oil & Gas Conservation Division
Post Office Box 52000
Oklahoma City, Oklahoma 73152-2000
Rule 165: 10-3-25

Form 1002A

API No.: 35029213110001

Completion Report

Spud Date: January 25, 2016

OTC Prod. Unit No.:

Drilling Finished Date: February 11, 2016

1st Prod Date: May 01, 2016

Completion Date: March 20, 2016

Drill Type: HORIZONTAL HOLE

Min Gas Allowable: Yes

Well Name: BELLETTINI TRUST 2-5/32H

Purchaser/Measurer: FOUR WINDS

Location: COAL 5 1N 10E
NW NE SE NE
1499 FNL 603 FEL of 1/4 SEC
Latitude: 34.58857 Longitude: -96.2688103
Derrick Elevation: 0 Ground Elevation: 726

First Sales Date: 05/01/2016

Operator: BRAVO ARKOMA LLC 23562

1323 E 71ST ST STE 400
TULSA, OK 74136-5067

Completion Type	
X	Single Zone
	Multiple Zone
	Commingled

Location Exception
Order No
652073

Increased Density
Order No
646064

Casing and Cement							
Type	Size	Weight	Grade	Feet	PSI	SAX	Top of CMT
CONDUCTOR	20			40			SURFACE
SURFACE	9 5/8	36	J-55	1000		310	SURFACE
PRODUCTION	5 1/2	20	P-110	13383		1555	4415

Liner								
Type	Size	Weight	Grade	Length	PSI	SAX	Top Depth	Bottom Depth
There are no Liner records to display.								

Total Depth: 13385

Packer	
Depth	Brand & Type
There are no Packer records to display.	

Plug	
Depth	Plug Type
There are no Plug records to display.	

Initial Test Data										
Test Date	Formation	Oil BBL/Day	Oil-Gravity (API)	Gas MCF/Day	Gas-Oil Ratio Cu FT/BBL	Water BBL/Day	Pumpin or Flowing	Initial Shut-In Pressure	Choke Size	Flow Tubing Pressure
May 29, 2016	WOODFORD			3305		1515	FLOWING			345

Completion and Test Data by Producing Formation										
Formation Name: WOODFORD			Code: 319WDFD			Class: GAS				
Spacing Orders				Perforated Intervals						
Order No	Unit Size			From			To			
644686	640			7899			13293			
645052	640									
652072	MULTIUNIT									
Acid Volumes				Fracture Treatments						
19,992 GALLONS 15% HCL				210,594 BARRELS, 5,976,592 POUNDS 40/70						

Formation	Top
CANEY	7538
WOODFORD	7826

Were open hole logs run? No
Date last log run: February 11, 2016
Were unusual drilling circumstances encountered? No
Explanation:

Other Remarks
There are no Other Remarks.

Lateral Holes
Sec: 32 TWP: 2N RGE: 10E County: COAL NW NW NE NE 160 FNL 1017 FEL of 1/4 SEC Depth of Deviation: 7289 Radius of Turn: 342 Direction: 353 Total Length: 6631 Measured Total Depth: 13385 True Vertical Depth: 7774 End Pt. Location From Release, Unit or Property Line: 160

FOR COMMISSION USE ONLY
Status: Accepted
1133781

RECEIVED

Form 1002A Rev. 2009

AUG 10 2016

OKLAHOMA CORPORATION COMMISSION

API NO. 35-029-21311

PLEASE TYPE OR USE BLACK INK ONLY

OKLAHOMA CORPORATION COMMISSION Oil & Gas Conservation Division Post Office Box 52000 Oklahoma City, Oklahoma 73152-2000 Rule 165.10-3-25

NOTE: Attach copy of original 1002A if recompletion or reentry.

ORIGINAL AMENDED (Reason)

update to correct first/last perms

COMPLETION REPORT

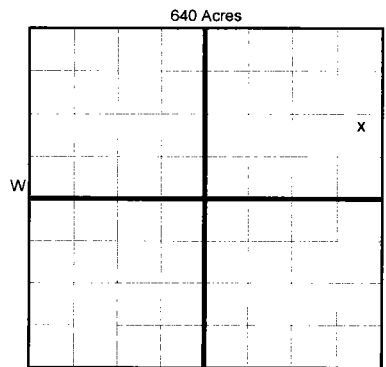
TYPE OF DRILLING OPERATION STRAIGHT HOLE DIRECTIONAL HOLE HORIZONTAL HOLE SERVICE WELL

SPUD DATE 1/25/16 DRLG FINISHED DATE 2/11/16 DATE OF WELL COMPLETION 3/20/16 1st PROD DATE 5/1/2016 RECOMP DATE

COUNTY Coal SEC 5 TWP 1N RGE 10E LEASE NAME Bellettini WELL NO. 2-5/32H FNL OF 1/4 SEC 1,499' FEL OF 1/4 SEC 603 ELEVATIO N Derrick Ground 726' Latitude (if known) 34.58857

Longitude (if known) -96.2688103

OPERATOR NAME Bravo Arkoma OTC/OCC OPERATOR NO. 23562 ADDRESS 1323 East 71st Street, Suite 400 CITY Tulsa STATE OK ZIP 74136



COMPLETION TYPE

SINGLE ZONE MULTIPLE ZONE Application Date COMMINGLED Application Date LOCATION EXCEPTION ORDER INCREASED DENSITY ORDER NO. 646064

CASING & CEMENT (Form 1002C must be attached)

Table with columns: TYPE, SIZE, WEIGHT, GRADE, FEET, PSI, SAX, TOP OF CMT. Rows include CONDUCTOR, SURFACE, INTERMEDIATE, PRODUCTION, LINER.

PACKER @ BRAND & TYPE PLUG @ TYPE PLUG @ TYPE

COMPLETION & TEST DATA BY PRODUCING FORMATION

Table with columns: FORMATION, SPACING & SPACING ORDER NUMBER, CLASS, PERFORATED INTERVALS, ACID/VOLUME, FRACTURE TREATMENT.

Min Gas Allowable (165.10-17-7) Gas Purchaser/Measurer First Sales Date

INITIAL TEST DATA

Table with columns: INITIAL TEST DATE, OIL-BBL/DAY, GAS-MCF/DAY, GAS-OIL RATIO CU FT/BBL, WATER-BBL/DAY, PUMPING OR FLOWING, INITIAL SHUT-IN PRESSURE, CHOKE SIZE, FLOW TUBING PRESSURE.

AS SUBMITTED

A record of the formations drilled through, and pertinent remarks are presented on the reverse. I declare that I have knowledge of the contents of this report and am authorized by my organization to make this report, which was prepared by me or under my supervision and direction, with the data and facts stated herein to be true, correct, and complete to the best of my knowledge and belief.

Signature: Brandon K. Hemphill, NAME (PRINT OR TYPE), DATE, PHONE NUMBER, ADDRESS, CITY, STATE, ZIP, EMAIL ADDRESS

RECEIVED

Form 1002A Rev. 2009

JUN 22 2016

OKLAHOMA CORPORATION COMMISSION

API NO. 35-029-21311

PLEASE TYPE OR USE BLACK INK ONLY NOTE:

Attach copy of original 1002A if recompletion or reentry.

OKLAHOMA CORPORATION COMMISSION Oil & Gas Conservation Division Post Office Box 52000 Oklahoma City, Oklahoma 73152-2000 Rule 165:10-3-25

ORIGINAL AMENDED (Reason)

COMPLETION REPORT

TYPE OF DRILLING OPERATION STRAIGHT HOLE DIRECTIONAL HOLE HORIZONTAL HOLE SERVICE WELL

SPUD DATE 1/25/16 DRLG FINISHED DATE 2/11/16

COUNTY Coal SEC 5 TWP 1N RGE 10E LEASE NAME Belletini Trust WELL NO. 2-5/32H

DATE OF WELL COMPLETION 3/20/16 1st PROD DATE 5/1/2016

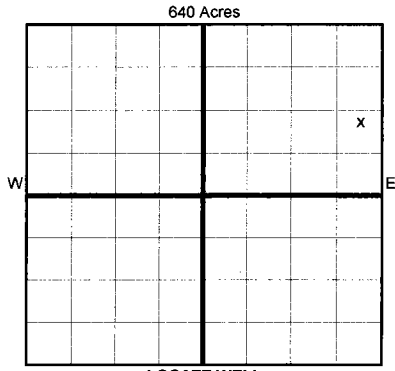
NW 1/4 NE 1/4 SE 1/4 NE 1/4 1499 603 ELEVATION N Derrick Ground 726' Latitude (if known) 34.58857

RECOMP DATE Longitude (if known) -96.2688103

OPERATOR NAME Bravo Arkoma LLC OTC/OCC OPERATOR NO. 23562

ADDRESS 1323 East 71st Street, Suite 400

CITY Tulsa STATE OK ZIP 74136



LOCATE WELL

COMPLETION TYPE SINGLE ZONE MULTIPLE ZONE Application Date COMMINGLED Application Date LOCATION 652073 F.D. 646106 EXCEPTION ORDER INCREASED DENSITY ORDER NO. 646064

Table with columns: TYPE, SIZE, WEIGHT, GRADE, FEET, PSI, SAX, TOP OF CMT. Rows include CONDUCTOR (20", 40'), SURFACE, INTERMEDIATE (9 5/8", 36#, J-55, 1,000'), PRODUCTION (5 1/2", 20#, P-110, 13,383'), LINER, and TOTAL DEPTH (13,385').

PACKER @ BRAND & TYPE PLUG @ TYPE PLUG @ TYPE PLUG @ TYPE

COMPLETION & TEST DATA BY PRODUCING FORMATION 319 WDFD

Table with columns: FORMATION, SPACING & SPACING ORDER NUMBER, CLASS, PERFORATED INTERVALS, ACID/VOLUME, FRACTURE TREATMENT. Includes handwritten notes like 'Woodford', '319 WDFD', and 'Monitor Report to Frac Focus'.

Min Gas Allowable (165:10-17-7) Gas Purchaser/Measurer First Sales Date Four Winds 5/1/2016

Table with columns: INITIAL TEST DATA, INITIAL TEST DATE, OIL-BBL/DAY, GAS-MCF/DAY, WATER-BBL/DAY, PUMPING OR FLOWING, INITIAL SHUT-IN PRESSURE, CHOKESIZE, FLOW TUBING PRESSURE.

A record of the formations drilled through, and pertinent remarks are presented on the reverse. I declare that I have knowledge of the contents of this report and am authorized by my organization to make this report, which was prepared by me or under my supervision and direction, with the data and facts stated herein to be true, correct, and complete to the best of my knowledge and belief. Signature: Brandon K. Hemphill, Address: 1323 East 71st Street, Suite 400, Tulsa, OK 74136, Email: bhemphill@bravonr.com

