

Oklahoma Corporation Commission  
 Oil & Gas Conservation Division  
 Post Office Box 52000  
 Oklahoma City, Oklahoma 73152-2000  
 Rule 165: 10-3-25

Form 1002A

API No.: 35103238330003

**Completion Report**

Spud Date: February 27, 2004

OTC Prod. Unit No.: 103-113037

Drilling Finished Date: March 03, 2004

**Amended**

1st Prod Date: March 29, 2004

Amend Reason: SEE REMARKS

Completion Date: April 09, 2004

Recomplete Date: August 09, 2016

**Drill Type: STRAIGHT HOLE**

Well Name: BILLINGS 7-15

Purchaser/Measurer:

Location: NOBLE 15 23N 2W  
 SE NE NE SE  
 2167 FSL 165 FEL of 1/4 SEC  
 Derrick Elevation: 967 Ground Elevation: 958

First Sales Date:

Operator: CHESAPEAKE OPERATING LLC 17441  
 PO BOX 18496  
 6100 N WESTERN AVE  
 OKLAHOMA CITY, OK 73154-0496

Completion Type	
<input type="checkbox"/>	Single Zone
<input type="checkbox"/>	Multiple Zone
<input checked="" type="checkbox"/>	Commingled

Location Exception
Order No
483050

Increased Density
Order No
544761

Casing and Cement							
Type	Size	Weight	Grade	Feet	PSI	SAX	Top of CMT
SURFACE	8 5/8	24	J-55	325		200	SURFACE
PRODUCTION	5 1/2	15.5	J-55	3000		310	1685

Liner								
Type	Size	Weight	Grade	Length	PSI	SAX	Top Depth	Bottom Depth
There are no Liner records to display.								

**Total Depth: 3000**

Packer	
Depth	Brand & Type
There are no Packer records to display.	

Plug	
Depth	Plug Type
2360	CIBP
2720	CIBP

Initial Test Data

Test Date	Formation	Oil BBL/Day	Oil-Gravity (API)	Gas MCF/Day	Gas-Oil Ratio Cu FT/BBL	Water BBL/Day	Pumpin or Flowing	Initial Shut-In Pressure	Choke Size	Flow Tubing Pressure
Apr 25, 2016	PAWHUSKA-HOOVER-ELGIN									

**Completion and Test Data by Producing Formation**

Formation Name: PAWHUSKA

Code: 406PHSK

Class: TA

**Spacing Orders**

Order No	Unit Size
444300	40

**Perforated Intervals**

From	To
2024	2076

**Acid Volumes**

There are no Acid Volume records to display.

**Fracture Treatments**

There are no Fracture Treatments records to display.

Formation Name: HOOVER

Code: 406HOVR

Class: TA

**Spacing Orders**

Order No	Unit Size
444300	40

**Perforated Intervals**

From	To
2094	2143

**Acid Volumes**

There are no Acid Volume records to display.

**Fracture Treatments**

There are no Fracture Treatments records to display.

Formation Name: ELGIN

Code: 406ELGN

Class: TA

**Spacing Orders**

Order No	Unit Size
444300	40

**Perforated Intervals**

From	To
2256	2293

**Acid Volumes**

There are no Acid Volume records to display.

**Fracture Treatments**

There are no Fracture Treatments records to display.

Formation Name: OREAD

Code: 406ORED

Class: DRY

**Spacing Orders**

Order No	Unit Size
444300	40

**Perforated Intervals**

From	To
2389	2426

**Acid Volumes**

There are no Acid Volume records to display.

**Fracture Treatments**

There are no Fracture Treatments records to display.

Formation Name: ENDICOTT

Code: 406ENDC

Class: DRY

**Spacing Orders**

Order No	Unit Size
444300	40

**Perforated Intervals**

From	To
2503	2516

**Acid Volumes**

There are no Acid Volume records to display.

**Fracture Treatments**

There are no Fracture Treatments records to display.

Formation Name: LOVELL

Code: 406LVLL

Class: DRY

**Spacing Orders**

Order No	Unit Size
444300	40

**Perforated Intervals**

From	To
2646	2659

**Acid Volumes**

There are no Acid Volume records to display.

**Fracture Treatments**

There are no Fracture Treatments records to display.

Formation Name: HASKELL

Code: 406HSKL

Class: DRY

**Spacing Orders**

Order No	Unit Size
444300	40

**Perforated Intervals**

From	To
2733	2750

**Acid Volumes**

There are no Acid Volume records to display.

**Fracture Treatments**

There are no Fracture Treatments records to display.

Formation Name: TONKAWA

Code: 406TNKW

Class: DRY

**Spacing Orders**

Order No	Unit Size
444300	40

**Perforated Intervals**

From	To
2771	2846

**Acid Volumes**

There are no Acid Volume records to display.

**Fracture Treatments**

There are no Fracture Treatments records to display.

Formation Name: PAWHUSKA-HOOVER-ELGIN

Code:

Class: TA

Were open hole logs run? Yes

Formation	Top
HERINGTON	509
FT RILEY	679
EBERT	1752
NEWKIRK	1969
PAWHUSKA	2023
HOOVER	2094
ELGIN	2256
OREAD	2384
ENDICOTT	2501
LOVELL	2576
HASKELL	2733
TONKAWA	2771

Date last log run: March 02, 2004

Were unusual drilling circumstances encountered? No

Explanation:

Other Remarks
RE-CLASSIFYING AS TEMPORARILY ABANDONED, REPORTING FORMATIONS OMITTED ON PREVIOUS 1002A, AND CORRECTING SURFACE CASING DEPTH AND FORM 1002C.

FOR COMMISSION USE ONLY	
Status: Accepted	1134048

API NO. 103-23833  
 OTC PROD.  
 UNIT NO. 103-113037

PLEASE TYPE OR USE BLACK INK ONLY  
 NOTE:  
 Attach copy of original 1002A if recompletion or reentry.

OKLAHOMA CORPORATION COMMISSION  
 Oil & Gas Conservation Division  
 Post Office Box 52000  
 Oklahoma City, Oklahoma 73152-2000  
 Rule 165:10-3-25

RECEIVED

Form 1002A  
 Rev. 2009

MAY 26 2016

ORIGINAL  
 AMENDED  
 Reason Amended See remarks

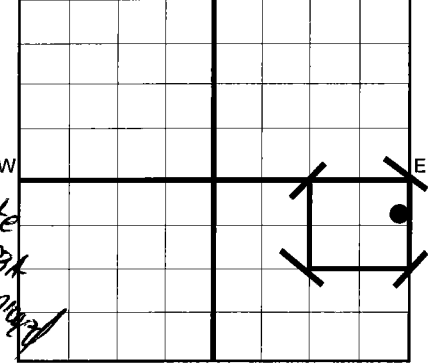
COMPLETION REPORT

TYPE OF DRILLING OPERATION  
 STRAIGHT HOLE  DIRECTIONAL HOLE  HORIZONTAL HOLE  
 SERVICE WELL

SPUD DATE 2/27/2004  
 DRLG FINISHED DATE 3/3/2004  
 DATE OF WELL COMPLETION 4/9/2004  
 1ST PROD DATE 3/29/2004  
 RECOMP DATE 11/8/2007  
 Longitude 8-9-2016  
 (if Known)

OKLAHOMA CORPORATION COMMISSION  
 640 Acres

County Noble SEC 15 TWP 23N RGE 2W  
 LEASE NAME Billings WELL NO 7-15  
 SHL SE 1/4 NE 1/4 NE 1/4 SE 1/4 FSL 2,167 1/4 SEC 165  
 ELEVATION 967 Ground 958  
 OPERATOR NAME CHESAPEAKE OPERATING, L.L.C. OTC/OCC OPERATOR NO. 17441  
 ADDRESS P.O. BOX 18496  
 CITY OKLAHOMA CITY STATE OK ZIP 73154



COMPLETION TYPE  
 SINGLE ZONE  
 MULTIPLE ZONE  
 COMMINGLED Approved  
 LOCATION 483050  
 EXCEPTION ORDER NO.  
 INCREASED DENSITY ORDER NO. 544761

CASING & CEMENT (Form 1002C must be attached)

	TYPE	SIZE	WEIGHT	GRADE	FEET	PSI	SAX	TOP
CONDUCTOR								
SURFACE		8-5/8"	24#	J-55	325		200	Surface
INTERMEDIATE								
PRODUCTION		5-1/2"	15.5#	J-55	3,000		310	1,685
LINER								
								3,000

PACKER @ BRAND & TYPE  
 PACKER @ BRAND & TYPE

PLUG @ TYPE PLUG @ 2,360 TYPE CIBP  
 PLUG @ TYPE PLUG @ 2,720 TYPE CIBP

TOTAL DEPTH

COMPLETION & TEST DATA BY PRODUCING FORMATION

FORMATION	Pawhuska	Hoover	Elgin	Oread	Endicott Lovell	Haskell Tonkawa
SPACING & SPACING	40	40	40	40	40	40
ORDER NUMBER	444300	444300	444300	444300	444300	444300
CLASS: Oil, Gas, Dry, Inj. Disp, Comm Disp, Svc	T/A	T/A	T/A	below bridge plug	below bridge plug	below bridge plug
PERFORATED INTERVALS	2024 - 2076	2094 - 2143	2256 - 2293	2389 - 2426	Endicott Lovell 2503 - 2516 2646 - 2659	Haskell Tonkawa 2733 - 2750 2771 - 2846
ACID/VOLUME						
FRACTURE TREATMENT (Fluids/Prop Amounts)						

Minimum Gas Allowable (165:10-17-7)

Gas Purchaser/Measurer

OR

1st Sales Date

INITIAL TEST DATA

Oil Allowable (165:10-13-3)

INITIAL TEST DATE	4/25/2016
OIL-BBL/DAY	0
OIL-GRAVITY ( API)	
GAS-MCF/DAY	0
GAS-OIL RATIO CU FT/BBL	
WATER-BBL/DAY	0
PUMPING OR FLOWING	
INITIAL SHUT-IN PRESSURE	
CHOKE SIZE	
FLOW TUBING PRESSURE	

AS SUBMITTED

A record of the formations drilled through, and pertinent remarks are presented on the reverse. I declare that I have knowledge of the contents of this report and am authorized by my organization to make this report, which was prepared by me or under my supervision and direction, with the data and facts stated herein to be true, correct, and complete to the best of my knowledge and belief.

Juanita Cooper  
 SIGNATURE  
 P.O. BOX 18496  
 ADDRESS  
 OKLAHOMA CITY  
 CITY  
 OK  
 STATE  
 73154  
 ZIP  
 JUANITA COOPER - SR. REGULATORY ANALYST  
 NAME (PRINT OR TYPE)  
 5/25/2016  
 DATE  
 405-848-8000  
 PHONE NUMBER  
 juanita.cooper@chk.com  
 EMAIL ADDRESS

PLEASE TYPE OR USE BLACK INK ONLY  
FORMATION RECORD

Give formation names and tops, if available, or descriptions and thickness of formations drilled through. Show intervals cored or drillstem tested.

LEASE NAME Billings

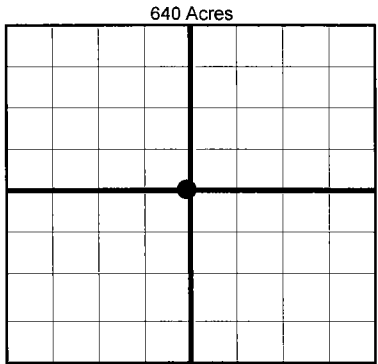
WELL NO. 7-15

NAMES OF FORMATIONS	TOP
Herington	509
Ft. Riley	679
Ebert	1,752
Newkirk	1,969
Pawhuska	2,023
Hoover	2,094
Elgin	2,256
Oread	2,384
Endicott	2,501
Lovell	2,576
Haskell	2,733
Tonkawa	2,771

FOR COMMISSION USE ONLY	
ITD on file <input type="checkbox"/> YES <input type="checkbox"/> NO	
APPROVED _____ DISAPPROVED _____	2) Reject Codes
_____	
_____	
_____	
_____	

Were open hole logs run?	<input checked="" type="checkbox"/> yes	<input type="checkbox"/> no
Date Last log was run	3/2/2004	
Was CO <sub>2</sub> encountered?	<input type="checkbox"/> yes	<input checked="" type="checkbox"/> no at what depths?
Was H <sub>2</sub> S encountered?	<input type="checkbox"/> yes	<input checked="" type="checkbox"/> no at what depths?
Were unusual drilling circumstances encountered?	<input type="checkbox"/> yes	<input checked="" type="checkbox"/> no
If yes, briefly explain.		

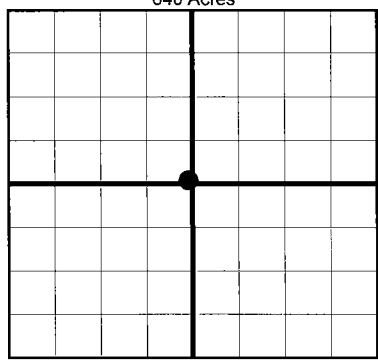
Other remarks: Reclassifying as temporarily abandoned, reporting formations omitted on previous 1002A, and correcting surface casing depth and Form 1002C



If more than three drainholes are proposed, attach a separate sheet indicating the necessary information.

Direction must be stated in degrees azimuth. Please note, the horizontal drainhole and its end point must be located within the boundaries of the lease or spacing unit.

**Directional surveys are required for all drainholes and directional wells.**



**BOTTOM HOLE LOCATION FOR DIRECTIONAL HOLE**

SEC	TWP	RGE	COUNTY				
Spot Location	1/4	1/4	1/4	1/4	Feet From 1/4 Sec Lines	FSL	FWL
Measured Total Depth	True Vertical Depth		BHL From Lease, Unit, or Property Line:				

**BOTTOM HOLE LOCATION FOR HORIZONTAL HOLE: (LATERALS)**

**LATERAL #1**

SEC	TWP	RGE	COUNTY				
Spot Location	1/4	1/4	1/4	1/4	Feet From 1/4 Sec Lines	FSL	FWL
Depth of Deviation	Radius of Turn		Direction		Total Length		
Measured Total Depth	True Vertical Depth		BHL From Lease, Unit, or Property Line:				

**LATERAL #2**

SEC	TWP	RGE	COUNTY				
Spot Location	1/4	1/4	1/4	1/4	Feet From 1/4 Sec Lines	FSL	FWL
Depth of Deviation	Radius of Turn		Direction		Total Length		
Measured Total Depth	True Vertical Depth		BHL From Lease, Unit, or Property Line:				

**LATERAL #3**

SEC	TWP	RGE	COUNTY				
Spot Location	1/4	1/4	1/4	1/4	Feet From 1/4 Sec Lines	FSL	FWL
Depth of Deviation	Radius of Turn		Direction		Total Length		
Measured Total Depth	True Vertical Depth		BHL From Lease, Unit, or Property Line:				