

Oklahoma Corporation Commission  
Oil & Gas Conservation Division  
Post Office Box 52000  
Oklahoma City, Oklahoma 73152-2000  
Rule 165: 10-3-25

Form 1002A

API No.: 35103236760003

**Completion Report**

Spud Date: June 12, 2001

OTC Prod. Unit No.: 103-107531

Drilling Finished Date: June 17, 2001

1st Prod Date: August 27, 2001

**Amended**

Completion Date: August 30, 2001

Amend Reason: RE-CLASSIFYING AS TEMPORARILY ABANDONED

Recomplete Date: August 09, 2016

**Drill Type: STRAIGHT HOLE**

Well Name: MILLER 1-21

Purchaser/Measurer:

Location: NOBLE 21 23N 2W  
E2 SW SW NW  
330 FSL 500 FWL of 1/4 SEC  
Derrick Elevation: 1024 Ground Elevation: 1016

First Sales Date:

Operator: CHESAPEAKE OPERATING LLC 17441  
PO BOX 18496  
6100 N WESTERN AVE  
OKLAHOMA CITY, OK 73154-0496

Completion Type	
<input type="checkbox"/>	Single Zone
<input type="checkbox"/>	Multiple Zone
<input checked="" type="checkbox"/>	Commingled

Location Exception
Order No
There are no Location Exception records to display.

Increased Density
Order No
563128

Casing and Cement							
Type	Size	Weight	Grade	Feet	PSI	SAX	Top of CMT
SURFACE	8 5/8	24	J-55	320		220	SURFACE
PRODUCTION	5 1/2	15.5	J-55	3100		320	1500

Liner								
Type	Size	Weight	Grade	Length	PSI	SAX	Top Depth	Bottom Depth
There are no Liner records to display.								

**Total Depth: 3100**

Packer	
Depth	Brand & Type
There are no Packer records to display.	

Plug	
Depth	Plug Type
2810	CEMENTED BRIDGE PLUG

Initial Test Data										
Test Date	Formation	Oil BBL/Day	Oil-Gravity (API)	Gas MCF/Day	Gas-Oil Ratio Cu FT/BBL	Water BBL/Day	Pumpin or Flowing	Initial Shut-In Pressure	Choke Size	Flow Tubing Pressure
Jul 15, 2016	HOOVER-ELGIN- ENDICOTT-LOVELL									

August 10, 2016

**Completion and Test Data by Producing Formation**

Formation Name: HOOVER

Code: 406HOVR

Class: TA

**Spacing Orders**

Order No	Unit Size
343961	40

**Perforated Intervals**

From	To
2196	2278

**Acid Volumes**

There are no Acid Volume records to display.

**Fracture Treatments**

There are no Fracture Treatments records to display.

Formation Name: ELGIN

Code: 406ELGN

Class: TA

**Spacing Orders**

Order No	Unit Size
343961	40

**Perforated Intervals**

From	To
2364	2472

**Acid Volumes**

There are no Acid Volume records to display.

**Fracture Treatments**

There are no Fracture Treatments records to display.

Formation Name: ENDICOTT

Code: 406ENDC

Class: TA

**Spacing Orders**

Order No	Unit Size
343961	40

**Perforated Intervals**

From	To
2606	2614

**Acid Volumes**

There are no Acid Volume records to display.

**Fracture Treatments**

There are no Fracture Treatments records to display.

Formation Name: LOVELL

Code: 406LVLL

Class: TA

**Spacing Orders**

Order No	Unit Size
343961	40

**Perforated Intervals**

From	To
2712	2718

**Acid Volumes**

There are no Acid Volume records to display.

**Fracture Treatments**

There are no Fracture Treatments records to display.

Formation Name: HASKELL

Code: 406HSKL

Class: DRY

**Spacing Orders**

Order No	Unit Size
343961	40

**Perforated Intervals**

From	To
2836	2840

**Acid Volumes**

There are no Acid Volume records to display.

**Fracture Treatments**

There are no Fracture Treatments records to display.

Formation Name: TONKAWA

Code: 406TNKW

Class: DRY

**Spacing Orders**

Order No	Unit Size
343961	40

**Perforated Intervals**

From	To
2899	2930

**Acid Volumes**

There are no Acid Volume records to display.

**Fracture Treatments**

There are no Fracture Treatments records to display.

Formation Name: HOOVER-ELGIN-ENDICOTT-LOVELL

Code:

Class: TA

Formation	Top
HERINGTON	620
FT RILEY	819
EBERT	1852
PAWHUSKA	2104
HOOVER	2194
ELGIN	2356
OREAD	2435
ENDICOTT	2604
LOVELL	2620
HASKELL	2834
TONKAWA	2899

Were open hole logs run? Yes

Date last log run: June 16, 2001

Were unusual drilling circumstances encountered? No

Explanation:

**Other Remarks**

There are no Other Remarks.

**FOR COMMISSION USE ONLY**

1134046

Status: Accepted

API NO. 103-23676  
 OTC PROD.  
 UNIT NO. 103-107531

PLEASE TYPE OR USE BLACK INK ONLY  
 NOTE: Attach copy of original 1002A if recompletion or reentry.

OKLAHOMA CORPORATION COMMISSION  
 Oil & Gas Conservation Division  
 Post Office Box 52000  
 Oklahoma City, Oklahoma 73152-2000  
 Rule 165:10-3-25

RECEIVED  
 153543  
 Rev. 2008

JUL 27 2016

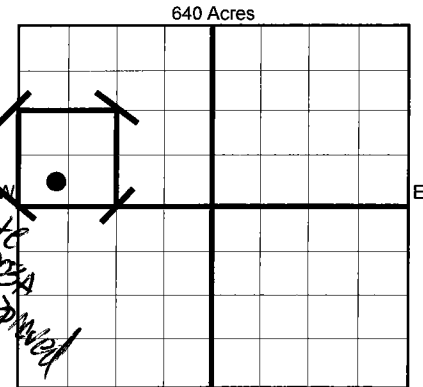
OKLAHOMA CORPORATION COMMISSION

ORIGINAL  
 AMENDED  
 Reason Amended **Reclassifying as temporarily abandoned**

COMPLETION REPORT

TYPE OF DRILLING OPERATION  
 STRAIGHT HOLE  DIRECTIONAL HOLE  HORIZONTAL HOLE  
 SERVICE WELL

SPUD DATE 6/12/2001  
 DRLG FINISHED DATE 6/17/2001  
 DATE OF WELL COMPLETION 8/30/2001  
 1ST PROD DATE 8/27/2001  
 RECOMP DATE ~~2/1/2009~~ 8-9-2016  
 Longitude (if Known)



County Noble SEC 21 TWP 23N RGE 2W  
 LEASE NAME Miller WELL NO 1-21  
 SHL E2 1/4 SW 1/4 Sw 1/4 NE 1/4 FSL 330 FWL OF 1/4 SEC 500  
 ELEVATION  
 Derrick Fl 1,024 Ground 1,016  
 OPERATOR NAME CHESAPEAKE OPERATING, L.L.C. OTC/OCC OPERATOR NO. 17441  
 ADDRESS P.O. BOX 18496  
 CITY OKLAHOMA CITY STATE OK ZIP 73154

COMPLETION TYPE  
 SINGLE ZONE  
 MULTIPLE ZONE  
 COMMINGLED Application Date Approved  
 LOCATION EXCEPTION ORDER NO. N/A  
 INCREASED DENSITY ORDER NO. 563128

CASING & CEMENT (Form 1002C must be attached)

TYPE	SIZE	WEIGHT	GRADE	FEET	PSI	SAX	TOP	
CONDUCTOR								
SURFACE	8-5/8"	24#	J-55	320		220	Surface	
INTERMEDIATE								
PRODUCTION	5-1/2"	15.5#	J-55	3,100		320	1,500	
LINER								
							TOTAL DEPTH	3,100

PACKER @ \_\_\_\_\_ BRAND & TYPE \_\_\_\_\_  
 PLUG @ \_\_\_\_\_ TYPE \_\_\_\_\_

PLUG @ 2,810 TYPE Cmtd BP  
 PLUG @ \_\_\_\_\_ TYPE \_\_\_\_\_

COMPLETION & TEST DATA BY PRODUCING FORMATION

FORMATION	Hoover	Elgin	Endicott	Lovell	Haskell	Tonkawa
SPACING & SPACING ORDER NUMBER	40 343961	40 343961	40 343961	40 343961	40 343961	40 343961
CLASS: Oil, Gas, Dry, Inj. Disp, Comm Disp, Svc	Temporarily Abandoned	Temporarily Abandoned	Temporarily Abandoned	Temporarily Abandoned	below bridge plug Dry	below bridge plug Dry
PERFORATED INTERVALS	2196 - 2278	2364 - 2472	2606 - 2614	2712 - 2718	2836 - 2840	2899 - 2930
ACID/VOLUME						
FRACTURE TREATMENT (Fluids/Prop Amounts)						

Minimum Gas Allowable (165:10-17-7) \_\_\_\_\_ Gas Purchaser/Measurer \_\_\_\_\_  
 OR  
 Oil Allowable (165:10-13-3) \_\_\_\_\_ 1st Sales Date \_\_\_\_\_

INITIAL TEST DATA

INITIAL TEST DATE	7/15/2016
OIL-BBL/DAY	0
OIL-GRAVITY ( API)	
GAS-MCF/DAY	0
GAS-OIL RATIO CU FT/BBL	
WATER-BBL/DAY	0
PUMPING OR FLOWING	
INITIAL SHUT-IN PRESSURE	
CHOKE SIZE	
FLOW TUBING PRESSURE	

**AS SUBMITTED**

A record of the formations drilled through, and pertinent remarks are presented on the reverse. I declare that I have knowledge of the contents of this report and am authorized by my organization to make this report, which was prepared by me or under my supervision and direction, with the data and facts stated herein to be true, correct, and complete to the best of my knowledge and belief.

Juanita Cooper SIGNATURE  
 P.O. BOX 18496 ADDRESS  
 OKLAHOMA CITY CITY  
 OK STATE  
 73154 ZIP  
 JUANITA COOPER - SR. REGULATORY ANALYST NAME (PRINT OR TYPE)  
 7/26/2016 DATE  
 405-848-8000 PHONE NUMBER  
 juanita.cooper@chk.com EMAIL ADDRESS

**PLEASE TYPE OR USE BLACK INK ONLY**  
FORMATION RECORD

Give formation names and tops, if available, or descriptions and thickness of formations drilled through. Show intervals cored or drillstem tested.

LEASE NAME Miller

WELL NO. 1-21

NAMES OF FORMATIONS	TOP
Herington	620
Ft. Riley	819
Ebert	1,852
Pawhuska	2,104
Hoover	2,194
Elgin	2,356
Oread	2,435
Endicott	2,604
Lovell	2,620
Haskell	2,834
Tonkawa	2,899

FOR COMMISSION USE ONLY		
ITD on file	<input type="checkbox"/> YES	<input type="checkbox"/> NO
APPROVED	DISAPPROVED	2) Reject Codes

Were open hole logs run?	<input checked="" type="checkbox"/> yes	<input type="checkbox"/> no
Date Last log was run	6/16/2001	
Was CO <sub>2</sub> encountered?	<input type="checkbox"/> yes	<input checked="" type="checkbox"/> no at what depths?
Was H <sub>2</sub> S encountered?	<input type="checkbox"/> yes	<input checked="" type="checkbox"/> no at what depths?
Were unusual drilling circumstances encountered?	<input type="checkbox"/> yes	<input checked="" type="checkbox"/> no
If yes, briefly explain.		

Other remarks:

---



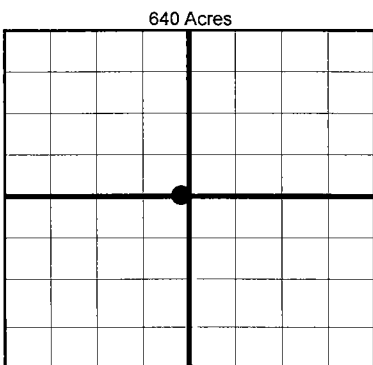
---



---



---



**BOTTOM HOLE LOCATION FOR DIRECTIONAL HOLE**

SEC	TWP	RGE	COUNTY		
Spot Location	1/4	1/4	1/4	1/4	Feet From 1/4 Sec Lines FSL FEL
Measured Total Depth	True Vertical Depth		BHL From Lease, Unit, or Property Line:		

**BOTTOM HOLE LOCATION FOR HORIZONTAL HOLE: (LATERALS)**

**LATERAL #1**

SEC	TWP	RGE	COUNTY		
Spot Location	1/4	1/4	1/4	1/4	Feet From 1/4 Sec Lines FSL FWL
Depth of Deviation	Radius of Turn		Direction	Total Length	
Measured Total Depth	True Vertical Depth		BHL From Lease, Unit, or Property Line:		

**LATERAL #2**

SEC	TWP	RGE	COUNTY		
Spot Location	1/4	1/4	1/4	1/4	Feet From 1/4 Sec Lines FSL FWL
Depth of Deviation	Radius of Turn		Direction	Total Length	
Measured Total Depth	True Vertical Depth		BHL From Lease, Unit, or Property Line:		

**LATERAL #3**

SEC	TWP	RGE	COUNTY		
Spot Location	1/4	1/4	1/4	1/4	Feet From 1/4 Sec Lines FSL FWL
Depth of Deviation	Radius of Turn		Direction	Total Length	
Measured Total Depth	True Vertical Depth		BHL From Lease, Unit, or Property Line:		

If more than three drainholes are proposed, attach a separate sheet indicating the necessary information.

Direction must be stated in degrees azimuth. Please note, the horizontal drainhole and its end point must be located within the boundaries of the lease or spacing unit.

**Directional surveys are required for all drainholes and directional wells.**

