

Oklahoma Corporation Commission
Oil & Gas Conservation Division
Post Office Box 52000
Oklahoma City, Oklahoma 73152-2000
Rule 165: 10-3-25

Form 1002A

API No.: 35043234570000

Completion Report

Spud Date: April 24, 2016

OTC Prod. Unit No.: 043-217531

Drilling Finished Date: June 06, 2016

1st Prod Date: July 12, 2016

Completion Date: July 07, 2016

Drill Type: HORIZONTAL HOLE

Min Gas Allowable: Yes

Well Name: SALISBURY 27-19-20 1H

Purchaser/Measurer: ENABLE

Location: DEWEY 27 19N 20W
S2 S2 SW SW
200 FSL 660 FWL of 1/4 SEC
Latitude: 36.0872112 Longitude: 99.325921497
Derrick Elevation: 0 Ground Elevation: 0

First Sales Date: 07/12/2016

Operator: TAPSTONE ENERGY LLC 23467

100 E MAIN ST
OKLAHOMA CITY, OK 73104-2509

Completion Type	
X	Single Zone
	Multiple Zone
	Commingled

Location Exception	
Order No	
653225	

Increased Density	
Order No	
There are no Increased Density records to display.	

Casing and Cement							
Type	Size	Weight	Grade	Feet	PSI	SAX	Top of CMT
SURFACE	9 5/8	36	J-55	1468	1000	692	SURFACE
PRODUCTION	7	26	P-110	12165	3842	380	6500

Liner								
Type	Size	Weight	Grade	Length	PSI	SAX	Top Depth	Bottom Depth
LINER	4 1/2	13.5	P-110	5934	9000	540	11901	17835

Total Depth: 17838

Packer	
Depth	Brand & Type
12990	HAL PLT

Plug	
Depth	Plug Type
There are no Plug records to display.	

Initial Test Data										
Test Date	Formation	Oil BBL/Day	Oil-Gravity (API)	Gas MCF/Day	Gas-Oil Ratio Cu FT/BBL	Water BBL/Day	Pumpin or Flowing	Initial Shut-In Pressure	Choke Size	Flow Tubing Pressure
Jul 20, 2016	MISSISSIPPIAN	78		2584	33128	3562	FLOWING		40/64	1320

Completion and Test Data by Producing Formation			
Formation Name: MISSISSIPPIAN		Code: 359MSSP	Class: GAS
Spacing Orders		Perforated Intervals	
Order No	Unit Size	From	To
652198	640	13190	17725
Acid Volumes		Fracture Treatments	
32,466 GALLONS 15% HCL		191,490 BARRELS, 5,638,554 POUNDS PROPPANT	

Formation	Top
BASE HEEBNER	6850
TONKAWA	7302
COTTAGE GROVE	7780
HOGSHOOTER	8090
OSWEGO LIMESTONE	8602
ATOKA	9438
MISSISSIPPIAN	10460

Were open hole logs run? Yes

Date last log run: June 07, 2016

Was H2S Encountered? Yes

Depth Encountered: 13107

Were unusual drilling circumstances encountered? No

Explanation:

Other Remarks
OCC - THIS DOCUMENT IS ACCEPTED BASED ON THE DATA SUBMITTED THE FINAL LOCATION EXCEPTION HAS NOT BEEN APPROVED.

Lateral Holes
Sec: 27 TWP: 19N RGE: 20W County: DEWEY
NE NE NW NW
86 FNL 996 FWL of 1/4 SEC
Depth of Deviation: 12334 Radius of Turn: 1192 Direction: 2 Total Length: 4312
Measured Total Depth: 17838 True Vertical Depth: 13107 End Pt. Location From Release, Unit or Property Line: 86

FOR COMMISSION USE ONLY
Status: Accepted
1134014

RECEIVED

JUL 22 2016

Form 1002A
Rev. 2009

OKLAHOMA CORPORATION
COMMISSION

API NO. 35-043-23457
OTC PROD. UNIT NO. 43217531

PLEASE TYPE OR USE BLACK INK ONLY
NOTE:

Attach copy of original 1002A
if recompletion or reentry.

OKLAHOMA CORPORATION COMMISSION
Oil & Gas Conservation Division
Post Office Box 52000
Oklahoma City, Oklahoma 73152-2000
Rule 165-10-3-25

☒ ORIGINAL
☐ AMENDED (Reason)

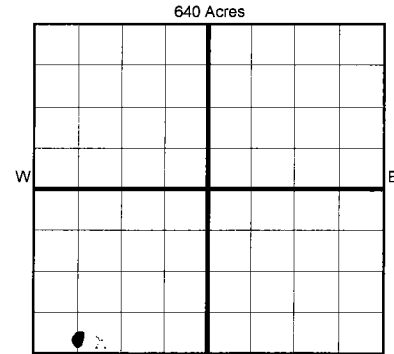
COMPLETION REPORT

TYPE OF DRILLING OPERATION

☐ STRAIGHT HOLE ☐ DIRECTIONAL HOLE ☒ HORIZONTAL HOLE
☐ SERVICE WELL

If directional or horizontal, see reverse for bottom hole location.

COUNTY	DEWEY	SEC	27	TWP	19N	RGE	20W
LEASE NAME	SALISBURY 27-19-20			WELL NO.	1H		
S2 1/4 S2 1/4 SW 1/4 SW 1/4	FSL OF 1/4 SEC	200'	FWL OF 1/4 SEC	660'			
ELEVATION N Derrick	Ground	Latitude (if known)	36.0872112		Longitude (if known)	99.325921497	
OPERATOR NAME	Tapstone Energy, LLC			OTC/OCC OPERATOR NO.	23467		
ADDRESS	PO Box 1608						
CITY	Oklahoma City	STATE	OK	ZIP	73101-1608		



LOCATE WELL

COMPLETION TYPE

<input checked="" type="checkbox"/> SINGLE ZONE	← X
<input type="checkbox"/> MULTIPLE ZONE	
Application Date	
COMINGLED	
Application Date	
LOCATION	653225 (Interim)
EXCEPTION ORDER	
INCREASED DENSITY	
ORDER NO.	

CASING & CEMENT (Form 1002C must be attached)

TYPE	SIZE	WEIGHT	GRADE	FEET	PSI	SAX	TOP OF CMT
CONDUCTOR							
SURFACE	9 5/8"	36	J-55	1,468'	1000	692	SURFACE
INTERMEDIATE	7"	26	P-110	12,165'	3842	380	6500'
PRODUCTION							
LINER	4 1/2"	13.5	P-110	11,901'-17,835'	9000	540	11,901'
				TOTAL DEPTH	17,838'		

PACKER @ 12,990 BRAND & TYPE HAL PLT PLUG @ TYPE PLUG @ TYPE
PACKER @ BRAND & TYPE PLUG @ TYPE PLUG @ TYPE

COMPLETION & TEST DATA BY PRODUCING FORMATION

FORMATION	MISSISSIPPIAN	359MSSP
SPACING & SPACING ORDER NUMBER	640 Acre - 652198	
CLASS: Oil, Gas, Dry, Inj, Disp, Comm Disp, Svc	GAS	
PERFORATED INTERVALS	13,190' - 17,725'	
ACID/VOLUME	32,466 gal 15% HCL	
FRACTURE TREATMENT (Fluids/Prop Amounts)	191,490 bbl 5,638,554# Proppant	

AS SUBMITTED

Reported
to Free Focus

Min Gas Allowable (165:10-17-7)

Gas Purchaser/Measurer
First Sales Date

Enable
7/12/2016

INITIAL TEST DATA

Oil Allowable (165:10-13-3)

INITIAL TEST DATE	7/20/2016
OIL-BBL/DAY	78
OIL-GRAVITY (API)	
GAS-MCF/DAY	2584
GAS-OIL RATIO CU FT/BBL	33,128
WATER-BBL/DAY	3562
PUMPING OR FLOWING	Flowing
INITIAL SHUT-IN PRESSURE	
CHOKE SIZE	40/64
FLOW TUBING PRESSURE	1320

A record of the formations drilled through, and pertinent remarks are presented on the reverse. I declare that I have knowledge of the contents of this report and am authorized by my organization to make this report, which was prepared by me or under my supervision and direction, with the data and facts stated herein to be true, correct, and complete to the best of my knowledge and belief.

SIGNATURE: *Bryan Rother* NAME (PRINT OR TYPE): Bryan Rother
PO Box 1608 ADDRESS: Oklahoma City CITY: OK STATE: 73101-1608 ZIP: 405-702-1600 PHONE NUMBER: brother@tapstoneenergy.com EMAIL ADDRESS:

PLEASE TYPE OR USE BLACK INK ONLY
FORMATION RECORD

Give formation names and tops, if available, or descriptions and thickness of formations drilled through. Show intervals cored or drillstem tested.

LEASE NAME SALISBURY 27-19-20 WELL NO. 1H

NAMES OF FORMATIONS	TOP
BASE HEEBNER	6850'
TONKAWA	7302'
COTTAGE GROVE	7780'
HOGSHOOTER	8090'
OSWEGO LIMESTONE	8602'
ATOKA	9438'
MISSISSIPPIAN	10460'

FOR COMMISSION USE ONLY	
ITD on file <input type="checkbox"/> YES <input type="checkbox"/> NO	
APPROVED _____	DISAPPROVED _____
2) Reject Codes	

Were open hole logs run?	<u>X</u> yes <u> </u> no
Date Last log was run	<u>6/7/2016</u>
Was CO ₂ encountered?	<u> </u> yes <u>X</u> no at what depths? _____
Was H ₂ S encountered?	<u>X</u> yes <u> </u> no at what depths? <u>13,107'</u>
Were unusual drilling circumstances encountered?	<u> </u> yes <u>X</u> no
If yes, briefly explain below	

Other remarks:

640 Acres

X							

If more than three drainholes are proposed, attach a separate sheet indicating the necessary information.

Direction must be stated in degrees azimuth.
Please note, the horizontal drainhole and its end point must be located within the boundaries of the lease or spacing unit.

Directional surveys are required for all drainholes and directional wells.

640 Acres

BOTTOM HOLE LOCATION FOR DIRECTIONAL HOLE

SEC	TWP	RGE	COUNTY
Spot Location	1/4	1/4	1/4
Measured Total Depth	True Vertical Depth		BHL From Lease, Unit, or Property Line:

BOTTOM HOLE LOCATION FOR HORIZONTAL HOLE: (LATERALS)

SEC	TWP	RGE	COUNTY
27	19N	20W	DEWEY
Spot Location	NE 1/4	NW 1/4	NW 1/4
Depth of Deviation	12,334'	Radius of Turn	1,192'
Measured Total Depth	17,838'	True Vertical Depth	13,107'
Feet From 1/4 Sec Lines		FNL	FWL
		86'	996'
Direction		Total Length	
2		4,312'	
BHL From Lease, Unit, or Property Line:		86'	

LATERAL #2

SEC	TWP	RGE	COUNTY
Spot Location	1/4	1/4	1/4
Depth of Deviation	Radius of Turn		Direction
Measured Total Depth	True Vertical Depth		Total Length
BHL From Lease, Unit, or Property Line:			

LATERAL #3

SEC	TWP	RGE	COUNTY
Spot Location	1/4	1/4	1/4
Depth of Deviation	Radius of Turn		Direction
Measured Total Depth	True Vertical Depth		Total Length
BHL From Lease, Unit, or Property Line:			

TOPOGRAPHIC LAND SURVEYORS OF OKLAHOMA

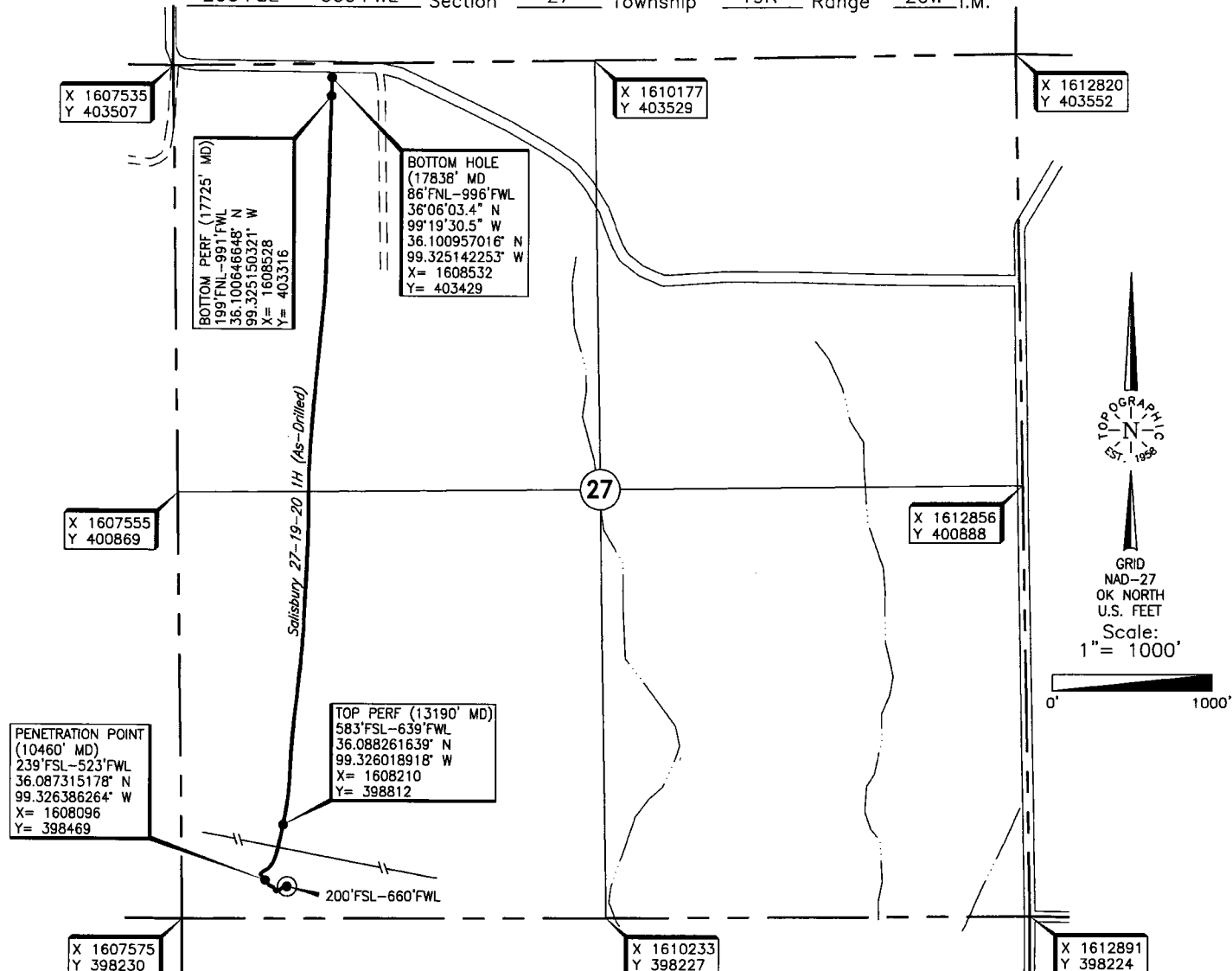
6709 NORTH CLASSEN BLVD., OKLA. CITY, OKLA. 73116 * LOCAL (405) 843-4847 * OUT OF STATE (800) 654-3219

Certificate of Authorization No. 1293 LS

DEWEY

County, Oklahoma

200'FSL - 660'FWL Section 27 Township 19N Range 20W I.M.



Operator: TAPSTONE ENERGY

Lease Name: SALISBURY 27-19-20

Well No.: 1H

ELEVATION:

2157' Gr. at Stake

Topography & Vegetation Location fell in level to slope pasture, ±228' South of NW-SE pipeline

Good Drill Site? Yes Reference Stakes or Alternate Location
Stakes Set None

Best Accessibility to Location From North off county road.

Distance & Direction

from Hwy Jct or Town From Vici, Ok., go ±1.5 mile West, then ±3.0 miles South continuing South through Section 27, 1 mile to the SW corner of Section 27, T19N - R20W.

This information was gathered with a GPS receiver with ±1 foot Horiz./Vert. accuracy.

DATUM: NAD-27
LAT: 36°05'14.0"N
LONG: 99°19'33.3"W
LAT: 36.087211237°N
LONG: 99.325921497°W
STATE PLANE
COORDINATES: (US Feet)
ZONE: OK NORTH
X: 1608233
Y: 398429

262342 Date of Drawing: July 01, 2016
Invoice # 257296 Date Staked: March 10, 2016 JP

FINAL AS-DRILLED PLAT

AS-DRILLED INFORMATION
FURNISHED BY TAPSTONE ENERGY