

Oklahoma Corporation Commission
Oil & Gas Conservation Division
Post Office Box 52000
Oklahoma City, Oklahoma 73152-2000
Rule 165: 10-3-25

Form 1002A

API No.: 35095206530000

Completion Report

Spud Date: April 14, 2015

OTC Prod. Unit No.: 095-217259

Drilling Finished Date: October 04, 2015

1st Prod Date: June 17, 2016

Completion Date: June 17, 2016

Drill Type: HORIZONTAL HOLE

Well Name: DOROTHY 4-11H

Purchaser/Measurer:

Location: MARSHALL 11 5S 6E
NW NW NE NW
250 FNL 1440 FWL of 1/4 SEC
Derrick Elevation: 0 Ground Elevation: 731

First Sales Date:

Operator: XTO ENERGY INC 21003

210 W PARK AVE STE 2350
OKLAHOMA CITY, OK 73102-5683

Completion Type	
X	Single Zone
	Multiple Zone
	Commingled

Location Exception
Order No
652129

Increased Density
Order No
640273

Casing and Cement							
Type	Size	Weight	Grade	Feet	PSI	SAX	Top of CMT
CONDUCTOR	20	94	J-55	110			SURFACE
SURFACE	9 5/8	36	J-55	1024		510	SURFACE
PRODUCTION	5 1/2	20, 23	P-110	11572		1455	3207

Liner								
Type	Size	Weight	Grade	Length	PSI	SAX	Top Depth	Bottom Depth
There are no Liner records to display.								

Total Depth: 11580

Packer	
Depth	Brand & Type
6127	BAKER R

Plug	
Depth	Plug Type
There are no Plug records to display.	

Initial Test Data										
Test Date	Formation	Oil BBL/Day	Oil-Gravity (API)	Gas MCF/Day	Gas-Oil Ratio Cu FT/BBL	Water BBL/Day	Pumpin or Flowing	Initial Shut-In Pressure	Choke Size	Flow Tubing Pressure
Jun 28, 2016	WOODFORD	144	39	86	597	737	FLOWING	500	OPEN	160

Completion and Test Data by Producing Formation									
Formation Name: WOODFORD				Code: 319WDFD			Class: OIL		
Spacing Orders				Perforated Intervals					
Order No		Unit Size		From			To		
562312		640		6466			11433		
Acid Volumes				Fracture Treatments					
32,000 GALLONS				16 STAGES - 198,773 BTW, 646,265 POUNDS 100 MESH, 4,519,949 POUNDS 40/70					

Formation	Top
WOODFORD	6117

Were open hole logs run? No

Date last log run:

Were unusual drilling circumstances encountered? No

Explanation:

Other Remarks
IRREGULAR SECTION

Lateral Holes
Sec: 11 TWP: 5S RGE: 6E County: MARSHALL SW SW SW SE 66 FSL 2523 FEL of 1/4 SEC Depth of Deviation: 5831 Radius of Turn: 1680 Direction: 165 Total Length: 5130 Measured Total Depth: 11580 True Vertical Depth: 5617 End Pt. Location From Release, Unit or Property Line: 66

FOR COMMISSION USE ONLY
<div>Status: Accepted</div> <div>1133964</div>

RECEIVED

JUL 13 2016

Form 1002A
Rev. 2009

API NO. **095-20653**
OTC PROD UNIT NO. **095-217259**

PLEASE TYPE OR USE BLACK INK ONLY
NOTE:

Attach copy of original 1002A
if recompletion or reentry.

OKLAHOMA CORPORATION COMMISSION
Oil & Gas Conservation Division
Post Office Box 52000
Oklahoma City, Oklahoma 73152-2000
Rule 165.10-3-25

OKLAHOMA CORPORATION
COMMISSION

☒ ORIGINAL
☐ AMENDED (Reason) _____

COMPLETION REPORT

TYPE OF DRILLING OPERATION

☐ STRAIGHT HOLE ☐ DIRECTIONAL HOLE ☒ HORIZONTAL HOLE

If directional or horizontal, see reverse for bottom hole location.

COUNTY	Marshall	SEC	11	TWP	5S	RGE	6E
LEASE NAME	Dorothy			WELL NO.	4-11H		
NW 1/4 NW 1/4 NE 1/4 NW 1/4	FNL OF 1/4 SEC		250'	FWL OF 1/4 SEC	1440'		
ELEVATION Derrick FL	Ground	731'	Latitude (if known)	34.142785°N		Longitude (if known)	96.648865°W
OPERATOR NAME	XTO Energy Inc.			OTC/OCC OPERATOR NO.	21003		
ADDRESS	210 Park Avenue, Suite 2350						
CITY	Oklahoma City	STATE	Oklahoma	ZIP	73102		

640 Acres

LOCATE WELL									
-------------	--	--	--	--	--	--	--	--	--

COMPLETION TYPE

<input checked="" type="checkbox"/> SINGLE ZONE	
<input type="checkbox"/> MULTIPLE ZONE	
Application Date	
<input type="checkbox"/> COMMINGLED	
Application Date	
LOCATION EXCEPTION	652129 F.O.
ORDER NO.	
INCREASED DENSITY	640273
ORDER NO.	

CASING & CEMENT (Form 1002C must be attached)

TYPE	SIZE	WEIGHT	GRADE	FEET	PSI	SAX	TOP OF CMT
CONDUCTOR	20"	94	J-55	110			Surface
SURFACE	9 5/8"	36	J-55	1024		510	Surface
INTERMEDIATE							
PRODUCTION	5 1/2"	20,23	P-110	11,572		1455	3207
LINER							
				TOTAL DEPTH	11,580'		

PACKER @ 6,127 BRAND & TYPE Baker R PLUG @ _____ TYPE _____ PLUG @ _____ TYPE _____
PACKER @ _____ BRAND & TYPE _____ PLUG @ _____ TYPE _____ PLUG @ _____ TYPE _____

COMPLETION & TEST DATA BY PRODUCING FORMATION

FORMATION	Woodford						
SPACING & SPACING ORDER NUMBER	640: 562312						
CLASS: Oil, Gas, Dry, Inj. Disp. Comm Disp, Svc	Oil						
PERFORATED INTERVALS	16 Stages						
	6466-11,433'						
ACID/VOLUME	32,000 gals						
	198,773 BTW						
FRACTURE TREATMENT (Fluids/Prop Amounts)	646,265# 100 Mesh						
	4,519,949# 40/70						

AS SUBMITTED

Reported to FracFarms

Min Gas Allowable (165:10-17-7)

Gas Purchaser/Measurer

OR
Oil Allowable (165:10-13-3)

First Sales Date

INITIAL TEST DATA

INITIAL TEST DATE	6/28/2016				
OIL-BBL/DAY	144				
OIL-GRAVITY (API)	39				
GAS-MCF/DAY	86				
GAS-OIL RATIO CU FT/BBL	597				
WATER-BBL/DAY	737				
PUMPING OR FLOWING	Flowing				
INITIAL SHUT-IN PRESSURE	500				
CHOKE SIZE	Open				
FLOW TUBING PRESSURE	160				

A record of the formations drilled through, and pertinent remarks are presented on the reverse. I declare that I have knowledge of the contents of this report and am authorized by my organization to make this report, which was prepared by me or under my supervision and direction, with the data and facts stated herein to be true, correct, and complete to the best of my knowledge and belief.

SIGNATURE	Debbie Waggoner	DATE	7/8/2016	PHONE NUMBER	405-319-3243
ADDRESS	210 Park Avenue, Suite 2350	CITY	Oklahoma City	STATE	Ok
		ZIP	73102	EMAIL ADDRESS	debbie_waggoner@xtoenergy.com

Give formation names and tops, if available, or descriptions and thickness of formations drilled through. Show intervals cored or drillstem tested.

FOR COMMISSION USE ONLY		
ITD on file	<input type="checkbox"/> YES	<input type="checkbox"/> NO
APPROVED _____	DISAPPROVED _____	
		2) Reject Codes _____ _____ _____ _____ _____

Were open hole logs run? yes X no

Date Last log was run _____

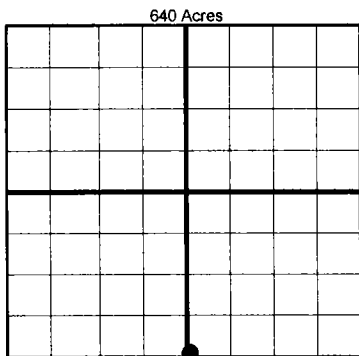
Was CO₂ encountered? yes X no at what depths? _____

Was H₂S encountered? yes X no at what depths? _____

Were unusual drilling circumstances encountered? _____ yes X no

If yes, briefly explain below: _____

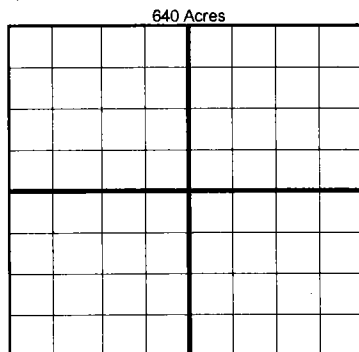
Other remarks:	<u>Irregular Section</u>



If more than three drainholes are proposed, attach a separate sheet indicating the necessary information.

Direction must be stated in degrees azimuth.
Please note, the horizontal drainhole and its end
point must be located within the boundaries of the
lease or spacing unit.

Directional surveys are required for all drainholes and directional wells.



SEC	TWP	RGE	COUNTY
Spot Location			
1/4	1/4	1/4	1/4
Measured Total Depth	True Vertical Depth	BHL From Lease, Unit, or Property Line:	

LATERAL #1										
SEC 11	TWP	5S	RGE	6E	COUNTY	Marshall				
Spot Location		SW 1/4 SW 1/4 SE 1/4			Feet From 1/4 Sec Lines		FSL	66'	FEL	2523'
Depth of Deviation		5,831		Radius of Turn		1680		Direction		165°
Measured Total Depth		11,580'		True Vertical Depth		5617'		BHL From Lease, Unit, or Property Line:		
								66' FSL & 2523' FEL		

LATERAL #2						
SEC	TWP	RGE	COUNTY			
Spot Location				Feet From 1/4 Sec Lines	FSL	FWL
1/4	1/4	1/4	1/4			
Depth of Deviation		Radius of Turn	Direction	Total Length		
Measured Total Depth		True Vertical Depth	BHL From Lease, Unit, or Property Line:			

LATERAL #3								
SEC	TWP	RGE	COUNTY					
Spot Location			1/4	1/4	1/4	Feet From 1/4 Sec Lines	FSL	FWL
Depth of Deviation		Radius of Turn		Direction		Total Length		
Measured Total Depth		True Vertical Depth		BHL From Lease, Unit, or Property Line:				