

Oklahoma Corporation Commission
Oil & Gas Conservation Division
Post Office Box 52000
Oklahoma City, Oklahoma 73152-2000
Rule 165: 10-3-25

Form 1002A

API No.: 35011235490001

Completion Report

Spud Date: November 03, 2015

OTC Prod. Unit No.: 011-217244-0-0000

Drilling Finished Date: February 19, 2016

1st Prod Date: February 24, 2016

Completion Date: February 23, 2016

Drill Type: HORIZONTAL HOLE

Min Gas Allowable: Yes

Well Name: KC 1H-36

Purchaser/Measurer: NEWFIELD

Location: BLAINE 36 20N 11W
SE SW SW SW
220 FSL 390 FWL of 1/4 SEC
Derrick Elevation: 1233 Ground Elevation: 1205

First Sales Date: 02/24/2016

Operator: NEWFIELD EXPLORATION MID-CON INC 20944

1 WILLIAMS CTR STE 1900
TULSA, OK 74172-0162

Completion Type		Location Exception		Increased Density	
X	Single Zone	Order No		Order No	
	Multiple Zone	647993		There are no Increased Density records to display.	
	Commingled	653865			

Casing and Cement							
Type	Size	Weight	Grade	Feet	PSI	SAX	Top of CMT
SURFACE	13 3/8	54.5	J-55	1500	500	760	SURFACE
PRODUCTION	5 1/2	20	P-110	13351	5000	1575	1500
CONDUCTOR	20	94	J-55	88		14	SURFACE

Liner								
Type	Size	Weight	Grade	Length	PSI	SAX	Top Depth	Bottom Depth
There are no Liner records to display.								

Total Depth: 13365

Packer	
Depth	Brand & Type
8158	HALLIBURTON 5 1/2"

Plug	
Depth	Plug Type
There are no Plug records to display.	

Initial Test Data										
Test Date	Formation	Oil BBL/Day	Oil-Gravity (API)	Gas MCF/Day	Gas-Oil Ratio Cu FT/BBL	Water BBL/Day	Pumpin or Flowing	Initial Shut-In Pressure	Choke Size	Flow Tubing Pressure
Mar 14, 2016	MISSISSIPPIAN	165		876	5309	2653	PUMPING		64	195

Completion and Test Data by Producing Formation									
Formation Name: MISSISSIPPIAN				Code: 359MSSP			Class: OIL		
Spacing Orders				Perforated Intervals					
Order No		Unit Size		From		To			
646352		640		8506		13209			
Acid Volumes				Fracture Treatments					
25,509 GALS ACID				139,867 BBLS WATER					
				7,172,690 LBS 40/70					

Formation	Top
MISSISSIPPIAN	8509
CHESTER	7384
ATOKA	7330

Were open hole logs run? Yes

Date last log run: January 06, 2016

Were unusual drilling circumstances encountered? No

Explanation:

Other Remarks
IRREGULAR SECTION.

Lateral Holes
Sec: 36 TWP: 20N RGE: 11W County: MAJOR
NE NW NW NW
50 FNL 413 FWL of 1/4 SEC
Depth of Deviation: 8006 Radius of Turn: 322 Direction: 356 Total Length: 4803
Measured Total Depth: 13365 True Vertical Depth: 8274 End Pt. Location From Release, Unit or Property Line: 50

FOR COMMISSION USE ONLY
Status: Accepted
1133009

Well Location Plat
M & M Land Surveying, Inc.

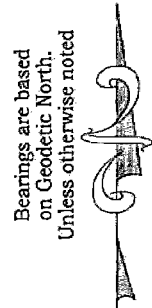
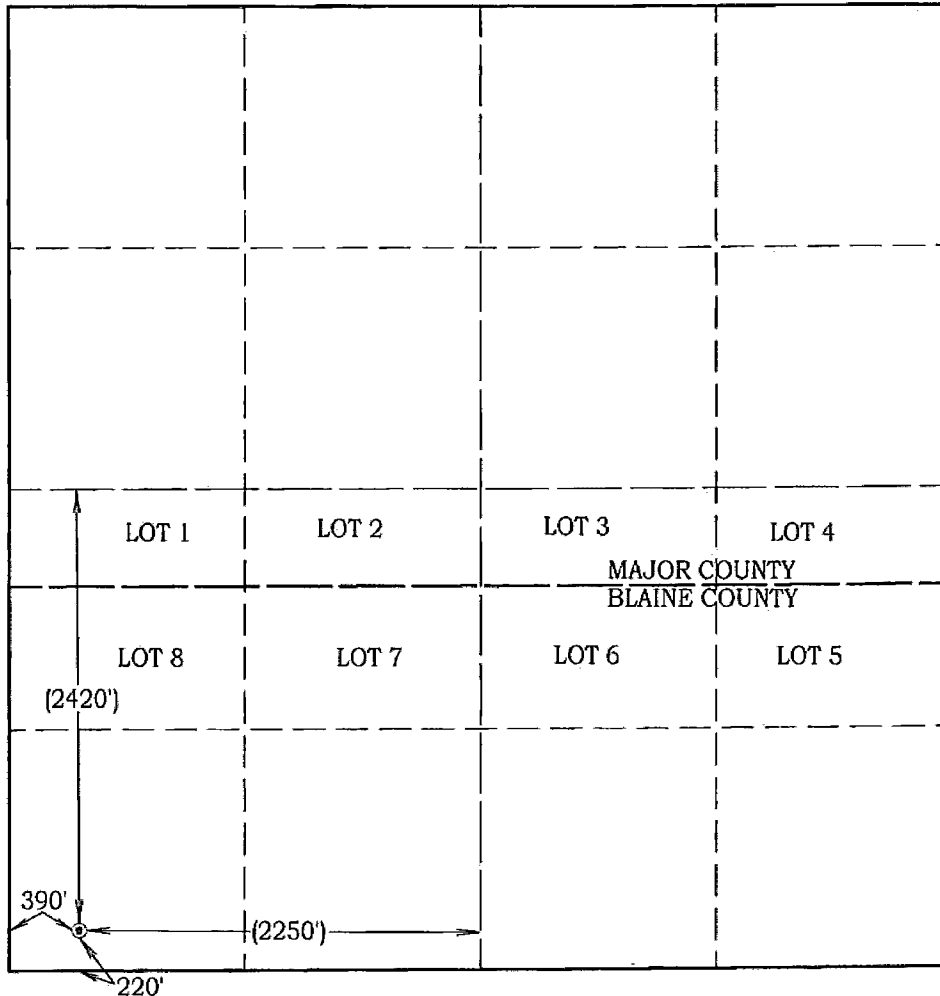
520 "E" Street NW. Ardmore, OK. 73401
Office 580-226-0446 Mobile 580-221-4999 Fax 580-226-7158

Company Name: Newfield Exploration Mid-Continent, Inc. Lease Name: KC #1H-36
Section 36 Township 20 North Range 11 West County Blaine/Major Oklahoma

Surface Location 220' FSL - 390' FWL Elevation 1205' Good Location? Yes

Topography

Location fell in pasture
between drains.



Scale: 1" = 1000'

Invoice #15360

Date 8/31/15

Elevations of Proposed
Pad Corners

NW/C - N/A

NE/C - N/A

SE/C - N/A

SW/C - N/A

Coordinates were derived
from GPS RTK methods
and are only accurate
within ±10 feet

Location GPS NAD 27

Oklahoma North

Surface Location

Latitude: 36.15987°

Longitude: 98.33343°

Y = 422,370'

X = 1,901,571'

Location NAD 83

Surface Location

Latitude: 36.15990°

Longitude: 98.33378°

Y = 422,394'

X = 1,869,969'

Best Accessibility to Location
From the South

Distance & Direction From From the Jct. of S.H. #51 and S.H. #8, go 3 miles North on SH. #8, then 1 mile West on county road to the Southwest corner of 36.
Highway or Town _____

CERTIFICATE:

I, D. Harry McClintick, a Registered Land Surveyor in the state of Oklahoma, do hereby certify that the above described Well Location was surveyed and staked on the ground as shown.

D. Harry McClintick
D. Harry McClintick, R.P.L.S. # 1367, CA # 3093

This location has been staked according to the best official survey records available to us, but its accuracy is not guaranteed. Please review this plat and notify us immediately of any discrepancy.

The distances shown in parenthesis () are calculated distances based on the quarter section being 2640' and have not been measured.

