

Oklahoma Corporation Commission
Oil & Gas Conservation Division
Post Office Box 52000
Oklahoma City, Oklahoma 73152-2000
Rule 165: 10-3-25

Form 1002A

API No.: 35073252290001

Completion Report

Spud Date: February 20, 2016

OTC Prod. Unit No.: 073-217351

Drilling Finished Date: March 08, 2016

1st Prod Date: April 06, 2016

Completion Date: April 04, 2016

Drill Type: HORIZONTAL HOLE

Min Gas Allowable: Yes

Well Name: HELEN 1H-30X

Purchaser/Measurer: NWEFIELD

Location: KINGFISHER 31 17N 8W
SW SE SW SW
265 FSL 715 FWL of 1/4 SEC
Latitude: 35.8993 Longitude: -98.10081
Derrick Elevation: 1237 Ground Elevation: 1213

First Sales Date: 04/06/2016

Operator: NEWFIELD EXPLORATION MID-CON INC 20944

1 WILLIAMS CTR STE 1900
TULSA, OK 74172-0162

Completion Type	
X	Single Zone
	Multiple Zone
	Commingled

Location Exception
Order No
647914

Increased Density
Order No
There are no Increased Density records to display.

Casing and Cement							
Type	Size	Weight	Grade	Feet	PSI	SAX	Top of CMT
SURFACE	9 5/8	40	J-55	1518		400	SURFACE
PRODUCTION	5 1/2	20	P-110	18948	1500	2410	18850

Liner								
Type	Size	Weight	Grade	Length	PSI	SAX	Top Depth	Bottom Depth
There are no Liner records to display.								

Total Depth: 18961

Packer	
Depth	Brand & Type
There are no Packer records to display.	

Plug	
Depth	Plug Type
There are no Plug records to display.	

Initial Test Data										
Test Date	Formation	Oil BBL/Day	Oil-Gravity (API)	Gas MCF/Day	Gas-Oil Ratio Cu FT/BBL	Water BBL/Day	Pumpin or Flowing	Initial Shut-In Pressure	Choke Size	Flow Tubing Pressure
May 20, 2016	MISSISSIPPIAN	990	43	1416	1430	136	FLOWING		27	500

Completion and Test Data by Producing Formation																
Formation Name: MISSISSIPPIAN	Code: 359MSSP	Class: OIL														
<table border="1"> <thead> <tr> <th colspan="2">Spacing Orders</th> </tr> <tr> <th>Order No</th> <th>Unit Size</th> </tr> </thead> <tbody> <tr> <td>646834</td> <td>640</td> </tr> <tr> <td>647457</td> <td>MULTIUNIT</td> </tr> </tbody> </table>		Spacing Orders		Order No	Unit Size	646834	640	647457	MULTIUNIT	<table border="1"> <thead> <tr> <th colspan="2">Perforated Intervals</th> </tr> <tr> <th>From</th> <th>To</th> </tr> </thead> <tbody> <tr> <td>8817</td> <td>18805</td> </tr> </tbody> </table>	Perforated Intervals		From	To	8817	18805
Spacing Orders																
Order No	Unit Size															
646834	640															
647457	MULTIUNIT															
Perforated Intervals																
From	To															
8817	18805															
<table border="1"> <thead> <tr> <th>Acid Volumes</th> </tr> </thead> <tbody> <tr> <td>18,853 GALLONS 15% HCL</td> </tr> </tbody> </table>		Acid Volumes	18,853 GALLONS 15% HCL	<table border="1"> <thead> <tr> <th>Fracture Treatments</th> </tr> </thead> <tbody> <tr> <td>7,624,520 # PROPPANT 242,593 BLWTR</td> </tr> </tbody> </table>	Fracture Treatments	7,624,520 # PROPPANT 242,593 BLWTR										
Acid Volumes																
18,853 GALLONS 15% HCL																
Fracture Treatments																
7,624,520 # PROPPANT 242,593 BLWTR																

Formation	Top
MISSISSIPPIAN	8606
CHESTER	8040
ATOKA	7952

Were open hole logs run? No

Date last log run:

Were unusual drilling circumstances encountered? No

Explanation:

Other Remarks
OCC: FLE ORDER HAS NOT BEEN ISSUED. WE HAVE ACCEPTED OPERATORS DATA AS SUBMITTED. IRREGULAR SECTION.

Lateral Holes
Sec: 30 TWP: 17N RGE: 8W County: KINGFISHER NE NW NW NW 52 FNL 387 FWL of 1/4 SEC Depth of Deviation: 4808 Radius of Turn: 9157 Direction: 360 Total Length: 9988 Measured Total Depth: 18961 True Vertical Depth: 8618 End Pt. Location From Release, Unit or Property Line: 52

FOR COMMISSION USE ONLY
Status: Accepted
1133684

Well Location Plat

API 073-25229 A

M & M Land Surveying, Inc.

520 "E" Street NW. Ardmore, OK. 73401
 Office 580-226-0446 Mobile 580-221-4999 Fax 580-226-7158

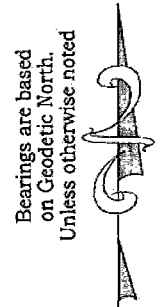
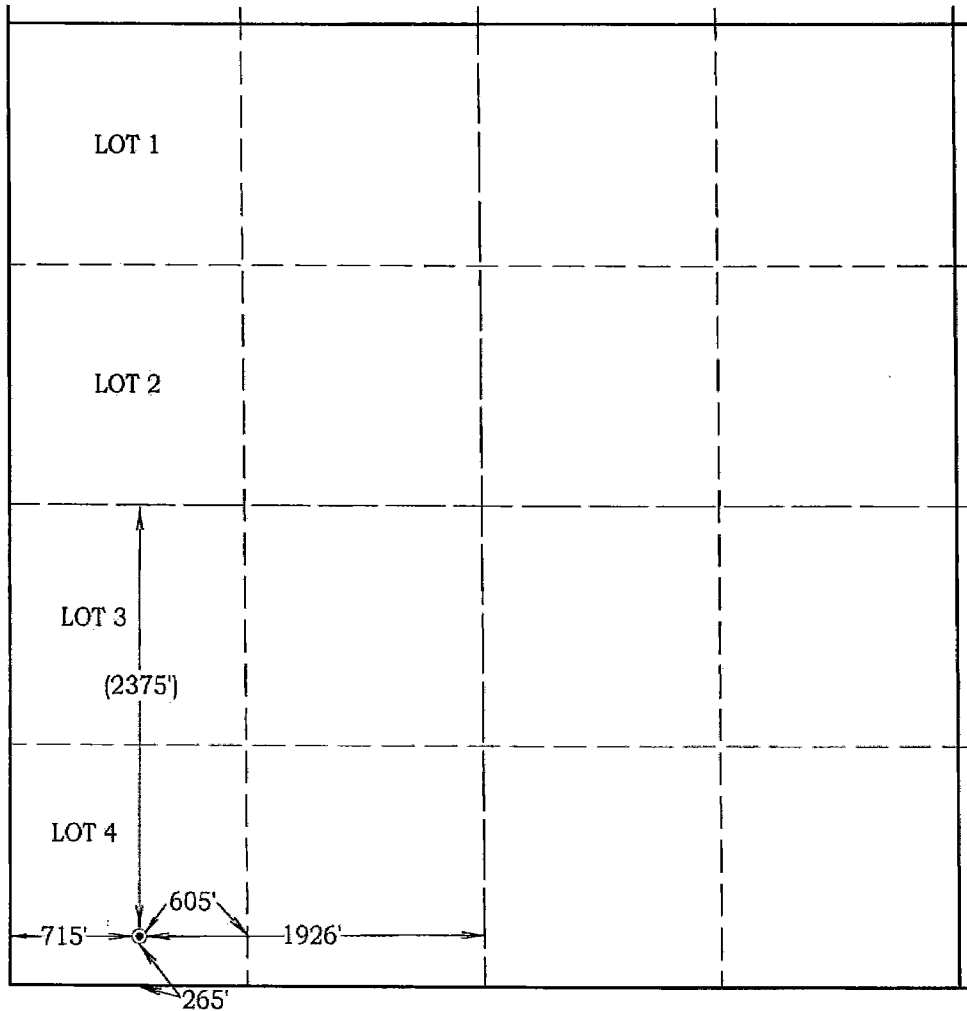
Company Name: Newfield Exploration Mid-Continent, Inc. Lease Name: Helen #1H-30X

Section 31 Township 17 North Range 8 West County Kingfisher Oklahoma

Surface Location 265' FSL - 715' FWL Elevation 1213' Good Location? Yes

Topography

Location fell in wheat, 287'
Southwest, 243' South,
184' North of Pipelines &
94' West of fence.



Scale: 1" = 1000'
 Invoice #15501
 Date 12/22/2015
 Elevations of Proposed Pad Corners
 NW/C - N/A
 NE/C - N/A
 SE/C - N/A
 SW/C - N/A

Coordinates were derived from GPS RTK methods and are only accurate within ±10 feet

Location GPS NAD 27
 Oklahoma North
 Surface Location
 Latitude: 35.89926°
 Longitude: 98.10047°
 Y= 327,351'
 X = 1,970,242'

Location NAD 83
 Surface Location
 Latitude: 35.89930°
 Longitude: 98.10081°
 Y= 327,375'
 X = 1,938,643'

Best Accessibility to Location
From the South

Distance & Direction From From the Jct. of U.S. #81 and S.H. #33, go 9.5 miles West on S.H. #33, then 3 miles North, then .1 miles West on county roads to the Southwest corner of section 31.
 Highway or Town _____

CERTIFICATE:

I, D. Harry McClintick, a Registered Land Surveyor in the state of Oklahoma, do hereby certify that the above described Well Location was surveyed and staked on the ground as shown.

D. Harry McClintick 12/22/15
 D. Harry McClintick, R.P.L.S. # 1367, CA # 3093

This location has been staked according to the best official survey records available to us, but its accuracy is not guaranteed. Please review this plat and notify us immediately of any discrepancy.

The distances shown in parenthesis () are calculated distances based on the quarter section being 2640' and have not been measured.

