

Oklahoma Corporation Commission  
Oil & Gas Conservation Division  
Post Office Box 52000  
Oklahoma City, Oklahoma 73152-2000  
Rule 165: 10-3-25

Form 1002A

API No.: 35049250630000

**Completion Report**

Spud Date: December 01, 2015

OTC Prod. Unit No.: 049-217420

Drilling Finished Date: December 29, 2015

1st Prod Date: April 29, 2016

Completion Date: April 29, 2016

**Drill Type: HORIZONTAL HOLE**

Min Gas Allowable: Yes

Well Name: PARKS 6H-31X

Purchaser/Measurer: NEWFIELD

Location: GARVIN 30 3N 3W  
NW SW SE SE  
432 FSL 1222 FEL of 1/4 SEC  
Latitude: 34.69682 Longitude: -97.54954  
Derrick Elevation: 1191 Ground Elevation: 1161

First Sales Date: 04/29/2016

Operator: NEWFIELD EXPLORATION MID-CON INC 20944

1 WILLIAMS CTR STE 1900  
TULSA, OK 74172-0162

Completion Type	
X	Single Zone
	Multiple Zone
	Commingled

Location Exception
Order No
There are no Location Exception records to display.

Increased Density
Order No
There are no Increased Density records to display.

Casing and Cement							
Type	Size	Weight	Grade	Feet	PSI	SAX	Top of CMT
CONDUCTOR	20	94	J-55	114		27	SURFACE
SURFACE	9 5/8	40	K-55	1522	500	395	SURFACE
PRODUCTION	5 1/2	23	P-110	21215	500	3155	21228

Liner								
Type	Size	Weight	Grade	Length	PSI	SAX	Top Depth	Bottom Depth
There are no Liner records to display.								

**Total Depth: 21215**

Packer	
Depth	Brand & Type
There are no Packer records to display.	

Plug	
Depth	Plug Type
There are no Plug records to display.	

Initial Test Data										
Test Date	Formation	Oil BBL/Day	Oil-Gravity (API)	Gas MCF/Day	Gas-Oil Ratio Cu FT/BBL	Water BBL/Day	Pumpin or Flowing	Initial Shut-In Pressure	Choke Size	Flow Tubing Pressure
May 07, 2016	WOODFORD	1069	40	1760	1646	2324	FLOWING	1900	48	433

Completion and Test Data by Producing Formation										
Formation Name: WOODFORD			Code: 319WDFD			Class: OIL				
<b>Spacing Orders</b>				<b>Perforated Intervals</b>						
<b>Order No</b>	<b>Unit Size</b>			<b>From</b>			<b>To</b>			
648978	UNIT			12250			21118			
<b>Acid Volumes</b>				<b>Fracture Treatments</b>						
33,700 GALS 15% HCL				9,706,652 # PROPPANT, 185,622 BLWTR						

Formation	Top
CANEY	11612
SYCAMORE	11768
WOODFORD	11970

Were open hole logs run? No

Date last log run:

Were unusual drilling circumstances encountered? No

Explanation:

Other Remarks
IRREGULAR SECTION.

Lateral Holes
Sec: 6 TWP: 2N RGE: 3W County: GARVIN
SW SE NE SE
1498 FSL 517 FEL of 1/4 SEC
Depth of Deviation: 11565 Radius of Turn: 859 Direction: 360 Total Length: 9095
Measured Total Depth: 21215 True Vertical Depth: 12255 End Pt. Location From Release, Unit or Property Line: 517

FOR COMMISSION USE ONLY
Status: Accepted
1133763

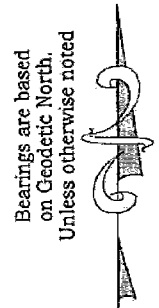
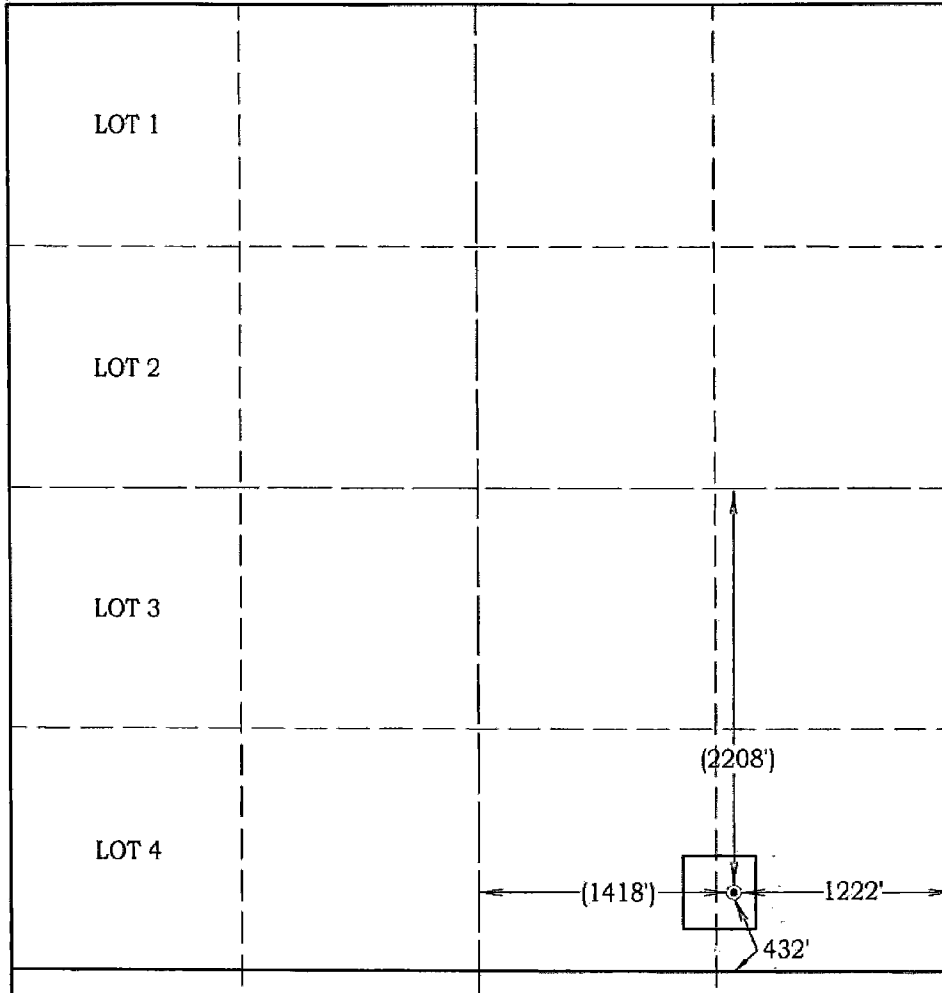
# Well Location Plat

## M & M Land Surveying, Inc.

520 "E" Street NW. Ardmore, OK. 73401  
 Office 580-226-0446 Mobile 580-221-4999 Fax 580-226-7158

Company Name: Newfield Exploration Mid-Continent, Inc. Lease Name: Parks #6H-31X  
 Section 30 Township 3 North Range 3 West County Garvin Oklahoma  
 Surface Location 432' FSL - 1222' FEL Elevation 1161' Good Location? Yes

Topography  
Location fell in scattered brush.  
 \_\_\_\_\_  
 \_\_\_\_\_  
 \_\_\_\_\_



Scale: 1" = 1000'  
 Invoice #15277  
 Date 7/14/15  
 Elevations of Proposed Pad Corners  
 NW/C - 1146'  
 NE/C - 1155'  
 SE/C - 1150'  
 SW/C - 1145'  
**Coordinates were derived from GPS RTK methods and are only accurate within ±10 feet**  
**Location GPS NAD 27 Oklahoma South**  
 Surface Location  
 Latitude: 34.69674°  
 Longitude: 97.54923°  
 Y= 496,463'  
 X = 2,135,496'  
**Location NAD 83**  
 Surface Location  
 Latitude: 34.69682°  
 Longitude: 97.54954°

Best Accessibility to Location From the North

Distance & Direction From From the intersection of SH. #76 North and the Stephens and Garvin County line, go .7 miles North on S.H. #76, then 4.1 miles East and North on a winding county Highway or Town road to the Northeast corner of section 30.

**CERTIFICATE:**

I, D. Harry McClintick, a Registered Land Surveyor in the state of Oklahoma, do hereby certify that the above described Well Location was surveyed and staked on the ground as shown.

*D. Harry McClintick*  
 D. Harry McClintick, R.P.L.S. # 1367, CA # 3093

This location has been staked according to the best official survey records available to us, but its accuracy is not guaranteed. Please review this plat and notify us immediately of any discrepancy.

The distances shown in parenthesis ( ) are calculated distances based on the quarter section being 2640' and have not been measured.

