

Oklahoma Corporation Commission
Oil & Gas Conservation Division
Post Office Box 52000
Oklahoma City, Oklahoma 73152-2000
Rule 165: 10-3-25

Form 1002A

API No.: 35011235670000

Completion Report

Spud Date: January 17, 2016

OTC Prod. Unit No.: 011-217543

Drilling Finished Date: January 31, 2016

1st Prod Date: May 25, 2016

Completion Date: May 19, 2016

Drill Type: HORIZONTAL HOLE

Min Gas Allowable: Yes

Well Name: STARK 1-16-10 1H

Purchaser/Measurer: CHESAPEAKE OPERATING LLC

Location: BLAINE 1 16N 10W
NW NE NE NE
245 FNL 430 FEL of 1/4 SEC
Derrick Elevation: 1248 Ground Elevation: 1223

First Sales Date: 05/25/2016

Operator: CHESAPEAKE OPERATING LLC 17441
PO BOX 18496
6100 N WESTERN AVE
OKLAHOMA CITY, OK 73154-0496

Completion Type	
X	Single Zone
	Multiple Zone
	Commingled

Location Exception	
Order No	
	653742
	653777

Increased Density	
Order No	
There are no Increased Density records to display.	

Casing and Cement							
Type	Size	Weight	Grade	Feet	PSI	SAX	Top of CMT
SURFACE	13 3/8	48	H-40	1525		1241	SURFACE
PRODUCTION	5 1/2	20	P-110HC	18819		2085	4127

Liner								
Type	Size	Weight	Grade	Length	PSI	SAX	Top Depth	Bottom Depth
There are no Liner records to display.								

Total Depth: 18819

Packer	
Depth	Brand & Type
9206	AS-IX

Plug	
Depth	Plug Type
18674	CIBP

Initial Test Data										
Test Date	Formation	Oil BBL/Day	Oil-Gravity (API)	Gas MCF/Day	Gas-Oil Ratio Cu FT/BBL	Water BBL/Day	Pumpin or Flowing	Initial Shut-In Pressure	Choke Size	Flow Tubing Pressure
Jun 12, 2016	MISSISSIPPIAN	1224		2564	2095	240	FLOWING	104	24/64	1625

Completion and Test Data by Producing Formation										
Formation Name: MISSISSIPPIAN			Code: 359MSSP			Class: OIL				
Spacing Orders				Perforated Intervals						
Order No	Unit Size			From	To					
645785	640			9344	18720					
653776	MULTIUNIT									
646146	640									
Acid Volumes				Fracture Treatments						
49,750 GALLONS HCL ACID				211,688 BARRELS FRAC FLUID, 15,829,940 POUNDS PROPPANT						

Formation	Top
MISSISSIPPIAN	9343

Were open hole logs run? No

Date last log run:

Were unusual drilling circumstances encountered? No

Explanation:

Other Remarks
INTERIM ORDER NUMBER 646425: EXCEPTION TO OAC 165:10-3-28 (SECTION 01 TOWNSHIP 16N RANGE 10W, BLAINE COUNTY) AND INTERIM ORDER NUMBER 646389: EXCEPTION TO OAC 165:10-3-28 (SECTION 12 TOWNSHIP 16N RANGE 10W, BLAINE COUNTY)

Lateral Holes

Sec: 12 TWP: 16N RGE: 10W County: BLAINE

SW SE SE SE

185 FSL 431 FEL of 1/4 SEC

Depth of Deviation: 8451 Radius of Turn: 950 Direction: 184 Total Length: 9476

Measured Total Depth: 18819 True Vertical Depth: 9401 End Pt. Location From Release, Unit or Property Line: 185

FOR COMMISSION USE ONLY

1133794

Status: Accepted

API NO. 35-011-23567
 OTC PROD.
 UNIT NO. 011-217543

PLEASE TYPE OR USE BLACK INK ONLY
 NOTE:
 Attach copy of original 1002A if recompletion or reentry.

OKLAHOMA CORPORATION COMMISSION

Oil & Gas Conservation Division
 Post Office Box 52000
 Oklahoma City, Oklahoma 73152-2000
 Rule 165-10-3-25

RECEIVED Form 1002A Rev. 2009

JUN 22 2016

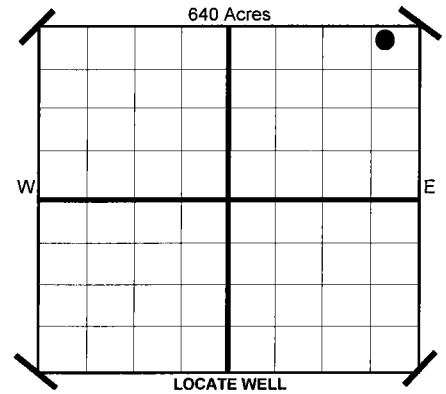
OKLAHOMA CORPORATION COMMISSION

COMPLETION REPORT

ORIGINAL
 AMENDED
 Reason Amended
 TYPE OF DRILLING OPERATION
 STRAIGHT HOLE DIRECTIONAL HOLE HORIZONTAL HOLE
 SERVICE WELL
 If directional or horizontal, see reverse for bottom hole location.

COUNTY **BLAINE** SEC **1** TWP **16N** RGE **10W**
 LEASE NAME **STARK 1-16-10** WELL NO. **1H**
 SHL **FNL** **FEL**
 NW 1/4 NE 1/4 NE 1/4 NE 1/4 **245** 1/4 SEC **430**
 ELEVATION
 Derrick Fl **1,248** Ground **1,223** Latitude (if Known)
 OPERATOR NAME **CHESAPEAKE OPERATING, L.L.C.** OTC/OCC OPERATOR NO. **17441**
 ADDRESS **P.O. BOX 18496**
 CITY **OKLAHOMA CITY** STATE **OK** ZIP **73154**

SPUD DATE **1/17/2016**
 DRLG FINISHED DATE **1/31/2016**
 DATE OF WELL COMPLETION **5/19/2016**
 1ST PROD DATE **5/25/2016**
 RECOMP DATE
 Longitude (if Known)
 OTC/OCC OPERATOR NO. **17441**



COMPLETION TYPE

SINGLE ZONE
 MULTIPLE ZONE
 Application Date
 COMMINGLED
 Application Date
 LOCATION **653742FD 653777FD**
 EXCEPTION ORDER NO. **646274 / 646424 (INTERIM)**
 INCREASED DENSITY ORDER NO. **N/A**

CASING & CEMENT (Form 1002C must be attached)

TYPE	SIZE	WEIGHT	GRADE	FEET	PSI	SAX	TOP	
CONDUCTOR								
SURFACE	13 3/8"	48#	H-40	1,525		1241	SURFACE	
INTERMEDIATE								
PRODUCTION	5 1/2"	20#	P-110HC	18,819		2,085	4,127	
LINER								
							TOTAL DEPTH	18,819

PACKER @ **9,206** BRAND & TYPE **AS-IX**
 PLUG @ _____ TYPE _____ PLUG @ _____ TYPE _____

PLUG @ _____ TYPE _____ PLUG @ **18,674** TYPE **CIPB**
 PLUG @ _____ TYPE _____ PLUG @ _____ TYPE _____

COMPLETION & TEST DATA BY PRODUCING FORMATION

FORMATION	MISSISSIPPIAN	MULTIUNIT → 653776FD	
SPACING & SPACING ORDER NUMBER	640 646146/645785	640 646145 (INTERIM)	
CLASS: Oil, Gas, Dry, Inj. Disp, Comm Disp, Svc	OIL		
PERFORATED INTERVALS	9344-18,720		
ACID/VOLUME	HCL Acid 49,750 GALS		
FRACTURE TREATMENT (Fluids/Prop Amounts)	Frac Fluid 211,688 BBLs Proppant 15,829,940 LBS		

Reported to Frac Focus

Minimum Gas Allowable (165-10-17-7) Gas Purchaser/Measurer **Chesapeake Operating, L.L.C.**
 OR
 Oil Allowable (165-10-13-3) 1st Sales Date **5/25/2016**

INITIAL TEST DATA

INITIAL TEST DATE	6/12/2016
OIL-BBL/DAY	1,224
OIL-GRAVITY (API)	
GAS-MCF/DAY	2,564
GAS-OIL RATIO CU FT/BBL	2,095
WATER-BBL/DAY	240
PUMPING OR FLOWING	FLOWING
INITIAL SHUT-IN PRESSURE	104
CHOKE SIZE	24/64
FLOW TUBING PRESSURE	1625

AS SUBMITTED

A record of the formations drilled through, and pertinent remarks are presented on the reverse. I declare that I have knowledge of the contents of this report and am authorized by my organization to make this report, which was prepared by me or under my supervision and direction, with the data and facts stated herein to be true, correct, and complete to the best of my knowledge and belief.

JP Powell SIGNATURE **JP Powell, Sr. Regulatory Analyst** NAME (PRINT OR TYPE)
P.O. BOX 18496 ADDRESS **OKLAHOMA CITY** CITY **OK** STATE **73154** ZIP
6/20/2016 DATE **405-848-8000** PHONE NUMBER
jp.powell@chk.com EMAIL ADDRESS

PLEASE TYPE OR USE BLACK INK ONLY
FORMATION RECORD

Give formation names and tops, if available, or descriptions and thickness of formations drilled through. Show intervals cored or drillstem tested.

LEASE NAME STARK 1-16-10

WELL NO. 1H

NAMES OF FORMATIONS	TOP
MISSISSIPPIAN	9,343

FOR COMMISSION USE ONLY

ITD on file YES NO

APPROVED _____ DISAPPROVED _____

2) Reject Codes

Were open hole logs run? yes no

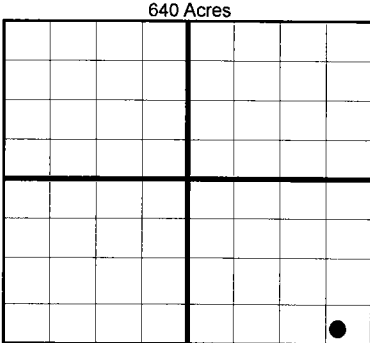
Date Last log was run N/A

Was CO₂ encountered? yes no at what depths?

Was H₂S encountered? yes no at what depths?

Were unusual drilling circumstances encountered? yes no
If yes, briefly explain.

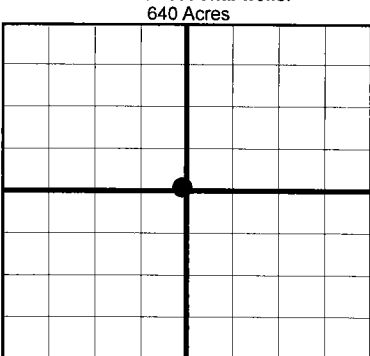
Other remarks: INTERIM ORDER 646425: EXCEPTION TO OAC 165:10-3-28 (SEC. 01 TWP 16N RGE 10W, BLAINE COUNTY) & INTERIM ORD 646389: EXCEPTION TO OAC 165-3-28 (SEC. 12 TWP 16N RGE 10W, BLAINE COUNTY)



If more than three drainholes are proposed, attach a separate sheet indicating the necessary information.

Direction must be stated in degrees azimuth. Please note, the horizontal drainhole and its end point must be located within the boundaries of the lease or spacing unit.

Directional surveys are required for all drainholes and directional wells.



BOTTOM HOLE LOCATION FOR DIRECTIONAL HOLE

SEC	TWP	RGE	COUNTY				
Spot Location	1/4	1/4	1/4	1/4	Feet From 1/4 Sec Lines	FSL	FWL
Measured Total Depth	True Vertical Depth		BHL From Lease, Unit, or Property Line:				

BOTTOM HOLE LOCATION FOR HORIZONTAL HOLE: (LATERALS)

LATERAL #1

SEC	TWP	RGE	COUNTY				
12	16N	10W	BLAINE				
Spot Location	SW 1/4	SE 1/4	SE 1/4	SE 1/4	Feet From 1/4 Sec Lines	FSL	FEL
Depth of Deviation	8,451	Radius of Turn		950	Direction	185	185
Measured Total Depth	18,819	True Vertical Depth		9,401	Total Length	9,476	
			BHL From Lease, Unit, or Property Line:				

LATERAL #2

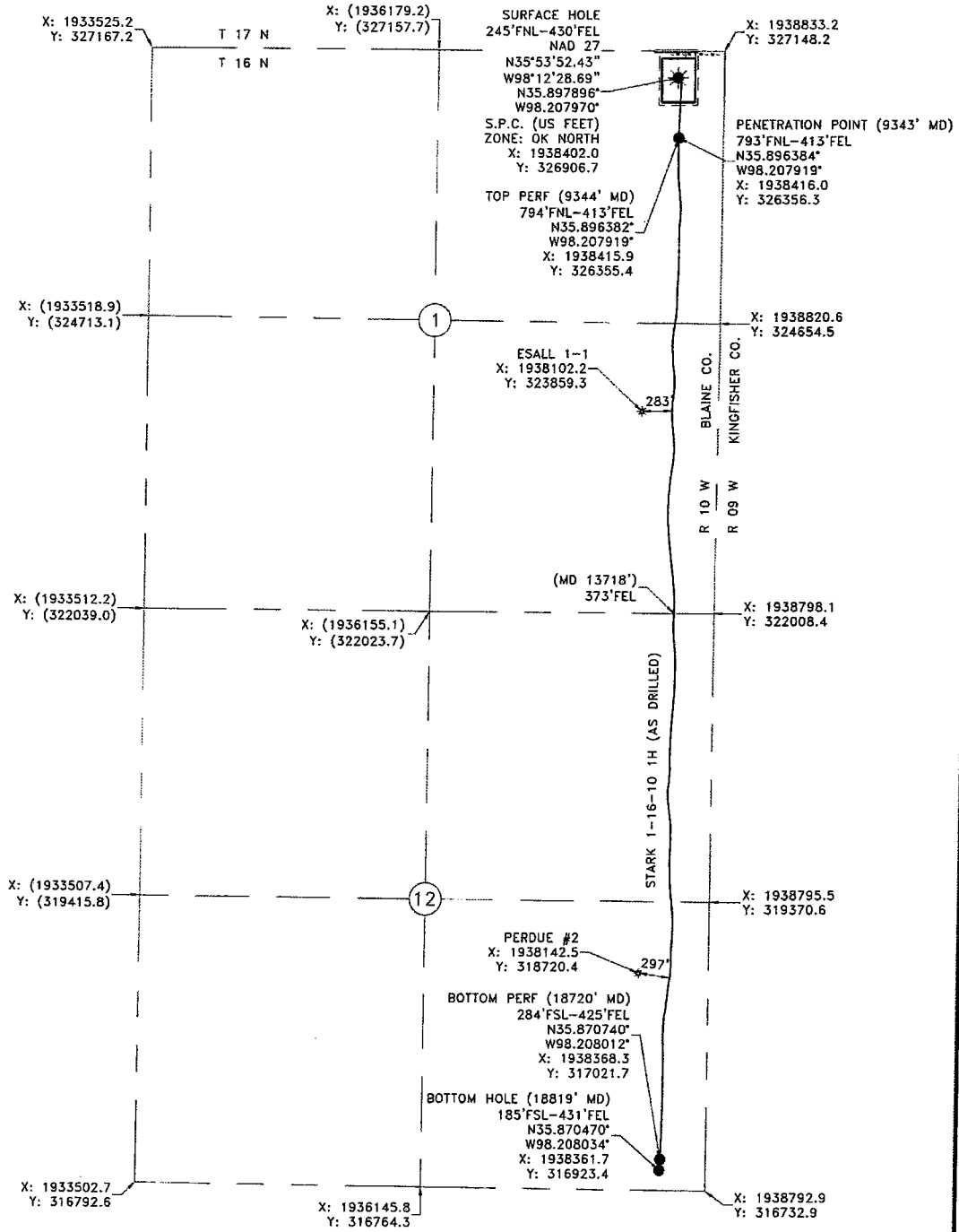
SEC	TWP	RGE	COUNTY				
Spot Location	1/4	1/4	1/4	1/4	Feet From 1/4 Sec Lines	FSL	FWL
Depth of Deviation	Radius of Turn		Direction				
Measured Total Depth	True Vertical Depth		BHL From Lease, Unit, or Property Line:				

LATERAL #3

SEC	TWP	RGE	COUNTY				
Spot Location	1/4	1/4	1/4	1/4	Feet From 1/4 Sec Lines	FSL	FWL
Depth of Deviation	Radius of Turn		Direction				
Measured Total Depth	True Vertical Depth		BHL From Lease, Unit, or Property Line:				

SECTIONS 1 AND 12, T 16 N - R 10 W, I.M.,
BLAINE COUNTY, OKLAHOMA

BEARINGS ARE GRID
OKLAHOMA SFC. MAD 27, NORTH ZONE



Operator: CHESAPEAKE OPERATING, L.L.C. Date Staked: 10/6/2015
Lease Name: STARK 1-15-10 Well No.: 1H Elevation: 1223'
Topography and Vegetation: FLAT CULTIVATED FIELD
Good Drill Site? YES Reference or Alt. Location Stakes Set: NONE
Best Accessibility to Location: FROM COUNTY ROAD
Distance and Direction from Hwy. Jct. or town: FROM THE US HWY 81 AND STATE HWY 33 JCT. HEAD WEST
15.7 MILES ON HWY 33, HEAD NORTH 4 MILES ON N2690 RD, WEST .06 MILE, TURN SOUTH INTO LOCATION

FINAL AS-DRILLED PLAT

As-drilled information furnished by
Chesapeake Operating, Inc.

Chesapeake Operating, Inc.

Gateway
Gateway Services Group, LLC

PO. BOX 980
MCKEER, OK 74855
OFF. (405) 275-0954
FAX (405) 275-0958
C.A. NO. 4091 (LS)
EXP. DATE 6-30-2016

EXHIBIT "A" AS-DRILLED
STARK 1-15-10 1H
245'FNL - 430'FEL
SECTIONS 1 AND 12, T 16 N - R 10 W, I.M.,
BLAINE COUNTY, OKLAHOMA

DRAWN BY: BOW DATE: 3/18/16 CHECKED: RLC
GATEWAY NO.: 15-0558-101AD R1 SCALE: 1"=1000'
WELL: ES6084

REV.	BY	DESCRIPTION	DATE
1	BOW	REVISE BOTTOM HOLE TEXT	8/2/16

LEGEND

SURFACE LOCATION

EXISTING WELL

PROPOSED DRILL PATH

EXISTING PIPELINE

ELECTRIC LINE

OVERHEAD POWER

FENCE