

Oklahoma Corporation Commission
Oil & Gas Conservation Division
Post Office Box 52000
Oklahoma City, Oklahoma 73152-2000
Rule 165: 10-3-25

Form 1002A

API No.: 35017248810000

Completion Report

Spud Date: February 13, 2016

OTC Prod. Unit No.: 01721758900000

Drilling Finished Date: March 10, 2016

1st Prod Date: June 07, 2016

Completion Date: June 07, 2016

Drill Type: HORIZONTAL HOLE

Min Gas Allowable: Yes

Well Name: OLD RICKY'S RIDGE 31_30-14N-7W 1HX

Purchaser/Measurer: DEVON GAS SERVICES LP

Location: CANADIAN 31 14N 7W
SW SE SW SW
253 FSL 833 FWL of 1/4 SEC
Latitude: 35.639144 Longitude: -97.991952
Derrick Elevation: 1325 Ground Elevation: 1295

First Sales Date: 06/07/2016

Operator: DEVON ENERGY PRODUCTION CO LP 20751

333 W SHERIDAN AVE
OKLAHOMA CITY, OK 73102-5010

Completion Type	
X	Single Zone
	Multiple Zone
	Commingled

Location Exception
Order No
638629

Increased Density
Order No
There are no Increased Density records to display.

Casing and Cement							
Type	Size	Weight	Grade	Feet	PSI	SAX	Top of CMT
CONDUCTOR	20	106.50	K-55	65		8	SURFACE
SURFACE	13 3/8	54.5	K-55	1507		1335	SURFACE
INTERMEDIATE	9 5/8	40	P-110HC	8730		345	6500
PRODUCTION	5 1/2	23	P-110EC	20054		2950	6723

Liner								
Type	Size	Weight	Grade	Length	PSI	SAX	Top Depth	Bottom Depth
There are no Liner records to display.								

Total Depth: 20054

Packer	
Depth	Brand & Type
There are no Packer records to display.	

Plug	
Depth	Plug Type
19962	CEMENT

Initial Test Data										
Test Date	Formation	Oil BBL/Day	Oil-Gravity (API)	Gas MCF/Day	Gas-Oil Ratio Cu FT/BBL	Water BBL/Day	Pumpin or Flowing	Initial Shut-In Pressure	Choke Size	Flow Tubing Pressure
Jun 25, 2016	WOODFORD	544	41	1032	1897	1627	FLOWING		32/64	

Completion and Test Data by Producing Formation										
Formation Name: WOODFORD			Code: 319WDFD			Class: OIL				
Spacing Orders				Perforated Intervals						
Order No	Unit Size			From			To			
637705	640			10167			19856			
638628	MULTIUNIT									
Acid Volumes				Fracture Treatments						
2095 BBLs /ACID				25,837,800 # / PROPPANT						
788,162 BBLs FLUID										

Formation	Top
WOODFORD	10045

Were open hole logs run? No
Date last log run:

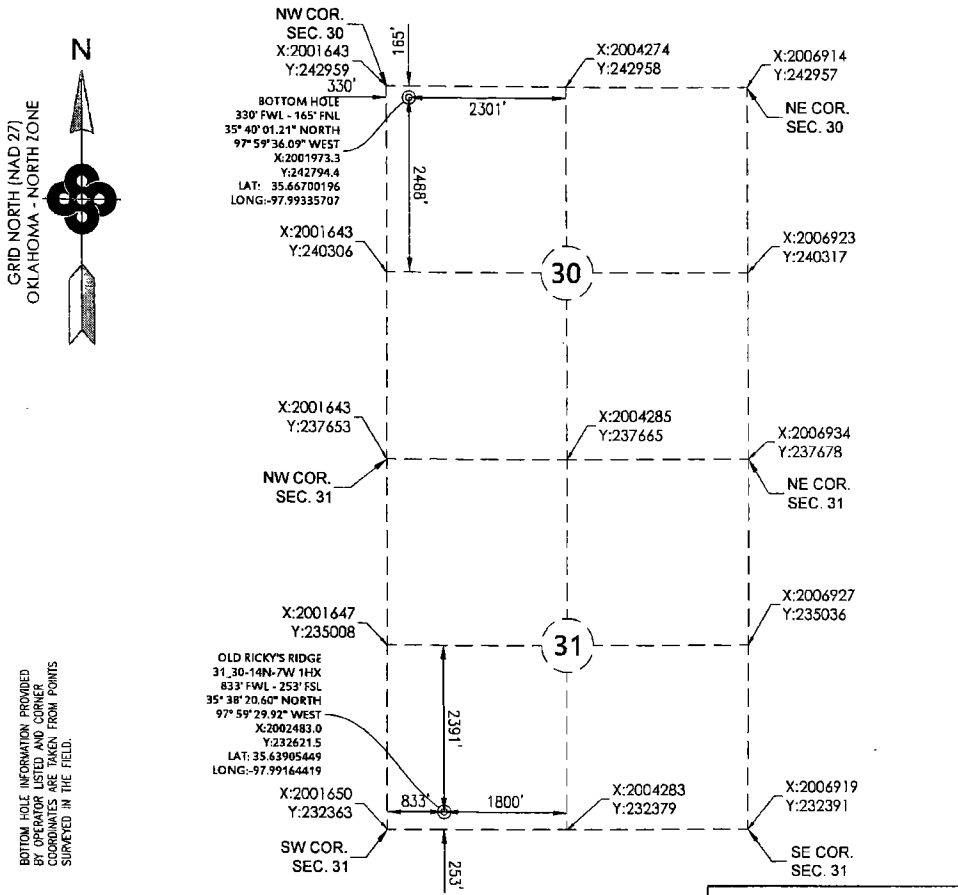
Were unusual drilling circumstances encountered? No
Explanation:

Other Remarks
OCC: FLE ORDER HAS NOT BEEN ISSUED. WE HAVE ACCEPTED OPERATORS DATA AS SUBMITTED. IRREGULAR SECTION.

Lateral Holes
Sec: 30 TWP: 14N RGE: 7W County: CANADIAN NE NW NW NW 66 FNL 373 FWL of 1/4 SEC Depth of Deviation: 9539 Radius of Turn: -394 Direction: 357 Total Length: 10121 Measured Total Depth: 20054 True Vertical Depth: 9723 End Pt. Location From Release, Unit or Property Line: 66

FOR COMMISSION USE ONLY
Status: Accepted
1133642

CANADIAN COUNTY, OKLAHOMA
833' FWL - 253' FSL SECTION 31 TOWNSHIP 14N RANGE 7W I.M.



BOTTOM HOLE INFORMATION PROVIDED BY OPERATOR LISTED AND CORNER COORDINATES ARE TAKEN FROM POINTS SURVEYED IN THE FIELD.

OPERATOR: DEVON ENERGY PRODUCTION COMPANY, L.P.

WELL NO: 1HX

ELEVATION:
1294.64 GR. AT STAKE

LEASE NAME: OLD RICKY'S RIDGE 31_30-14N-7W

TOPOGRAPHIC & VEGETATION: LOCATION FELL IN A FIELD

GOOD DRILL SITE: YES
REFERENCE STAKES OR ALTERNATE LOCATION STAKES SET: NONE

BEST ACCESSIBILITY TO LOCATION: FROM WEST LINE

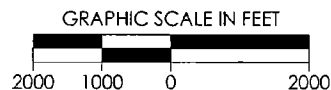
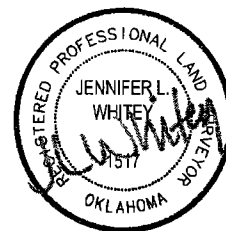
DISTANCE & DIRECTION
FROM HWY JCT OR TOWN: AT THE JCT. OF US-81 AND OK-3 HEAD SOUTH 8.5MI SOUTH TO E0950 RD. HEAD WEST 2MI. SITE IS ON THE NORTHEAST CORNER OF THE INTERSECTION

(THE FOLLOWING INFORMATION WAS GATHERED USING A GPS RECEIVER ACCURACY ±2-3 METERS)
GPS DATUM: NAD27
LAT: 35.63905449
LONG: -97.99164419
STATE PLANE COORDINATES:
ZONE: OK-NORTH NAD27
X: 2002483.0
Y: 232621.5

DATE STAKED: 04/21/2015

GENERAL NOTES:

THE TIES AND FOOTAGES SHOWN ON THIS PLAT ARE FROM LINES OF OCCUPATION FROM A SURVEY MADE ON THE GROUND AND / OR BEARING AND DISTANCES FROM THE GENERAL LAND OFFICE PLAT OF THE AREA SHOWN AND MAY NOT BE THE ACTUAL PROPERTY CORNERS. THIS PLAT DOES NOT REPRESENT A TRUE BOUNDARY SURVEY.



REVISION	"OLD RICKY'S RIDGE 31_30-14N-7W 1HX" PART OF THE SW/4 OF SECTION 31, T-14-N, R-7-W PROPOSED DRILL SITE CANADIAN COUNTY, OKLAHOMA		
	SCALE: 1" = 2000'	DRAWN BY: DW	SHEET NO.: 1 OF 6