

Oklahoma Corporation Commission
Oil & Gas Conservation Division
Post Office Box 52000
Oklahoma City, Oklahoma 73152-2000
Rule 165: 10-3-25

Form 1002A

API No.: 35073252400000

Completion Report

Spud Date: February 29, 2016

OTC Prod. Unit No.: 073-217474-0-0000

Drilling Finished Date: March 15, 2016

1st Prod Date: May 21, 2016

Completion Date: May 11, 2016

Drill Type: HORIZONTAL HOLE

Well Name: RAY 1605 3-27MH

Purchaser/Measurer:

Location: KINGFISHER 27 16N 5W
SW SW SE SW
208 FSL 1502 FWL of 1/4 SEC
Latitude: 35.82808 Longitude: 97.72219
Derrick Elevation: 0 Ground Elevation: 1040

First Sales Date:

Operator: OKLAHOMA ENERGY ACQUISITIONS LP 23509

15021 KATY FWY STE 400
HOUSTON, TX 77094-1900

Completion Type	
X	Single Zone
	Multiple Zone
	Commingled

Location Exception
Order No
649661

Increased Density
Order No
There are no Increased Density records to display.

Casing and Cement							
Type	Size	Weight	Grade	Feet	PSI	SAX	Top of CMT
CONDUCTOR	16		X42	123		27	SURFACE
SURFACE	9 5/8	36	J55	461		300	SURFACE
INTERMEDIATE	7	26	P110	7132		280	4187

Liner								
Type	Size	Weight	Grade	Length	PSI	SAX	Top Depth	Bottom Depth
LINER	4 1/2	11.6	P110	4996	0	0	6983	11979

Total Depth: 11982

Packer	
Depth	Brand & Type
6887	ASIII

Plug	
Depth	Plug Type
There are no Plug records to display.	

Initial Test Data										
Test Date	Formation	Oil BBL/Day	Oil-Gravity (API)	Gas MCF/Day	Gas-Oil Ratio Cu FT/BBL	Water BBL/Day	Pumpin or Flowing	Initial Shut-In Pressure	Choke Size	Flow Tubing Pressure
Jun 21, 2016	MISSISSIPPIAN(EX CHESTER)	22	39	110	5000	276	PUMPING		OPEN	3111

Completion and Test Data by Producing Formation		
Formation Name: MISSISSIPPIAN(EX CHESTER)	Code: 359MSNLC	Class: OIL
Spacing Orders		Perforated Intervals
Order No	Unit Size	From To
649156	640	6983 11982
Acid Volumes		Fracture Treatments
4660 LBS HCL		249,125 BBLs SW; 3,355,100 LBS SAND

Formation	Top
COTTAGE GROVE	5540
LAYTON	5618
CHECKERBOARD	5927
OSWEGO (4TH)	6390
PRUE	6484
VERDIGRIS	6523
PINK LIME	6618
MRMC	6725
MLM	6945

Were open hole logs run? No

Date last log run:

Were unusual drilling circumstances encountered? No

Explanation:

Other Remarks
THIS WELL IS AN OPEN HOLE COMPLETION FROM THE BOTTOM OF THE 7" CASING AT 7132' TO TERMINUS AT 11,982'. THE 4 1/2" LINER IS NOT CEMENTED. OCC: FLE ORDER HAS NOT BEEN ISSUED. WE HAVE ACCEPTED OPERATORS DATA AS SUBMITTED. IRREGULAR SECTION.

Lateral Holes

Sec: 27 TWP: 16N RGE: 5W County: KINGFISHER

NE NW NE NW

207 FNL 1869 FWL of 1/4 SEC

Depth of Deviation: 6597 Radius of Turn: 475 Direction: 359 Total Length: 4667

Measured Total Depth: 11982 True Vertical Depth: 6975 End Pt. Location From Release, Unit or Property Line: 207

FOR COMMISSION USE ONLY

1133699

Status: Accepted

API 073-25240



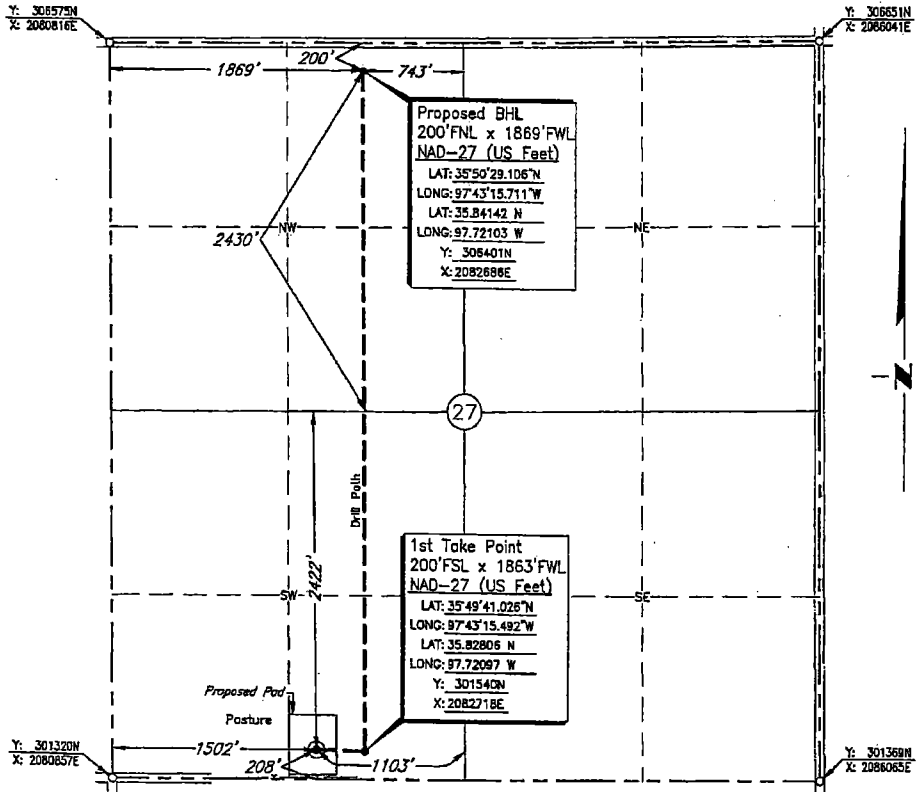
CIMARRON.
SURVEYING & MAPPING CO.

Oklahoma City, OK
(405) 692-7348
CIMSURVEY.COM

C.A. No. 1780 Expires June 30, 2016

KINGFISHER County, Oklahoma

208'FSL - 1502'FWL Section 27 Township 16N Range 5W I.M.



Scale: 1" = 1000'

Date Staked: December 16, 2015

GPS Observation: Latitude 35°49'41.080" N

Longitude 97°43'19.881" W

State Plane NAD27 Y: 301544N

Latitude 35.82808 N

Oklahoma North Zone: X: 2082357E

Longitude 97.72219 W

Operator: OKLAHOMA ENERGY ACQUISITIONS, LP

Elevation: 1040'

Lease Name: RAY 1605

Well No.: 3-27MH

Topography & Vegetation: Pasture

Alternate Location Stakes Set: No

Good Drill Site? Yes

Best Accessibility to Location: From the South Line

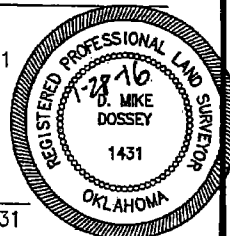
Distance & Direction

from Hwy Jct or Town: From the town of Cashion; Thence west approx. 2 3/4 miles;

Thence north 2 miles to the Southwest Corner of Section 27.

SURVEYOR'S CERTIFICATE:

I, D. MIKE DOSSEY, Registered Professional Land Surveyor, No. 1431 do hereby certify that the above described well location was carefully staked on the ground as shown and that all ties and distances shown are from existing lines of occupation.



JOB NO.:	1514275A				
DATE:	12/21/15	1	Added Drill Path	01/14/16	T.A.W.
DRAWN BY:	N.J.S.	NO.	REVISION	DATE	BY

D. Mike Dossey
D. MIKE DOSSEY R.P.L.S. # 1431