

Oklahoma Corporation Commission  
Oil & Gas Conservation Division  
Post Office Box 52000  
Oklahoma City, Oklahoma 73152-2000  
Rule 165: 10-3-25

Form 1002A

API No.: 35149217280000

**Completion Report**

Spud Date: February 02, 2016

OTC Prod. Unit No.: 149-217507

Drilling Finished Date: February 24, 2016

1st Prod Date: April 29, 2016

Completion Date: April 21, 2016

**Drill Type: HORIZONTAL HOLE**

Min Gas Allowable: Yes

Well Name: FRIEDRICH 23-11-17 1H

Purchaser/Measurer: CHESAPEAKE OPERATING LLC

Location: WASHITA 23 11N 17W  
SW SW SE SE  
305 FSL 1260 FEL of 1/4 SEC  
Derrick Elevation: 1570 Ground Elevation: 1545

First Sales Date: 04/29/2016

Operator: CHESAPEAKE OPERATING LLC 17441  
PO BOX 18496  
6100 N WESTERN AVE  
OKLAHOMA CITY, OK 73154-0496

Completion Type	
X	Single Zone
	Multiple Zone
	Commingled

Location Exception
Order No
646603

Increased Density
Order No
646746

Casing and Cement							
Type	Size	Weight	Grade	Feet	PSI	SAX	Top of CMT
SURFACE	9 5/8	40	J-55	1523		720	SURFACE
INTERMEDIATE	7	26	P-110EC	11820		392	8610
PRODUCTION	4 1/2	13.5	P-110EC	16100		500	8250

Liner								
Type	Size	Weight	Grade	Length	PSI	SAX	Top Depth	Bottom Depth
There are no Liner records to display.								

**Total Depth: 16100**

Packer	
Depth	Brand & Type
There are no Packer records to display.	

Plug	
Depth	Plug Type
There are no Plug records to display.	

Initial Test Data										
Test Date	Formation	Oil BBL/Day	Oil-Gravity (API)	Gas MCF/Day	Gas-Oil Ratio Cu FT/BBL	Water BBL/Day	Pumpin or Flowing	Initial Shut-In Pressure	Choke Size	Flow Tubing Pressure
May 17, 2016	DES MOINES GRANITE WASH			75		196	ARTIFICIAL LIFT			60

Completion and Test Data by Producing Formation										
Formation Name: DES MOINES GRANITE WASH			Code: 404DMSGW			Class: GAS				
<b>Spacing Orders</b>				<b>Perforated Intervals</b>						
<b>Order No</b>		<b>Unit Size</b>		<b>From</b>			<b>To</b>			
159617		640		12450			16003			
<b>Acid Volumes</b>				<b>Fracture Treatments</b>						
3,500 GALLONS HCL ACID				9,417 BARRELS FRAC FLUID, 512,600 POUNDS PROPPANT						

Formation	Top
DES MOINES GRANITE WASH	12419

Were open hole logs run? No

Date last log run:

Were unusual drilling circumstances encountered? No

Explanation:

Other Remarks
OCC - THIS DOCUMENT IS ACCEPTED BASED ON THE DATA SUBMITTED THE FINAL LOCATION EXCEPTION HAS NOT BEEN SUBMITTED.

Lateral Holes
Sec: 23 TWP: 11N RGE: 17W County: WASHITA
NW SE NW NE
978 FNL 1809 FEL of 1/4 SEC
Depth of Deviation: 12054 Radius of Turn: 326 Direction: 353 Total Length: 3681
Measured Total Depth: 16100 True Vertical Depth: 12380 End Pt. Location From Release, Unit or Property Line: 978

FOR COMMISSION USE ONLY
Status: Accepted
1133726

API NO. 35-149-21728  
 OTC PROD.  
 UNIT NO. 149-217507

PLEASE TYPE OR USE BLACK INK ONLY  
 NOTE:  
 Attach copy of original 1002A if recompletion or reentry.

OKLAHOMA CORPORATION COMMISSION  
 Oil & Gas Conservation Division  
 Post Office Box 52000  
 Oklahoma City, Oklahoma 73152-2000  
 Rule 165:10-3-25

Form 1002A  
 Rev. 2009  
**RECEIVED**  
 655819

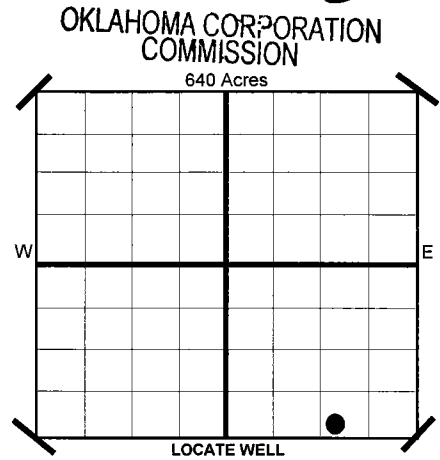
JUN 09 2016 *PTA*

ORIGINAL  
 AMENDED  
 Reason Amended

COMPLETION REPORT

TYPE OF DRILLING OPERATION  
 STRAIGHT HOLE  DIRECTIONAL HOLE  HORIZONTAL HOLE  
 If directional or horizontal, see reverse for bottom hole location.

SPUD DATE 2/2/2016  
 DRLG FINISHED DATE 2/24/2016  
 DATE OF WELL COMPLETION 4/21/2016  
 1ST PROD DATE 4/29/2016  
 RECOMP DATE  
 Longitude (if Known)



COUNTY WASHITA SEC 23 TWP 11N RGE 17W  
 LEASE NAME FRIEDRICH 23-11-17 WELL NO. 1H  
 SHL SW 1/4 SW 1/4 SE 1/4 SE 1/4 FSL 305 1/4 SEC 1,260  
 ELEVATION Derrick Fl 1,570 Ground 1,545  
 OPERATOR NAME CHESAPEAKE OPERATING, L.L.C. OTC/OCC OPERATOR NO. 17441  
 ADDRESS P.O. BOX 18496  
 CITY OKLAHOMA CITY STATE OK ZIP 73154

COMPLETION TYPE  
 SINGLE ZONE  
 MULTIPLE ZONE  
 Application Date  
 COMMINGLED  
 Application Date  
 LOCATION EXCEPTION ORDER NO. 646603 (INTERIM)  
 INCREASED DENSITY ORDER NO. 646746

CASING & CEMENT (Form 1002C must be attached)

TYPE	SIZE	WEIGHT	GRADE	FEET	PSI	SAX	TOP	
CONDUCTOR								
SURFACE	9 5/8"	40#	J-55	1,523		720	SURFACE	
INTERMEDIATE	7"	26#	P-110EC	11,820		392	8,610	
PRODUCTION	4 1/2"	13.5#	P-110EC	16,100		500	8,250	
LINER								
							TOTAL DEPTH	16,100

PACKER @ N/A BRAND & TYPE  
 PACKER @ \_\_\_\_\_ BRAND & TYPE \_\_\_\_\_

PLUG @ \_\_\_\_\_ TYPE \_\_\_\_\_  
 PLUG @ \_\_\_\_\_ TYPE \_\_\_\_\_

COMPLETION & TEST DATA BY PRODUCING FORMATION

FORMATION	SPACING & SPACING ORDER NUMBER	CLASS: Oil, Gas, Dry, Inj. Disp, Comm Disp, Svc	PERFORATED INTERVALS	ACID/VOLUME	FRACTURE TREATMENT (Fluids/Prop Amounts)
DES MOINES GRANITE WASH	640 159617	GAS	12.450-16.003	HCL Acid 3,500 GALS Frac Fluid 9,417 BBLs Proppant 512,600 LBS	

*404 DMSGW*  
*Reported to Frac Focus*

Minimum Gas Allowable (165:10-17-7)  OR Gas Purchaser/Measurer Chesapeake Operating, L.L.C.  
 Oil Allowable (165:10-13-3) 1st Sales Date 4/29/2016

INITIAL TEST DATA

INITIAL TEST DATE	5/17/2016
OIL-BBL/DAY	0
OIL-GRAVITY (API)	
GAS-MCF/DAY	75
GAS-OIL RATIO CU FT/BBL	
WATER-BBL/DAY	196
PUMPING OR FLOWING	ARTIFICIAL LIFT
INITIAL SHUT-IN PRESSURE	
CHOKE SIZE	
FLOW TUBING PRESSURE	60

**AS SUBMITTED**

A record of the formations drilled through, and pertinent remarks are presented on the reverse. I declare that I have knowledge of the contents of this report and am authorized by my organization to make this report, which was prepared by me or under my supervision and direction, with the data and facts stated herein to be true, correct, and complete to the best of my knowledge and belief.

*JP Powell*  
 SIGNATURE JP Powell, Sr. Regulatory Analyst 6/8/2016 405-848-8000  
 P.O. BOX 18496 OKLAHOMA CITY OK 73154  
 ADDRESS CITY STATE ZIP DATE PHONE NUMBER  
 ip.powell@chk.com  
 EMAIL ADDRESS

PLEASE TYPE OR USE BLACK INK ONLY  
FORMATION RECORD

Give formation names and tops, if available, or descriptions and thickness of formations drilled through. Show intervals cored or drillstem tested.

LEASE NAME FRIEDRICH 23-11-17

WELL NO. 1H

NAMES OF FORMATIONS	TOP
DES MOINES GRANITE WASH	12,419

FOR COMMISSION USE ONLY

ITD on file  YES  NO

APPROVED \_\_\_\_\_ DISAPPROVED \_\_\_\_\_

2) Reject Codes \_\_\_\_\_

Were open hole logs run? \_\_\_\_\_ yes  no

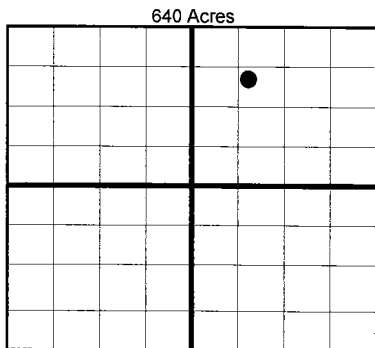
Date Last log was run N/A

Was CO<sub>2</sub> encountered? \_\_\_\_\_ yes  no at what depths?

Was H<sub>2</sub>S encountered? \_\_\_\_\_ yes  no at what depths?

Were unusual drilling circumstances encountered? \_\_\_\_\_ yes  no  
If yes, briefly explain.

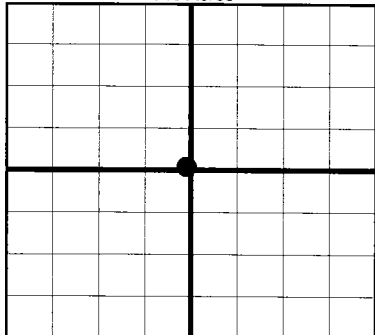
Other remarks:



If more than three drainholes are proposed, attach a separate sheet indicating the necessary information.

Direction must be stated in degrees azimuth. Please note, the horizontal drainhole and its end point must be located within the boundaries of the lease or spacing unit.

**Directional surveys are required for all drainholes and directional wells.**



**BOTTOM HOLE LOCATION FOR DIRECTIONAL HOLE**

SEC	TWP	RGE	COUNTY				
Spot Location	1/4	1/4	1/4	1/4	Feet From 1/4 Sec Lines	FSL	FWL
Measured Total Depth	True Vertical Depth		BHL From Lease, Unit, or Property Line:				

**BOTTOM HOLE LOCATION FOR HORIZONTAL HOLE: (LATERALS)**

**LATERAL #1**

SEC	TWP	RGE	COUNTY				
23	11N	17W	WASHITA				
Spot Location	NW 1/4	SE 1/4	NW 1/4	NE 1/4	Feet From 1/4 Sec Lines	FNL 978	FEL 1,809
Depth of Deviation	12,054	Radius of Turn	326	Direction	353	Total Length	3,681
Measured Total Depth	16,100	True Vertical Depth	12,380	BHL From Lease, Unit, or Property Line: 978			

**LATERAL #2**

SEC	TWP	RGE	COUNTY				
Spot Location	1/4	1/4	1/4	1/4	Feet From 1/4 Sec Lines	FSL	FWL
Depth of Deviation	Radius of Turn		Direction	Total Length			
Measured Total Depth	True Vertical Depth		BHL From Lease, Unit, or Property Line:				

**LATERAL #3**

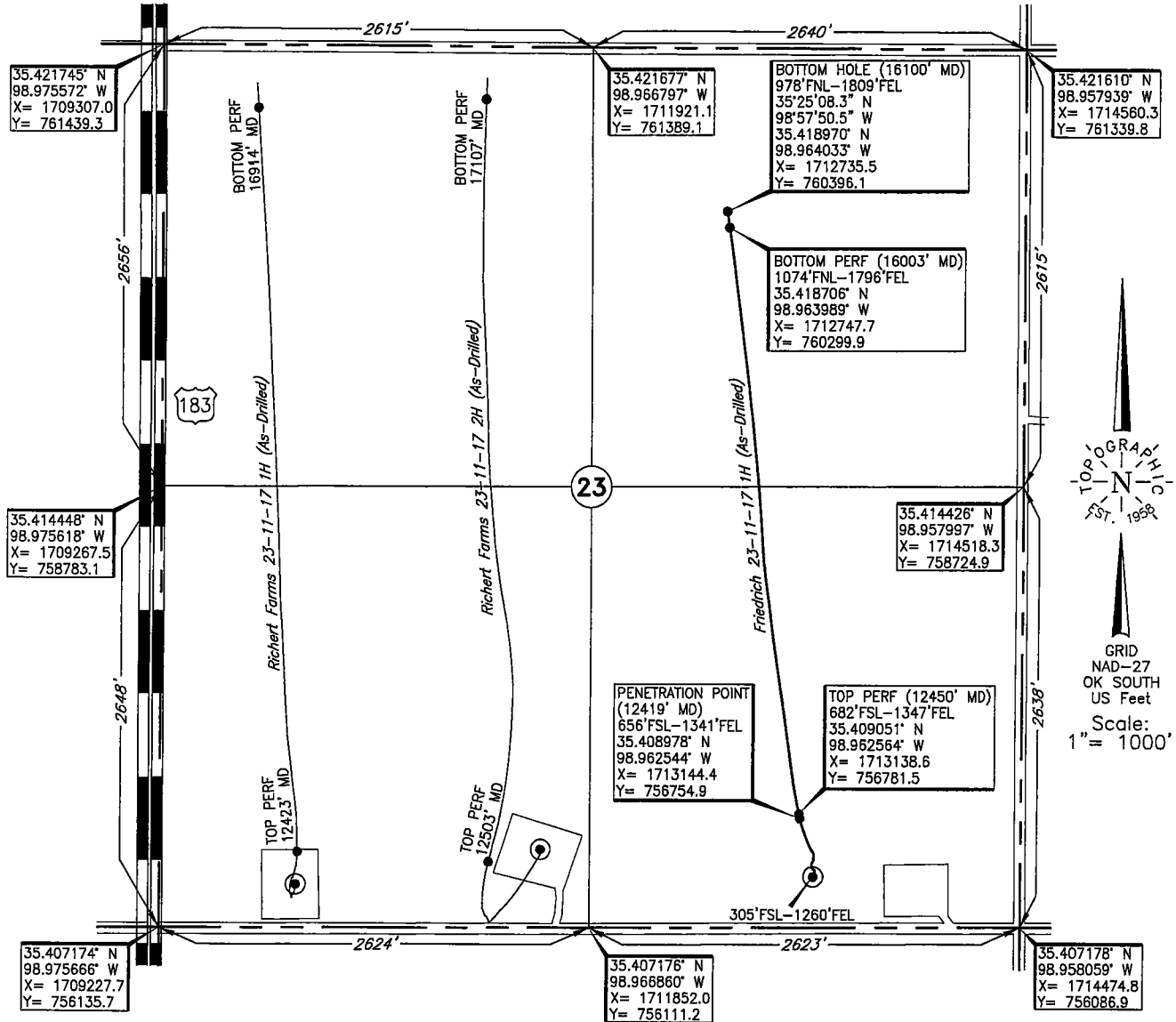
SEC	TWP	RGE	COUNTY				
Spot Location	1/4	1/4	1/4	1/4	Feet From 1/4 Sec Lines	FSL	FWL
Depth of Deviation	Radius of Turn		Direction	Total Length			
Measured Total Depth	True Vertical Depth		BHL From Lease, Unit, or Property Line:				

**TOPOGRAPHIC LAND SURVEYORS OF OKLAHOMA**

6709 NORTH CLASSEN BLVD., OKLA. CITY, OKLA. 73116 \* LOCAL (405) 843-4847 \* OUT OF STATE (800) 654-3219

Certificate of Authorization No. 1293. LS  
WASHITA

County, Oklahoma  
305'FSL-1260'FEL Section 23 Township 11N Range 17W I.M.



Operator: CHESAPEAKE OPERATING, L.L.C.

Lease Name: FRIEDRICH 23-11-17

**ELEVATION:**  
1545' Gr. at Level Pad

Well No.: 1H

Topography & Vegetation Loc. fell on level pad, ±226' North of pipeline, ±608' NW of existing well, ±265' North of water line, ±275' North of power line

Good Drill Site? Yes Reference Stakes or Alternate Location Stakes Set None

Best Accessibility to Location From South off county road

Distance & Direction from Hwy Jct or Town From Cordell, Ok, go ±8.3 miles North on US. Hwy. 183, then ±1 mile East to the SE Cor. of Sec. 23-T11N-R17W

This information was gathered with a GPS receiver with ±1 foot Horiz./Vert. accuracy

DATUM: NAD-27  
LAT: 35°24'28.9"N  
LONG: 98°57'44.2"W  
LAT: 35.408015° N  
LONG: 98.962280° W  
STATE PLANE  
COORDINATES: (US Feet)  
ZONE: OK SOUTH  
X: 1713219.8  
Y: 756403.5

260202 Date of Drawing: May 04, 2016  
Invoice # 250404 Date Staked: Sep. 24, 2015 JP

**FINAL AS-DRILLED PLAT**

AS-DRILLED INFORMATION  
FURNISHED BY CHESAPEAKE OPERATING, L.L.C.

API NO. 35-149-21728  
 OTC PROD. UNIT NO. 149-217507

PLEASE TYPE OR USE BLACK INK ONLY  
 NOTE: Attach copy of original 1002A if recompletion or reentry.

7/1/16  
 OKLAHOMA CORPORATION COMMISSION  
 Oil & Gas Conservation Division  
 Post Office Box 52000  
 Oklahoma City, Oklahoma 73152-2000  
 Rule 165:10-3-25

RECEIVED  
 Form 1002A Rev. 2009

JUN 09 2016  
 PTH

A: 124323 S

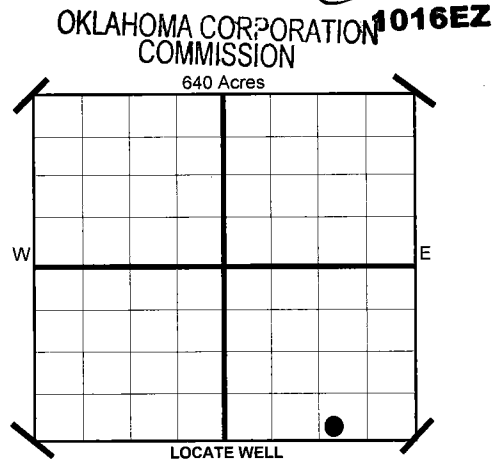
ORIGINAL AMENDED Reason Amended

COMPLETION REPORT

TYPE OF DRILLING OPERATION  
 STRAIGHT HOLE  DIRECTIONAL HOLE  HORIZONTAL HOLE  
 SERVICE WELL  
 If directional or horizontal, see reverse for bottom hole location.

COUNTY WASHITA SEC 23 TWP 11N RGE 17W  
 LEASE NAME FRIEDRICH 23-11-17 WELL NO. 1H  
 SHL SW 1/4 SW 1/4 SE 1/4 SE 1/4 FSL 305 1/4 SEC 1,260  
 ELEVATION 1,570 Ground 1,545  
 DERRICK FL  
 OPERATOR NAME CHESAPEAKE OPERATING, L.L.C. OTC/OCC OPERATOR NO. 17441  
 ADDRESS P.O. BOX 18496  
 CITY OKLAHOMA CITY STATE OK ZIP 73154

SPUD DATE 2/2/2016  
 DRLG FINISHED DATE 2/24/2016  
 DATE OF WELL COMPLETION 4/21/2016  
 1ST PROD DATE 4/29/2016  
 RECOMP DATE  
 Longitude (if Known)



COMPLETION TYPE  
 SINGLE ZONE  
 MULTIPLE ZONE  
 LOCATION EXCEPTION ORDER NO. 646603 (INTERIM)  
 INCREASED DENSITY ORDER NO. 646746

CASING & CEMENT (Form 1002C must be attached)

TYPE	SIZE	WEIGHT	GRADE	FEET	PSI	SAX	TOP	
CONDUCTOR								
SURFACE	9 5/8"	40#	J-55	1,523		720	SURFACE	
INTERMEDIATE	7"	26#	P-110EC	11,820		392	8,610	
PRODUCTION	4 1/2"	13.5#	P-110EC	16,100		500	8,250	
LINER								
							TOTAL DEPTH	16,100

PACKER @ N/A BRAND & TYPE PLUG @ TYPE PLUG @ TYPE PLUG @ TYPE  
 PACKER @ BRAND & TYPE PLUG @ TYPE PLUG @ TYPE

COMPLETION & TEST DATA BY PRODUCING FORMATION

FORMATION	DES MOINES GRANITE WASH						
SPACING & SPACING ORDER NUMBER	640 159617						
CLASS: Oil, Gas, Dry, Inj. Disp, Comm Disp, Svc	GAS						
PERFORATED INTERVALS	12,450-16,003						
ACID/VOLUME	HCL Acid 3,500 GALS						
FRACTURE TREATMENT (Fluids/Prop Amounts)	Frac Fluid 9,417 BBLs Proppant 512,600 LBS						

404 DMSGW

Reported to Frac Focus

Minimum Gas Allowable (165:10-17-7) Gas Purchaser/Measurer Chesapeake Operating, L.L.C.  
 Oil Allowable (165:10-13-3) 1st Sales Date 4/29/2016

INITIAL TEST DATA

INITIAL TEST DATE	5/17/2016				
OIL-BBL/DAY	0				
OIL-GRAVITY ( API)					
GAS-MCF/DAY	75				
GAS-OIL RATIO CU FT/BBL					
WATER-BBL/DAY	196				
PUMPING OR FLOWING	ARTIFICIAL LIFT				
INITIAL SHUT-IN PRESSURE					
CHOKE SIZE	1				
FLOW TUBING PRESSURE	60				

AS SUBMITTED

SCANNED

A record of the formations drilled through, and pertinent remarks are presented on the reverse. I declare that I have knowledge of the contents of this report and am authorized by my organization to make this report, which was prepared by me or under my supervision and direction, with the data and facts stated herein to be true, correct, and complete to the best of my knowledge and belief.

JP Powell, Sr. Regulatory Analyst  
 SIGNATURE DATE 6/8/2016 PHONE NUMBER 405-848-8000  
 P.O. BOX 18496 OKLAHOMA CITY OK 73154  
 ADDRESS CITY STATE ZIP EMAIL ADDRESS jp.powell@chk.com

EZ

Form 1004