

Oklahoma Corporation Commission
Oil & Gas Conservation Division
Post Office Box 52000
Oklahoma City, Oklahoma 73152-2000
Rule 165: 10-3-25

Form 1002A

API No.: 35047237740002

Completion Report

Spud Date: December 05, 1984

OTC Prod. Unit No.: 047-04733

Drilling Finished Date: December 22, 1984

Amended

1st Prod Date: February 20, 1985

Amend Reason: TEMPORARILY ABANDONED

Completion Date: February 07, 1985

Recomplete Date: June 02, 2016

Drill Type: STRAIGHT HOLE

Well Name: CUPPS 1

Purchaser/Measurer:

Location: GARFIELD 30 20N 7W
C SW SW
660 FSL 660 FWL of 1/4 SEC
Derrick Elevation: 1185 Ground Elevation: 1171

First Sales Date:

Operator: HODGDEN OPERATING CO INC 1022
PO BOX 3485
1005 TRAILS WEST LOOP
ENID, OK 73702-3485

Completion Type	
<input type="checkbox"/>	Single Zone
<input type="checkbox"/>	Multiple Zone
<input checked="" type="checkbox"/>	Commingled

Location Exception
Order No
There are no Location Exception records to display.

Increased Density
Order No
There are no Increased Density records to display.

Casing and Cement							
Type	Size	Weight	Grade	Feet	PSI	SAX	Top of CMT
SURFACE	8 5/8	23	J-55	546	600	300	SURFACE
PRODUCTION	5 1/2	17	SS-95	8249	2000	350	6220

Liner								
Type	Size	Weight	Grade	Length	PSI	SAX	Top Depth	Bottom Depth
There are no Liner records to display.								

Total Depth: 8381

Packer	
Depth	Brand & Type
There are no Packer records to display.	

Plug	
Depth	Plug Type
There are no Plug records to display.	

Initial Test Data										
Test Date	Formation	Oil BBL/Day	Oil-Gravity (API)	Gas MCF/Day	Gas-Oil Ratio Cu FT/BBL	Water BBL/Day	Pumpin or Flowing	Initial Shut-In Pressure	Choke Size	Flow Tubing Pressure
There are no Initial Data records to display.										

Completion and Test Data by Producing Formation										
Formation Name: MISSISSIPPI			Code: 351MISS				Class: TA			
Spacing Orders					Perforated Intervals					
Order No		Unit Size			From			To		
There are no Spacing Order records to display.					7273			7723		
Acid Volumes					Fracture Treatments					
There are no Acid Volume records to display.					There are no Fracture Treatments records to display.					

Formation Name: HUNTON			Code: 269HNTN				Class: TA			
Spacing Orders					Perforated Intervals					
Order No		Unit Size			From			To		
There are no Spacing Order records to display.					7898			7950		
Acid Volumes					Fracture Treatments					
15,000 GALLONS					There are no Fracture Treatments records to display.					

Formation	Top
CLEVELAND SAND	6290
BIG LIME	6365
OSWEGO SERIES	6404
INOLA LIME	6819
MISSISSIPPI	7268
HUNTON	7919
VIOLA	8130
SIMPSON SERIES	8292
SECOND WILCOX	8318

Were open hole logs run? No

Date last log run:

Were unusual drilling circumstances encountered? No

Explanation:

Other Remarks
There are no Other Remarks.

FOR COMMISSION USE ONLY

1133658

Status: Accepted

RECEIVED

JUN 02 2016

Form 1002A
Rev. 2009

OKLAHOMA CORPORATION
COMMISSION

API NO. 04723774
OTC PROD. UNIT NO. 047-04733

PLEASE TYPE OR USE BLACK INK ONLY
NOTE:

Attach copy of original 1002A
if recompletion or reentry.

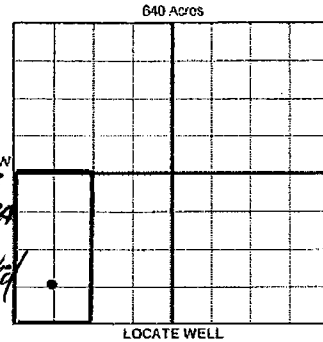
OKLAHOMA CORPORATION COMMISSION
Oil & Gas Conservation Division
Post Office Box 52000
Oklahoma City, Oklahoma 73162-2000
Rule 165:10-3-25

ORIGINAL
 AMENDED (Reason) T & A

COMPLETION REPORT

TYPE OF DRILLING OPERATION
 STRAIGHT HOLE DIRECTIONAL HOLE HORIZONTAL HOLE
 SERVICE WELL
If directional or horizontal, see reverse for bottom hole location.

SPUD DATE 12/5/84
DRLG FINISHED DATE 12/22/84
DATE OF WELL COMPLETION 2/7/85
1st PROD DATE 2/20/85
RECOMP DATE ~~2/7/85~~
Longitude (if known) ~~6-2-16~~
OTC/OCC OPERATOR NO. 01022



COUNTY Garfield SEC 30 TWP 20N RGE 7W
LEASE NAME Cupps WELL NO. 1
SW 1/4 SW 1/4 1/4 1/4 FSL OF 1/4 SEC 660 FWL OF 1/4 SEC 660
ELEVATION 1185 Ground 1171 Latitude (if known)
OPERATOR NAME Hodgden Operating Co, Inc. ADDRESS P.O. Box 3485
CITY Enid STATE OK ZIP 73702

COMPLETION TYPE
 SINGLE ZONE
 MULTIPLE ZONE Application Date
 COMINGLED Application Date
 LOCATION EXCEPTION ORDER NO.
 INCREASED DENSITY ORDER NO.

CASING & CEMENT (Form 1002G must be attached)

TYPE	SIZE	WEIGHT	GRADE	FEET	PSI	SAX	TOP OF CMT
CONDUCTOR							
SURFACE	8-5/8"	23#	J-55	546'	600	300	Surface
INTERMEDIATE							
PRODUCTION	5-1/2"	17#	SS-95	8249'	2000	350	6220'
LINER							
							8381'

PACKER @ BRAND & TYPE PLUG @ TYPE PLUG @ TYPE TOTAL DEPTH
PACKER @ BRAND & TYPE PLUG @ TYPE PLUG @ TYPE

COMPLETION & TEST DATA BY PRODUCING FORMATION 351 MISS, 269 HNTN

FORMATION	Mississippi	Hunton
SPACING & SPACING ORDER NUMBER	NS	NS
CLASS: Oil, Gas, Dry, Inj, Disp, Comm Disp, Swd	DTA	DTA
PERFORATED INTERVALS	7459' to 7723' 7304' to 7430' 7273' to 7283'	7898' to 7950'
ACID VOLUME		15,000 gal
FRACTURE TREATMENT (Fluids/Prop Amounts)		

Min Gas Allowable (165:10-17-7) OR Oil Allowable (165:10-13-3) Gas Purchaser/Measurer First Sales Date

INITIAL TEST DATA

INITIAL TEST DATE		2/19/1986
OIL-BBL/DAY	NA	3
OIL-GRAVITY (API)	NA	44.9
GAS-MCF/DAY	NA	40
GAS-OIL RATIO CU FT/BBL	NA	13333 to 1
WATER-BBL/DAY	NA	80
PUMPING OR FLOWING	FL-Shut In	Swab & Flowing
INITIAL SHUT-IN PRESSURE		250#
CHOKE SIZE		Open
FLOW TUBING PRESSURE		20

AS SUBMITTED

A record of the formations drilled through, and pertinent remarks are presented on the reverse. I declare that I have knowledge of the contents of this report and am authorized by my organization to make this report, which was prepared by me or under my supervision and direction, with the data and facts stated herein to be true, correct, and complete to the best of my knowledge and belief.

Michael L. Hodgden SIGNATURE Michael L. Hodgden, Sec/Trea NAME (PRINT OR TYPE) 5/17/2016 DATE 580-233-2870 PHONE NUMBER
P.O. Box 3485 ADDRESS Enid CITY OK STATE 73702 ZIP hodgdenoil@yahoo.com EMAIL ADDRESS

PLEASE TYPE OR USE BLACK INK ONLY
FORMATION RECORD

Give formation names and tops, if available, or descriptions and thickness of formations drilled through. Show intervals cored or drillstem tested.

LEASE NAME Cupps WELL NO. 1

NAMES OF FORMATIONS	TOP
Cleveland Sand	6,290
Big Lime	6,365
Oswego Series	6404
Inola Lime	6,819
Mississippi	7,268
Hunton	7,919
Viola	8,130
Simpson Series	8,292
Second Wilcox	8,318
Total Depth	8,381

FOR COMMISSION USE ONLY

ITD on file YES NO

APPROVED _____ DISAPPROVED _____

2) Reject Codes

Were open hole logs run? yes no

Date Last log was run _____

Was CO₂ encountered? yes no at what depths? _____

Was H₂S encountered? yes no at what depths? _____

Were unusual drilling circumstances encountered? yes no

If yes, briefly explain below _____

Other remarks: _____

640 Acres

BOTTOM HOLE LOCATION FOR DIRECTIONAL HOLE

SEC	TWP	RGE	COUNTY				
Spot Location	1/4	1/4	1/4	1/4	Feet From 1/4 Sec Lines	FSL	FWL
Measured Total Depth	True Vertical Depth		BHL From Lease, Unit, or Property Line:				

BOTTOM HOLE LOCATION FOR HORIZONTAL HOLE: (LATERALS)

LATERAL #1

SEC	TWP	RGE	COUNTY				
Spot Location	1/4	1/4	1/4	1/4	Feet From 1/4 Sec Lines	FSL	FWL
Depth of Deviation	Radius of Turn		Direction		Total Length		
Measured Total Depth	True Vertical Depth		BHL From Lease, Unit, or Property Line:				

If more than three drainholes are proposed, attach a separate sheet indicating the necessary information.

Direction must be stated in degrees azimuth. Please note, the horizontal drainhole and its end point must be located within the boundaries of the lease or spacing unit.

LATERAL #2

SEC	TWP	RGE	COUNTY				
Spot Location	1/4	1/4	1/4	1/4	Feet From 1/4 Sec Lines	FSL	FWL
Depth of Deviation	Radius of Turn		Direction		Total Length		
Measured Total Depth	True Vertical Depth		BHL From Lease, Unit, or Property Line:				

Directional surveys are required for all drainholes and directional wells.

640 Acres

LATERAL #3

SEC	TWP	RGE	COUNTY				
Spot Location	1/4	1/4	1/4	1/4	Feet From 1/4 Sec Lines	FSL	FWL
Depth of Deviation	Radius of Turn		Direction		Total Length		
Measured Total Depth	True Vertical Depth		BHL From Lease, Unit, or Property Line:				