

Oklahoma Corporation Commission
Oil & Gas Conservation Division
Post Office Box 52000
Oklahoma City, Oklahoma 73152-2000
Rule 165: 10-3-25

Form 1002A

API No.: 35003232070000

Completion Report

Spud Date: May 19, 2015

OTC Prod. Unit No.:

Drilling Finished Date: June 24, 2015

1st Prod Date:

Completion Date: May 23, 2016

Drill Type: HORIZONTAL HOLE

Well Name: KLETKE 18-27-12 1H

Purchaser/Measurer:

Location: ALFALFA 18 27N 12W
SW SW SW SE
265 FSL 2450 FEL of 1/4 SEC
Derrick Elevation: 1300 Ground Elevation: 1278

First Sales Date:

Operator: CHESAPEAKE OPERATING LLC 17441
PO BOX 18496
6100 N WESTERN AVE
OKLAHOMA CITY, OK 73154-0496

Completion Type	
<input type="checkbox"/>	Single Zone
<input type="checkbox"/>	Multiple Zone
<input type="checkbox"/>	Commingled

Location Exception	
Order No	
639191	

Increased Density	
Order No	
639190	

Casing and Cement							
Type	Size	Weight	Grade	Feet	PSI	SAX	Top of CMT
SURFACE	13 3/8	48	J-55	523		460	SURFACE
INTERMEDIATE	9 5/8	36	J-55	1202		360	SURFACE
PRODUCTION	7	26	P-110EC	5704		230	3315

Liner								
Type	Size	Weight	Grade	Length	PSI	SAX	Top Depth	Bottom Depth
LINER	4 1/2	11.6	P-110EC	5054	0	440	5479	10533

Total Depth: 10535

Packer	
Depth	Brand & Type
There are no Packer records to display.	

Plug	
Depth	Plug Type
There are no Plug records to display.	

Initial Test Data										
Test Date	Formation	Oil BBL/Day	Oil-Gravity (API)	Gas MCF/Day	Gas-Oil Ratio Cu FT/BBL	Water BBL/Day	Pumpin or Flowing	Initial Shut-In Pressure	Choke Size	Flow Tubing Pressure
There are no Initial Data records to display.										

Completion and Test Data by Producing Formation		
Formation Name: N/A	Code:	Class: TA

Formation	Top
MISSISSIPPIAN	5350

Were open hole logs run? No

Date last log run:

Were unusual drilling circumstances encountered? No

Explanation:

Other Remarks
WAITING ON COMPLETION

Lateral Holes
Sec: 18 TWP: 27N RGE: 12W County: ALFALFA NE NE NW NW 164 FNL 1052 FWL of 1/4 SEC Depth of Deviation: 4990 Radius of Turn: 403 Direction: 352 Total Length: 5185 Measured Total Depth: 10535 True Vertical Depth: 5393 End Pt. Location From Release, Unit or Property Line: 164

FOR COMMISSION USE ONLY	
Status: Accepted	1133651

API NO. 35-003-23207
 OTC PROD.
 UNIT NO. N/A

PLEASE TYPE OR USE BLACK INK ONLY
 NOTE: Attach copy of original 1002A if recompletion or reentry.

OKLAHOMA CORPORATION COMMISSION
 Oil & Gas Conservation Division
 Post Office Box 52000
 Oklahoma City, Oklahoma 73152-2000
 Rule 165:10-3-25

RECEIVED
 5-23-2016
 1002A
 2009

MAY 23 2016

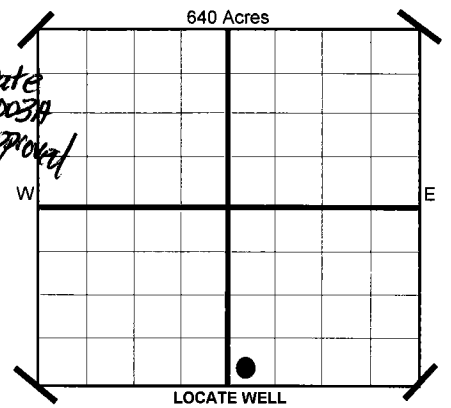
OKLAHOMA CORPORATION COMMISSION

ORIGINAL
 AMENDED
 Reason Amended _____

COMPLETION REPORT

TYPE OF DRILLING OPERATION
 STRAIGHT HOLE DIRECTIONAL HOLE HORIZONTAL HOLE
 SERVICE WELL
 If directional or horizontal, see reverse for bottom hole location.

SPUD DATE 5/19/2015
 DRLG FINISHED DATE 6/24/2015
 DATE OF WELL COMPLETION 5-23-2016
 1ST PROD DATE N/A
 RECOMP DATE
 Longitude (if Known)
 OTC/OCC OPERATOR NO. 17441



COUNTY ALFALFA SEC 18 TWP 27N RGE 12W
 LEASE NAME KLETKE 18-27-12 WELL NO. 1H
 SHL SW 1/4 SW 1/4 SW 1/4 SE 1/4 FSL 265 FEL DF 1/4 SEC 2,450
 ELEVATION Derrick Ft 1,300 Ground 1,278 Latitude (if Known)
 OPERATOR NAME CHESAPEAKE OPERATING, L.L.C. ADDRESS P.O. BOX 18496
 CITY OKLAHOMA CITY STATE OK ZIP 73154

COMPLETION TYPE
 SINGLE ZONE
 MULTIPLE ZONE Application Date
 COMMINGLED Application Date
 LOCATION EXCEPTION ORDER NO. 639191 (INTERIM)
 INCREASED DENSITY ORDER NO. 639190

CASING & CEMENT (Form 1002C must be attached)

TYPE	SIZE	WEIGHT	GRADE	FEET	PSI	SAX	TOP	
CONDUCTOR								
SURFACE	13 3/8"	48#	J-55	523		460	SURFACE	
INTERMEDIATE	9 5/8"	36#	J-55	1,202		360	SURFACE	
PRODUCTION	7"	26#	P-110EC	5,704		230	3,315	
LINER	4 1/2"	11.6#	P-110EC	5,479-10,533		440	5,479	
							TOTAL DEPTH	10,535

PACKER @ N/A BRAND & TYPE
 PLUG @ TYPE

COMPLETION & TEST DATA BY PRODUCING FORMATION

FORMATION	SPACING & SPACING ORDER NUMBER	CLASS: Oil, Gas, Dry, Inj. Disp, Comm Disp, Svc	PERFORATED INTERVALS	ACID/VOLUME	FRACTURE TREATMENT (Fluids/Prop Amounts)
		Temporarily Abandoned			

AS SUBMITTED

Minimum Gas Allowable (165:10-17-7) OR Oil Allowable (165:10-13-3)
 Gas Purchaser/Measurer _____
 1st Sales Date _____

INITIAL TEST DATA

INITIAL TEST DATE	N/A
OIL-BBL/DAY	
OIL-GRAVITY (API)	
GAS-MCF/DAY	
GAS-OIL RATIO CU FT/BBL	
WATER-BBL/DAY	
PUMPING OR FLOWING	
INITIAL SHUT-IN PRESSURE	
CHOKE SIZE	
FLOW TUBING PRESSURE	

A record of the formations drilled through, and pertinent remarks are presented on the reverse. I declare that I have knowledge of the contents of this report and am authorized by my organization to make this report, which was prepared by me or under my supervision and direction, with the data and facts stated herein to be true, correct, and complete to the best of my knowledge and belief.

Sara Everett
 SIGNATURE NAME (PRINT OR TYPE) Sara Everett, Regulatory Analyst
 P.O. BOX 18496 OKLAHOMA CITY OK 73154
 ADDRESS CITY STATE ZIP
 5/20/2016 DATE
 405-848-8000 PHONE NUMBER
 sara.everett@chk.com EMAIL ADDRESS

PLEASE TYPE OR USE BLACK INK ONLY
FORMATION RECORD

Give formation names and tops, if available, or descriptions and thickness of formations drilled through. Show intervals cored or drillstem tested.

LEASE NAME KLETKE 18-27-12

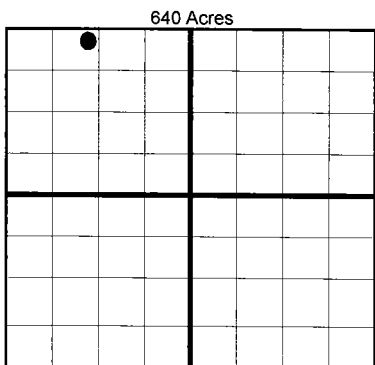
WELL NO. 1H

NAMES OF FORMATIONS	TOP
MISSISSIPPIAN	5,350

FOR COMMISSION USE ONLY	
ITD on file <input type="checkbox"/> YES <input type="checkbox"/> NO	
APPROVED _____ DISAPPROVED _____	2) Reject Codes

Were open hole logs run? _____ yes <input checked="" type="checkbox"/> no
Date Last log was run <u>N/A</u>
Was CO ₂ encountered? _____ yes <input checked="" type="checkbox"/> no at what depths?
Was H ₂ S encountered? _____ yes <input checked="" type="checkbox"/> no at what depths?
Were unusual drilling circumstances encountered? _____ yes <input checked="" type="checkbox"/> no If yes, briefly explain.

Other remarks: *WAITING ON COMPLETION



BOTTOM HOLE LOCATION FOR DIRECTIONAL HOLE

SEC	TWP	RGE	COUNTY			
Spot Location	1/4	1/4	1/4	Feet From 1/4 Sec Lines	FSL	FWL
Measured Total Depth	True Vertical Depth		BHL From Lease, Unit, or Property Line:			

BOTTOM HOLE LOCATION FOR HORIZONTAL HOLE: (LATERALS)

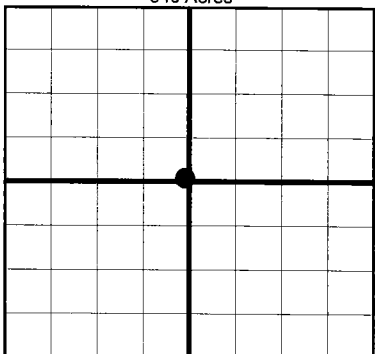
LATERAL #1

SEC	TWP	RGE	COUNTY					
18	27N	12W	ALFALFA					
Spot Location	NE 1/4	NE 1/4	NW 1/4	NW 1/4	Feet From 1/4 Sec Lines	FNL 164	FWL 1,052	
Depth of Deviation	4,990		Radius of Turn	403	Direction	352	Total Length	5,185
Measured Total Depth	10,535		True Vertical Depth	5,393		BHL From Lease, Unit, or Property Line: 164		

If more than three drainholes are proposed, attach a separate sheet indicating the necessary information.

Direction must be stated in degrees azimuth. Please note, the horizontal drainhole and its end point must be located within the boundaries of the lease or spacing unit.

Directional surveys are required for all drainholes and directional wells.
640 Acres



LATERAL #2

SEC	TWP	RGE	COUNTY				
Spot Location	1/4	1/4	1/4	1/4	Feet From 1/4 Sec Lines	FSL	FWL
Depth of Deviation	Radius of Turn		Direction		Total Length		
Measured Total Depth	True Vertical Depth		BHL From Lease, Unit, or Property Line:				

LATERAL #3

SEC	TWP	RGE	COUNTY				
Spot Location	1/4	1/4	1/4	Feet From 1/4 Sec Lines	FSL	FWL	
Depth of Deviation	Radius of Turn		Direction		Total Length		
Measured Total Depth	True Vertical Depth		BHL From Lease, Unit, or Property Line:				