

Oklahoma Corporation Commission
Oil & Gas Conservation Division
Post Office Box 52000
Oklahoma City, Oklahoma 73152-2000
Rule 165: 10-3-25

Form 1002A

API No.: 35047248200000

Completion Report

Spud Date: March 30, 2014

OTC Prod. Unit No.: 047-217273

Drilling Finished Date: November 17, 2015

1st Prod Date: February 24, 2016

Completion Date: February 07, 2016

Drill Type: HORIZONTAL HOLE

Min Gas Allowable: Yes

Well Name: JACKRABBIT 1-18H

Purchaser/Measurer: MUSTANG GAS

Location: GARFIELD 19 21N 8W
NW NW NW NE
250 FNL 2391 FEL of 1/4 SEC
Latitude: 36.288615 Longitude: 98.094424
Derrick Elevation: 24 Ground Elevation: 1225

First Sales Date:

Operator: U S ENERGY DEVELOPMENT CORPORATION 23402

2350 N FOREST RD
GETZVILLE, NY 14068-1296

Completion Type	
X	Single Zone
	Multiple Zone
	Commingled

Location Exception
Order No
623416

Increased Density
Order No
There are no Increased Density records to display.

Casing and Cement							
Type	Size	Weight	Grade	Feet	PSI	SAX	Top of CMT
CONDUCTOR	20	94	F-25	80			
SURFACE	9 5/8	36	K-55	515	150	240	SURFACE
PRODUCTION	7	26	P-110	7315	400	290	5251

Liner								
Type	Size	Weight	Grade	Length	PSI	SAX	Top Depth	Bottom Depth
LINER	4.5	11.6	P-110	4903	0	0	7236	12139

Total Depth: 12139

Packer	
Depth	Brand & Type
There are no Packer records to display.	

Plug	
Depth	Plug Type
There are no Plug records to display.	

Initial Test Data										
Test Date	Formation	Oil BBL/Day	Oil-Gravity (API)	Gas MCF/Day	Gas-Oil Ratio Cu FT/BBL	Water BBL/Day	Pumpin or Flowing	Initial Shut-In Pressure	Choke Size	Flow Tubing Pressure
Feb 26, 2016	MISSISSIPPIAN	75	38			1440	JET PUMP	50		

Completion and Test Data by Producing Formation			
Formation Name: MISSISSIPPIAN	Code: 359MSSP	Class: OIL	
Spacing Orders		Perforated Intervals	
Order No	Unit Size	From To	
121486	640	There are no Perf. Intervals records to display.	
Acid Volumes		Fracture Treatments	
45,486 GALLONS		3,451580 POUNDS, 140,634 BARRELS	

Formation	Top
VERDIGRIS LIME	6501
PINK LIME	6597
INOLA LIME	6706
CHESTER	6780
MISSISSIPPI CHAT	6955
MISSISSIPPI	7073

Were open hole logs run? No

Date last log run:

Were unusual drilling circumstances encountered? No

Explanation:

Other Remarks
OPEN HOLE LINER SYSTEM. LINER SET @ 7,236'. OCC - THIS WELL IS AN OPEN HOLE COMPLETION FROM BOTTOM OF THE 7" CASING AT 7,315' TO TERMINUS AT 12,139'. THE 4 1/2" LINER WAS NOT CEMENTED. THIS DOCUMENT IS ACCEPTED BASED ON THE DATA SUBMITTED THE FINAL LOCATION EXCEPTION HAS NOT BEEN ISSUED.

Lateral Holes

Sec: 18 TWP: 21N RGE: 8W County: GARFIELD

NW NW NW NE

205 FNL 2404 FEL of 1/4 SEC

Depth of Deviation: 6455 Radius of Turn: 660 Direction: 360 Total Length: 4822

Measured Total Depth: 12139 True Vertical Depth: 7052 End Pt. Location From Release, Unit or Property Line: 205

FOR COMMISSION USE ONLY

1133635

Status: Accepted

RECEIVED

Form 1002A Rev. 2009

MAR 21 2016

OKLAHOMA CORPORATION COMMISSION

API NO. 3504724820
OTC PROD. UNIT NO. 047217273

PLEASE TYPE OR USE BLACK INK ONLY
NOTE:

Attach copy of original 1002A if recompletion or reentry.

OKLAHOMA CORPORATION COMMISSION
Oil & Gas Conservation Division
Post Office Box 52000
Oklahoma City, Oklahoma 73152-2000
Rule 165:10-3-25

ORIGINAL
AMENDED (Reason)

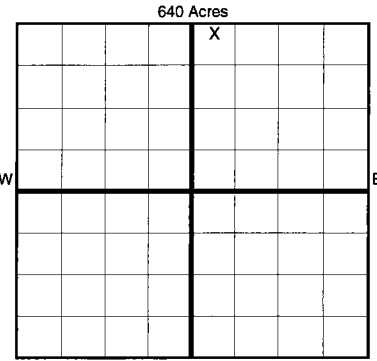
COMPLETION REPORT

TYPE OF DRILLING OPERATION

STRAIGHT HOLE
SERVICE WELL
DIRECTIONAL HOLE
HORIZONTAL HOLE

If directional or horizontal, see reverse for bottom hole location.

Form with fields: COUNTY (Garfield), SEC (19), TWP (21N), RGE (8W), LEASE NAME (Jackrabbit), WELL NO. (1-18H), SPUD DATE (3/30/14), DRLG FINISHED DATE (11/17/15), DATE OF WELL COMPLETION (2/7/16), 1st PROD DATE (2/24/16), RECOMP DATE, OPERATOR NAME (U.S. Energy Development Corp), ADDRESS (2350 North Forest Road), CITY (Getzville), STATE (NY), ZIP (14068)



COMPLETION TYPE

Form with fields: SINGLE ZONE (checked), MULTIPLE ZONE, COMMINGLED, LOCATION, EXCEPTION ORDER, INCREASED DENSITY ORDER NO.

CASING & CEMENT (Form 1002C must be attached)

Table with columns: TYPE, SIZE, WEIGHT, GRADE, FEET, PSI, SAX, TOP OF CMT. Rows include CONDUCTOR, SURFACE, INTERMEDIATE, PRODUCTION, LINER.

PACKER @ BRAND & TYPE PLUG @ TYPE PLUG @ TYPE PLUG @ TYPE

TOTAL DEPTH 12,139

COMPLETION & TEST DATA BY PRODUCING FORMATION 359MSSP

Table with columns: FORMATION, SPACING & SPACING ORDER NUMBER, CLASS, PERFORATED INTERVALS, ACID/VOLUME, FRACTURE TREATMENT. Includes handwritten notes like 'Mississippian', '121486 (640)', 'Oil', 'open hole', '7315-12137', 'gal', 'lbs', 'bbl'.

AS SUBMITTED

Monitor Report to For Focus

Min Gas Allowable (165:10-17-7) OR Oil Allowable (165:10-13-3)

Gas Purchaser/Measurer First Sales Date

Mustang Gas n/a

INITIAL TEST DATA

Table with columns: INITIAL TEST DATE, OIL-BBL/DAY, OIL-GRAVITY (API), GAS-MCF/DAY, GAS-OIL RATIO CU FT/BBL, WATER-BBL/DAY, PUMPING OR FLOWING, INITIAL SHUT-IN PRESSURE, CHOKE SIZE, FLOW TUBING PRESSURE.

A record of the formations drilled through, and pertinent remarks are presented on the reverse. I declare that I have knowledge of the contents of this report and am authorized by my organization to make this report, which was prepared by me or under my supervision and direction, with the data and facts stated herein to be true, correct, and complete to the best of my knowledge and belief.
Signature: Todd C. witmer
Address: 1521 N Cooper Street, Arlington, TX 76011
Date: 3/15/2016, Phone: (716) 636-0401
Email: twitmer@usedc.com

see survey

PLEASE TYPE OR USE BLACK INK ONLY
FORMATION RECORD

Give formation names and tops, if available, or descriptions and thickness of formations drilled through. Show intervals cored or drillstem tested.

LEASE NAME Jackrabbit WELL NO. 1-18H

NAMES OF FORMATIONS	TOP
Verdigris Lime	6,501
Pink Lime	6,597
Inola Lime	6706
Chester	6,780
Miss Chat	6,955
Miss	7,073

FOR COMMISSION USE ONLY

ITD on file YES NO

APPROVED _____ DISAPPROVED _____

2) Reject Codes _____

Were open hole logs run? yes no

Date Last log was run _____

Was CO₂ encountered? yes no at what depths? _____

Was H₂S encountered? yes no at what depths? _____

Were unusual drilling circumstances encountered? yes no
 If yes, briefly explain below _____

Other remarks: Open-hole liner system. Liner set @ 7,236' OCC - This well is an open hole completion from bottom of the 7" casing at 7315' to terminus at 12139'. The 4 1/2" liner was not cemented.

640 Acres

				X			

If more than three drainholes are proposed, attach a separate sheet indicating the necessary information.

Direction must be stated in degrees azimuth. Please note, the horizontal drainhole and its end point must be located within the boundaries of the lease or spacing unit.

Directional surveys are required for all drainholes and directional wells.

640 Acres

BOTTOM HOLE LOCATION FOR DIRECTIONAL HOLE

SEC	TWP	RGE	COUNTY	Spot Location		Feet From 1/4 Sec Lines	FSL	FWL
				1/4	1/4			
						Measured Total Depth	True Vertical Depth	BHL From Lease, Unit, or Property Line:

BOTTOM HOLE LOCATION FOR HORIZONTAL HOLE: (LATERALS)

LATERAL #1

SEC	TWP	RGE	COUNTY	Spot Location		Feet From 1/4 Sec Lines	FNL	FEL
18	21N	8W	Garfield	NW	NE		205	2404
				1/4	1/4			
						Depth of Deviation	Radius of Turn	Direction
						6,455	660	360
						Measured Total Depth	True Vertical Depth	Total Length
						12,139	7,052	4,822
								BHL From Lease, Unit, or Property Line:
								205 FNL 2404 FEL

LATERAL #2

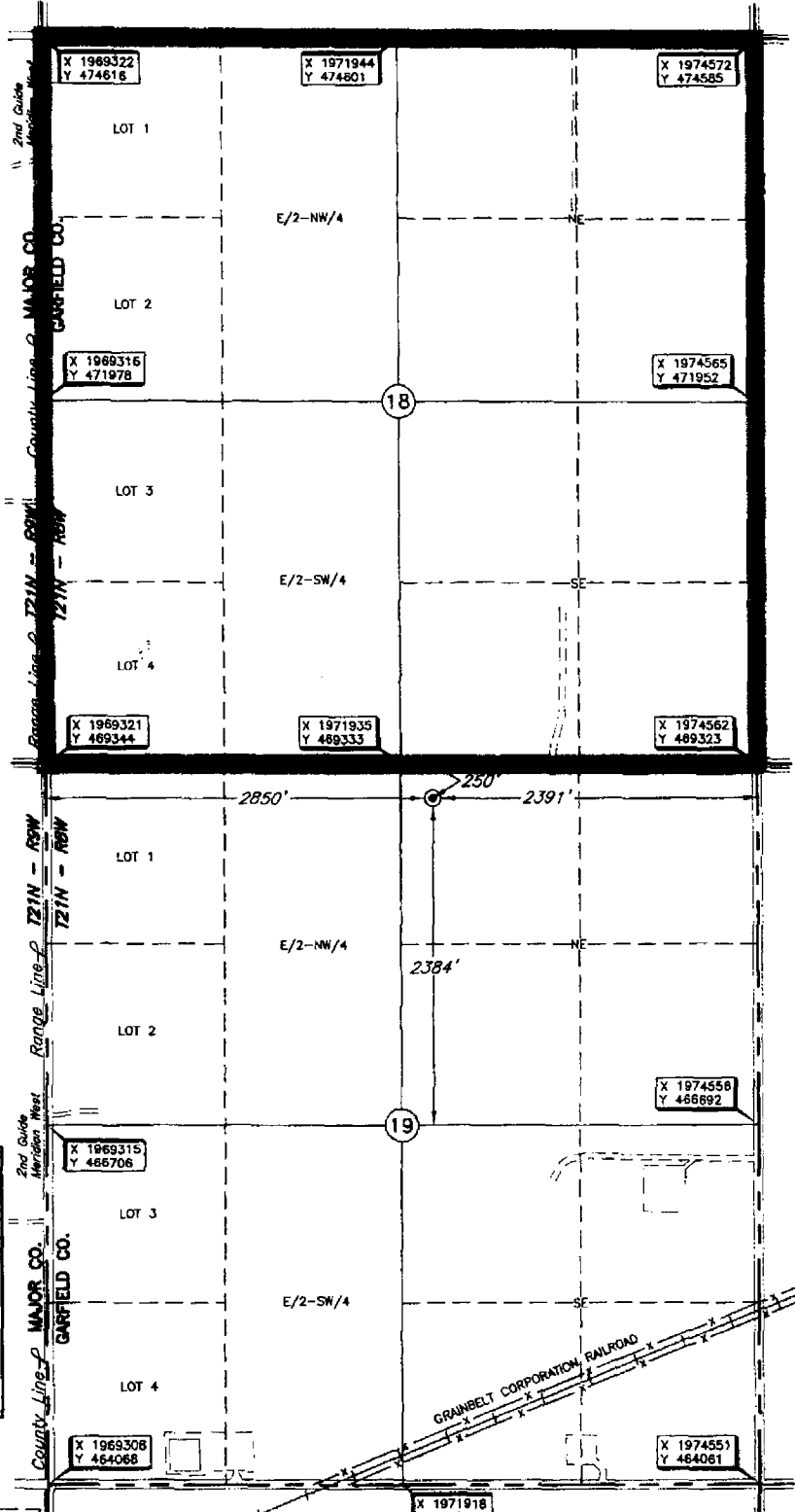
SEC	TWP	RGE	COUNTY	Spot Location		Feet From 1/4 Sec Lines	FSL	FWL
				1/4	1/4			
						Depth of Deviation	Radius of Turn	Direction
						Measured Total Depth	True Vertical Depth	Total Length
								BHL From Lease, Unit, or Property Line:

LATERAL #3

SEC	TWP	RGE	COUNTY	Spot Location		Feet From 1/4 Sec Lines	FSL	FWL
				1/4	1/4			
						Depth of Deviation	Radius of Turn	Direction
						Measured Total Depth	True Vertical Depth	Total Length
								BHL From Lease, Unit, or Property Line:

TOPOGRAPHIC LAND SURVEYORS OF OKLAHOMA
 6709 NORTH CLASSEN BLVD., OKLA. CITY, OKLA. 73118 * LOCAL (405) 843-4847 * OUT OF STATE (800) 854-3219
 Certificate of Authorization No. 1283.

GARFIELD County, Oklahoma
 250' FNL - 2850' FWL Section 19 Township 21N Range 8W I.M.



Operator: US ENERGY DEVELOPMENT CORP.
 Lease Name: JACKRABBIT
 Topography & Vegetation Loc. fell in wheat field
 Good Drill Site? Yes
 Best Accessibility to Location From North of county road
 Distance & Direction From Drummond, Oklahoma, go ± 3 miles West, ± 1 mile South, then ± 0.5 mile West to the North Quarter Corner of Section 19, 21N - 8W.
 Reference Stakes or Alternate Location Stakes Set None
 Well No.: 1-18H
ELEVATION:
1225' Gr. at Stake

THE INFORMATION SHOWN HEREIN IS FOR CONSTRUCTION PURPOSES ONLY

DATUM: NAD-27
 LAT: 36°17'19.0" N
 LONG: 98°05'39.9" W
 LAT: 36.288613489° N
 LONG: 98.094427442° W
 STATE PLANE COORDINATES (US FEET):
 ZONE: OK NORTH
 X: 1972171
 Y: 469082

Invoice # 218360 Date of Drawing: Mar. 18, 2014
 Date Staked: Mar. 17, 2014 NMB

CERTIFICATE:
 I, Lee K. Goss a Oklahoma Licensed Land Surveyor and an authorized agent of Topographic Land Surveyors of Oklahoma, do hereby certify to the information shown herein.
Lee K. Goss
 Oklahoma Lic. No. 1778

