

Oklahoma Corporation Commission
Oil & Gas Conservation Division
Post Office Box 52000
Oklahoma City, Oklahoma 73152-2000
Rule 165: 10-3-25

Form 1002A

API No.: 35137251410001

Completion Report

Spud Date: June 05, 1993

OTC Prod. Unit No.:

Drilling Finished Date: June 21, 1993

Amended

1st Prod Date: July 20, 1993

Amend Reason: TEMPORARILY SHUT IN WELL

Completion Date: August 13, 1993

Recomplete Date: May 23, 2016

Drill Type: STRAIGHT HOLE

Well Name: NAPU (NORTH ALMA PENN UNIT 129) 129

Purchaser/Measurer:

Location: STEPHENS 9 1S 4W
S2 NE NE NW
2210 FSL 2310 FWL of 1/4 SEC
Derrick Elevation: 0 Ground Elevation: 0

First Sales Date:

Operator: MACK ENERGY CO 11739
PO BOX 400
1202 N 10TH ST
DUNCAN, OK 73534-0400

Completion Type	
X	Single Zone
	Multiple Zone
	Commingled

Location Exception
Order No
There are no Location Exception records to display.

Increased Density
Order No
There are no Increased Density records to display.

Casing and Cement							
Type	Size	Weight	Grade	Feet	PSI	SAX	Top of CMT
CONDUCTOR	16			44		8	SURFACE
SURFACE	9 5/8	36	J-55	1120		665	SURFACE
PRODUCTION	5 1/2	15.50	J-55	5720		600	4256

Liner								
Type	Size	Weight	Grade	Length	PSI	SAX	Top Depth	Bottom Depth
There are no Liner records to display.								

Total Depth: 5720

Packer	
Depth	Brand & Type
There are no Packer records to display.	

Plug	
Depth	Plug Type
5316	CIBP

Initial Test Data										
Test Date	Formation	Oil BBL/Day	Oil-Gravity (API)	Gas MCF/Day	Gas-Oil Ratio Cu FT/BBL	Water BBL/Day	Pumpin or Flowing	Initial Shut-In Pressure	Choke Size	Flow Tubing Pressure
There are no Initial Data records to display.										

Completion and Test Data by Producing Formation														
Formation Name: PENN SD	Code: 409PVSD	Class: TA												
<table border="1"> <thead> <tr> <th colspan="2">Spacing Orders</th> </tr> <tr> <th>Order No</th> <th>Unit Size</th> </tr> </thead> <tbody> <tr> <td>78411</td> <td>UNIT</td> </tr> </tbody> </table>		Spacing Orders		Order No	Unit Size	78411	UNIT	<table border="1"> <thead> <tr> <th colspan="2">Perforated Intervals</th> </tr> <tr> <th>From</th> <th>To</th> </tr> </thead> <tbody> <tr> <td>5366</td> <td>5625</td> </tr> </tbody> </table>	Perforated Intervals		From	To	5366	5625
Spacing Orders														
Order No	Unit Size													
78411	UNIT													
Perforated Intervals														
From	To													
5366	5625													
<table border="1"> <thead> <tr> <th colspan="1">Acid Volumes</th> </tr> </thead> <tbody> <tr> <td>There are no Acid Volume records to display.</td> </tr> </tbody> </table>		Acid Volumes	There are no Acid Volume records to display.	<table border="1"> <thead> <tr> <th colspan="1">Fracture Treatments</th> </tr> </thead> <tbody> <tr> <td>14,200 GALLONS GEL WATER, 389 BARRELS LEASE WATER</td> </tr> </tbody> </table>	Fracture Treatments	14,200 GALLONS GEL WATER, 389 BARRELS LEASE WATER								
Acid Volumes														
There are no Acid Volume records to display.														
Fracture Treatments														
14,200 GALLONS GEL WATER, 389 BARRELS LEASE WATER														

Formation	Top
TUSSY LIME	4402
EDWARDS	4717
WILLIAMS	4826
PICKENS	4959
SPRINGER	5083
HUMPHREYS	5139
1ST SIMS	5353
2ND SIMS	5413
3RD SIMS	5580
GOODWIN	5710

Were open hole logs run? Yes
Date last log run: June 21, 1993

Were unusual drilling circumstances encountered? No
Explanation:

Other Remarks
OCC - WELL NAME FORMERLY NORTH ALMA PENN UNIT 129

FOR COMMISSION USE ONLY	
Status: Accepted	1133626

RECEIVED

MAY 23 2016

Form 1002A Rev. 2009

OKLAHOMA CORPORATION COMMISSION

API NO. 137-25141

PLEASE TYPE OR USE BLACK INK ONLY NOTE:

Attach copy of original 1002A if recompletion or reentry.

OKLAHOMA CORPORATION COMMISSION Oil & Gas Conservation Division Post Office Box 52000 Oklahoma City, Oklahoma 73152-2000 Rule 165-10-3-25

ORIGINAL AMENDED (Reason)

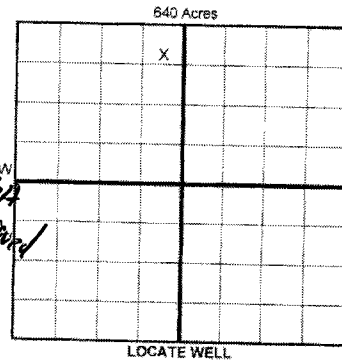
Temporary Shut In Well

COMPLETION REPORT

TYPE OF DRILLING OPERATION STRAIGHT HOLE SERVICE WELL DIRECTIONAL HOLE HORIZONTAL HOLE

SPUD DATE 6/5/93 DRLG FINISHED DATE 6/21/93 DATE OF WELL COMPLETION 8/13/93 1st PROD DATE 7/20/93 RECOMP DATE 5-23-2016

COUNTY Stephens SEC 9 TWP 1S RGE 4W LEASE NAME NAPU WELL NO 129 FSL OF 1/4 SEC 2210' FWL OF 1/4 SEC 2310' OPERATOR NAME Mack Energy Co. ADDRESS P.O. Box 400 CITY Duncan STATE OK ZIP 73534



COMPLETION TYPE SINGLE ZONE MULTIPLE ZONE LOCATION EXCEPTION ORDER NO. INCREASED DENSITY ORDER NO.

Table with columns: TYPE, SIZE, WEIGHT, GRADE, FEET, PSI, SAX, TOP OF CMT. Rows include CONDUCTOR, SURFACE, INTERMEDIATE, PRODUCTION, LINER.

PACKER @ BRAND & TYPE PLUG @ 5316' TYPE CIBP PLUG @ TYPE TOTAL DEPTH 5,720

COMPLETION & TEST DATA BY PRODUCING FORMATION

Table with columns: FORMATION, SPACING & SPACING, ORDER NUMBER, CLASS, PERFORATED INTERVALS, ACID/VOLUME, FRACTURE TREATMENT.

AS SUBMITTED

Min Gas Allowable OR Oil Allowable Gas Purchaser/Measurer First Sales Date

INITIAL TEST DATA

Table with columns: INITIAL TEST DATE, OIL-BBL/DAY, OIL-GRAVITY (API), GAS-MCF/DAY, GAS-OIL RATIO CU FT/BBL, WATER-BBL/DAY, PUMPING OR FLOWING, INITIAL SHUT-IN PRESSURE, CHOKE SIZE, FLOW TUBING PRESSURE.

RECEIVED

MAY 19 2016

OKLAHOMA CORPORATION COMMISSION DUNCAN OFFICE

A record of the formations drilled through, and pertinent remarks are presented on the reverse. I declare that I have knowledge of the contents of this report and am authorized by my organization to make this report...

SIGNATURE Mike LaMascus DATE 5/10/2016 PHONE NUMBER 580.856.3705 ADDRESS P.O. Box 400 CITY Duncan STATE OK ZIP 73534 EMAIL ADDRESS mlamascus@mackenergy.com

