

Oklahoma Corporation Commission  
Oil & Gas Conservation Division  
Post Office Box 52000  
Oklahoma City, Oklahoma 73152-2000  
Rule 165: 10-3-25

Form 1002A

API No.: 35073252120000

**Completion Report**

Spud Date: November 23, 2015

OTC Prod. Unit No.: 073-21722

Drilling Finished Date: January 03, 2016

1st Prod Date: February 17, 2016

Completion Date: February 04, 2016

**Drill Type: HORIZONTAL HOLE**

Min Gas Allowable: Yes

Well Name: LANKARD 1H-16

Purchaser/Measurer: NEWFIELD

Location: KINGFISHER 16 15N 6W  
SW SE SW SW  
290 FSL 810 FWL of 1/4 SEC  
Latitude: 35.77026 Longitude: -97.84905  
Derrick Elevation: 1187 Ground Elevation: 1164

First Sales Date: 02/17/2016

Operator: NEWFIELD EXPLORATION MID-CON INC 20944

1 WILLIAMS CTR STE 1900  
TULSA, OK 74172-0162

Completion Type	
X	Single Zone
	Multiple Zone
	Commingled

Location Exception	
Order No	
	649053
	647531

Increased Density	
Order No	
There are no Increased Density records to display.	

Casing and Cement							
Type	Size	Weight	Grade	Feet	PSI	SAX	Top of CMT
SURFACE	9 5/8	40	J-55	1505	960	395	SURFACE
PRODUCTION	5 1/2	20	P-110	12694	1900	1450	12116

Liner								
Type	Size	Weight	Grade	Length	PSI	SAX	Top Depth	Bottom Depth
There are no Liner records to display.								

**Total Depth: 12714**

Packer	
Depth	Brand & Type
There are no Packer records to display.	

Plug	
Depth	Plug Type
There are no Plug records to display.	

Initial Test Data										
Test Date	Formation	Oil BBL/Day	Oil-Gravity (API)	Gas MCF/Day	Gas-Oil Ratio Cu FT/BBL	Water BBL/Day	Pumpin or Flowing	Initial Shut-In Pressure	Choke Size	Flow Tubing Pressure
Mar 07, 2016	MISSISSIPPIAN	303	43	378	1248	441	FLOWING	800	64	90

Completion and Test Data by Producing Formation										
Formation Name: MISSISSIPPIAN			Code: 359MSSP			Class: OIL				
<b>Spacing Orders</b>				<b>Perforated Intervals</b>						
<b>Order No</b>	<b>Unit Size</b>			<b>From</b>			<b>To</b>			
648235	640			7826			12551			
<b>Acid Volumes</b>				<b>Fracture Treatments</b>						
13,500 GALLONS 15% HCL				7,114,140 PROPPANT						
				4,559 VLWTR						

Formation	Top
MISSISSIPPIAN	7657
CHESTER	7588
ATOKA	7530

Were open hole logs run? No

Date last log run:

Were unusual drilling circumstances encountered? No

Explanation:

Other Remarks
OCC: FLE ORDER HAS NOT BEEN ISSUED. WE HAVE ACCEPTED OPERATORS DATA AS SUBMITTED. IRREGULAR SECTION.

Lateral Holes
Sec: 16 TWP: 15N RGE: 6W County: KINGFISHER
NE NW NW NW
39 FNL 446 FWL of 1/4 SEC
Depth of Deviation: 4515 Radius of Turn: 7028 Direction: 360 Total Length: 5280
Measured Total Depth: 12714 True Vertical Depth: 7528 End Pt. Location From Release, Unit or Property Line: 39

FOR COMMISSION USE ONLY
Status: Accepted
1132743

# Well Location Plat

M & M Land Surveying, Inc.

520 "E" Street NW. Ardmore, OK. 73401

Office 580-226-0446 Mobile 580-221-4999 Fax 580-226-7158

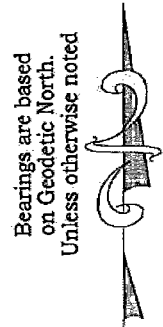
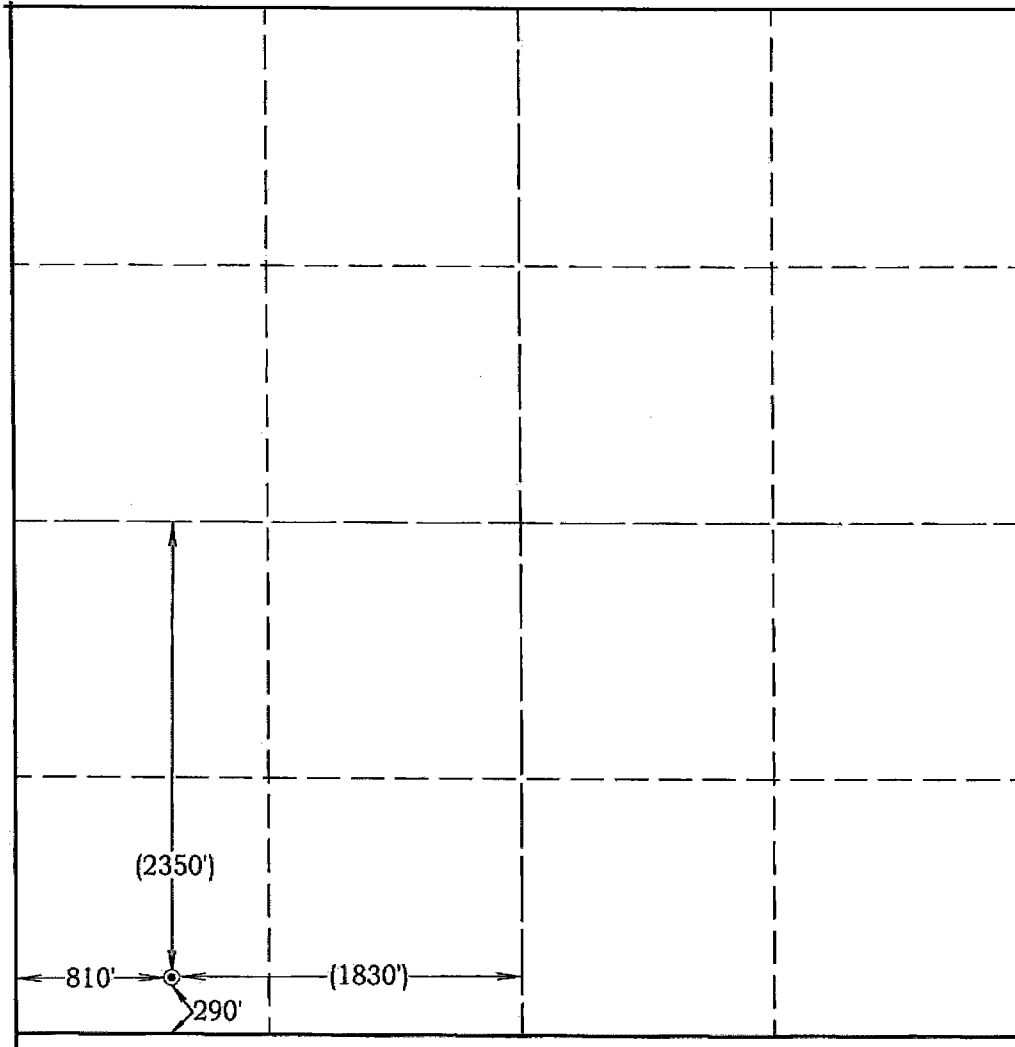
Company Name: Newfield Exploration Mid-Continent, Inc. Lease Name: Lankard #1H-16

Section 16 Township 15 North Range 6 West County Kingfisher Oklahoma

Surface Location 290' FSL - 810' FWL Elevation 1164' Good Location? Yes

Topography

Location pad under  
construction, 255' North  
of fence.



Scale: 1" = 1000'  
Invoice #15415  
Date 10/8/15

Elevations of Proposed  
Pad Corners

NW/C - N/A  
NE/C - N/A  
SE/C - N/A  
SW/C - N/A

**Coordinates were derived  
from GPS RTK methods  
and are only accurate  
within ±10 feet**

**Location GPS NAD 27  
Oklahoma North  
Surface Location**

Latitude: 35.77021°  
Longitude: 97.84872°  
Y= 280,398'  
X = 2,044,880'

**Location NAD 83  
Surface Location**

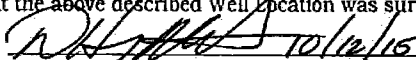
Latitude: 35.77026°  
Longitude: 97.84905°  
Y= 280,422'  
X = 2,013,281'

Best Accessibility to Location  
From the South

Distance & Direction From From the Jct. of U.S. #81 and S.H. #33, go 4.5 miles East on S.H. #33, then 6 miles South, on county roads to the Southwest corner of section 16.  
Highway or Town \_\_\_\_\_

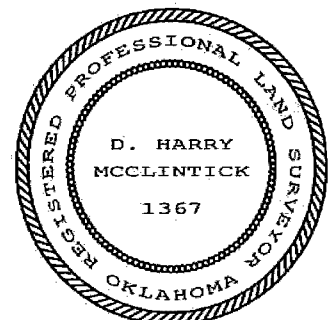
### CERTIFICATE:

I, D. Harry McClintick, a Registered Land Surveyor in the state of Oklahoma, do hereby certify that the above described Well Location was surveyed and staked on the ground as shown.

  
D. Harry McClintick, R.P.L.S. # 1367, CA # 3093

This location has been staked according to the best official survey records available to us, but its accuracy is not guaranteed. Please review this plat and notify us immediately of any discrepancy.

The distances shown in parenthesis ( ) are calculated distances based on the quarter section being 2640' and have not been measured.



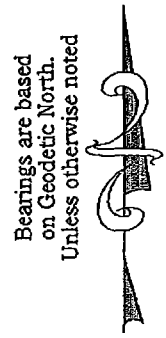
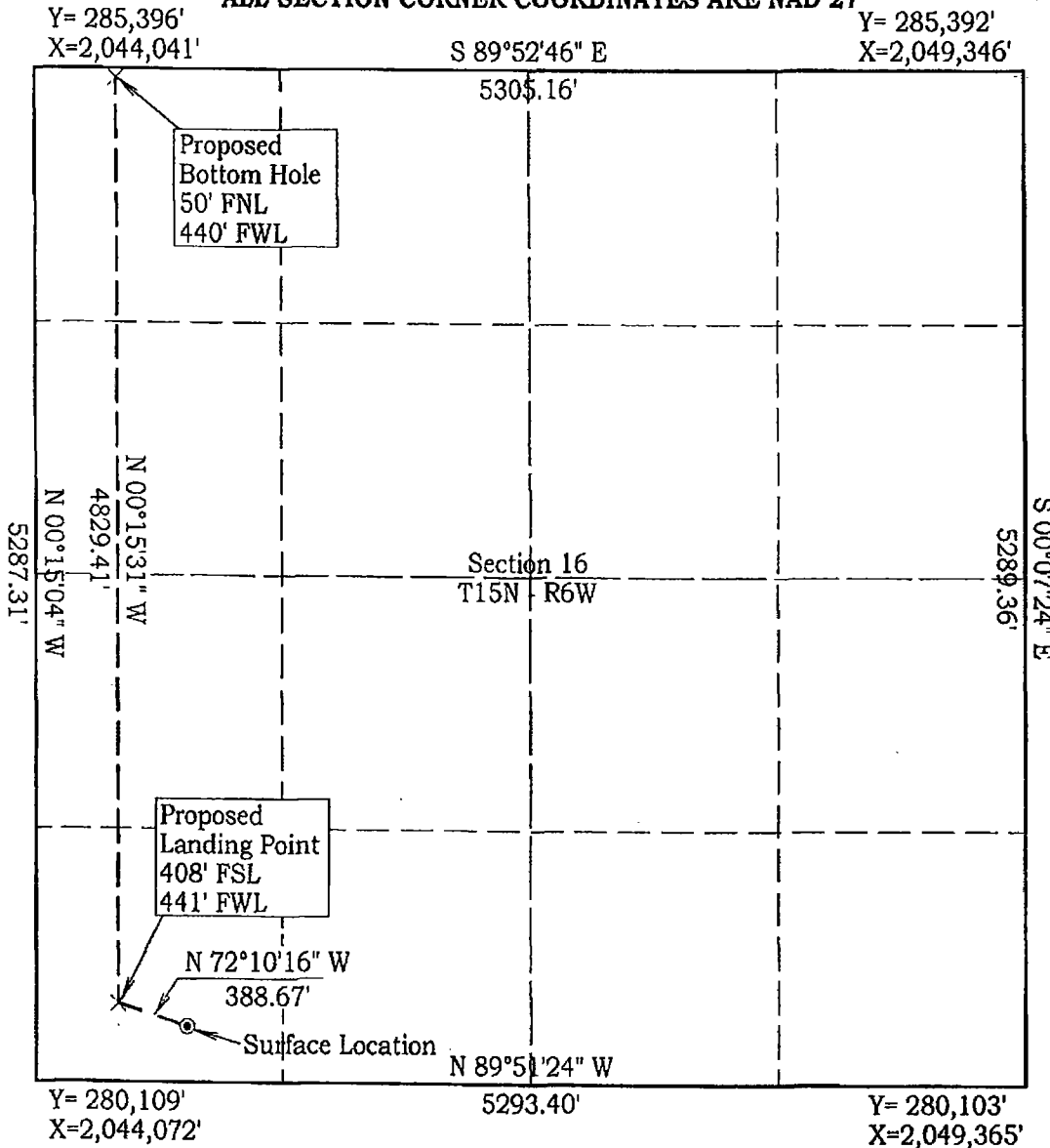
# Permit Plat

## M & M Land Surveying, Inc.

520 "E" Street NW. Ardmore, OK. 73401  
Office 580-226-0446 Mobile 580-221-4999 Fax 580-226-7158

Company Name: Newfield Exploration Mid-Continent, Inc. Lease Name: Lankard #1H-16  
Section 16 Township 15 North Range 6 West County Kingfisher Oklahoma  
Surface Location 290' FSL - 810' FWL Elevation 1164'

**ALL SECTION CORNER COORDINATES ARE NAD 27**



Scale: 1" = 1000'  
Invoice #15415  
Date 10/8/15

Coordinates were derived from GPS RTK methods and are only accurate within ±10 feet

Location GPS NAD 27  
Oklahoma North  
Surface Location  
Latitude: 35.77021°  
Longitude: 97.84872°  
Y= 280,398'  
X= 2,044,880'

Location NAD 83  
Surface Location  
Latitude: 35.77026°  
Longitude: 97.84905°  
Y= 280,422'  
X= 2,013,281'

*D. Harry McClintick* 10/12/15  
D. Harry McClintick, R.P.L.S. # 1367, CA # 3093

This location has been staked according to the best official survey records available to us, but its accuracy is not guaranteed. Please review this plat and notify us immediately of any discrepancy.

