

Oklahoma Corporation Commission
 Oil & Gas Conservation Division
 Post Office Box 52000
 Oklahoma City, Oklahoma 73152-2000
 Rule 165: 10-3-25

Form 1002A

API No.: 35087220370000

Completion Report

Spud Date: December 08, 2015

OTC Prod. Unit No.: 087-217270

Drilling Finished Date: December 27, 2015

1st Prod Date: March 10, 2016

Completion Date: March 10, 2016

Drill Type: HORIZONTAL HOLE

Min Gas Allowable: Yes

Well Name: WATKINS 1H-9X

Purchaser/Measurer: NEWFIELD

Location: MCCLAIN 4 6N 4W
 NE SE SE SW
 650 FSL 2340 FWL of 1/4 SEC
 Latitude: 35.01699 Longitude: -97.62765
 Derrick Elevation: 1230 Ground Elevation: 1206

First Sales Date: 03/20/2016

Operator: NEWFIELD EXPLORATION MID-CON INC 20944

1 WILLIAMS CTR STE 1900
 TULSA, OK 74172-0162

Completion Type	
X	Single Zone
	Multiple Zone
	Commingled

Location Exception
Order No
649890

Increased Density
Order No
There are no Increased Density records to display.

Casing and Cement							
Type	Size	Weight	Grade	Feet	PSI	SAX	Top of CMT
CONDUCTOR	20	94	J-55	108		27	SURFACE
SURFACE	9 5/8	40	K-55	1521	1500	395	SURFACE
PRODUCTION	5 1/2	20	P-110	20873	4500	3210	903

Liner								
Type	Size	Weight	Grade	Length	PSI	SAX	Top Depth	Bottom Depth
There are no Liner records to display.								

Total Depth: 20873

Packer	
Depth	Brand & Type
There are no Packer records to display.	

Plug	
Depth	Plug Type
There are no Plug records to display.	

Initial Test Data										
Test Date	Formation	Oil BBL/Day	Oil-Gravity (API)	Gas MCF/Day	Gas-Oil Ratio Cu FT/BBL	Water BBL/Day	Pumpin or Flowing	Initial Shut-In Pressure	Choke Size	Flow Tubing Pressure
Mar 30, 2016	WOODFORD	458	44.3	104	227	415	FLOWING	800	14	

Completion and Test Data by Producing Formation										
Formation Name: WOODFORD			Code: 319WDFD			Class: OIL				
Spacing Orders				Perforated Intervals						
Order No	Unit Size			From			To			
637596	640			10868			20776			
648816	640									
649920	MULTIUNIT									
Acid Volumes				Fracture Treatments						
30,043 GALS 15% HCL				14,930,460 # PROPPANT 210,468 BLWTR						

Formation	Top
CANEY	10553
SYCAMORE	10639
WOODFORD	10755

Were open hole logs run? Yes
Date last log run: December 24, 2015
Were unusual drilling circumstances encountered? No
Explanation:

Other Remarks
OCC: FLE ORDER HAS NOT BEEN ISSUED. WE HAVE ACCEPTED OPERATORS DATA AS SUBMITTED. IRREGULAR SECTION.

Lateral Holes
Sec: 16 TWP: 6N RGE: 4W County: MCCLAIN NE SE SE SW 401 FSL 2626 FWL of 1/4 SEC Depth of Deviation: 10478 Radius of Turn: 950 Direction: 4 Total Length: 9898 Measured Total Depth: 20873 True Vertical Depth: 11059 End Pt. Location From Release, Unit or Property Line: 401

FOR COMMISSION USE ONLY
Status: Accepted
1133559

Well Location Plat

M & M Land Surveying, Inc.

520 "E" Street NW. Ardmore, OK. 73401

Office 580-226-0446 Mobile 580-221-4999 Fax 580-226-7158

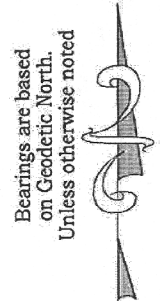
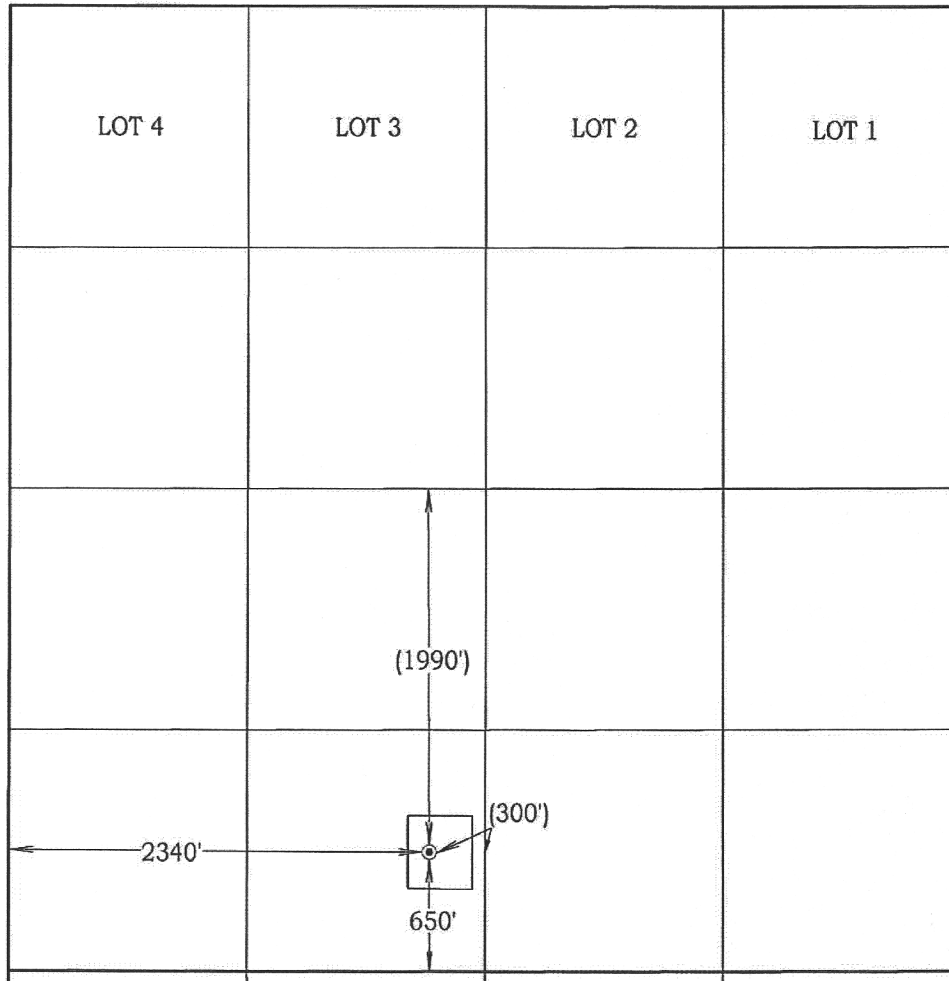
Company Name: Newfield Exploration Mid-Continent, Inc. Lease Name: Watkins #1H-9X

Section 4 Township 6 North Range 4 West County McClain Oklahoma

Surface Location 650' FSL - 2340' FWL Elevation 1206' Good Location? Yes

Topography

Location fell in terraced pasture, ±315' West of fence, ±400' East of pipeline.



Scale: 1" = 1000'
 Invoice #15451
 Date 11/18/15
 Elevations of Proposed Pad Corners
 NW/C - 1206'
 NE/C - 1204'
 SE/C - 1203'
 SW/C - 1194'

Coordinates were derived from GPS RTK methods and are only accurate within ±10 feet

Location GPS NAD 27
 Oklahoma South
 Surface Location
 Latitude: 35.01692°
 Longitude: 97.62733°
 Y= 612,892'
 X= 2,111,590'

Location NAD 83
 Surface Location
 Latitude: 35.01699°
 Longitude: 97.62765°
 Y= 612,934'
 X= 2,079,992'

Best Accessibility to Location
From the West

Distance & Direction From From the Jct. of S.H. #76 and S.H. #39, go 1.1 miles Southeast on S.H. #39, then 1.3 miles South on a county road to the Southwest corner of Section 4.
 Highway or Town _____

CERTIFICATE:

I, D. Harry McClintick, a Registered Land Surveyor in the state of Oklahoma, do hereby certify that the above described Well Location was surveyed and staked on the ground as shown.

[Signature]
 D. Harry McClintick, R.P.L.S. # 1367, CA # 3093

This location has been staked according to the best official survey records available to us, but its accuracy is not guaranteed. Please review this plat and notify us immediately of any discrepancy.

The distances shown in parenthesis () are calculated distances based on the quarter section being 2640' and have not been measured.



Permit Plat

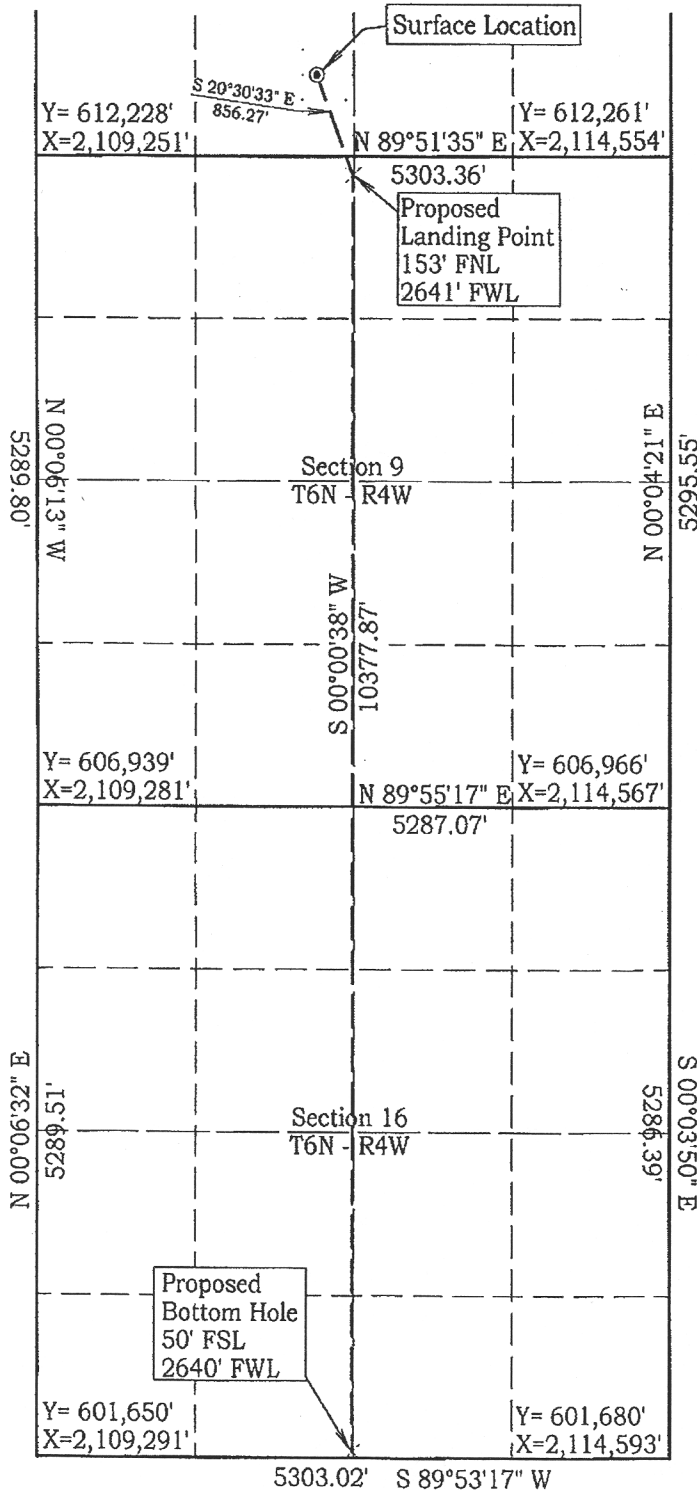
M & M Land Surveying, Inc.

520 "E" Street NW. Ardmore, OK. 73401
Office 580-226-0446 Mobile 580-221-4999 Fax 580-226-7158

4PT 087-22037

Company Name: Newfield Exploration Mid-Continent, Inc. Lease Name: Watkins #1H-9X
Section 4 Township 6 North Range 4 West County McClain Oklahoma
Surface Location 650' FSL - 2340' FWL Elevation 1206'

ALL SECTION CORNER COORDINATES ARE NAD 27



Bearings are based on Geodetic North. Unless otherwise noted



Scale: 1" = 1500'
Invoice #15451
Date 11/18/15
Elevations of Proposed Pad Corners
NW/C - N/A
NE/C - N/A
SE/C - N/A
SW/C - N/A

Coordinates were derived from GPS RTK methods and are only accurate within ±10 feet

Location GPS NAD 27
Oklahoma South
Surface Location
Latitude: 35.01692°
Longitude: 97.62733°
Y= 612,892'
X= 2,111,590'

Location NAD 83
Surface Location
Latitude: 35.01699°
Longitude: 97.62765°
Y= 612,934'
X= 2,079,992'

D. Harry McClintick 12/2/15

D. Harry McClintick, R.P.L.S. # 1367, CA # 3093

This location has been staked according to the best official survey records available to us, but its accuracy is not guaranteed. Please review this plat and notify us immediately of any discrepancy.

