

Oklahoma Corporation Commission
 Oil & Gas Conservation Division
 Post Office Box 52000
 Oklahoma City, Oklahoma 73152-2000
 Rule 165: 10-3-25

Form 1002A

API No.: 35051239980000

Completion Report

Spud Date: December 21, 2015

OTC Prod. Unit No.: 051-217339

Drilling Finished Date: March 05, 2016

1st Prod Date: April 05, 2016

Completion Date: April 05, 2016

Drill Type: HORIZONTAL HOLE

Min Gas Allowable: Yes

Well Name: DICKEY 1H-14

Purchaser/Measurer: NEWFIELD

Location: GRADY 23 3N 5W
 SE NW NW NE
 413 FNL 2158 FEL of 1/4 SEC
 Latitude: 34.72389 Longitude: -97.69325
 Derrick Elevation: 1238 Ground Elevation: 1215

First Sales Date: 04/05/2016

Operator: NEWFIELD EXPLORATION MID-CON INC 20944

1 WILLIAMS CTR STE 1900
 TULSA, OK 74172-0162

Completion Type	
X	Single Zone
	Multiple Zone
	Commingled

Location Exception
Order No
638018

Increased Density
Order No
There are no Increased Density records to display.

Casing and Cement							
Type	Size	Weight	Grade	Feet	PSI	SAX	Top of CMT
CONDUCTOR	20	94	J-55	103		27	SURFACE
SURFACE	13 3/8	54.5	J-55	1490		765	SURFACE
INTERMEDIATE	9 5/8	40	P-110	13003	1500	1810	SURFACE
PRODUCTION	5 1/2	20	P-110	18729		1720	11972

Liner								
Type	Size	Weight	Grade	Length	PSI	SAX	Top Depth	Bottom Depth
There are no Liner records to display.								

Total Depth: 18729

Packer	
Depth	Brand & Type
There are no Packer records to display.	

Plug	
Depth	Plug Type
18576	CIBP

Initial Test Data										
Test Date	Formation	Oil BBL/Day	Oil-Gravity (API)	Gas MCF/Day	Gas-Oil Ratio Cu FT/BBL	Water BBL/Day	Pumpin or Flowing	Initial Shut-In Pressure	Choke Size	Flow Tubing Pressure
Apr 19, 2016	SPRINGER	967	49.5	1241	1283	320	FLOWING	500	15	

Completion and Test Data by Producing Formation																
Formation Name: SPRINGER	Code: 401SPRG	Class: OIL														
<table border="1"> <thead> <tr> <th colspan="2">Spacing Orders</th> </tr> <tr> <th>Order No</th> <th>Unit Size</th> </tr> </thead> <tbody> <tr> <td>185087</td> <td>640</td> </tr> <tr> <td>185688</td> <td>640</td> </tr> </tbody> </table>		Spacing Orders		Order No	Unit Size	185087	640	185688	640	<table border="1"> <thead> <tr> <th colspan="2">Perforated Intervals</th> </tr> <tr> <th>From</th> <th>To</th> </tr> </thead> <tbody> <tr> <td>13700</td> <td>18540</td> </tr> </tbody> </table>	Perforated Intervals		From	To	13700	18540
Spacing Orders																
Order No	Unit Size															
185087	640															
185688	640															
Perforated Intervals																
From	To															
13700	18540															
<table border="1"> <thead> <tr> <th colspan="1">Acid Volumes</th> </tr> </thead> <tbody> <tr> <td>19,932 GALS 15% HCL</td> </tr> </tbody> </table>		Acid Volumes	19,932 GALS 15% HCL	<table border="1"> <thead> <tr> <th colspan="1">Fracture Treatments</th> </tr> </thead> <tbody> <tr> <td>5,274,560# PROPPANT 109,265 BLWTR</td> </tr> </tbody> </table>	Fracture Treatments	5,274,560# PROPPANT 109,265 BLWTR										
Acid Volumes																
19,932 GALS 15% HCL																
Fracture Treatments																
5,274,560# PROPPANT 109,265 BLWTR																

Formation	Top
BRITT SAND	12362
SPRINGER	13564

Were open hole logs run? No

Date last log run:

Were unusual drilling circumstances encountered? No

Explanation:

Other Remarks
OCC: FLE ORDER HAS NOT BEEN ISSUED. WE HAVE ACCEPTED OPERATORS DATA AS SUBMITTED. IRREGULAR SECTION.

Lateral Holes
Sec: 14 TWP: 3N RGE: 5W County: GRADY
NE NE NW NE
110 FNL 1409 FEL of 1/4 SEC
Depth of Deviation: 13118 Radius of Turn: 713 Direction: 360 Total Length: 4964
Measured Total Depth: 18729 True Vertical Depth: 13315 End Pt. Location From Release, Unit or Property Line: 110

FOR COMMISSION USE ONLY
Status: Accepted
1133289

API 051-23998

Permit Plat

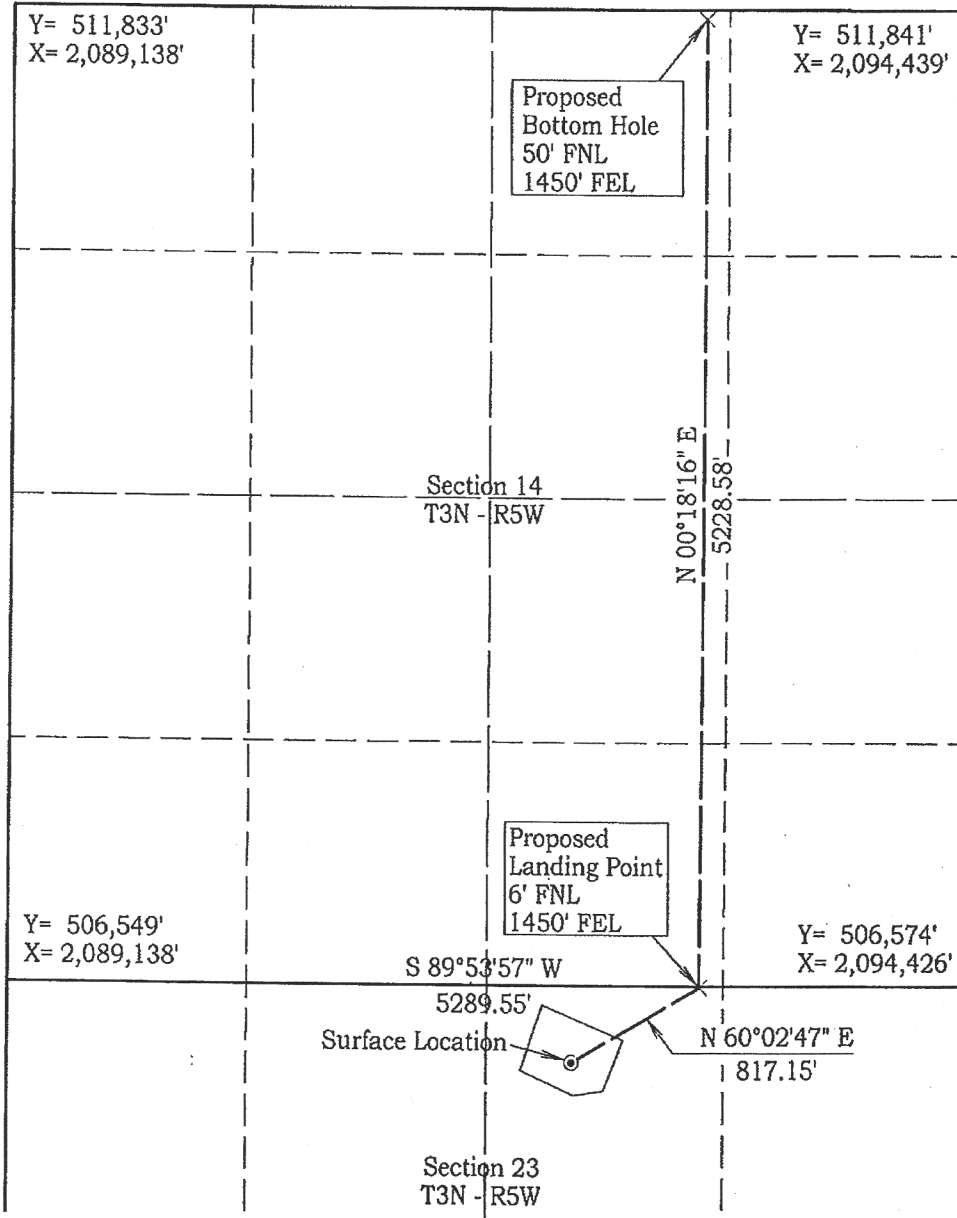
M & M Land Surveying, Inc.

520 "E" Street NW. Ardmore, OK. 73401
Office 580-226-0446 Mobile 580-221-4999 Fax 580-226-7158

Company Name: Newfield Exploration Mid-Continent, Inc. Lease Name: Dickey #1H-14
Section 23 Township 3 North Range 5 West County Grady Oklahoma

Surface Location 413' FNL - 2158' FEL Elevation 1215'

ALL SECTION CORNER COORDINATES ARE NAD 27



Bearings are based
on Geodetic North.
Unless otherwise noted

Scale: 1" = 1000'
Invoice # 15016
Date 1/15/15

Coordinates were derived
from GPS RTK methods
and are only accurate
within ±10 feet

Location GPS NAD 27
Oklahoma South

Surface Location
Latitude: 34.72381°
Longitude: 97.69294°
Y = 506,151'
X = 2,092,270'

Location NAD 83
Surface Location
Latitude: 34.72389°
Longitude: 97.69325°
Y = 506,194'
X = 2,060,674'

CERTIFICATE:

I, D. Harry McClintick, a Registered Land Surveyor in the state of Oklahoma, do hereby certify that the above described Well Location was surveyed and staked on the ground as shown.

D. Harry McClintick 10/30/15
D. Harry McClintick, R.P.L.S. # 1367, CA # 3093

This location has been staked according to the best official survey records available to us, but its accuracy is not guaranteed. Please review this plat and notify us immediately of any discrepancy.

