

Oklahoma Corporation Commission
Oil & Gas Conservation Division
Post Office Box 52000
Oklahoma City, Oklahoma 73152-2000
Rule 165: 10-3-25

Form 1002A

API No.: 35073252260000

Completion Report

Spud Date: January 12, 2016

OTC Prod. Unit No.: 073-217460

Drilling Finished Date: February 04, 2016

1st Prod Date: April 14, 2016

Completion Date: April 14, 2016

Drill Type: HORIZONTAL HOLE

Well Name: WHISKEY JACK 2314 1H

Purchaser/Measurer:

Location: KINGFISHER 27 15N 7W
NE NE NE NE
315 FNL 236 FEL of 1/4 SEC
Latitude: -97.92390181 Longitude: 35.75414232
Derrick Elevation: 1169 Ground Elevation: 1148

First Sales Date:

Operator: DEVON ENERGY PRODUCTION CO LP 20751

333 W SHERIDAN AVE
OKLAHOMA CITY, OK 73102-5010

Completion Type	
X	Single Zone
	Multiple Zone
	Commingled

Location Exception
Order No
641888

Increased Density
Order No
There are no Increased Density records to display.

Casing and Cement							
Type	Size	Weight	Grade	Feet	PSI	SAX	Top of CMT
CONDUCTOR	20"	90#	H40	80		12	SURFACE
SURFACE	13 3/8"	54.5#	J-55	340		350	SURFACE
INTERMEDIATE	9 5/8"	40#	J-55	1990		880	SURFACE
PRODUCTION	5 1/2"	20#	P-110	18700		2300	3556

Liner								
Type	Size	Weight	Grade	Length	PSI	SAX	Top Depth	Bottom Depth
There are no Liner records to display.								

Total Depth: 18710

Packer	
Depth	Brand & Type
There are no Packer records to display.	

Plug	
Depth	Plug Type
There are no Plug records to display.	

Initial Test Data										
Test Date	Formation	Oil BBL/Day	Oil-Gravity (API)	Gas MCF/Day	Gas-Oil Ratio Cu FT/BBL	Water BBL/Day	Pumpin or Flowing	Initial Shut-In Pressure	Choke Size	Flow Tubing Pressure
Apr 27, 2016	MISSISSIPPIAN (EX CHESTER)	191		71	372	1408	PUMPING		64	366

Completion and Test Data by Producing Formation									
Formation Name: MISSISSIPPIAN (EX CHESTER)				Code: 359MSNLC			Class: OIL		
Spacing Orders				Perforated Intervals					
Order No		Unit Size		From			To		
641393		640		8518			18524		
641928		MULTIUNIT							
Acid Volumes				Fracture Treatments					
95 BBLS OF ACID				491,801 BBLS OF FLUID					
				26,437,920 LBS OF SAND					

Formation	Top
MISSISSIPPIAN (LESS CHESTER)	8007

Were open hole logs run? No

Date last log run:

Were unusual drilling circumstances encountered? No

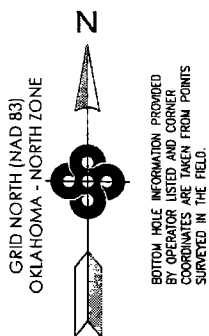
Explanation:

Other Remarks
OCC: FLE ORDER HAS NOT BEEN ISSUED. WE HAVE ACCEPTED OPERATORS DATA AS SUBMITTED. IRREGULAR SECTION. MULTI-UNIT WELL

Lateral Holes
Sec: 14 TWP: 15N RGE: 7W County: KINGFISHER NE NW NW NW 164 FNL 342 FWL of 1/4 SEC Depth of Deviation: 7654 Radius of Turn: 454 Direction: 3 Total Length: 10602 Measured Total Depth: 18710 True Vertical Depth: 7970 End Pt. Location From Release, Unit or Property Line: 164

FOR COMMISSION USE ONLY
Status: Accepted

API 013-25226



KINGFISHER COUNTY, OKLAHOMA
236' FEL - 315' FNL SECTION 27 TOWNSHIP 15N RANGE 7W I.M.

OPERATOR: FELIX ENERGY, LLC

LEASE NAME: WHISKEY JACK 23

WELL NO: 1H

BEST ACCESSIBILITY TO LOCATION: FROM EAST LINE

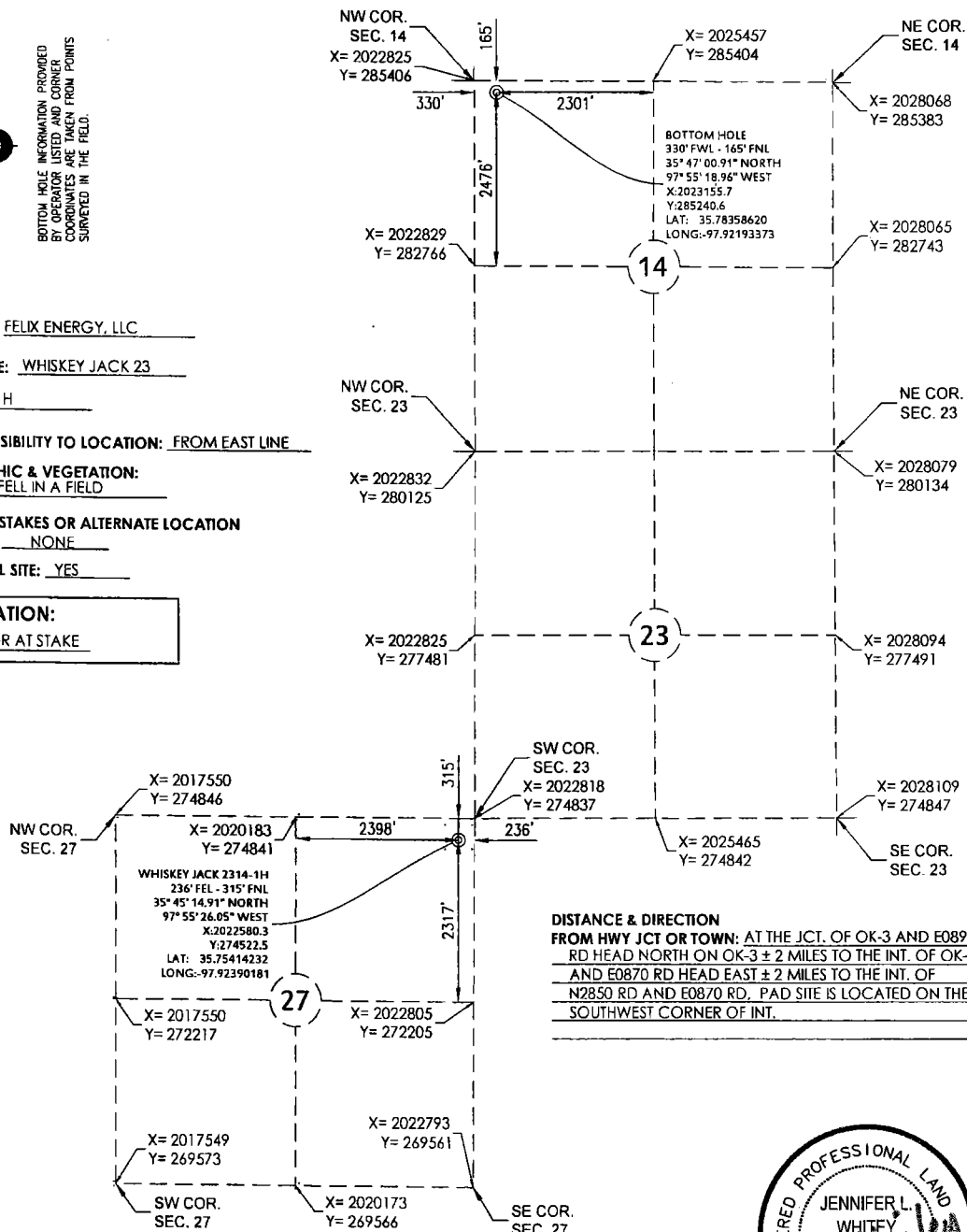
TOPOGRAPHIC & VEGETATION:
LOCATION FELL IN A FIELD

REFERENCE STAKES OR ALTERNATE LOCATION
STAKES SET: NONE

GOOD DRILL SITE: YES

ELEVATION:

1148.00 GR AT STAKE



DISTANCE & DIRECTION
FROM HWY JCT OR TOWN: AT THE JCT. OF OK-3 AND E0890 RD HEAD NORTH ON OK-3 ± 2 MILES TO THE INT. OF OK-3 AND E0870 RD HEAD EAST ± 2 MILES TO THE INT. OF N2850 RD AND E0870 RD. PAD SITE IS LOCATED ON THE SOUTHWEST CORNER OF INT.

(THE FOLLOWING INFORMATION WAS GATHERED USING A GPS RECEIVER ACCURACY ±2-3 METERS)

GPS
DATUM: NAD27
LAT: 35.75414232
LONG: -97.92390181

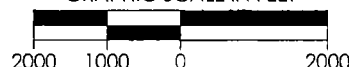
STATE PLANE
COORDINATES:
ZONE: OK-NORTH NAD27
X: 2022580.3
Y: 274522.5


DATE STAKED: 12/22/2015

GENERAL NOTES:

THE TIES AND FOOTAGES SHOWN ON THIS PLAT ARE FROM LINES OF OCCUPATION FROM A SURVEY MADE ON THE GROUND AND / OR BEARING AND DISTANCES FROM THE GENERAL LAND OFFICE PLAT OF THE AREA SHOWN AND MAY NOT BE THE ACTUAL PROPERTY CORNERS. THIS PLAT DOES NOT REPRESENT A TRUE BOUNDARY SURVEY.

GRAPHIC SCALE IN FEET



REVISION		<p>"WHISKEY JACK 2314-1H"</p> <p>PART OF THE NE/4 OF SECTION 27, T-15-N, R-7-W</p> <p>PROPOSED DRILL SITE</p> <p>KINGFISHER COUNTY, OKLAHOMA</p>		 FELIX ENERGY
R1	SHL MOVED			
R2	SHL MOVED			
		SCALE: 1" = 2000'	DW SHEET NO.: 1 OF 6	
		PLOT DATE: 12-23-2015 DRAWN BY:		