

Oklahoma Corporation Commission  
Oil & Gas Conservation Division  
Post Office Box 52000  
Oklahoma City, Oklahoma 73152-2000  
Rule 165: 10-3-25

Form 1002A

API No.: 35003231850000

**Completion Report**

Spud Date: April 23, 2015

OTC Prod. Unit No.:

Drilling Finished Date: May 07, 2015

1st Prod Date:

Completion Date: May 02, 2016

**Drill Type: HORIZONTAL HOLE**

Well Name: ARLENE 26-26-11 1H

Purchaser/Measurer:

Location: ALFALFA 26 26N 11W  
NW NE NW NE  
225 FNL 1940 FEL of 1/4 SEC  
Derrick Elevation: 1202 Ground Elevation: 1180

First Sales Date:

Operator: CHESAPEAKE OPERATING LLC 17441  
PO BOX 18496  
6100 N WESTERN AVE  
OKLAHOMA CITY, OK 73154-0496

Completion Type		Location Exception		Increased Density	
	Single Zone		Order No		Order No
	Multiple Zone		637900		637899
	Commingled				

Casing and Cement							
Type	Size	Weight	Grade	Feet	PSI	SAX	Top of CMT
SURFACE	13 3/8	48	J-55	620		675	SURFACE
INTERMEDIATE	9 5/8	36	J-55	1217		345	26
PRODUCTION	7	26	P-110EC	5700		305	2562

Liner								
Type	Size	Weight	Grade	Length	PSI	SAX	Top Depth	Bottom Depth
LINER	4 1/2	11.6	P-110	5138	0	515	5347	10485

**Total Depth: 10485**

Packer		Plug	
Depth	Brand & Type	Depth	Plug Type
There are no Packer records to display.		There are no Plug records to display.	

Initial Test Data										
Test Date	Formation	Oil BBL/Day	Oil-Gravity (API)	Gas MCF/Day	Gas-Oil Ratio Cu FT/BBL	Water BBL/Day	Pumpin or Flowing	Initial Shut-In Pressure	Choke Size	Flow Tubing Pressure
There are no Initial Data records to display.										

Completion and Test Data by Producing Formation										
Formation Name: N/A				Code:			Class: TA			

Formation	Top
MISSISSIPPIAN	5524

Were open hole logs run? No

Date last log run:

Were unusual drilling circumstances encountered? No

Explanation:

Other Remarks
WAITING ON COMPLETION

Lateral Holes
Sec: 26 TWP: 26N RGE: 11W County: ALFALFA  SW SW SE SE  179 FSL 1108 FEL of 1/4 SEC  Depth of Deviation: 5262 Radius of Turn: 386 Direction: 176 Total Length: 4961  Measured Total Depth: 10485 True Vertical Depth: 5648 End Pt. Location From Release, Unit or Property Line: 179

FOR COMMISSION USE ONLY	
Status: Accepted	1133497

API NO. 35-003-23185  
OTC PROD.  
UNIT NO. N/A

PLEASE TYPE OR USE BLACK INK ONLY  
NOTE:  
Attach copy of original 1002A if recompletion or reentry.

OKLAHOMA CORPORATION COMMISSION  
Oil & Gas Conservation Division  
Post Office Box 52000  
Oklahoma City, Oklahoma 73152-2000  
Rule 165:10-3-25

RECEIVED  
15-193

Form 1002A

Rev. 2009

MAY 03 2016

☒ ORIGINAL  
☐ AMENDED  
Reason Amended

TYPE OF DRILLING OPERATION  
☐ STRAIGHT HOLE ☐ DIRECTIONAL HOLE ☒ HORIZONTAL HOLE  
SERVICE WELL

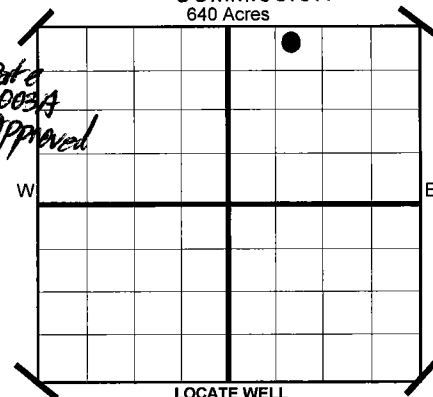
If directional or horizontal, see reverse for bottom hole location.

COUNTY ALFALFA SEC 26 TWP 26N RGE 11W  
LEASE NAME ARLENE 26-26-11 WELL NO 1H  
SHL NW 1/4 NE 1/4 NW 1/4 NE 1/4 225 1/4 SEC 1,940  
ELEVATION Derrick Fl 1,202 Ground 1,180 Latitude (if Known) Longitude (if Known)  
OPERATOR NAME CHESAPEAKE OPERATING, L.L.C. OTC/OCC OPERATOR NO. 17441  
ADDRESS P.O. BOX 18496  
CITY OKLAHOMA CITY STATE OK ZIP 73154

COMPLETION REPORT

SPUD DATE 4/23/2015  
DRLG FINISHED DATE 5/7/2015  
DATE OF WELL COMPLETION 5-2-2016  
1ST PROD DATE N/A  
RECOMP DATE  
Longtitude (if Known)

OKLAHOMA CORPORATION COMMISSION  
640 Acres



COMPLETION TYPE

SINGLE ZONE  
MULTIPLE ZONE  
Application Date  
COMMINGLED  
Application Date  
LOCATION EXCEPTION ORDER NO. 637900 (INTERIM)  
INCREASED DENSITY ORDER NO. 637899

CASING & CEMENT (Form 1002C must be attached)

TYPE	SIZE	WEIGHT	GRADE	FEET	PSI	SAX	TOP
CONDUCTOR							
SURFACE	13 3/8"	48#	J-55	620		675	SURFACE
INTERMEDIATE	9 5/8"	36#	J-55	1,217		345	26
PRODUCTION	7"	26#	P-110EC	5,700		305	2,562
LINER	4 1/2"	11.6#	P-110	5,347-10,485		515	5,348
							10,485

PACKER @ N/A BRAND & TYPE  
PACKER @ BRAND & TYPE

PLUG @ TYPE PLUG @ TYPE  
PLUG @ TYPE PLUG @ TYPE

TOTAL DEPTH

COMPLETION & TEST DATA BY PRODUCING FORMATION

FORMATION	
SPACING & SPACING ORDER NUMBER	
CLASS: Oil, Gas, Dry, Inj. Disp, Comm Disp, Svc	Temporarily Abandoned
PERFORATED INTERVALS	
ACID/VOLUME	
FRACTURE TREATMENT (Fluids/Prop Amounts)	

AS SUBMITTED

Minimum Gas Allowable (165:10-17-7)

Gas Purchaser/Measurer

☐

OR

1st Sales Date

INITIAL TEST DATA

Oil Allowable (165:10-13-3)

INITIAL TEST DATE	N/A
OIL-BBL/DAY	
OIL-GRAVITY ( API)	
GAS-MCF/DAY	
GAS-OIL RATIO CU FT/BBL	
WATER-BBL/DAY	
PUMPING OR FLOWING	
INITIAL SHUT-IN PRESSURE	
CHOKE SIZE	
FLOW TUBING PRESSURE	

A record of the formations drilled through, and pertinent remarks are presented on the reverse. I declare that I have knowledge of the contents of this report and am authorized by my organization to make this report, which was prepared by me or under my supervision and direction, with the data and facts stated herein to be true, correct, and complete to the best of my knowledge and belief.

Sara Everett, Regulatory Analyst  
SIGNATURE NAME (PRINT OR TYPE) DATE 5/2/2016 PHONE NUMBER 405-848-8000  
P.O. BOX 18496 OKLAHOMA CITY OK 73154  
ADDRESS CITY STATE ZIP EMAIL ADDRESS sara.everett@chk.com

**PLEASE TYPE OR USE BLACK INK ONLY**  
**FORMATION RECORD**

Give formation names and tops, if available, or descriptions and thickness of formations drilled through. Show intervals cored or drillstem tested.

LEASE NAME ARLENE 26-26-11

WELL NO. 1H

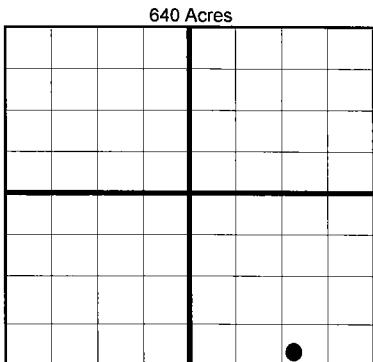
NAMES OF FORMATIONS	TOP
MISSISSIPPIAN	5,524

FOR COMMISSION USE ONLY	
ITD on file <input type="checkbox"/> YES <input type="checkbox"/> NO	
APPROVED _____	DISAPPROVED _____
2) Reject Codes	

Were open hole logs run?	yes	<input checked="" type="checkbox"/> no
Date last log was run	N/A	
Was CO <sub>2</sub> encountered?	yes	<input checked="" type="checkbox"/> no at what depths?
Was H <sub>2</sub> S encountered?	yes	<input checked="" type="checkbox"/> no at what depths?
Were unusual drilling circumstances encountered?	yes	<input checked="" type="checkbox"/> no
If yes, briefly explain.		

Other remarks:

\*WAITING ON COMPLETION

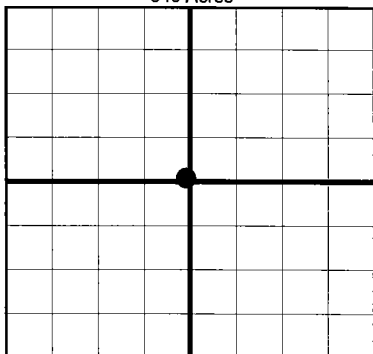


If more than three drainholes are proposed, attach a separate sheet indicating the necessary information.

Direction must be stated in degrees azimuth. Please note, the horizontal drainhole and its end point must be located within the boundaries of the lease or spacing unit.

**Directional surveys are required for all drainholes and directional wells.**

640 Acres



**BOTTOM HOLE LOCATION FOR DIRECTIONAL HOLE**

SEC	TWP	RGE	COUNTY
Spot Location	1/4	1/4	1/4
Measured Total Depth	True Vertical Depth	BHL From Lease, Unit, or Property Line:	

**BOTTOM HOLE LOCATION FOR HORIZONTAL HOLE: (LATERALS)**

SEC	TWP	RGE	COUNTY
26	26N	11W	ALFALFA
Spot Location	SW 1/4	SW 1/4	SE 1/4
Depth of Deviation	5,262	Radius of Turn	386
Measured Total Depth	10,485	True Vertical Depth	5,648
Feet From 1/4 Sec Lines	FSL 179	FEL	1,108
Direction	176	Total Length	4,961
BHL From Lease, Unit, or Property Line:		179	

**LATERAL #2**

SEC	TWP	RGE	COUNTY
Spot Location	1/4	1/4	1/4
Depth of Deviation	Radius of Turn	Direction	Total Length
Measured Total Depth	True Vertical Depth	BHL From Lease, Unit, or Property Line:	

**LATERAL #3**

SEC	TWP	RGE	COUNTY
Spot Location	1/4	1/4	1/4
Depth of Deviation	Radius of Turn	Direction	Total Length
Measured Total Depth	True Vertical Depth	BHL From Lease, Unit, or Property Line:	