

Oklahoma Corporation Commission
Oil & Gas Conservation Division
Post Office Box 52000
Oklahoma City, Oklahoma 73152-2000
Rule 165: 10-3-25

Form 1002A

API No.: 35043234480000

Completion Report

Spud Date: January 19, 2016

OTC Prod. Unit No.: 432174240

Drilling Finished Date: February 15, 2016

1st Prod Date: May 08, 2016

Completion Date: May 09, 2016

Drill Type: HORIZONTAL HOLE

Min Gas Allowable: Yes

Well Name: METZLER 1-19H

Purchaser/Measurer: MARKWEST

Location: DEWEY 19 17N 19W
SE SW SW SW
250 FSL 600 FWL of 1/4 SEC
Derrick Elevation: 1867 Ground Elevation: 1848

First Sales Date: 5/8/16

Operator: JMA ENERGY COMPANY LLC 20475

1021 NW GRAND BLVD
OKLAHOMA CITY, OK 73118-6039

Completion Type	
X	Single Zone
	Multiple Zone
	Commingled

Location Exception
Order No
643073

Increased Density
Order No
There are no Increased Density records to display.

Casing and Cement							
Type	Size	Weight	Grade	Feet	PSI	SAX	Top of CMT
SURFACE	9 5/8	36#	J55	1542		805	SURFACE
INTERMEDIATE	7	26	N80	8637		305	2672
PRODUCTION	4 1/2	13.5	P110	13620		555	8424

Liner								
Type	Size	Weight	Grade	Length	PSI	SAX	Top Depth	Bottom Depth
There are no Liner records to display.								

Total Depth: 13620

Packer	
Depth	Brand & Type
There are no Packer records to display.	

Plug	
Depth	Plug Type
There are no Plug records to display.	

Initial Test Data										
Test Date	Formation	Oil BBL/Day	Oil-Gravity (API)	Gas MCF/Day	Gas-Oil Ratio Cu FT/BBL	Water BBL/Day	Pumpin or Flowing	Initial Shut-In Pressure	Choke Size	Flow Tubing Pressure
May 09, 2016	CLEVELAND	16		416	26000	3857	FLOWING		30/64	1150

Completion and Test Data by Producing Formation									
Formation Name: CLEVELAND				Code: 405CLVD			Class: GAS		
Spacing Orders				Perforated Intervals					
Order No		Unit Size		From			To		
641053		640		9393			13595		
Acid Volumes				Fracture Treatments					
There are no Acid Volume records to display.				4,766,047 TOTAL PROP					

Formation	Top
TONKAWA	7834
COTTAGE GROVE	8368
CLEVELAND	9056

Were open hole logs run? No

Date last log run:

Were unusual drilling circumstances encountered? No

Explanation:

Other Remarks
OCC: FLE ORDER HAS NOT BEEN ISSUED. WE HAVE ACCEPTED OPERATORS DATA AS SUBMITTED. IRREGULAR SECTION.

Lateral Holes
Sec: 19 TWP: 17N RGE: 19W County: DEWEY
SE NW NE NW
584 FNL 1912 FWL of 1/4 SEC
Depth of Deviation: 8700 Radius of Turn: 960 Direction: 360 Total Length: 3960
Measured Total Depth: 13620 True Vertical Depth: 9147 End Pt. Location From Release, Unit or Property Line: 584

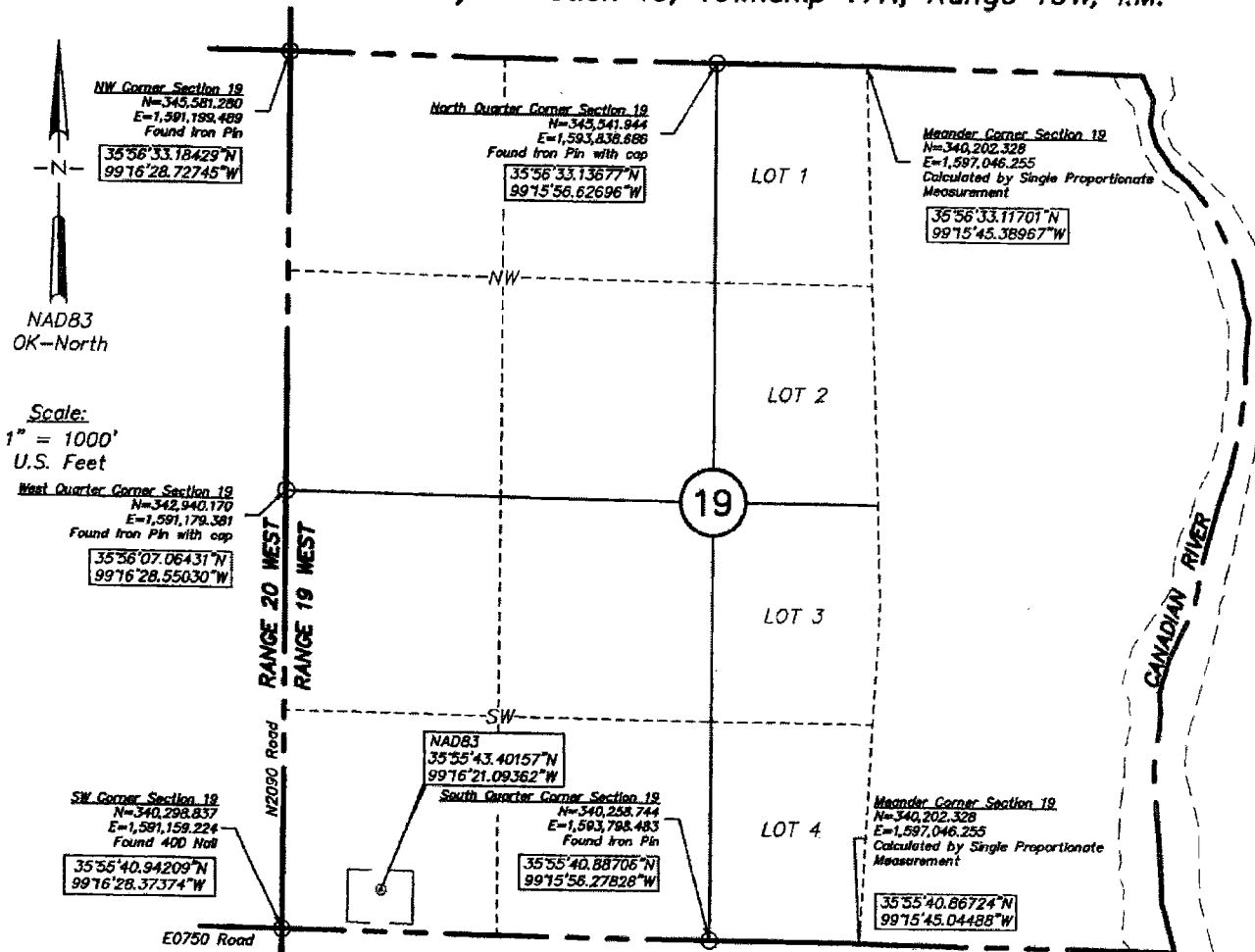
FOR COMMISSION USE ONLY
Status: Accepted
1133415

SPUD DATE: 01/19/16
COMPLETION DATE:
1ST SALES DATE: 05/08/16
API NO: 043 23448
OTC NO: 043 217424

1. Prop 4070 WTS 224.9540, 4070 R: 17.2004 Amd 22.86 LTR 4.667 LTR, LTR 43.272-74, 41.811-41.6.
2. Prop 4070 WTS 228.7000, 4070 R: 18.6004 Amd 22.86 LTR 4.814 LTR, LTR 43.272-74, 41.811-41.6.
3. Prop 4070 WTS 226.1734, 4070 R: 18.8604 Amd 23.88 LTR 4.783 LTR, LTR 43.272-74, 41.760-68, 12.704-1.
4. Prop 4070 WTS 226.5604, 4070 R: 17.3204 Amd 23.88 LTR 4.858 LTR, LTR 43.272-74, 41.760-68, 12.704-1.
5. Prop 4070 WTS 225.7148, 4070 R: 17.6404 Amd 23.88 LTR 4.802 LTR, LTR 43.275-77, 12.818-38, 12.606-67.
6. Prop 4070 WTS 225.8504, 4070 R: 17.2704 Amd 22.88 LTR 4.78 LTR, LTR 43.272-74, 41.760-68, 12.704-1.
7. Prop 4070 WTS 225.8474, 4070 R: 17.3504 Amd 23.88 LTR 4.858 LTR, LTR 43.202-24, 11.264-64, 11.908-10.
8. Prop 4070 WTS 225.8804, 4070 R: 16.9504 Amd 22.88 LTR 4.78 LTR 4.516 LTR, LTR 43.151-53, 11.763-65, 11.734-64.
9. Prop 4070 WTS 225.8804, 4070 R: 17.4104 Amd 22.88 LTR 4.803 LTR, LTR 43.167-77, 11.763-65, 11.734-64.
10. Prop 4070 WTS 224.4234, 4070 R: 18.0404 Amd 23.88 LTR 4.773 LTR, LTR 43.147-49, 11.888-90, 11.828-30.
11. Prop 4070 WTS 224.4748, 4070 R: 17.5304 Amd 23.88 LTR 4.701 Amd 46.01 LTR, LTR 43.147-49, 11.828-30, 11.720-62, 11.111-11.
12. Prop 4070 WTS 229.4004, 4070 R: 19.7004 Amd 23.88 LTR 4.660 LTR, LTR 43.106-71, 11.000-08, 10.942-44.
13. Prop 4070 WTS 226.2184, 4070 R: 17.9504 Amd 23.88 LTR 4.467 LTR, LTR 43.104-70, 10.858-59.
14. Prop 4070 WTS 225.1834, 4070 R: 17.1404 Amd 23.88 LTR 4.436 LTR, LTR 43.106-71, 10.623-25, 10.561-53.
15. Prop 4070 WTS 226.2004, 4070 R: 17.3004 Amd 23.88 LTR 4.507 LTR, LTR 43.106-71, 10.492-21, 10.492-21.
16. Prop 4070 WTS 226.0104, 4070 R: 17.9704 Amd 23.88 LTR 4.531 LTR, LTR 43.265-67, 10.203-20, 10.138-40.
17. Prop 4070 WTS 221.5804, 4070 R: 19.2304 Amd 23.88 LTR 4.378 LTR, LTR 43.104-64, 9.984-49, 9.925-25.
18. Prop 4070 WTS 229.8134, 4070 R: 17.8004 Amd 23.88 LTR 4.718 LTR, LTR 43.104-64, 9.984-49, 9.925-25.
19. Prop 4070 WTS 226.6194, 4070 R: 15.0504 Amd 23.88 LTR 4.359 LTR, LTR 43.671-78, 22.614-19, 9.558-60.
20. Prop 4070 WTS 226.6194, 4070 R: 15.1624 Amd 23.88 LTR 4.389 LTR, LTR 43.671-78, 22.614-19, 9.558-60.
21. Prop 4070 WTS 224.4748, 4070 R: 15.5004 Amd 23.88 LTR 4.325 LTR, LTR 43.671-78, 22.614-19, 9.558-60.

API 043-23448

Dewey County, Oklahoma
250'FSL-600'FWL in SW/4 Section 19, Township 17N, Range 19W, I.M.

Operator: JMA Energy Company, LLCTopography & Vegetation Terraced Wheat FieldLease Name: MetzlerGood Drill Site? YesWell No.: Metzler #1-19HAlternate Location 250'FSL-1100'FWL, 800'FWL, & 500'FWL all staked.Ground Elevation @ Stake: 1849.5

Best Accessibility to Well Location From the West Line, along
N2090 Road. There is an existing 22' wide gate 110' North
of the intersection of N2090 Road and E0750 Road.

Datum: NAD83Lat: $35^{\circ}55'43.40157''N$ Long: $99^{\circ}16'21.09362''W$ Lat: $35.928722658''N$ Long: $99.272526006''W$

State Plane Coordinates: US Feet

Zone: Oklahoma North (NAD83)N: 340,539.655E: 1,591,761.155

SURVEY COMPLETED FOR:

Directions from Town or Highway Junction From Leedey, Oklahoma, along State Hwy. 34;
Thence north 4.5 miles to E0750 Road; Thence east 2 miles to the
Southwest corner of Section 19.

Field Staking on: October 8, 2015Date Drawn: October 9, 2015

JMA
 ENERGY COMPANY

SL LEMKE
LS LAND SURVEYING

3226 BART CONNER DRIVE
 NORMAN, OK 73072

CA#6975
 Phone (405)366-8541
<http://www.lemke-ls.com>