

Oklahoma Corporation Commission  
Oil & Gas Conservation Division  
Post Office Box 52000  
Oklahoma City, Oklahoma 73152-2000  
Rule 165: 10-3-25

Form 1002A

API No.: 35049250640000

**Completion Report**

Spud Date: October 15, 2015

OTC Prod. Unit No.: 049-217386

Drilling Finished Date: October 20, 2015

1st Prod Date: February 25, 2016

Completion Date: February 25, 2016

**Drill Type: STRAIGHT HOLE**

Well Name: ESTELLE 1

Purchaser/Measurer:

Location: GARVIN 26 4N 2E  
C NW SE SW  
990 FSL 1650 FWL of 1/4 SEC  
Derrick Elevation: 1033 Ground Elevation: 1027

First Sales Date:

Operator: B B R OIL CORPORATION 2902

10 W MAIN ST STE 212  
ARDMORE, OK 73401-6515

Completion Type	
X	Single Zone
	Multiple Zone
	Commingled

Location Exception
Order No
There are no Location Exception records to display.

Increased Density
Order No
There are no Increased Density records to display.

Casing and Cement							
Type	Size	Weight	Grade	Feet	PSI	SAX	Top of CMT
SURFACE	8 5/8	24	J-55	200	250	150	SURFACE
PRODUCTION	5 1/2	15.5	J-55	3000	1200	230	1630

Liner								
Type	Size	Weight	Grade	Length	PSI	SAX	Top Depth	Bottom Depth
There are no Liner records to display.								

**Total Depth: 3025**

Packer	
Depth	Brand & Type
There are no Packer records to display.	

Plug	
Depth	Plug Type
2940	CIBP

Initial Test Data										
Test Date	Formation	Oil BBL/Day	Oil-Gravity (API)	Gas MCF/Day	Gas-Oil Ratio Cu FT/BBL	Water BBL/Day	Pumpin or Flowing	Initial Shut-In Pressure	Choke Size	Flow Tubing Pressure
Jan 19, 2016	HOXBAR						SWABBIN	220		
Feb 25, 2016	HOXBAR	10						470		

Completion and Test Data by Producing Formation									
Formation Name: HOXBAR				Code: 405HXBR			Class: DRY		
Spacing Orders				Perforated Intervals					
Order No		Unit Size		From			To		
124772		40		2944			2950		
Acid Volumes				Fracture Treatments					
There are no Acid Volume records to display.				There are no Fracture Treatments records to display.					

Formation Name: HOXBAR		Code: 405HXBR		Class: OIL	
Spacing Orders		Perforated Intervals			
Order No	Unit Size	From	To		
124772	40	2924	2928		
Acid Volumes		Fracture Treatments			
600 GALLONS 15% NEFE		There are no Fracture Treatments records to display.			

Formation	Top
DOUGLAS	2480
HOGSHOOTER	2730
BURNS SAND	2786
BURNS LIME	2825
BRUNDIDGE	2848
DYKEMAN (HOXBAR) UPPER	2910
DYKEMAN (HOXBAR) LOWER	2930
SIMPSON	2960

Were open hole logs run? Yes

Date last log run: October 21, 2015

Were unusual drilling circumstances encountered? No

Explanation:

Other Remarks
OCC - PER OPERATOR, TESTING HOXBAR PERFORATIONS FROM 2,944' - 2,950', THE SWABBING TEST WAS 95% WATER AND 5% OIL CUT.

**FOR COMMISSION USE ONLY**

1133493

Status: Accepted

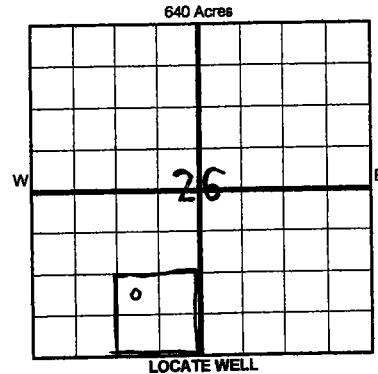
**OKLAHOMA CORPORATION COMMISSION**  
Oil & Gas Conservation Division  
Post Office Box 52000  
Oklahoma City, Oklahoma 73152-2000  
Rule 165:10-3-25

OKLAHOMA CORPORATION  
COMMISSION

Attach copy of original 1002A  
if recompletion or reentry.

TYPE OF DRILLING OPERATION  
☒ STRAIGHT HOLE ☐ DIRECTIONAL HOLE ☐ HORIZONTAL HOLE  
☐ SERVICE WELL  
 If directional or horizontal, see reverse for bottom hole location.

COUNTY	Garvin	SEC	26	TWP	4N	RGE	2E	DATE OF WELL COMPLETION	2-25-16
LEASE NAME	Estelle					WELL NO.	#1	1st PROD DATE	
NW 1/4	SE 1/4	SW 1/4	1/4	FSL OF 1/4 SEC	990	FWL OF 1/4 SEC	1650	RECOMP DATE	
ELEVATION	1033	Ground	1027	Latitude (if known)	34,47,5.15	Longitude (if known)	97,04,2.75		
OPERATOR NAME	BBR Oil Corporation						OTC/OCC OPERATOR NO.	02902-0	
ADDRESS	10 W. Main, Ste 212								
CITY	Ardmore					STATE	OK	ZIP 73401	



**CASING & CEMENT (Form 1002C must be attached)**

X	SINGLE ZONE
	MULTIPLE ZONE
	Application Date
	COMMINGLED
	Application Date
LOCATION	
EXCEPTION ORDER	
INCREASED DENSITY	
ORDER NO.	

CASING & CEMENT (Form 1002C must be attached)							
TYPE	SIZE	WEIGHT	GRADE	FEET	PSI	SAX	TOP OF CMT
CONDUCTOR							
SURFACE	8-5/8	24	J-55	200	250	150	surface
INTERMEDIATE							
PRODUCTION	5-1/2	15.5	J-55	3000	1200	230	1630
LINER							
						TOTAL DEPTH	3025

PACKER @ \_\_\_\_\_ BRAND & TYPE \_\_\_\_\_ PLUG @ 2940 TYPE CIBP PLUG @ \_\_\_\_\_ TYPE \_\_\_\_\_  
PACKER @ \_\_\_\_\_ BRAND & TYPE \_\_\_\_\_ PLUG @ \_\_\_\_\_ TYPE \_\_\_\_\_ PLUG @ \_\_\_\_\_ TYPE \_\_\_\_\_

### COMPLETION & TEST DATA BY PRODUCING FORMATION

FORMATION	Hoxbar	Hoxbar			No frac
SPACING & SPACING ORDER NUMBER	124772 - 40 AC	124772-40AC			
CLASS: Oil, Gas, Dry, Inj, Disp, Comm Disp, Svc	dry	oil			
PERFORATED INTERVALS	2944-50	2924-28			
	13 holes	9 holes			
ACID/VOLUME	none	600g 15%NEFE			
FRACTURE TREATMENT (Fluids/Prop Amounts)	none	none			

# AS SUBMITTED

Min Gas Allowable (165:10-17-7)  
OR  
Oil Allowable (165:10-13-3)

**Gas Purchaser/Measurer**  
**First Sales Date**

### INITIAL TEST DATA

INITIAL TEST DATA		Oil Allowable	(100:10-155)			
INITIAL TEST DATE	2-19-16	2-25-16				
OIL-BBL/DAY	<del>5%</del> see remarks	10				
OIL-GRAVITY ( API)						
GAS-MCF/DAY	tstm	tstm				
GAS-OIL RATIO CU FT/BBL						
WATER-BBL/DAY	<del>95%</del>	trace				
PUMPING OR FLOWING	swabbing					
INITIAL SHUT-IN PRESSURE	220 SITP	470 SITP				
CHOKE SIZE						
FLOW TUBING PRESSURE						

A record of the formations drilled through, and pertinent remarks are presented on the reverse. I declare that I have knowledge of the contents of this report and am authorized by my organization to make this report, which was prepared by me or under my supervision and direction, with the data and facts stated herein to be true, correct, and complete to the best of my knowledge and belief.

5-3-16 580-223-2887

to make this report, which was prepared by me of  
Michael J Braden  
 SIGNATURE

Michael J. Biddick

5-3-16 580-223-2887

10 W Main, Ste 212

Ardmore OK 73401  
CITY STATE ZIP

fractal1@sbcglobal.net  
EMAIL ADDRESS

**ADDRESS**

PLEASE TYPE OR USE BLACK INK ONLY  
FORMATION RECORD

Give formation names and tops, if available, or descriptions and thickness of formations drilled through. Show intervals cored or drillstem tested.

NAMES OF FORMATIONS	TOP
Douglas	2480
Hogshooter	2730
Burns sand	2786
Burns Lime	2825
Brundage	2848
Dykeman (Hoxbar) upper	2910
Dykeman (Hoxbar) lower	2930
Simpson	2960

LEASE NAME ESTELLE

WELL NO. #1

FOR COMMISSION USE ONLY	
ITD on file <input type="checkbox"/> YES <input type="checkbox"/> NO	
APPROVED _____	DISAPPROVED _____
2) Reject Codes	
_____	
_____	
_____	
_____	

Were open hole logs run?	<u>X</u> yes <input type="checkbox"/> no
Date Last log was run	<u>Oct 21, 2015</u>
Was CO <sub>2</sub> encountered?	<input type="checkbox"/> yes <u>X</u> no at what depths? _____
Was H <sub>2</sub> S encountered?	<input type="checkbox"/> yes <u>X</u> no at what depths? _____
Were unusual drilling circumstances encountered?	<input type="checkbox"/> yes <u>X</u> no
If yes, briefly explain below	

Other remarks:

OCC - per operator testing Hoxbar perforations from 2944-2950  
the swabbing test was 95% water & 5% oil cut.

640 Acres


If more than three drainholes are proposed, attach a separate sheet indicating the necessary information.

Direction must be stated in degrees azimuth.  
Please note, the horizontal drainhole and its end point must be located within the boundaries of the lease or spacing unit.

Directional surveys are required for all drainholes and directional wells.

640 Acres


BOTTOM HOLE LOCATION FOR DIRECTIONAL HOLE

SEC	TWP	RGE	COUNTY					
Spot Location			1/4	1/4	1/4	Feet From 1/4 Sec Lines	FSL	FWL
Measured Total Depth			True Vertical Depth		BHL From Lease, Unit, or Property Line:			

BOTTOM HOLE LOCATION FOR HORIZONTAL HOLE: (LATERALS)

LATERAL #1		SEC	TWP	RGE	COUNTY				
Spot Location			1/4	1/4	1/4	Feet From 1/4 Sec Lines	FSL	FWL	
Depth of Deviation			Radius of Turn		Direction		Total Length		
Measured Total Depth			True Vertical Depth		BHL From Lease, Unit, or Property Line:				

LATERAL #2		SEC	TWP	RGE	COUNTY				
Spot Location			1/4	1/4	1/4	Feet From 1/4 Sec Lines	FSL	FWL	
Depth of Deviation			Radius of Turn		Direction		Total Length		
Measured Total Depth			True Vertical Depth		BHL From Lease, Unit, or Property Line:				

LATERAL #3		SEC	TWP	RGE	COUNTY				
Spot Location			1/4	1/4	1/4	Feet From 1/4 Sec Lines	FSL	FWL	
Depth of Deviation			Radius of Turn		Direction		Total Length		
Measured Total Depth			True Vertical Depth		BHL From Lease, Unit, or Property Line:				