

Oklahoma Corporation Commission  
Oil & Gas Conservation Division  
Post Office Box 52000  
Oklahoma City, Oklahoma 73152-2000  
Rule 165: 10-3-25

Form 1002A

API No.: 35121247800000

**Completion Report**

Spud Date: January 09, 2016

OTC Prod. Unit No.: 121-217333-0-0000

Drilling Finished Date: February 20, 2016

1st Prod Date: March 24, 2016

Completion Date: March 19, 2016

**Drill Type: HORIZONTAL HOLE**

Min Gas Allowable: Yes

Well Name: LEHNHARD 1H-7XX

Purchaser/Measurer: NEWFIELD

Location: PITTSBURG 19 5N 14E  
NE SE NW SE  
1836 FSL 1386 FEL of 1/4 SEC  
Latitude: 34.88912 Longitude: -95.86453  
Derrick Elevation: 812 Ground Elevation: 789

First Sales Date: 03/24/2016

Operator: NEWFIELD EXPLORATION MID-CON INC 20944

1 WILLIAMS CTR STE 1900  
TULSA, OK 74172-0162

Completion Type	
X	Single Zone
	Multiple Zone
	Commingled

Location Exception	
Order No	
652143	

Increased Density	
Order No	
647794	
647796	

Casing and Cement							
Type	Size	Weight	Grade	Feet	PSI	SAX	Top of CMT
CONDUCTOR	20	94	H-40	53		7	SURFACE
SURFACE	13 3/8	54.5	J-55	492	500	370	SURFACE
INTERMEDIATE	9 5/8	40	J-55	4169	1500	560	2287
PRODUCTION	5 1/2	20	P-110	17831	9500	2375	3729

Liner								
Type	Size	Weight	Grade	Length	PSI	SAX	Top Depth	Bottom Depth
There are no Liner records to display.								

**Total Depth: 20335**

Packer	
Depth	Brand & Type
There are no Packer records to display.	

Plug	
Depth	Plug Type
There are no Plug records to display.	

Initial Test Data										
Test Date	Formation	Oil BBL/Day	Oil-Gravity (API)	Gas MCF/Day	Gas-Oil Ratio Cu FT/BBL	Water BBL/Day	Pumpin or Flowing	Initial Shut-In Pressure	Choke Size	Flow Tubing Pressure
Apr 18, 2016	WOODFORD			7152		2266	FLOWING		0	

Completion and Test Data by Producing Formation									
Formation Name: WOODFORD				Code: 319WDFD			Class: GAS		
Spacing Orders				Perforated Intervals					
Order No		Unit Size		From		To			
500648		640		10250		17707			
485990		640							
652249		MULTIUNIT							
650930		640							
Acid Volumes				Fracture Treatments					
78,818 GALS ACID				230,966 BBLS WATER					
				4,721,650 LBS TOTAL PROP					

Formation	Top
WOODFORD	10158
MAYES	9973
CANEY	9733

Were open hole logs run? No

Date last log run:

Were unusual drilling circumstances encountered? No

Explanation:

Other Remarks
NAME CHANGE FROM LEHNHARD 1H-7XX TO LEHNHARD 1H-18X DUE TO SHORTER LATERAL ENDING IN A DIFFERENT SECTION THAN PLANNED. OCC: FLE ORDER HAS NOT BEEN ISSUED. WE HAVE ACCEPTED OPERATORS DATA AS SUBMITTED. IRREGULAR SECTION.

Lateral Holes
Sec: 18 TWP: 5N RGE: 14E County: PITTSBURG SE NW NE SE 2124 FSL 665 FEL of 1/4 SEC Depth of Deviation: 9672 Radius of Turn: 350 Direction: 357 Total Length: 7457 Measured Total Depth: 20335 True Vertical Depth: 9017 End Pt. Location From Release, Unit or Property Line: 2124

FOR COMMISSION USE ONLY
Status: Accepted

**Permit Plat**  
**M & M Land Surveying, Inc.**

520 "E" Street NW. Ardmore, OK. 73401  
Office 580-226-0446 Mobile 580-221-4999 Fax 580-226-7158

API 121-24780

Company Name: Newfield Exploration Mid-Continent, Inc. Lease Name: Lehnhard #1H-7XX  
Section 19 Township 5 North Range 14 East County Pittsburg Oklahoma  
Surface Location 1836' FSL - 1386' FEL Elevation 789'

**ALL SECTION CORNER COORDINATES ARE NAD 27**

Y= 586,827'  
X=2,636,264'

Y= 586,974'  
X=2,641,511'

Y= 581,545'  
X=2,636,368'

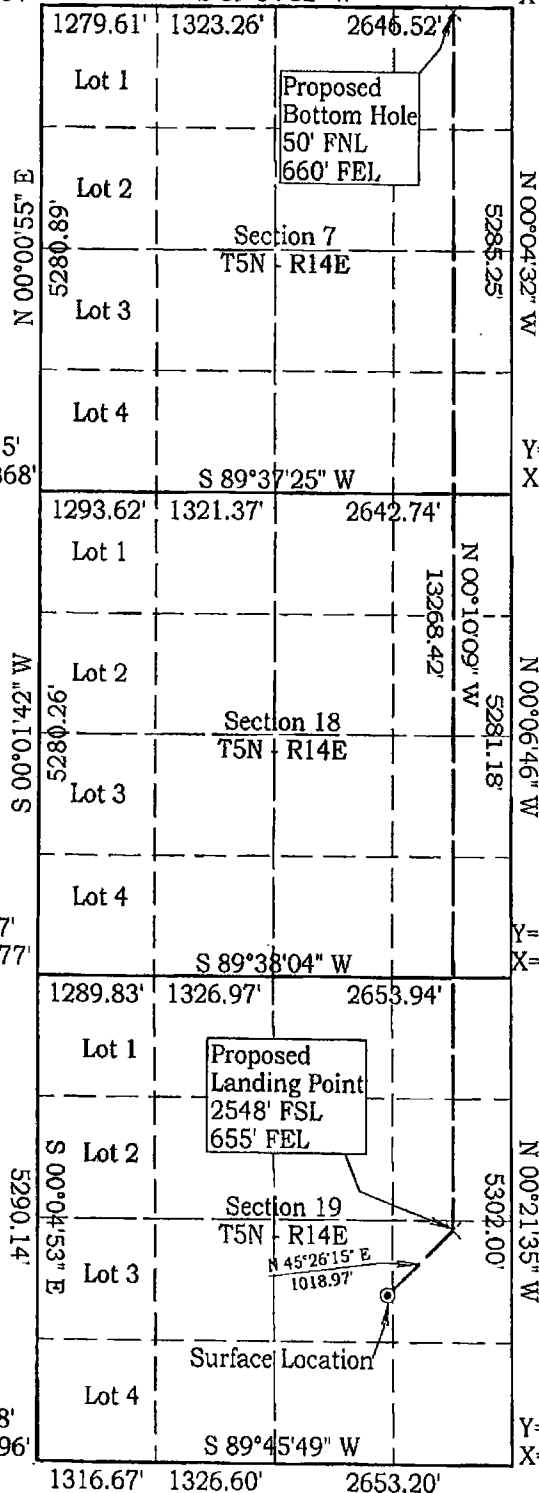
Y= 581,691'  
X=2,641,623'

Y= 576,267'  
X=2,636,477'

Y= 576,411'  
X=2,641,747'

Y= 570,978'  
X=2,636,596'

Y= 571,112'  
X=2,641,890'



Scale: 1" = 2000'  
Invoice #15215  
Date 6/3/15

Coordinates were derived from GPS RTK methods and are only accurate within  $\pm 10$  feet

Location GPS NAD 27  
Oklahoma South  
Surface Location  
Latitude: 34.88902°  
Longitude: 95.86426°  
Y= 572,912'  
X= 2,640,455'

Location GPS NAD 83  
Surface Location  
Latitude: 34.88912°  
Longitude: 95.86453°  
Y= 572,963'  
X= 2,608,858'

*D. Harry McClintick* 10/20/15

D. Harry McClintick, R.P.L.S. # 1367, CA # 3093

This location has been staked according to the best official survey records available to us, but its accuracy is not guaranteed. Please review this plat and notify us immediately of any discrepancy.



# Well Location Plat

M & M Land Surveying, Inc.

520 "E" Street NW. Ardmore, OK. 73401

Office 580-226-0446 Mobile 580-221-4999 Fax 580-226-7158

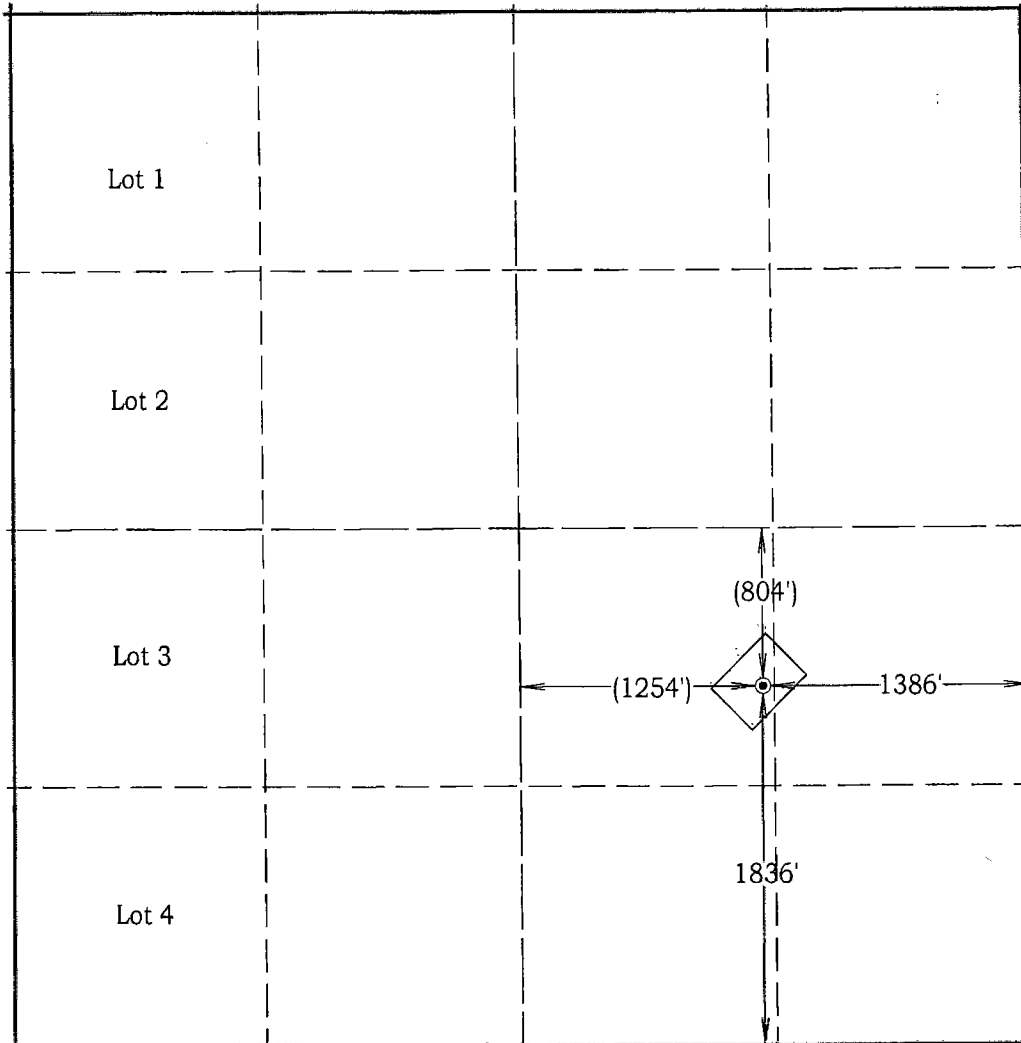
Company Name: Newfield Exploration Mid-Continent, Inc. Lease Name: Lehnhard #1H-7XX

Section 19 Township 5 North Range 14 East County Pittsburg Oklahoma

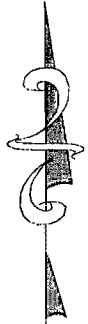
Surface Location 1836' FSL - 1386' FEL Elevation 789' Good Location? Yes

Topography

Location fell on a rocky,  
sloped pasture.



Bearings are based  
on Geodetic North.  
Unless otherwise noted



Scale: 1" = 1000'

Invoice #15215

Date 6/3/15

Elevations of Proposed  
Pad Corners

N/C - 804'

E/C - 779'

S/C - 774'

W/C - 799'

**Coordinates were derived  
from GPS RTK methods  
and are only accurate  
within ±10 feet**

**Location GPS NAD 27  
Oklahoma South**

Surface Location

Latitude: 34.88902°

Longitude: 95.86426°

Y= 572,912'

X = 2,640,455'

**Location NAD 83**

Surface Location

Latitude: 34.88912°

Longitude: 95.86453°

Best Accessibility to Location  
From the North

Distance & Direction From From the Jct. of S.H. #31 and U.S. 270 at McAlester, Ok, go 7 miles West on S.H. #31 to the Northwest corner of Section 19.  
Highway or Town \_\_\_\_\_

## CERTIFICATE:

I, D. Harry McClintick, a Registered Land Surveyor in the state of Oklahoma, do hereby certify that the above described Well Location was surveyed and staked on the ground as shown.

D. Harry McClintick 6/5/15  
D. Harry McClintick, R.P.L.S. # 1367, CA # 3093

This location has been staked according to the best official survey records available to us, but its accuracy is not guaranteed. Please review this plat and notify us immediately of any discrepancy.

The distances shown in parenthesis ( ) are distances based on the quarter section being 2640' and have not been measured.

RECEIVED

JUN 03 2015

REGULATORY



# Section Control Plat

## M & M Land Surveying, Inc.

520 "E" Street NW. Ardmore, OK. 73401  
Office 580-226-0446 Mobile 580-221-4999 Fax 580-226-7158

Company Name: Newfield Exploration Mid-Continent, Inc. Lease Name: Lehnhard #1H-7XX  
Section 19 Township 5 North Range 14 East County Pittsburg Oklahoma  
Surface Location 1836' FSL - 1386' FEL Elevation 789'

Y= 586,827'  
X=2,636,264'

Y= 586,974'  
X=2,641,511'

Y= 581,545'  
X=2,636,368'

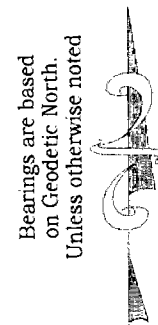
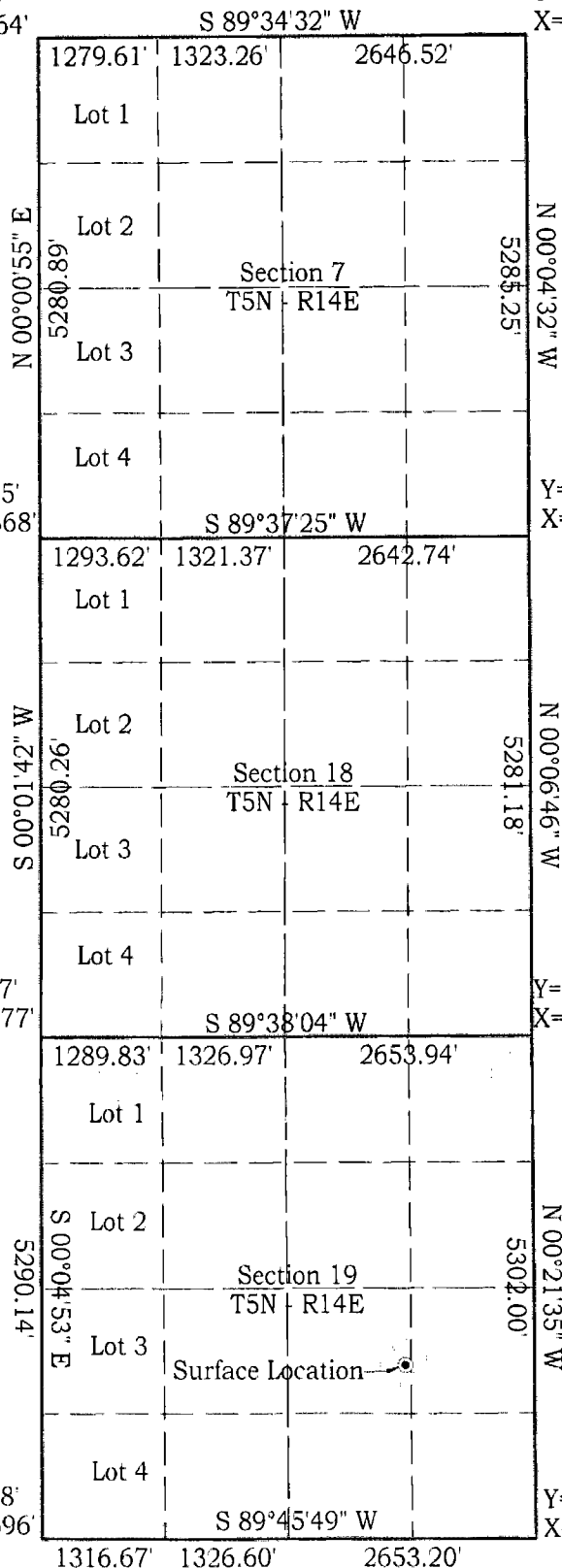
Y= 581,691'  
X=2,641,623'

Y= 576,267'  
X=2,636,477'

Y= 576,411'  
X=2,641,747'

Y= 570,978'  
X=2,636,596'

Y= 571,112'  
X=2,641,890'



Scale: 1" = 2000'  
Invoice #15215  
Date 6/3/15

**Coordinates were derived from GPS RTK methods and are only accurate within ±10 feet**

**Location GPS NAD 27 Oklahoma South**  
Surface Location  
Latitude: 34.88902°  
Longitude: 95.86426°  
Y= 572,912'  
X= 2,640,455'

*D. Harry McClintick 6/5/15*

D. Harry McClintick, R.P.L.S. # 1367, CA # 3093

This location has been staked according to the best official survey records available to us, but its accuracy is not guaranteed. Please review this plat and notify us immediately of any discrepancy.

