

Oklahoma Corporation Commission  
Oil & Gas Conservation Division  
Post Office Box 52000  
Oklahoma City, Oklahoma 73152-2000  
Rule 165: 10-3-25

Form 1002A

API No.: 35105412350000

**Completion Report**

Spud Date: December 09, 2015

OTC Prod. Unit No.:

Drilling Finished Date: December 11, 2015

1st Prod Date: May 16, 2016

Completion Date: April 15, 2016

**Drill Type: STRAIGHT HOLE**

Well Name: WEST TRACT 13-14

Purchaser/Measurer:

Location: NOWATA 13 27N 14E  
SE NE SE NE  
670 FSL 260 FEL of 1/4 SEC  
Derrick Elevation: 0 Ground Elevation: 0

First Sales Date:

Operator: ENDEAVOR ENERGY RESOURCES LP 20857

110 N MARIENFELD ST STE 200  
MIDLAND, TX 79701-4407

| Completion Type |               |
|-----------------|---------------|
| X               | Single Zone   |
|                 | Multiple Zone |
|                 | Commingled    |

| Location Exception |
|--------------------|
| Order No           |
| 632745             |

| Increased Density |
|-------------------|
| Order No          |
| 633366            |

| Casing and Cement |       |        |       |      |      |     |            |
|-------------------|-------|--------|-------|------|------|-----|------------|
| Type              | Size  | Weight | Grade | Feet | PSI  | SAX | Top of CMT |
| CONDUCTOR         | 8.625 | 26#    | J55   | 22   | 3000 | 20  | SURFACE    |
| PRODUCTION        | 5.5   | 17#    | J55   | 1265 | 3000 | 200 | SURFACE    |

| Liner                                  |      |        |       |        |     |     |           |              |
|----------------------------------------|------|--------|-------|--------|-----|-----|-----------|--------------|
| Type                                   | Size | Weight | Grade | Length | PSI | SAX | Top Depth | Bottom Depth |
| There are no Liner records to display. |      |        |       |        |     |     |           |              |

**Total Depth: 1270**

| Packer                                  |              |
|-----------------------------------------|--------------|
| Depth                                   | Brand & Type |
| There are no Packer records to display. |              |

| Plug                                  |           |
|---------------------------------------|-----------|
| Depth                                 | Plug Type |
| There are no Plug records to display. |           |

| Initial Test Data |              |             |                   |             |                         |               |                   |                          |            |                      |
|-------------------|--------------|-------------|-------------------|-------------|-------------------------|---------------|-------------------|--------------------------|------------|----------------------|
| Test Date         | Formation    | Oil BBL/Day | Oil-Gravity (API) | Gas MCF/Day | Gas-Oil Ratio Cu FT/BBL | Water BBL/Day | Pumpin or Flowing | Initial Shut-In Pressure | Choke Size | Flow Tubing Pressure |
| May 15, 2016      | BARTLESVILLE | 7           | 34                |             |                         | 70            | PUMPING           |                          |            |                      |

| Completion and Test Data by Producing Formation |           |                                      |            |
|-------------------------------------------------|-----------|--------------------------------------|------------|
| Formation Name: BARTLESVILLE                    |           | Code: 404BRVL                        | Class: OIL |
| Spacing Orders                                  |           | Perforated Intervals                 |            |
| Order No                                        | Unit Size | From                                 | To         |
| 463367                                          | 160       | 1128                                 | 1162       |
| Acid Volumes                                    |           | Fracture Treatments                  |            |
| 500 GAL 15% HCL                                 |           | 258 BBLS GEL WATER<br>5000# 12/20 SD |            |

| Formation    | Top  |
|--------------|------|
| OSWEGO       | 733  |
| BARTLESVILLE | 1116 |

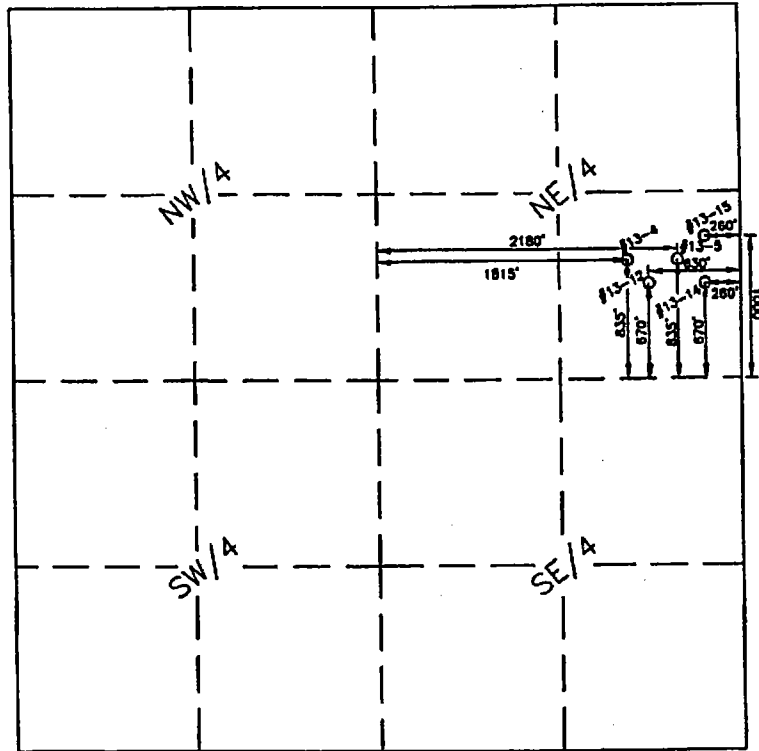
Were open hole logs run? No  
 Date last log run:  
 Were unusual drilling circumstances encountered? No  
 Explanation:

| Other Remarks               |
|-----------------------------|
| NO OPEN HOLE LOGS WERE RAN. |

| FOR COMMISSION USE ONLY |         |
|-------------------------|---------|
| Status: Accepted        | 1133458 |

API 105-41235

SECTION 13, TOWNSHIP 27 NORTH, RANGE 14 EAST  
NOWATA COUNTY, OKLAHOMA.  
(THIS DOES NOT CONSTITUTE A BOUNDARY SURVEY)



DATED: DECEMBER 2, 2014

SCALE: 1" = 1000'

**WEST TRACT 13-4 INJ.:**

835 FEET FROM THE SOUTH LINE AND 1815 FEET FROM THE WEST LINE  
OF THE NE/4 OF SECTION 13, T27N, R14E, NOWATA COUNTY, OKLAHOMA.  
ELEVATION = 940'

LATITUDE = 36°49'28.6"  
LONGITUDE = 95°45'30.8"

**WEST TRACT 13-5 INJ.:**

835 FEET FROM THE SOUTH LINE AND 2180 FEET FROM THE WEST LINE  
OF THE NE/4 OF SECTION 13, T27N, R14E, NOWATA COUNTY, OKLAHOMA.  
ELEVATION = 924'

LATITUDE = 36°49'28.6"  
LONGITUDE = 95°45'26.1"

**WEST TRACT 13-12:**

670 FEET FROM THE SOUTH LINE AND 630 FEET FROM THE EAST LINE  
OF THE NE/4 OF SECTION 13, T27N, R14E, NOWATA COUNTY, OKLAHOMA.  
ELEVATION = 931'

LATITUDE = 36°49'26.9"  
LONGITUDE = 95°45'28.5"

**WEST TRACT 13-14:**

670 FEET FROM THE SOUTH LINE AND 260 FEET FROM THE EAST LINE  
OF THE NE/4 OF SECTION 13, T27N, R14E, NOWATA COUNTY, OKLAHOMA.  
ELEVATION = 885'

LATITUDE = 36°49'26.9"  
LONGITUDE = 95°45'23.9"

**WEST TRACT 13-15:**

1000 FEET FROM THE SOUTH LINE AND 260 FEET FROM THE EAST LINE  
OF THE NE/4 OF SECTION 13, T27N, R14E, NOWATA COUNTY, OKLAHOMA.  
ELEVATION = 938'

LATITUDE = 36°49'30.2"  
LONGITUDE = 95°45'23.9"

CERTIFICATE OF AUTHORIZATION NO. 2434 EXPIRES 6/30/16

**BUCKLAND SURVEYING COMPANY, INC.**  
LAND SURVEYING SERVICES

1682 S.E. WASHINGTON BLVD. BARTLESVILLE, OKLAHOMA 74006 (918) 335-5071