

Oklahoma Corporation Commission
Oil & Gas Conservation Division
Post Office Box 52000
Oklahoma City, Oklahoma 73152-2000
Rule 165: 10-3-25

Form 1002A

API No.: 35151243670001

Completion Report

Spud Date: April 09, 2015

OTC Prod. Unit No.:

Drilling Finished Date: April 18, 2015

1st Prod Date:

Completion Date: April 29, 2016

Drill Type: HORIZONTAL HOLE

Well Name: HORSCH 5-28-16 1H

Purchaser/Measurer:

Location: WOODS 5 28N 16W
NW NE NW NW
280 FNL 770 FWL of 1/4 SEC
Derrick Elevation: 1830 Ground Elevation: 1808

First Sales Date:

Operator: CHESAPEAKE OPERATING LLC 17441
PO BOX 18496
6100 N WESTERN AVE
OKLAHOMA CITY, OK 73154-0496

Completion Type	
<input type="checkbox"/>	Single Zone
<input type="checkbox"/>	Multiple Zone
<input type="checkbox"/>	Commingled

Location Exception
Order No
636271

Increased Density
Order No
636269

Casing and Cement							
Type	Size	Weight	Grade	Feet	PSI	SAX	Top of CMT
SURFACE	9 5/8	36	J-55	1204		415	SURFACE
PRODUCTION	7	26	P-110EC	5673		211	4144

Liner								
Type	Size	Weight	Grade	Length	PSI	SAX	Top Depth	Bottom Depth
LINER	4 1/2	11.6	P-110EC	4678	0	464	5529	10207

Total Depth: 10210

Packer	
Depth	Brand & Type
There are no Packer records to display.	

Plug	
Depth	Plug Type
There are no Plug records to display.	

Initial Test Data										
Test Date	Formation	Oil BBL/Day	Oil-Gravity (API)	Gas MCF/Day	Gas-Oil Ratio Cu FT/BBL	Water BBL/Day	Pumpin or Flowing	Initial Shut-In Pressure	Choke Size	Flow Tubing Pressure
There are no Initial Data records to display.										

Completion and Test Data by Producing Formation		
Formation Name: N/A	Code:	Class: TA

Formation	Top
MISSISSIPPI LIME	5386

Were open hole logs run? No

Date last log run:

Were unusual drilling circumstances encountered? No

Explanation:

Other Remarks
WAITING ON COMPLETION

Lateral Holes
Sec: 5 TWP: 28N RGE: 16W County: WOODS
SE SE SW SW
179 FSL 1267 FWL of 1/4 SEC
Depth of Deviation: 5021 Radius of Turn: 451 Direction: 180 Total Length: 4824
Measured Total Depth: 10210 True Vertical Depth: 5472 End Pt. Location From Release, Unit or Property Line: 179

FOR COMMISSION USE ONLY	
Status: Accepted	1133453

API NO. 35-151-24367
 OTC PROD.
 UNIT NO. N/A

PLEASE TYPE OR USE BLACK INK ONLY
 NOTE:
 Attach copy of original 1002A if recompletion or reentry.

OKLAHOMA CORPORATION COMMISSION
 Oil & Gas Conservation Division
 Post Office Box 52000
 Oklahoma City, Oklahoma 73152-2000
 Rule 165:10-3-25

RECEIVED Form 1002A
 655465 Rev. 2009

MAY 02 2016

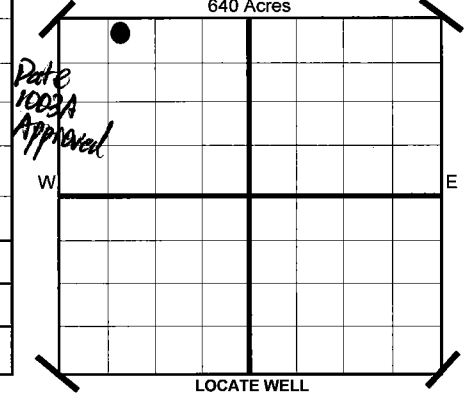
OKLAHOMA CORPORATION COMMISSION

ORIGINAL
 AMENDED
 Reason Amended

COMPLETION REPORT

TYPE OF DRILLING OPERATION
 STRAIGHT HOLE DIRECTIONAL HOLE HORIZONTAL HOLE
 SERVICE WELL
 If directional or horizontal, see reverse for bottom hole location.

SPUD DATE 4/9/2015
 DRLG FINISHED DATE 4/18/2015
 DATE OF WELL COMPLETION 4-29-2016
 1ST PROD DATE N/A
 RECOMP DATE



COUNTY WOODS SEC 5 TWP 28N RGE 16W
 LEASE NAME HORSCH 5-28-16 WELL NO 1H
 SHL NW 1/4 NE 1/4 NW 1/4 NW 1/4 (FNL) 280 FWL OF 1/4 SEC 770
 ELEVATION Derrick Fl 1,830 Ground 1,808
 OPERATOR NAME CHESAPEAKE OPERATING, L.L.C. OTC/OCC OPERATOR NO. 17441
 ADDRESS P.O. BOX 18496
 CITY OKLAHOMA CITY STATE OK ZIP 73154

COMPLETION TYPE

SINGLE ZONE
 MULTIPLE ZONE
 Application Date
 COMMINGLED
 Application Date
 LOCATION EXCEPTION ORDER NO. 636271 (INTERIM)
 INCREASED DENSITY ORDER NO. 636269

CASING & CEMENT (Form 1002C must be attached)

TYPE	SIZE	WEIGHT	GRADE	FEET	PSI	SAX	TOP	
CONDUCTOR								
SURFACE	9 5/8"	36#	J-55	1,204		415	SURFACE	
INTERMEDIATE								
PRODUCTION	7"	26#	P-110EC	5,673		211	4,144	
LINER	4 1/2"	11.6#	P-110EC	5,529-10,207		464	5,529	
							TOTAL DEPTH	10,210

PACKER @ N/A BRAND & TYPE
 PACKER @ BRAND & TYPE

PLUG @ TYPE PLUG @ TYPE
 PLUG @ TYPE PLUG @ TYPE

COMPLETION & TEST DATA BY PRODUCING FORMATION

FORMATION	SPACING & SPACING ORDER NUMBER	CLASS: Oil, Gas, Dry, Inj. Disp, Comm Disp, Svc	PERFORATED INTERVALS	ACID/VOLUME	FRACTURE TREATMENT (Fluids/Prop Amounts)
		Temporarily Abandoned			

AS SUBMITTED

Minimum Gas Allowable (165:10-17-7) Gas Purchaser/Measurer
 OR
 Oil Allowable (165:10-13-3) 1st Sales Date

INITIAL TEST DATA

INITIAL TEST DATE	N/A			
OIL-BBL/DAY				
OIL-GRAVITY (API)				
GAS-MCF/DAY				
GAS-OIL RATIO CU FT/BBL				
WATER-BBL/DAY				
PUMPING OR FLOWING				
INITIAL SHUT-IN PRESSURE				
CHOKE SIZE				
FLOW TUBING PRESSURE				

A record of the formations drilled through, and pertinent remarks are presented on the reverse. I declare that I have knowledge of the contents of this report and am authorized by my organization to make this report, which was prepared by me or under my supervision and direction, with the data and facts stated herein to be true, correct, and complete to the best of my knowledge and belief.

Sara Everett
 SIGNATURE NAME (PRINT OR TYPE) Sara Everett, Regulatory Analyst
 P.O. BOX 18496 OKLAHOMA CITY OK 73154
 ADDRESS CITY STATE ZIP
 DATE 4/28/2016
 PHONE NUMBER 405-848-8000
 EMAIL ADDRESS sara.everett@chk.com

PLEASE TYPE OR USE BLACK INK ONLY
FORMATION RECORD

Give formation names and tops, if available, or descriptions and thickness of formations drilled through. Show intervals cored or drillstem tested.

LEASE NAME HORSCH 5-28-16

WELL NO. 1H

NAMES OF FORMATIONS	TOP
MISSISSIPPI LIME	5,386

FOR COMMISSION USE ONLY

ITD on file YES NO

APPROVED _____ DISAPPROVED _____

2) Reject Codes

Were open hole logs run? yes no

Date Last log was run N/A

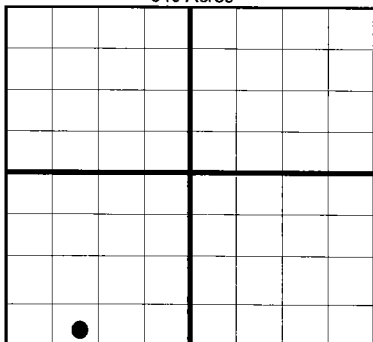
Was CO₂ encountered? yes no at what depths?

Was H₂S encountered? yes no at what depths?

Were unusual drilling circumstances encountered? yes no
If yes, briefly explain.

Other remarks: *WAITING ON COMPLETION

640 Acres

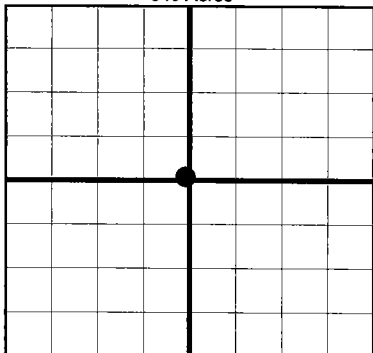


If more than three drainholes are proposed, attach a separate sheet indicating the necessary information.

Direction must be stated in degrees azimuth. Please note, the horizontal drainhole and its end point must be located within the boundaries of the lease or spacing unit.

Directional surveys are required for all drainholes and directional wells.

640 Acres



BOTTOM HOLE LOCATION FOR DIRECTIONAL HOLE

SEC	TWP	RGE	COUNTY				
Spot Location	1/4	1/4	1/4	1/4	Feet From 1/4 Sec Lines	FSL	FWL
Measured Total Depth	True Vertical Depth		BHL From Lease, Unit, or Property Line:				

BOTTOM HOLE LOCATION FOR HORIZONTAL HOLE: (LATERALS)

LATERAL #1

SEC	TWP	RGE	COUNTY				
5	28N	16W	WOODS				
Spot Location	SE 1/4	SE 1/4	SW 1/4	SW 1/4	Feet From 1/4 Sec Lines	FSL 179	FWL 1,267
Depth of Deviation	5,021	Radius of Turn	451	Direction	180	Total Length	4,824
Measured Total Depth	10,210	True Vertical Depth	5,472	BHL From Lease, Unit, or Property Line: 179			

LATERAL #2

SEC	TWP	RGE	COUNTY				
Spot Location	1/4	1/4	1/4	1/4	Feet From 1/4 Sec Lines	FSL	FWL
Depth of Deviation	Radius of Turn		Direction		Total Length		
Measured Total Depth	True Vertical Depth		BHL From Lease, Unit, or Property Line:				

LATERAL #3

SEC	TWP	RGE	COUNTY				
Spot Location	1/4	1/4	1/4	1/4	Feet From 1/4 Sec Lines	FSL	FWL
Depth of Deviation	Radius of Turn		Direction		Total Length		
Measured Total Depth	True Vertical Depth		BHL From Lease, Unit, or Property Line:				