

Oklahoma Corporation Commission  
Oil & Gas Conservation Division  
Post Office Box 52000  
Oklahoma City, Oklahoma 73152-2000  
Rule 165: 10-3-25

Form 1002A

API No.: 35151243660000

**Completion Report**

Spud Date: March 30, 2015

OTC Prod. Unit No.:

Drilling Finished Date: April 08, 2015

1st Prod Date:

Completion Date: April 28, 2016

**Drill Type: HORIZONTAL HOLE**

Well Name: HORSCH 5-28-16 2H

Purchaser/Measurer:

Location: WOODS 5 28N 16W  
NW NE NW NW  
280 FNL 785 FWL of 1/4 SEC  
Derrick Elevation: 1830 Ground Elevation: 1808

First Sales Date:

Operator: CHESAPEAKE OPERATING LLC 17441  
PO BOX 18496  
6100 N WESTERN AVE  
OKLAHOMA CITY, OK 73154-0496

Completion Type	
<input type="checkbox"/>	Single Zone
<input type="checkbox"/>	Multiple Zone
<input type="checkbox"/>	Commingled

Location Exception	
Order No	
636272	

Increased Density	
Order No	
636269	

Casing and Cement							
Type	Size	Weight	Grade	Feet	PSI	SAX	Top of CMT
SURFACE	13 3/8	48	H-40	498		381	SURFACE
INTERMEDIATE	9 5/8	36	J-55	1215		350	SURFACE
PRODUCTION	7	26	P-110EC	5762		211	4200

Liner								
Type	Size	Weight	Grade	Length	PSI	SAX	Top Depth	Bottom Depth
LINER	4 1/2	11.6	P-110EC	4958	0	488	5557	10515

**Total Depth: 10515**

Packer	
Depth	Brand & Type
There are no Packer records to display.	

Plug	
Depth	Plug Type
There are no Plug records to display.	

Initial Test Data										
Test Date	Formation	Oil BBL/Day	Oil-Gravity (API)	Gas MCF/Day	Gas-Oil Ratio Cu FT/BBL	Water BBL/Day	Pumpin or Flowing	Initial Shut-In Pressure	Choke Size	Flow Tubing Pressure
There are no Initial Data records to display.										

Completion and Test Data by Producing Formation		
Formation Name: N/A	Code:	Class: TA

Formation	Top
MISSISSIPPI LIME	5341

Were open hole logs run? No

Date last log run:

Were unusual drilling circumstances encountered? No

Explanation:

Other Remarks
WAITING ON COMPLETION

Lateral Holes
Sec: 5 TWP: 28N RGE: 16W County: WOODS
SW SW SW SE
161 FSL 2396 FEL of 1/4 SEC
Depth of Deviation: 5053 Radius of Turn: 433 Direction: 170 Total Length: 5174
Measured Total Depth: 10515 True Vertical Depth: 5486 End Pt. Location From Release, Unit or Property Line: 161

FOR COMMISSION USE ONLY	
Status: Accepted	1133454

API NO. 35-151-24366  
 OTC PROD.  
 UNIT NO. N/A

PLEASE TYPE OR USE BLACK INK ONLY  
 NOTE:  
 Attach copy of original 1002A if recompletion or reentry.

OKLAHOMA CORPORATION COMMISSION  
 Oil & Gas Conservation Division  
 Post Office Box 52000  
 Oklahoma City, Oklahoma 73152-2000  
 Rule 165:10-3-25

RECEIVED Form 1002A  
 655464 Rev. 2009

MAY 02 2016

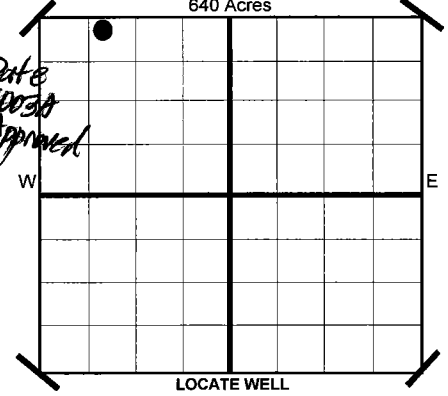
OKLAHOMA CORPORATION COMMISSION

ORIGINAL  
 AMENDED  
 Reason Amended

COMPLETION REPORT

TYPE OF DRILLING OPERATION  
 STRAIGHT HOLE  DIRECTIONAL HOLE  HORIZONTAL HOLE  
 SERVICE WELL  
 If directional or horizontal, see reverse for bottom hole location.

SPUD DATE 3/30/2015  
 DRLG FINISHED DATE 4/8/2015  
 DATE OF WELL COMPLETION 4-28-2016  
 1ST PROD DATE N/A  
 RECOMP DATE



COUNTY WOODS SEC 5 TWP 28N RGE 16W  
 LEASE NAME HORSCH 5-28-16 WELL NO 2H  
 SHL NW 1/4 NE 1/4 NW 1/4 NW 1/4 280 FWL OF 1/4 SEC 785  
 ELEVATION Derrick Fl 1,830 Ground 1,808  
 OPERATOR NAME CHESAPEAKE OPERATING, L.L.C. OTC/OCC OPERATOR NO. 17441  
 ADDRESS P.O. BOX 18496  
 CITY OKLAHOMA CITY STATE OK ZIP 73154

COMPLETION TYPE

SINGLE ZONE  
 MULTIPLE ZONE  
 Application Date  
 COMMINGLED  
 Application Date  
 LOCATION EXCEPTION ORDER NO. 636272 (INTERIM)  
 INCREASED DENSITY ORDER NO. 636269

CASING & CEMENT (Form 1002C must be attached)

TYPE	SIZE	WEIGHT	GRADE	FEET	PSI	SAX	TOP	
CONDUCTOR								
SURFACE	13 3/8"	48#	H-40	498		381	SURFACE	
INTERMEDIATE	9 5/8"	36#	J-55	1,215		350	SURFACE	
PRODUCTION	7"	26#	P-110EC	5,762		211	4,200	
LINER	4 1/2"	11.6#	P-110EC	5,557-10,515		488	5,557	
							TOTAL DEPTH	10,515

PACKER @ N/A BRAND & TYPE  
 PACKER @ \_\_\_\_\_ BRAND & TYPE \_\_\_\_\_

PLUG @ \_\_\_\_\_ TYPE \_\_\_\_\_ PLUG @ \_\_\_\_\_ TYPE \_\_\_\_\_  
 PLUG @ \_\_\_\_\_ TYPE \_\_\_\_\_ PLUG @ \_\_\_\_\_ TYPE \_\_\_\_\_

COMPLETION & TEST DATA BY PRODUCING FORMATION

FORMATION							
SPACING & SPACING ORDER NUMBER							
CLASS: Oil, Gas, Dry, Inj, Disp, Comm Disp, Svc	Temporarily Abandoned						
PERFORATED INTERVALS							
ACID/VOLUME							
FRACTURE TREATMENT (Fluids/Prop Amounts)							

**AS SUBMITTED**

Minimum Gas Allowable (165:10-17-7) Gas Purchaser/Measurer \_\_\_\_\_  
 OR  
 1st Sales Date \_\_\_\_\_

INITIAL TEST DATA

INITIAL TEST DATE	N/A						
OIL-BBL/DAY							
OIL-GRAVITY ( API)							
GAS-MCF/DAY							
GAS-OIL RATIO CU FT/BBL							
WATER-BBL/DAY							
PUMPING OR FLOWING							
INITIAL SHUT-IN PRESSURE							
CHOKE SIZE							
FLOW TUBING PRESSURE							

A record of the formations drilled through, and pertinent remarks are presented on the reverse. I declare that I have knowledge of the contents of this report and am authorized by my organization to make this report, which was prepared by me or under my supervision and direction, with the data and facts stated herein to be true, correct, and complete to the best of my knowledge and belief.

Sara Everett  
 SIGNATURE NAME (PRINT OR TYPE) Sara Everett, Regulatory Analyst  
 P.O. BOX 18496 OKLAHOMA CITY OK 73154  
 ADDRESS CITY STATE ZIP  
 4/27/2016 DATE  
 405-848-8000 PHONE NUMBER  
 sara.everett@chk.com EMAIL ADDRESS

PLEASE TYPE OR USE BLACK INK ONLY  
FORMATION RECORD

Give formation names and tops, if available, or descriptions and thickness of formations drilled through. Show intervals cored or drillstem tested.

LEASE NAME HORSCH 5-28-16

WELL NO. 2H

NAMES OF FORMATIONS	TOP
MISSISSIPPI LIME	5,341

FOR COMMISSION USE ONLY

ITD on file  YES  NO

APPROVED \_\_\_\_\_ DISAPPROVED \_\_\_\_\_

2) Reject Codes

\_\_\_\_\_

\_\_\_\_\_

\_\_\_\_\_

\_\_\_\_\_

Were open hole logs run? \_\_\_\_\_ yes  no

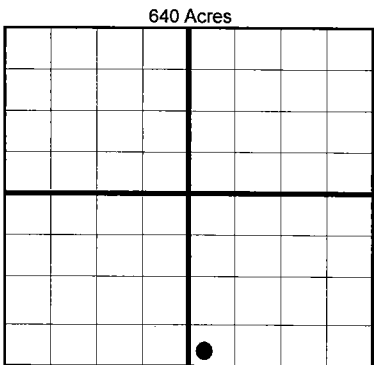
Date Last log was run N/A

Was CO<sub>2</sub> encountered? \_\_\_\_\_ yes  no at what depths?

Was H<sub>2</sub>S encountered? \_\_\_\_\_ yes  no at what depths?

Were unusual drilling circumstances encountered? \_\_\_\_\_ yes  no  
If yes, briefly explain.

Other remarks: \*WAITING ON COMPLETION



**BOTTOM HOLE LOCATION FOR DIRECTIONAL HOLE**

SEC	TWP	RGE	COUNTY				
Spot Location	1/4	1/4	1/4	1/4	Feet From 1/4 Sec Lines	FSL	FWL
Measured Total Depth	True Vertical Depth		BHL From Lease, Unit, or Property Line:				

**BOTTOM HOLE LOCATION FOR HORIZONTAL HOLE: (LATERALS)**

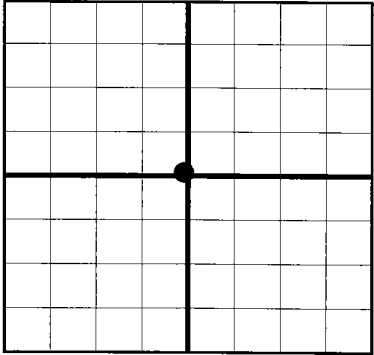
**LATERAL #1**

SEC	TWP	RGE	COUNTY				
5	28N	16W	WOODS				
Spot Location	SW 1/4	SW 1/4	SW 1/4	SE 1/4	Feet From 1/4 Sec Lines	FSL	FEL
Depth of Deviation	5,053	Radius of Turn	433	Direction	170	Total Length	5,174
Measured Total Depth	10,515	True Vertical Depth	5,486	BHL From Lease, Unit, or Property Line: 161			

If more than three drainholes are proposed, attach a separate sheet indicating the necessary information.

Direction must be stated in degrees azimuth. Please note, the horizontal drainhole and its end point must be located within the boundaries of the lease or spacing unit.

**Directional surveys are required for all drainholes and directional wells.**



**LATERAL #2**

SEC	TWP	RGE	COUNTY				
Spot Location	1/4	1/4	1/4	1/4	Feet From 1/4 Sec Lines	FSL	FWL
Depth of Deviation	Radius of Turn		Direction	Total Length			
Measured Total Depth	True Vertical Depth		BHL From Lease, Unit, or Property Line:				

**LATERAL #3**

SEC	TWP	RGE	COUNTY				
Spot Location	1/4	1/4	1/4	1/4	Feet From 1/4 Sec Lines	FSL	FWL
Depth of Deviation	Radius of Turn		Direction	Total Length			
Measured Total Depth	True Vertical Depth		BHL From Lease, Unit, or Property Line:				