

Oklahoma Corporation Commission  
Oil & Gas Conservation Division  
Post Office Box 52000  
Oklahoma City, Oklahoma 73152-2000  
Rule 165: 10-3-25

Form 1002A

API No.: 35011235560000

**Completion Report**

Spud Date: December 12, 2015

OTC Prod. Unit No.: 011-217187

Drilling Finished Date: February 07, 2016

1st Prod Date: April 01, 2016

Completion Date: April 01, 2016

**Drill Type: HORIZONTAL HOLE**

Well Name: MCCRARY 1H-3130X

Purchaser/Measurer: XEC

Location: BLAINE 31 16N 12W  
NW SW SW SE  
650 FSL 2320 FEL of 1/4 SEC  
Derrick Elevation: 0 Ground Elevation: 1678

First Sales Date: 04/01/2016

Operator: CIMAREX ENERGY CO 21194

202 S CHEYENNE AVE STE 1000  
TULSA, OK 74103-3001

Completion Type	
X	Single Zone
	Multiple Zone
	Commingled

Location Exception
Order No
649280

Increased Density
Order No
There are no Increased Density records to display.

Casing and Cement							
Type	Size	Weight	Grade	Feet	PSI	SAX	Top of CMT
CONDUCTOR	20	133	K55	120		27	SURFACE
SURFACE	13 3/8	54.5	J55	1507	2500	930	SURFACE
INTERMEDIATE	9 5/8	40	N-80	9671	4000	790	7000
PRODUCTION	5 1/2	23	P110	20718	8000	2540	6000

Liner								
Type	Size	Weight	Grade	Length	PSI	SAX	Top Depth	Bottom Depth
There are no Liner records to display.								

**Total Depth: 20730**

Packer	
Depth	Brand & Type
There are no Packer records to display.	

Plug	
Depth	Plug Type
There are no Plug records to display.	

Initial Test Data										
Test Date	Formation	Oil BBL/Day	Oil-Gravity (API)	Gas MCF/Day	Gas-Oil Ratio Cu FT/BBL	Water BBL/Day	Pumpin or Flowing	Initial Shut-In Pressure	Choke Size	Flow Tubing Pressure
Apr 09, 2016	MISSISSIPPIAN	422.5	48.3	3024	7157	324	FLOWING	6779	14/64	

Completion and Test Data by Producing Formation			
Formation Name: MISSISSIPPIAN	Code: 359MSSP	Class: OIL	
<b>Spacing Orders</b>		<b>Perforated Intervals</b>	
<b>Order No</b>	<b>Unit Size</b>	<b>From</b>	<b>To</b>
648597	640	11500	20668
<b>Acid Volumes</b>		<b>Fracture Treatments</b>	
There are no Acid Volume records to display.		26807718 GALLONS TOTAL FLUID 26045454 LBS OF SAND	

Formation	Top
BIG LIME	8942
CHEROKEE	9092
INOLA	9630
CHESTER	10405
MERAMEC	11490

Were open hole logs run? No

Date last log run:

Were unusual drilling circumstances encountered? No

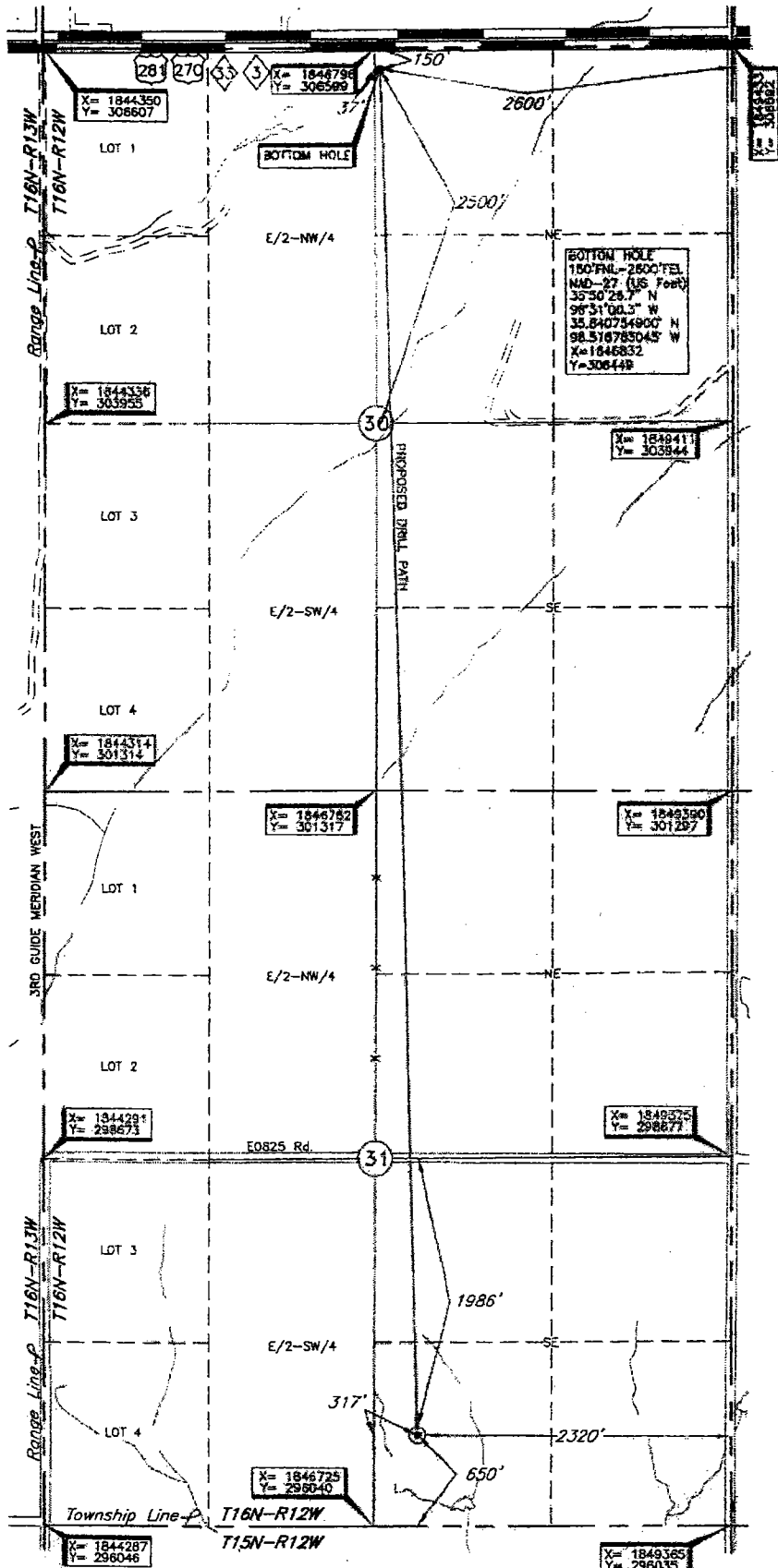
Explanation:

Other Remarks
OCC: FLE ORDER HAS NOT BEEN ISSUED. WE HAVE ACCEPTED OPERATORS DATA AS SUBMITTED. IRREGULAR SECTION.

Lateral Holes
Sec: 30 TWP: 16N RGE: 12W County: BLAINE
NW SW NW NE
954 FNL 2511 FEL of 1/4 SEC
Depth of Deviation: 10943 Radius of Turn: 279 Direction: 6 Total Length: 8625
Measured Total Depth: 20730 True Vertical Depth: 11222 End Pt. Location From Release, Unit or Property Line: 954

FOR COMMISSION USE ONLY
Status: Accepted
1133338

BLAINE County, Oklahoma  
 650' FSL - 2320' FEL Section 31 Township 16N Range 12W 1.M.



Best Accessability to Location From E/4 of Section 31  
 Distance & Direction From Intersection of US. Hwy. 281 & St. Hwy. 8 in Watonga, OK, go .45 miles West on  
 from Hwy Jet or Town US. Hwy. 270, then .415 miles South to gate just South of intersection at E/4 Cor. of Sec. 31-T16N-R12W

Topography & Vegetation Loc. fall in pasture  
 Good Drill Site? Yes  
 Reference Stakes or Alternate Location Stakes Set None

Operator: CMAREX ENERGY CO.  
 Lease Name: MCCRARY  
 Well No. H-3130X

NOTE: The information shown herein is for construction purposes ONLY.

ELEVATION:  
 1678' Gr. at Stake

DATUM: NAD-27  
 LAT: 35°48'50.2"N  
 LONG: 98°30'57.1"W  
 LAT: 35.813946430° N  
 LONG: 98.515862262° W  
 STATE PLANE  
 COORDINATES: (US Feet)  
 ZONE: OK NORTH  
 X: 1847047  
 Y: 2960000

Revision  A Date of Drawing: Oct. 30, 2015  
 Invoice # 252597 Date Staked: Oct. 27, 2015 LC

**CERTIFICATE:**  
 I, Lee K. Goss an Oklahoma Licensed Land Surveyor and an authorized agent of Topographic Land Surveyors of Oklahoma, do hereby certify to the information shown herein.

