

Oklahoma Corporation Commission
Oil & Gas Conservation Division
Post Office Box 52000
Oklahoma City, Oklahoma 73152-2000
Rule 165: 10-3-25

Form 1002A

API No.: 35045235970000

Completion Report

Spud Date: September 30, 2015

OTC Prod. Unit No.:

Drilling Finished Date: October 12, 2015

1st Prod Date: November 08, 2015

Completion Date: October 14, 2015

Drill Type: HORIZONTAL HOLE

Well Name: NEIDENS 10 3H

Purchaser/Measurer: DCP MIDSTREAM

Location: ELLIS 10 20N 26W
SW SW SE SW
280 FSL 1485 FWL of 1/4 SEC
Latitude: 36.130256 Longitude: -99.575653
Derrick Elevation: 0 Ground Elevation: 2439

First Sales Date: 11/08/2015

Operator: JONES ENERGY LLC 21043

807 LAS CIMAS PKWY STE 350
AUSTIN, TX 78746-6193

Completion Type	
X	Single Zone
	Multiple Zone
	Commingled

Location Exception
Order No
645848

Increased Density
Order No
646047

Casing and Cement							
Type	Size	Weight	Grade	Feet	PSI	SAX	Top of CMT
SURFACE	13 3/8	54.5	J55	793		915	SURFACE
INTERMEDIATE	7	26	P110	8443		390	6041

Liner								
Type	Size	Weight	Grade	Length	PSI	SAX	Top Depth	Bottom Depth
LINER	4.5	13.5	P110	4233	0	0	8443	12676

Total Depth: 12676

Packer	
Depth	Brand & Type
There are no Packer records to display.	

Plug	
Depth	Plug Type
There are no Plug records to display.	

Initial Test Data										
Test Date	Formation	Oil BBL/Day	Oil-Gravity (API)	Gas MCF/Day	Gas-Oil Ratio Cu FT/BBL	Water BBL/Day	Pumpin or Flowing	Initial Shut-In Pressure	Choke Size	Flow Tubing Pressure
Nov 09, 2015	CLEVELAND	58	42.7	298	5138	365	PUMPING	980	1/64	150

Completion and Test Data by Producing Formation										
Formation Name: CLEVELAND			Code: 405CLVD			Class: OIL				
Spacing Orders				Perforated Intervals						
Order No		Unit Size		From			To			
566183		640		There are no Perf. Intervals records to display.						
Acid Volumes				Fracture Treatments						
There are no Acid Volume records to display.				56651 BBLs FLUID 2490780 LBS PROPPANT						

Formation	Top
CLEVELEAND	8129

Were open hole logs run? No

Date last log run:

Were unusual drilling circumstances encountered? No

Explanation:

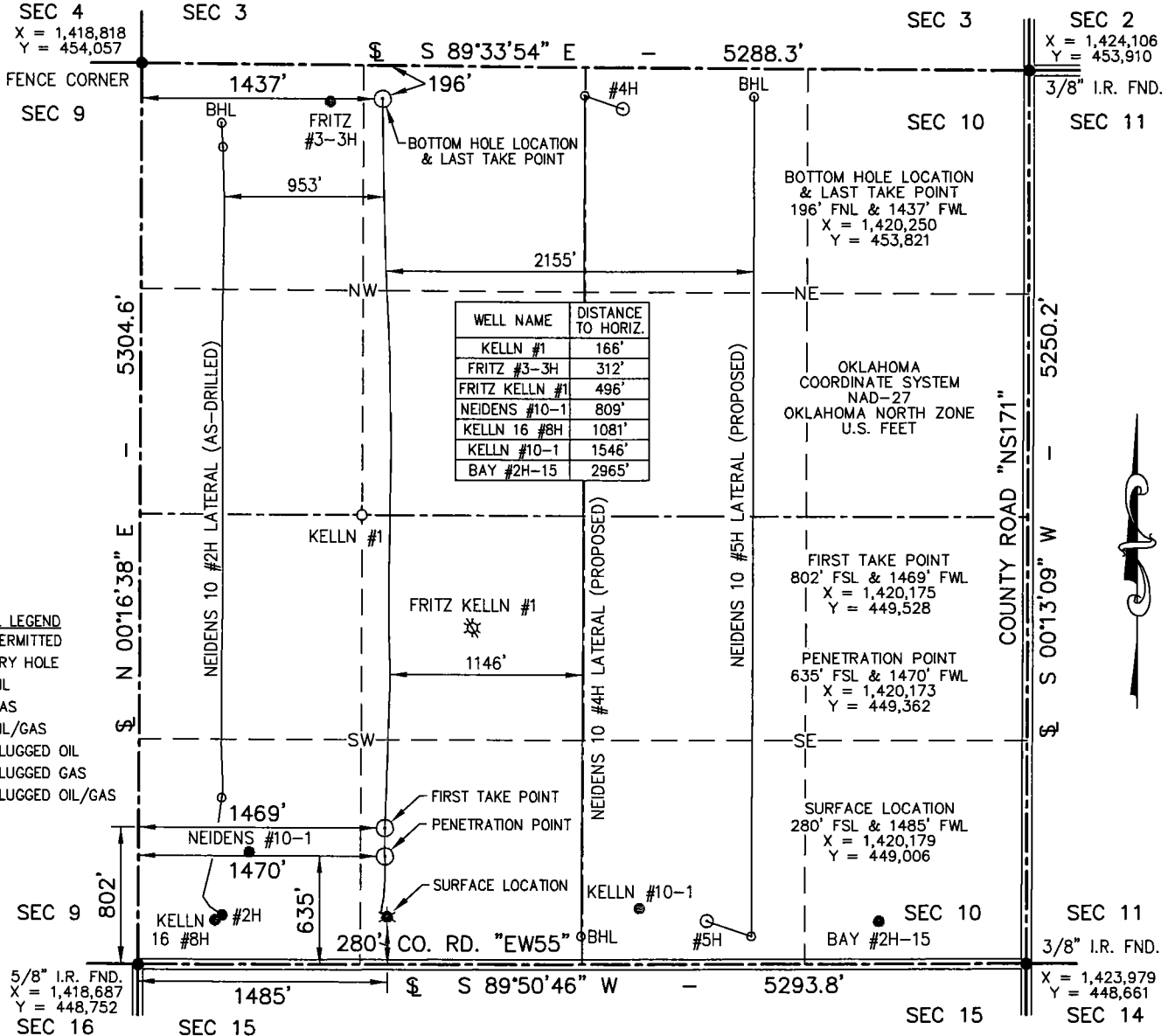
Other Remarks
OCC: FLE ORDER HAS NOT BEEN ISSUED. WE HAVE ACCEPTED OPERATORS DATA AS SUBMITTED. IRREGULAR SECTION. OPEN HOLE COMPLETION FROM 8443' TO TOTAL DEPTH OF 12676'.

Lateral Holes
Sec: 10 TWP: 20N RGE: 26W County: ELLIS
NW NW NE NW
165 FNL 1485 FWL of 1/4 SEC
Depth of Deviation: 7562 Radius of Turn: 650 Direction: 360 Total Length: 4210
Measured Total Depth: 12676 True Vertical Depth: 8111 End Pt. Location From Release, Unit or Property Line: 165

FOR COMMISSION USE ONLY
Status: Accepted
1133376

"AS-DRILLED" WELL LOCATION PLAT

COMPANY JONES ENERGY, LLC LEASE NEIDENS 10 WELL NO. 3H
 SECTION 10 TOWNSHIP 20-N RANGE 26-WIM LOCATION 280' FSL 1485' FWL
 COUNTY ELLIS STATE OKLAHOMA TOPOGRAPHY AND VEGETATION _____ EXISTING PAD _____
 LATITUDE 36°13'02.56" LONGITUDE -99°57'56.53" NAD27 ELEVATION 2439' NGVD29 DATE STAKED 1/14/15
 DIRECTION FROM NEAREST TOWN APPROXIMATELY 6.0 MILES SOUTHWEST OF SHATTUCK, OKLAHOMA



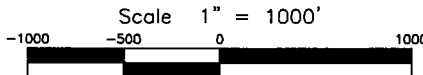
- WELL LEGEND**
- PERMITTED
 - DRY HOLE
 - OIL
 - ☆ GAS
 - ☆ OIL/GAS
 - ⊗ PLUGGED OIL
 - ⊗ PLUGGED GAS
 - ⊗ PLUGGED OIL/GAS

NOTE:

1. This plat is intended for Texas Railroad Commission Permit purposes only and is NOT to be relied upon as a boundary survey and is NOT to be used to convey or establish real property interests.
2. Bearings and dimensions shown are based on Geodetic Azimuth and Ground distance. All X,Y coordinates are based on NAD27, Texas North Zone, U.S. Feet.
3. X,Y Coordinates were derived from GPS RTK methods and are only accurate within +/- 10 feet.
4. As-drilled data shown on this plat was provided by client and/or third party. Information was not nor has not been field verified by Surveyor.

THIS IS TO CERTIFY THAT THE ABOVE PLAT WAS PREPARED FROM FIELD NOTES OF ACTUAL SURVEYS MADE BY MYSELF OR OTHERS UNDER MY SUPERVISION AND THAT THE SAME ARE TRUE AND CORRECT TO THE BEST OF MY KNOWLEDGE AND BELIEF.

SIGNED: _____ DATED: 4/6/16



APEX
SURVEYING & MAPPING, INC.
TEXAS * OKLAHOMA * KANSAS
105 HACKBERRY TRAIL
CANADIAN, TEXAS 79014
806-323-9773
Certificate of Authorization No. 3415, Exp. June 30, 2016

JONES
ENERGY
807 LAS CIMAS PARKWAY • SUITE 350 • AUSTIN, TEXAS 78746

FIELD:	N/A
DRAWN:	CBM
DATE:	4/6/16
CHECKED:	MLS
REVISION:	

JOB NO. 215-015-5