

Oklahoma Corporation Commission  
Oil & Gas Conservation Division  
Post Office Box 52000  
Oklahoma City, Oklahoma 73152-2000  
Rule 165: 10-3-25

Form 1002A

API No.: 35151243540000

**Completion Report**

Spud Date: March 05, 2015

OTC Prod. Unit No.:

Drilling Finished Date: March 28, 2015

1st Prod Date:

Completion Date: April 26, 2016

**Drill Type: HORIZONTAL HOLE**

Well Name: IRENE B 2-28-17 1H

Purchaser/Measurer:

Location: WOODS 2 28N 17W  
SW NW NW NE  
345 FNL 2550 FEL of 1/4 SEC  
Derrick Elevation: 1853 Ground Elevation: 1831

First Sales Date:

Operator: CHESAPEAKE OPERATING LLC 17441  
PO BOX 18496  
6100 N WESTERN AVE  
OKLAHOMA CITY, OK 73154-0496

Completion Type	
<input type="checkbox"/>	Single Zone
<input type="checkbox"/>	Multiple Zone
<input type="checkbox"/>	Commingled

Location Exception
Order No
632550

Increased Density
Order No
632549

Casing and Cement							
Type	Size	Weight	Grade	Feet	PSI	SAX	Top of CMT
SURFACE	13 3/8	48	J-55	465		300	SURFACE
INTERMEDIATE	9 5/8	36	J-55	1207		542	25
PRODUCTION	7	26	P-110EC	5792		218	4191

Liner								
Type	Size	Weight	Grade	Length	PSI	SAX	Top Depth	Bottom Depth
LINER	4 1/2	11.6	P-100	4508	0	515	5477	9985

**Total Depth: 9985**

Packer	
Depth	Brand & Type
There are no Packer records to display.	

Plug	
Depth	Plug Type
There are no Plug records to display.	

Initial Test Data										
Test Date	Formation	Oil BBL/Day	Oil-Gravity (API)	Gas MCF/Day	Gas-Oil Ratio Cu FT/BBL	Water BBL/Day	Pumpin or Flowing	Initial Shut-In Pressure	Choke Size	Flow Tubing Pressure
There are no Initial Data records to display.										

Completion and Test Data by Producing Formation		
Formation Name: N/A	Code:	Class: TA

Formation	Top
MISSISSIPPI	5429

Were open hole logs run? No

Date last log run:

Were unusual drilling circumstances encountered? No

Explanation:

Other Remarks
WAITING ON COMPLETION

Lateral Holes
Sec: 2 TWP: 28N RGE: 17W County: WOODS
SE SE SE SW
179 FSL 2451 FWL of 1/4 SEC
Depth of Deviation: 5081 Radius of Turn: 421 Direction: 181 Total Length: 4556
Measured Total Depth: 9985 True Vertical Depth: 5502 End Pt. Location From Release, Unit or Property Line: 179

FOR COMMISSION USE ONLY	
Status: Accepted	1133391

API NO. 35-151-24354  
 OTC PROD.  
 UNIT NO. N/A

PLEASE TYPE OR USE BLACK INK ONLY  
 NOTE: Attach copy of original 1002A if recompletion or reentry.

OKLAHOMA CORPORATION COMMISSION  
 Oil & Gas Conservation Division  
 Post Office Box 52000  
 Oklahoma City, Oklahoma 73152-2000  
 Rule 165:10-3-25

Form 1002A  
 Rev. 2009

APR 26 2016

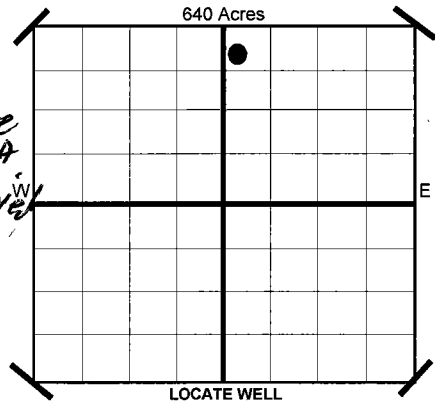
OKLAHOMA CORPORATION COMMISSION

ORIGINAL  
 AMENDED  
 Reason Amended  
 TYPE OF DRILLING OPERATION  
 STRAIGHT HOLE  DIRECTIONAL HOLE  HORIZONTAL HOLE  
 SERVICE WELL

COMPLETION REPORT

If directional or horizontal, see reverse for bottom hole location.  
 COUNTY WOODS SEC 2 TWP 28N RGE 17W  
 LEASE NAME IRENE B 2-28-17 WELL NO. 1H  
 SHL SW 1/4 NW 1/4 NW 1/4 NE 1/4 345 1/4 SEC 2,550  
 ELEVATION Derrick Fl 1,853 Ground 1,831  
 OPERATOR NAME CHESAPEAKE OPERATING, L.L.C. OTC/OCC OPERATOR NO. 17441  
 ADDRESS P.O. BOX 18496  
 CITY OKLAHOMA CITY STATE OK ZIP 73154

SPUD DATE 3/5/2015  
 DRLG FINISHED DATE 3/28/2015  
 DATE OF WELL COMPLETION 4-26-2016  
 1ST PROD DATE N/A  
 RECOMP DATE  
 Longitude (if Known)  
 Date 100-BA Approved



COMPLETION TYPE  
 SINGLE ZONE  
 MULTIPLE ZONE  
 Application Date  
 COMMINGLED  
 Application Date  
 LOCATION EXCEPTION ORDER NO. 632550 (INTERIM)  
 INCREASED DENSITY ORDER NO. 632549

CASING & CEMENT (Form 1002C must be attached)

TYPE	SIZE	WEIGHT	GRADE	FEET	PSI	SAX	TOP	
CONDUCTOR								
SURFACE	13 3/8"	48#	J-55	465		300	SURFACE	
INTERMEDIATE	9 5/8"	36#	J-55	1,207		542	25	
PRODUCTION	7"	26#	P-110EC	5,792		218	4,191	
LINER	4 1/2"	11.6#	P-100	5,477-9,985		515	5,485	
							TOTAL DEPTH	9,985

PACKER @ N/A BRAND & TYPE  
 PACKER @ BRAND & TYPE

PLUG @ TYPE PLUG @ TYPE  
 PLUG @ TYPE PLUG @ TYPE

COMPLETION & TEST DATA BY PRODUCING FORMATION

FORMATION	SPACING & SPACING ORDER NUMBER	CLASS: Oil, Gas, Dry, Inj. Disp, Comm Disp, Svc	PERFORATED INTERVALS	ACID/VOLUME	FRACTURE TREATMENT (Fluids/Prop Amounts)
		Temporarily Abandoned			

**AS SUBMITTED**

Minimum Gas Allowable (165:10-17-7) Gas Purchaser/Measurer  
 OR  
 Oil Allowable (165:10-13-3) 1st Sales Date

INITIAL TEST DATA

INITIAL TEST DATE	N/A				
OIL-BBL/DAY					
OIL-GRAVITY ( API)					
GAS-MCF/DAY					
GAS-OIL RATIO CU FT/BBL					
WATER-BBL/DAY					
PUMPING OR FLOWING					
INITIAL SHUT-IN PRESSURE					
CHOKE SIZE					
FLOW TUBING PRESSURE					

A record of the formations drilled through, and pertinent remarks are presented on the reverse. I declare that I have knowledge of the contents of this report and am authorized by my organization to make this report, which was prepared by me or under my supervision and direction, with the data and facts stated herein to be true, correct, and complete to the best of my knowledge and belief.

Sara Everett  
 SIGNATURE NAME (PRINT OR TYPE) Sara Everett, Regulatory Analyst  
 P.O. BOX 18496 OKLAHOMA CITY OK 73154  
 ADDRESS CITY STATE ZIP  
 4/25/2016 DATE  
 405-848-8000 PHONE NUMBER  
 sara.everett@chk.com EMAIL ADDRESS

**PLEASE TYPE OR USE BLACK INK ONLY**  
FORMATION RECORD

Give formation names and tops, if available, or descriptions and thickness of formations drilled through. Show intervals cored or drillstem tested.

LEASE NAME IRENE B 2-28-17

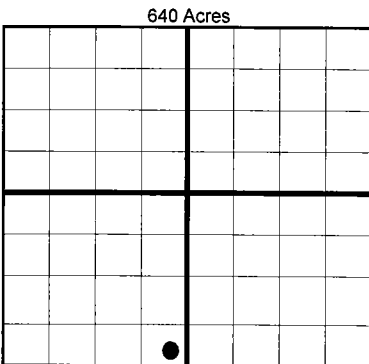
WELL NO. 1H

NAMES OF FORMATIONS	TOP
MISSISSIPPI	5,429

FOR COMMISSION USE ONLY	
ITD on file	<input type="checkbox"/> YES <input type="checkbox"/> NO
APPROVED	DISAPPROVED
2) Reject Codes	
_____	
_____	
_____	
_____	

Were open hole logs run?	yes	<input checked="" type="checkbox"/>	no
Date Last log was run	N/A		
Was CO <sub>2</sub> encountered?	yes	<input checked="" type="checkbox"/>	no at what depths?
Was H <sub>2</sub> S encountered?	yes	<input checked="" type="checkbox"/>	no at what depths?
Were unusual drilling circumstances encountered?	yes	<input checked="" type="checkbox"/>	no
If yes, briefly explain.			

Other remarks: \*WAITING ON COMPLETION



**BOTTOM HOLE LOCATION FOR DIRECTIONAL HOLE**

SEC	TWP	RGE	COUNTY				
Spot Location	1/4	1/4	1/4	1/4	Feet From 1/4 Sec Lines	FSL	FWL
Measured Total Depth	True Vertical Depth		BHL From Lease, Unit, or Property Line:				

**BOTTOM HOLE LOCATION FOR HORIZONTAL HOLE: (LATERALS)**

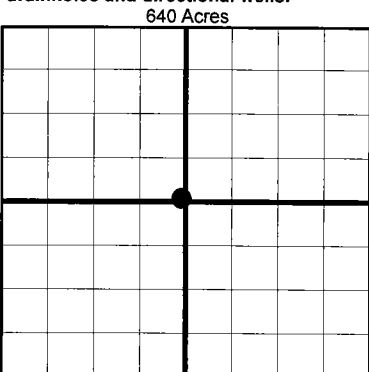
LATERAL #1

SEC	TWP	RGE	COUNTY	WOODS			
Spot Location	SE 1/4	SE 1/4	SE 1/4	SW 1/4	Feet From 1/4 Sec Lines	FSL 179	FWL 2,451
Depth of Deviation	5,081		Radius of Turn	421	Direction	181	Total Length 4,556
Measured Total Depth	9,985		True Vertical Depth	5,502		BHL From Lease, Unit, or Property Line: 179	

If more than three drainholes are proposed, attach a separate sheet indicating the necessary information.

Direction must be stated in degrees azimuth. Please note, the horizontal drainhole and its end point must be located within the boundaries of the lease or spacing unit.

**Directional surveys are required for all drainholes and directional wells.**



**LATERAL #2**

SEC	TWP	RGE	COUNTY				
Spot Location	1/4	1/4	1/4	1/4	Feet From 1/4 Sec Lines	FSL	FWL
Depth of Deviation	Radius of Turn		Direction		Total Length		
Measured Total Depth	True Vertical Depth		BHL From Lease, Unit, or Property Line:				

**LATERAL #3**

SEC	TWP	RGE	COUNTY				
Spot Location	1/4	1/4	1/4	1/4	Feet From 1/4 Sec Lines	FSL	FWL
Depth of Deviation	Radius of Turn		Direction		Total Length		
Measured Total Depth	True Vertical Depth		BHL From Lease, Unit, or Property Line:				