

Oklahoma Corporation Commission
Oil & Gas Conservation Division
Post Office Box 52000
Oklahoma City, Oklahoma 73152-2000
Rule 165: 10-3-25

Form 1002A

API No.: 35151243550000

Completion Report

Spud Date: March 03, 2015

OTC Prod. Unit No.:

Drilling Finished Date: March 18, 2015

1st Prod Date:

Completion Date: April 28, 2016

Drill Type: HORIZONTAL HOLE

Well Name: IRENE B 2-28-17 2H

Purchaser/Measurer:

Location: WOODS 2 28N 17W
W2 NW NW NE
330 FNL 2550 FEL of 1/4 SEC
Derrick Elevation: 1853 Ground Elevation: 1831

First Sales Date:

Operator: CHESAPEAKE OPERATING LLC 17441
PO BOX 18496
6100 N WESTERN AVE
OKLAHOMA CITY, OK 73154-0496

Completion Type	
<input type="checkbox"/>	Single Zone
<input type="checkbox"/>	Multiple Zone
<input type="checkbox"/>	Commingled

Location Exception	
Order No	
	632551

Increased Density	
Order No	
	632549

Casing and Cement							
Type	Size	Weight	Grade	Feet	PSI	SAX	Top of CMT
SURFACE	13 3/8	48	J-55	495		300	SURFACE
INTERMEDIATE	9 5/8	36	J-55	1217		295	SURFACE
PRODUCTION	7	26	P-110EC	5775		217	4115

Liner								
Type	Size	Weight	Grade	Length	PSI	SAX	Top Depth	Bottom Depth
LINER	4 1/2	11.6	P-110EC	4944	0	570	5521	10465

Total Depth: 10465

Packer	
Depth	Brand & Type
There are no Packer records to display.	

Plug	
Depth	Plug Type
There are no Plug records to display.	

Initial Test Data										
Test Date	Formation	Oil BBL/Day	Oil-Gravity (API)	Gas MCF/Day	Gas-Oil Ratio Cu FT/BBL	Water BBL/Day	Pumpin or Flowing	Initial Shut-In Pressure	Choke Size	Flow Tubing Pressure
There are no Initial Data records to display.										

Completion and Test Data by Producing Formation		
Formation Name: N/A	Code:	Class: TA

Formation	Top
MISSISSIPPI	5418

Were open hole logs run? No

Date last log run:

Were unusual drilling circumstances encountered? No

Explanation:

Other Remarks
WAITING ON COMPLETION

Lateral Holes
Sec: 2 TWP: 28N RGE: 17W County: WOODS SW SW SE SE 166 FSL 998 FEL of 1/4 SEC Depth of Deviation: 5081 Radius of Turn: 435 Direction: 171 Total Length: 5047 Measured Total Depth: 10465 True Vertical Depth: 5516 End Pt. Location From Release, Unit or Property Line: 166

FOR COMMISSION USE ONLY	
Status: Accepted	1133374

API NO. 35-151-24355
 OTC PROD.
 UNIT NO. N/A

PLEASE TYPE OR USE BLACK INK ONLY
 NOTE:
 Attach copy of original 1002A if recompletion or reentry.

OKLAHOMA CORPORATION COMMISSION
 Oil & Gas Conservation Division
 Post Office Box 52000
 Oklahoma City, Oklahoma 73152-2000
 Rule 165:10-3-25

1002A
 RECEIVED
 APR 25 2016

ORIGINAL
 AMENDED
 Reason Amended

COMPLETION REPORT

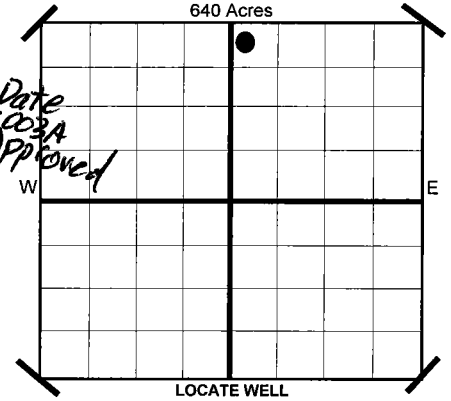
TYPE OF DRILLING OPERATION
 STRAIGHT HOLE DIRECTIONAL HOLE HORIZONTAL HOLE
 SERVICE WELL

If directional or horizontal, see reverse for bottom hole location.

COUNTY WOODS SEC 2 TWP 28N RGE 17W
 LEASE NAME IRENE B 2-28-17 WELL NO 2H
 SHL W2 1/4 NW 1/4 NW 1/4 NE 1/4 330 1/4 SEC 2,550
 ELEVATION Derrick Fl 1,853 Ground 1,831 Latitude (if Known)
 OPERATOR NAME CHESAPEAKE OPERATING, L.L.C. OTC/OCC OPERATOR NO. 17441
 ADDRESS P.O. BOX 18496
 CITY OKLAHOMA CITY STATE OK ZIP 73154

SPUD DATE 3/3/2015
 DRLG FINISHED DATE 3/18/2015
 DATE OF WELL COMPLETION 4-28-2016
 1ST PROD DATE N/A
 RECOMP DATE
 Longitude (if Known)

Date 1002A Approved



COMPLETION TYPE

SINGLE ZONE
 MULTIPLE ZONE
 COMMINGLED
 Application Date
 LOCATION EXCEPTION ORDER NO. 632551 (INTERIM)
 INCREASED DENSITY ORDER NO. 632549

CASING & CEMENT (Form 1002C must be attached)

TYPE	SIZE	WEIGHT	GRADE	FEET	PSI	SAX	TOP	
CONDUCTOR								
SURFACE	13 3/8"	48#	J-55	495		300	SURFACE	
INTERMEDIATE	9 5/8"	36#	J-55	1,217		295	SURFACE	
PRODUCTION	7"	26#	P-110EC	5,775		217	4,115	
LINER	4 1/2"	11.6#	P-110EC	5,521-10465		570	5,521	
							TOTAL DEPTH	10,465

PACKER @ N/A BRAND & TYPE
 PACKER @ _____ BRAND & TYPE _____

PLUG @ _____ TYPE _____ PLUG @ _____ TYPE _____
 PLUG @ _____ TYPE _____ PLUG @ _____ TYPE _____

COMPLETION & TEST DATA BY PRODUCING FORMATION

FORMATION	SPACING & SPACING ORDER NUMBER	CLASS: Oil, Gas, Dry, Inj. Disp, Comm Disp, Svc	PERFORATED INTERVALS	ACID/VOLUME	FRACTURE TREATMENT (Fluids/Prop Amounts)
		Temporarily Abandoned			

AS SUBMITTED

Minimum Gas Allowable (165:10-17-7) OR Gas Purchaser/Measurer
 Oil Allowable (165:10-13-3) 1st Sales Date _____

INITIAL TEST DATA

INITIAL TEST DATE	N/A			
OIL-BBL/DAY				
OIL-GRAVITY (API)				
GAS-MCF/DAY				
GAS-OIL RATIO CU FT/BBL				
WATER-BBL/DAY				
PUMPING OR FLOWING				
INITIAL SHUT-IN PRESSURE				
CHOKE SIZE				
FLOW TUBING PRESSURE				

A record of the formations drilled through, and pertinent remarks are presented on the reverse. I declare that I have knowledge of the contents of this report and am authorized by my organization to make this report, which was prepared by me or under my supervision and direction, with the data and facts stated herein to be true, correct, and complete to the best of my knowledge and belief.

Sara Everett
 SIGNATURE Sara Everett, Regulatory Analyst
 NAME (PRINT OR TYPE)
 P.O. BOX 18496 OKLAHOMA CITY OK 73154
 ADDRESS CITY STATE ZIP
 4/19/2016 405-848-8000
 DATE PHONE NUMBER
 sara.everett@chk.com
 EMAIL ADDRESS

PLEASE TYPE OR USE BLACK INK ONLY
FORMATION RECORD

Give formation names and tops, if available, or descriptions and thickness of formations drilled through. Show intervals cored or drillstem tested.

LEASE NAME IRENE B 2-28-17

WELL NO. 2H

NAMES OF FORMATIONS	TOP
MISSISSIPPI	5,418

FOR COMMISSION USE ONLY

ITD on file YES NO

APPROVED _____ DISAPPROVED _____

2) Reject Codes _____

Were open hole logs run? _____ yes no

Date Last log was run N/A

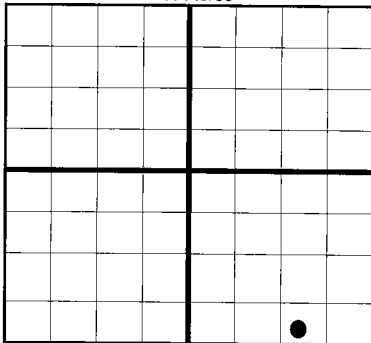
Was CO₂ encountered? _____ yes no at what depths?

Was H₂S encountered? _____ yes no at what depths?

Were unusual drilling circumstances encountered? _____ yes no
If yes, briefly explain.

Other remarks: *WAITING ON COMPLETION

640 Acres

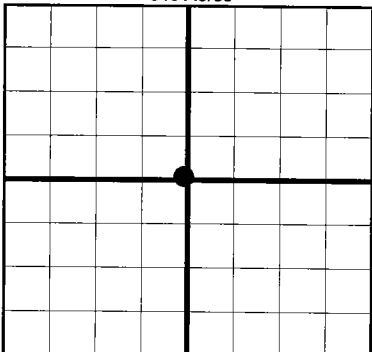


If more than three drainholes are proposed, attach a separate sheet indicating the necessary information.

Direction must be stated in degrees azimuth. Please note, the horizontal drainhole and its end point must be located within the boundaries of the lease or spacing unit.

Directional surveys are required for all drainholes and directional wells.

640 Acres



BOTTOM HOLE LOCATION FOR DIRECTIONAL HOLE

SEC	TWP	RGE	COUNTY				
Spot Location	1/4	1/4	1/4	1/4	Feet From 1/4 Sec Lines	FSL	FWL
Measured Total Depth	True Vertical Depth		BHL From Lease, Unit, or Property Line:				

BOTTOM HOLE LOCATION FOR HORIZONTAL HOLE: (LATERALS)

SEC	TWP	RGE	COUNTY				
2	28N	17W	WOODS				
Spot Location	SW 1/4	SW 1/4	SE 1/4	SE 1/4	Feet From 1/4 Sec Lines	FSL 166	FEL 998
Depth of Deviation	5,081	Radius of Turn	435	Direction	171	Total Length	5,047
Measured Total Depth	True Vertical Depth		BHL From Lease, Unit, or Property Line:				
	10,465	5,516		166			

LATERAL #2

SEC	TWP	RGE	COUNTY				
Spot Location	1/4	1/4	1/4	1/4	Feet From 1/4 Sec Lines	FSL	FWL
Depth of Deviation	Radius of Turn		Direction		Total Length		
Measured Total Depth	True Vertical Depth		BHL From Lease, Unit, or Property Line:				

LATERAL #3

SEC	TWP	RGE	COUNTY				
Spot Location	1/4	1/4	1/4	1/4	Feet From 1/4 Sec Lines	FSL	FWL
Depth of Deviation	Radius of Turn		Direction		Total Length		
Measured Total Depth	True Vertical Depth		BHL From Lease, Unit, or Property Line:				