

Oklahoma Corporation Commission
 Oil & Gas Conservation Division
 Post Office Box 52000
 Oklahoma City, Oklahoma 73152-2000
 Rule 165: 10-3-25

Form 1002A

API No.: 35045235820000

Completion Report

Spud Date: July 03, 2015

OTC Prod. Unit No.: 04521657700000

Drilling Finished Date: July 16, 2015

1st Prod Date: August 17, 2015

Completion Date: July 20, 2015

Drill Type: HORIZONTAL HOLE

Well Name: YOUNG 27 1H

Purchaser/Measurer: REGENCY FIELD SERVICES

Location: ELLIS 27 20N 25W
 S2 SW SW SW
 250 FSL 330 FWL of 1/4 SEC
 Latitude: 36.102491 Longitude: -99.514487
 Derrick Elevation: 0 Ground Elevation: 2487

First Sales Date: 08/17/2015

Operator: JONES ENERGY LLC 21043

807 LAS CIMAS PKWY STE 350
 AUSTIN, TX 78746-6193

Completion Type	
X	Single Zone
	Multiple Zone
	Commingled

Location Exception	
Order No	
	641149
	651009

Increased Density	
Order No	
There are no Increased Density records to display.	

Casing and Cement							
Type	Size	Weight	Grade	Feet	PSI	SAX	Top of CMT
SURFACE	9 5/8	36	J55	887		510	SURFACE
INTERMEDIATE	7	26	P110	8815		435	1923

Liner								
Type	Size	Weight	Grade	Length	PSI	SAX	Top Depth	Bottom Depth
LINER	4.5	13.5	P110	5406	0	435	7646	13052

Total Depth: 13052

Packer	
Depth	Brand & Type
There are no Packer records to display.	

Plug	
Depth	Plug Type
There are no Plug records to display.	

Initial Test Data										
Test Date	Formation	Oil BBL/Day	Oil-Gravity (API)	Gas MCF/Day	Gas-Oil Ratio Cu FT/BBL	Water BBL/Day	Pumpin or Flowing	Initial Shut-In Pressure	Choke Size	Flow Tubing Pressure
Sep 01, 2015	CLEVELAND	165	45	473	2867	405	PUMPING	700	1/64	275

Completion and Test Data by Producing Formation										
Formation Name: CLEVELAND			Code: 405CLVD			Class: OIL				
Spacing Orders				Perforated Intervals						
Order No		Unit Size		From			To			
65115		640		8795			13052			
Acid Volumes				Fracture Treatments						
NONE				61405 BBLS FLUID 2320796 LBS PROPPANT						

Formation	Top
CLEVELAND 8414	0

Were open hole logs run? No

Date last log run:

Were unusual drilling circumstances encountered? No

Explanation:

Other Remarks
OPEN HOLE COMPLETION FROM 8815' TO TOTAL DEPTH OF 13052'. IRREGULAR SECTION.

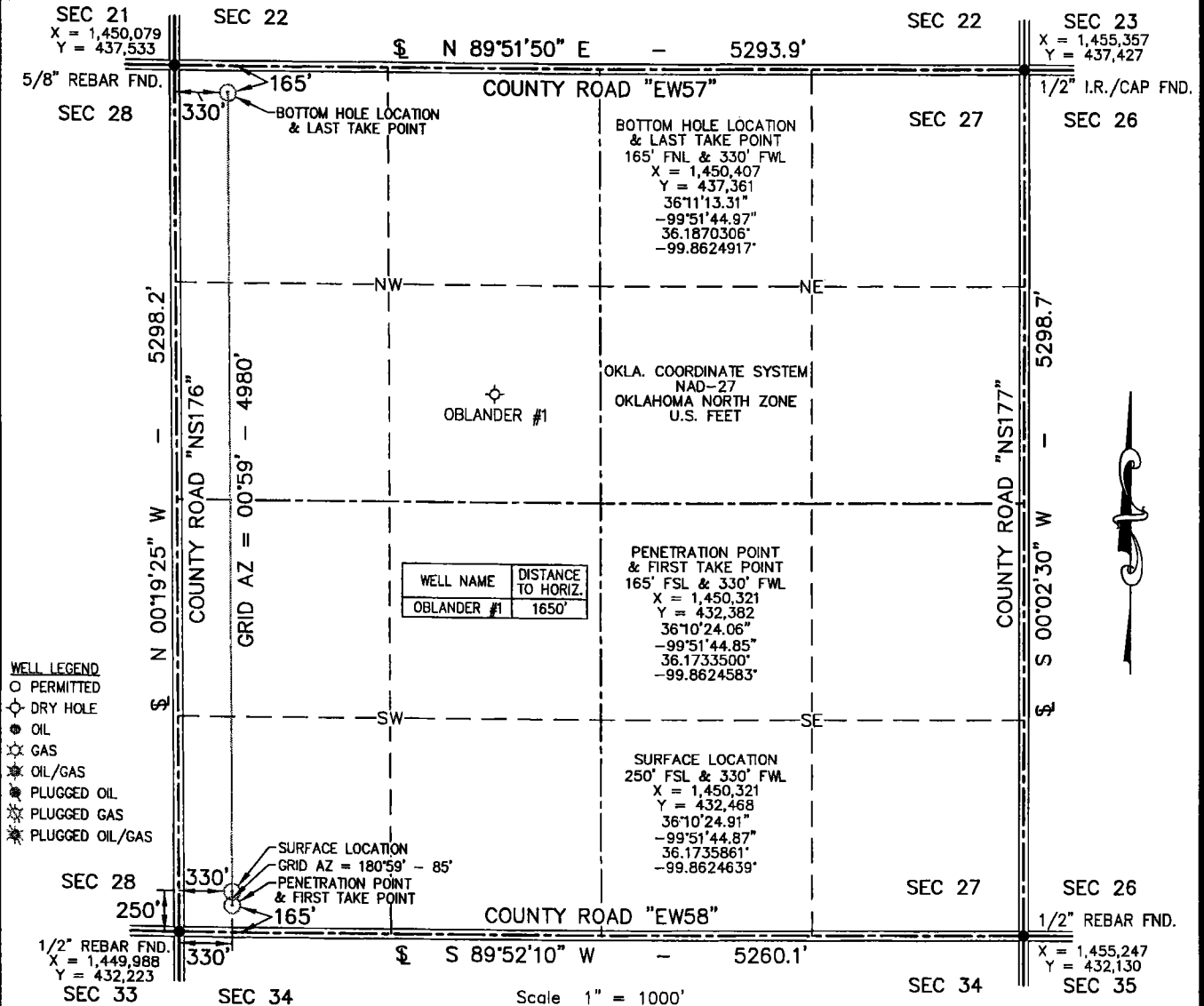
Lateral Holes
Sec: 27 TWP: 20N RGE: 25W County: ELLIS
NE NW NW NW
181 FNL 356 FWL of 1/4 SEC
Depth of Deviation: 7826 Radius of Turn: 650 Direction: 358 Total Length: 4257
Measured Total Depth: 13052 True Vertical Depth: 8411 End Pt. Location From Release, Unit or Property Line: 181

FOR COMMISSION USE ONLY
Status: Accepted
1133339

API-045-23582

PROPOSED NEW WELL LOCATION PLAT


COMPANY JONES ENERGY, LLC LEASE YOUNG 27 WELL NO. 1H
 SECTION 27 TOWNSHIP 20-N RANGE 25-WM LOCATION 250' FSL 330' FWL
 COUNTY ELLIS STATE OKLAHOMA TOPOGRAPHY AND VEGETATION PASTURE
 LATITUDE 36°10'24.91" LONGITUDE -99°51'44.87" NAD27 ELEVATION 2487' NGVD29 DATE STAKED 3/25/15
 DIRECTION FROM NEAREST TOWN APPROXIMATELY 5.5 MILES NORTHWEST OF ARNETT, TEXAS



NOTE:

- This plat is intended for Oklahoma Corporation Commission Permit purposes only and is NOT to be relied upon as a boundary survey and is NOT to be used to convey or establish real property interests.
- Bearings and dimensions shown are based on Geodetic Azimuth and Ground distance. All X,Y coordinates are based on NAD27, Oklahoma North Zone, U.S. Feet.
- X,Y Coordinates were derived from GPS RTK methods and are only accurate within +/- 10 feet.

THIS IS TO CERTIFY THAT THE ABOVE PLAT WAS PREPARED FROM FIELD NOTES OF ACTUAL SURVEYS MADE BY MYSELF OR OTHERS UNDER MY SUPERVISION AND THAT THE SAME ARE TRUE AND CORRECT TO THE BEST OF MY KNOWLEDGE AND BELIEF.

SIGNED:  DATED: 3/27/15



APEX
 SURVEYING & MAPPING, INC.
 TEXAS • OKLAHOMA • KANSAS
 8330 CANYON DRIVE AMARILLO, TEXAS 79119 806-353-7231
 105 HACKBERRY TRAIL CANADIAN, TEXAS 79014 806-323-9773
 Certificate of Authorization No. 3415, Exp. June 30, 2016

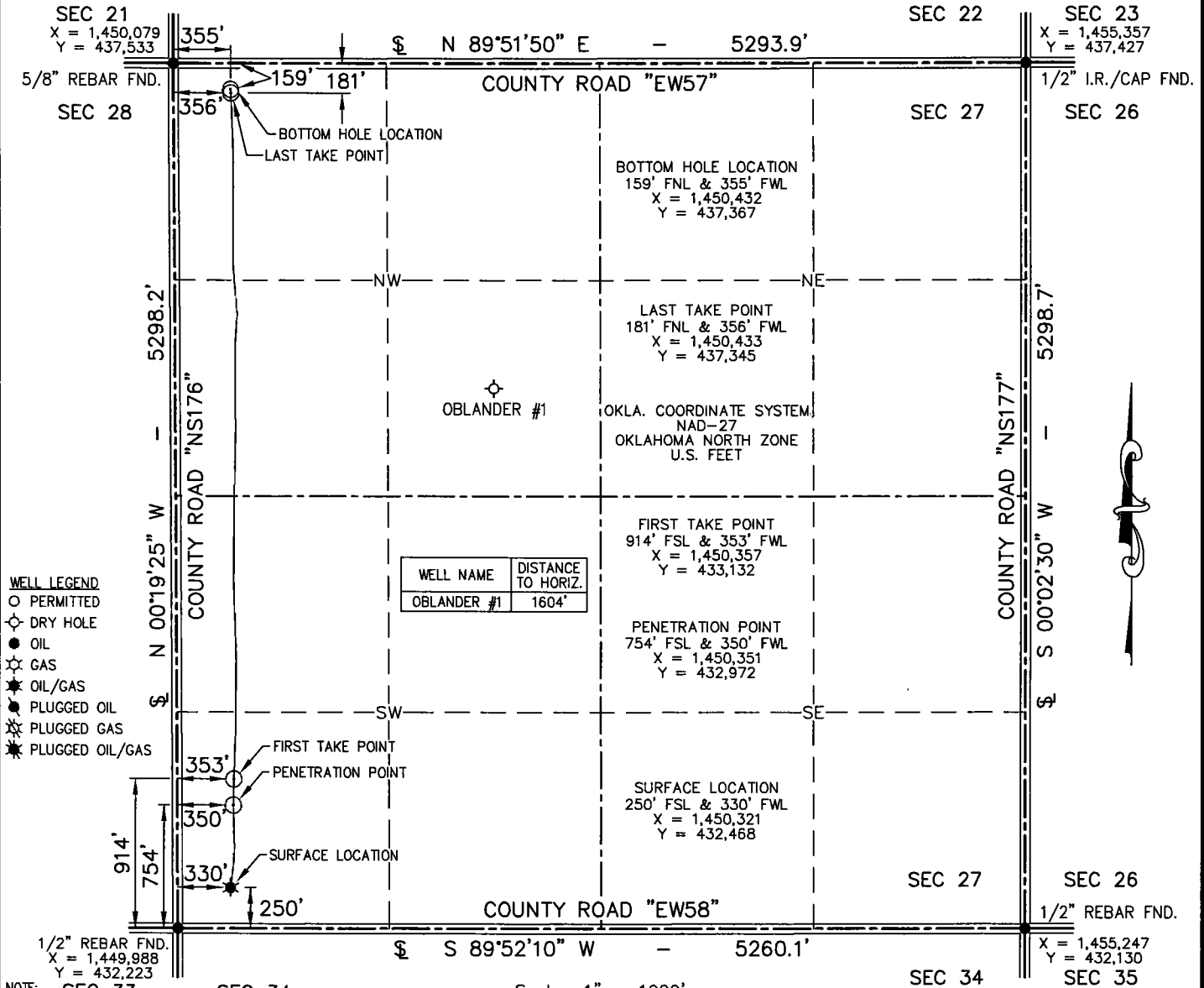
JONES ENERGY
 907 LAS CHIAS PARKWAY SUITE 350 AUSTIN, TEXAS 78748

FIELD:	JT,SF,BJ,GPS
DRAWN:	MLS
DATE:	3/27/15
CHECKED:	CBM
REVISION:	

JOB NO. 215-178-1

"AS-DRILLED" WELL LOCATION PLAT

COMPANY JONES ENERGY, LLC LEASE YOUNG 27 WELL NO. 1H
 SECTION 27 TOWNSHIP 20-N RANGE 25-WIM LOCATION 250' FSL 330' FWL
 COUNTY ELLIS STATE OKLAHOMA TOPOGRAPHY AND VEGETATION EXISTING PAD
 LATITUDE 36°10'24.91" LONGITUDE -99°51'44.87" NAD27 ELEVATION 2487' NGVD29 DATE STAKED 3/25/15
 DIRECTION FROM NEAREST TOWN APPROXIMATELY 5.5 MILES NORTHWEST OF ARNETT, TEXAS



- WELL LEGEND**
- PERMITTED
 - DRY HOLE
 - OIL
 - ☆ GAS
 - ★ OIL/GAS
 - ⊙ PLUGGED OIL
 - ⊙ PLUGGED GAS
 - ⊙ PLUGGED OIL/GAS

- NOTE:**
1. This plat is intended for Oklahoma Corporation Commission Permit purposes only and is NOT to be relied upon as a boundary survey and is NOT to be used to convey or establish real property interests.
 2. Bearings and dimensions shown are based on Geodetic Azimuth and Ground distance. All X,Y coordinates are based on NAD27, Oklahoma North Zone, U.S. Feet.
 3. X,Y Coordinates were derived from GPS RTK methods and are only accurate within +/- 10 feet.
 4. As-drilled data shown on this plat was provided by client and /or third party. Information was not nor has not been field verified by Surveyor.

Scale 1" = 1000'

-1000 -500 0 1000

THIS IS TO CERTIFY THAT THE ABOVE PLAT WAS PREPARED FROM FIELD NOTES OF ACTUAL SURVEYS MADE BY MYSELF OR OTHERS UNDER MY SUPERVISION AND THAT THE SAME ARE TRUE AND CORRECT TO THE BEST OF MY KNOWLEDGE AND BELIEF.

SIGNED: DATED: 10/7/15

APEX
SURVEYING & MAPPING, INC.
TEXAS * OKLAHOMA * KANSAS
105 HACKBERRY TRAIL
CANADIAN, TEXAS 79014
806-323-9773

JONES
807 LAS CIMAS PARKWAY
SUITE 350
AUSTIN, TEXAS 78746

FIELD:	N/A
DRAWN:	CM
DATE:	10/7/15
CHECKED:	MLS
REVISION:	

REGISTERED PROFESSIONAL LAND SURVEYOR
 CURT McPHERSON
 1513
 OKLAHOMA

JOB NO. 215-178-5