

Oklahoma Corporation Commission
Oil & Gas Conservation Division
Post Office Box 52000
Oklahoma City, Oklahoma 73152-2000
Rule 165: 10-3-25

Form 1002A

API No.: 35045235800000

Completion Report

Spud Date: July 07, 2015

OTC Prod. Unit No.: 04521695100000

Drilling Finished Date: July 28, 2015

1st Prod Date: August 22, 2015

Completion Date: July 31, 2015

Drill Type: HORIZONTAL HOLE

Well Name: BAYLESS 25 3H

Purchaser/Measurer: REGENCY FIELD SERVICES

Location: ELLIS 25 20N 24W
SE SE SW SE
250 FSL 1600 FEL of 1/4 SEC
Latitude: 361026.7 Longitude: -99.422985
Derrick Elevation: 0 Ground Elevation: 2410

First Sales Date: 08/22/2015

Operator: JONES ENERGY LLC 21043

807 LAS CIMAS PKWY STE 350
AUSTIN, TX 78746-6193

Completion Type	
X	Single Zone
	Multiple Zone
	Commingled

Location Exception	
Order No	
	641657
	651008

Increased Density	
Order No	
	641896

Casing and Cement							
Type	Size	Weight	Grade	Feet	PSI	SAX	Top of CMT
SURFACE	9 5/8	36	J55	830		1040	SURFACE
INTERMEDIATE	7	26	P110	8850		430	2675

Liner								
Type	Size	Weight	Grade	Length	PSI	SAX	Top Depth	Bottom Depth
LINER	4.5	13.5	P110	4426	0	0	8545	12971

Total Depth: 12971

Packer	
Depth	Brand & Type
There are no Packer records to display.	

Plug	
Depth	Plug Type
There are no Plug records to display.	

Initial Test Data										
Test Date	Formation	Oil BBL/Day	Oil-Gravity (API)	Gas MCF/Day	Gas-Oil Ratio Cu FT/BBL	Water BBL/Day	Pumpin or Flowing	Initial Shut-In Pressure	Choke Size	Flow Tubing Pressure
Aug 31, 2015	CLEVELAND	270	45.2	1072	3970	106	PUMPING	450	1/64	200

Completion and Test Data by Producing Formation										
Formation Name: CLEVELAND			Code: 405CLVD			Class: OIL				
Spacing Orders				Perforated Intervals						
Order No		Unit Size		From			To			
563519		640		8850			12971			
Acid Volumes				Fracture Treatments						
NONE				57709 BBLS FLUID 2478139 LBS PROPPANT						

Formation	Top
CLEVELAND	8488

Were open hole logs run? No

Date last log run:

Were unusual drilling circumstances encountered? No

Explanation:

Other Remarks
OPEN HOLE COMPLETION FROM 8850' TO TOTAL DEPTH OF 12971'. IRREGULAR SECTION.

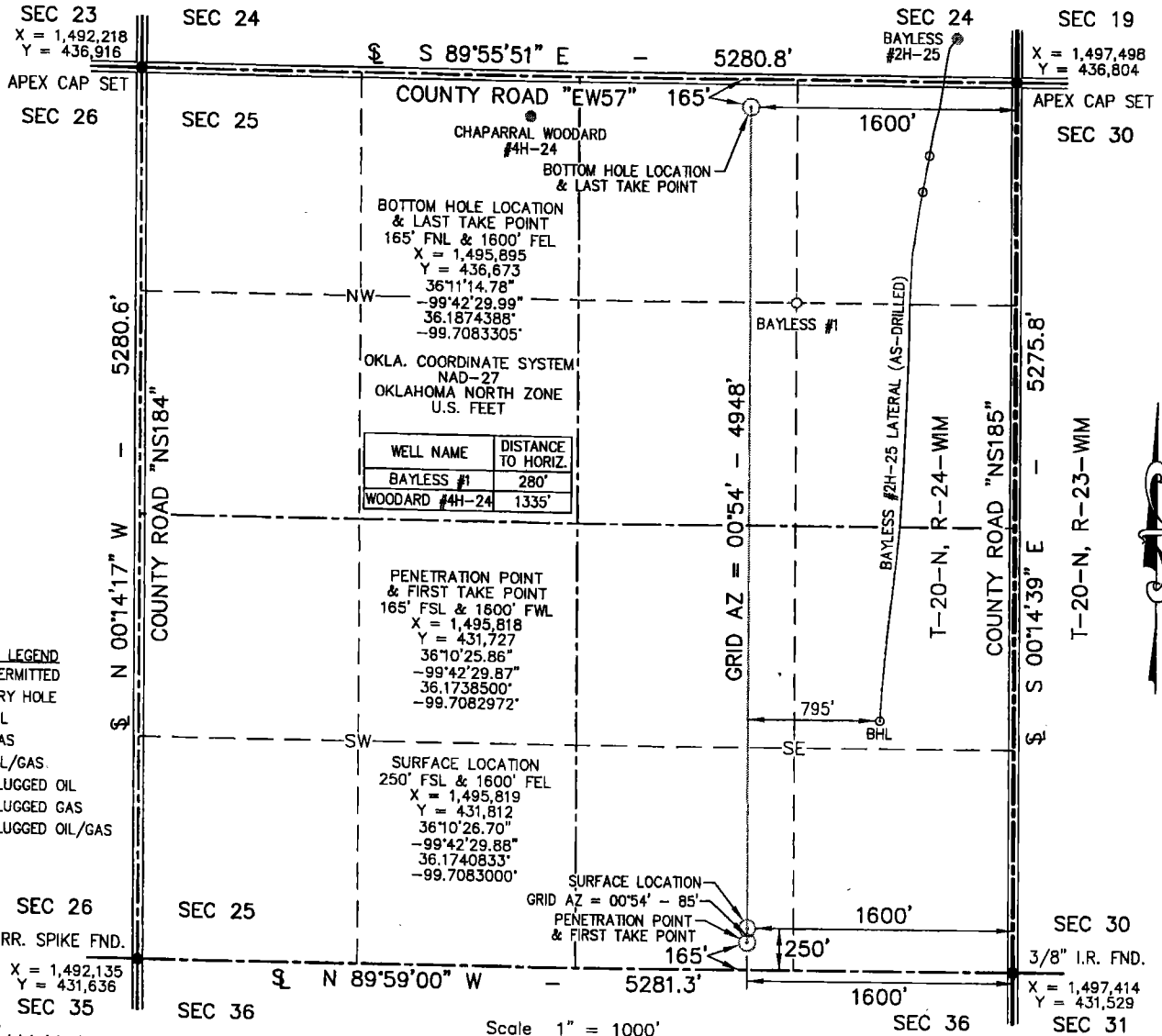
Lateral Holes
Sec: 25 TWP: 20N RGE: 24W County: ELLIS
NE NE NW NE
196 FNL 1568 FEL of 1/4 SEC
Depth of Deviation: 7858 Radius of Turn: 658 Direction: 360 Total Length: 4211
Measured Total Depth: 12971 True Vertical Depth: 8432 End Pt. Location From Release, Unit or Property Line: 196

FOR COMMISSION USE ONLY
Status: Accepted
1133334

API 045-23580

PROPOSED NEW WELL LOCATION PLAT

COMPANY JONES ENERGY, LLC LEASE BAYLESS 25 WELL NO. 3H
 SECTION 25 TOWNSHIP 20-N RANGE 24-WIM LOCATION 250' FSL 1600' FEL
 COUNTY ELLIS STATE OKLAHOMA TOPOGRAPHY AND VEGETATION WINTER WHEAT
 LATITUDE 36°10'26.70" LONGITUDE -99°42'29.88" NAD27 ELEVATION 2410' NGVD29 DATE STAKED 3/27/15
 DIRECTION FROM NEAREST TOWN APPROXIMATELY 4.5 MILES NORTHEAST OF ARNETT, OKLAHOMA



APEX
 SURVEYING & MAPPING, INC.
 TEXAS • OKLAHOMA • KANSAS
 8330 CANYON DRIVE
 AMARILLO, TEXAS 79119
 806-353-7231
 Certificate of Authorization No. 3415, Exp. June 30, 2016

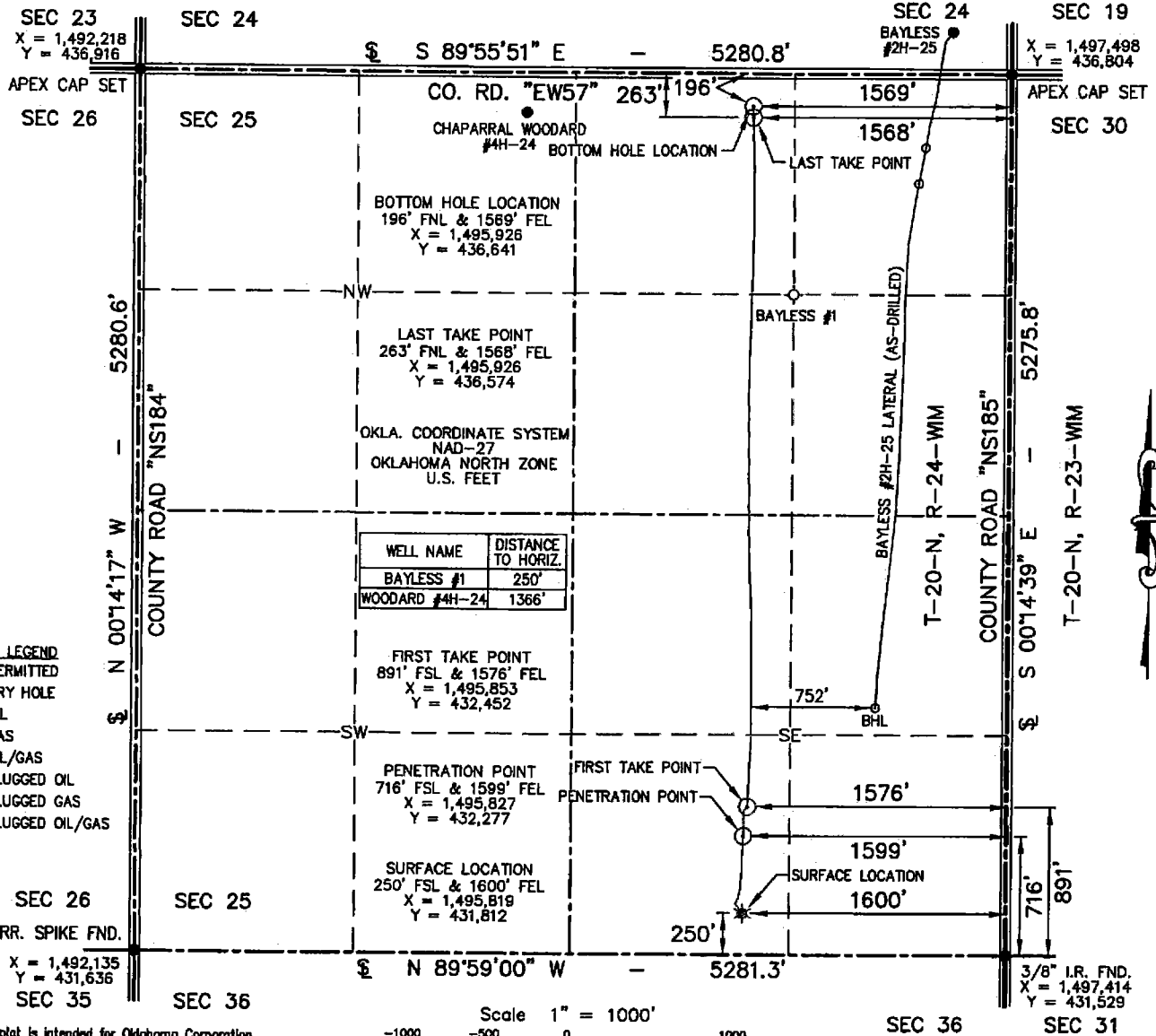
JONES
 807 LAS CHIAS PARKWAY
 SUITE 350
 AUSTIN, TEXAS 78748

FIELD:	JT,SL,GPS
DRAWN:	CM
DATE:	3/30/15
CHECKED:	MLS
REVISION:	

JOB NO. 215-162-1

"AS-DRILLED" WELL LOCATION PLAT

COMPANY JONES ENERGY, LLC LEASE BAYLESS 25 WELL NO. 3H
 SECTION 25 TOWNSHIP 20-N RANGE 24-WM LOCATION 250' FSL 1600' FEL
 COUNTY ELLIS STATE OKLAHOMA TOPOGRAPHY AND VEGETATION _____ EXISTING PAD _____
 LATITUDE 36°10'26.70" LONGITUDE -99°42'29.88" NAD27 ELEVATION 2410' NGVD29 DATE STAKED 3/27/15
 DIRECTION FROM NEAREST TOWN APPROXIMATELY 4.5 MILES NORTHEAST OF ARNETT, OKLAHOMA



- WELL LEGEND**
- PERMITTED
 - ◇ DRY HOLE
 - OIL
 - ⊗ GAS
 - ⊗ OIL/GAS
 - ⊗ PLUGGED OIL
 - ⊗ PLUGGED GAS
 - ⊗ PLUGGED OIL/GAS

- NOTE:**
1. This plat is intended for Oklahoma Corporation Commission Permit purposes only and is NOT to be relied upon as a boundary survey and is NOT to be used to convey or establish real property interests.
 2. Bearings and dimensions shown are based on Geodetic Azimuth and Ground distance. All X,Y coordinates are based on NAD27, Oklahoma North Zone, U.S. Feet.
 3. X,Y Coordinates were derived from GPS RTK methods and are only accurate within +/- 10 feet.
 4. As-drilled data shown on this plat was provided by client and /or third party. Information was not nor has not been field verified by Surveyor.

THIS IS TO CERTIFY THAT THE ABOVE PLAT WAS PREPARED FROM FIELD NOTES OF ACTUAL SURVEYS MADE BY MYSELF OR OTHERS UNDER MY SUPERVISION AND THAT THE SAME ARE TRUE AND CORRECT TO THE BEST OF MY KNOWLEDGE AND BELIEF.

SIGNED: _____ DATED: 10/7/15



APEX
 SURVEYING & MAPPING, INC.
 TEXAS • OKLAHOMA • KANSAS
 105 HACKBERRY TRAIL
 CANADIAN, TEXAS 79014
 806-323-9773

JONES
 807 LAS COMAS PARKWAY
 SUITE 350
 AUSTIN, TEXAS 78746

FIELD:	N/A
DRAWN:	CM
DATE:	10/7/15
CHECKED:	MLS
REVISION:	

JOB NO. 215-162-5