

Oklahoma Corporation Commission
 Oil & Gas Conservation Division
 Post Office Box 52000
 Oklahoma City, Oklahoma 73152-2000
 Rule 165: 10-3-25

Form 1002A

API No.: 35129240640000

Completion Report

Spud Date: October 16, 2015

OTC Prod. Unit No.: 129-216932

Drilling Finished Date: November 05, 2015

1st Prod Date: December 05, 2015

Completion Date: December 05, 2015

Drill Type: HORIZONTAL HOLE

Well Name: WHEELER LEGACY 2H-17

Purchaser/Measurer: ENABLE GATHERING &
 PROCESSING LLC

Location: ROGER MILLS 17 15N 26W
 NE NW NW NE
 165 FNL 2306 FEL of 1/4 SEC
 Derrick Elevation: 0 Ground Elevation: 2400

First Sales Date: 12/05/2015

Operator: LE NORMAN OPERATING LLC 22738

4700 GAILLARDIA PKWY STE 200
 OKLAHOMA CITY, OK 73142-1839

Completion Type	
X	Single Zone
	Multiple Zone
	Commingled

Location Exception	
Order No	
645756	

Increased Density	
Order No	
645707	

Casing and Cement							
Type	Size	Weight	Grade	Feet	PSI	SAX	Top of CMT
SURFACE	9 5/8	36#	J-55	1512		830	SURFACE
INTERMEDIATE	7	26#	P-110	9608		550	2116
PRODUCTION	4 1/2	15.0# & 13.	P-110	15032		1150	4735

Liner								
Type	Size	Weight	Grade	Length	PSI	SAX	Top Depth	Bottom Depth
There are no Liner records to display.								

Total Depth: 15041

Packer	
Depth	Brand & Type
There are no Packer records to display.	

Plug	
Depth	Plug Type
There are no Plug records to display.	

Initial Test Data										
Test Date	Formation	Oil BBL/Day	Oil-Gravity (API)	Gas MCF/Day	Gas-Oil Ratio Cu FT/BBL	Water BBL/Day	Pumpin or Flowing	Initial Shut-In Pressure	Choke Size	Flow Tubing Pressure
Jan 12, 2016	CLEVELAND	20	53.7	561	28050	263	FLOWING		64/64	240

Completion and Test Data by Producing Formation																
Formation Name: CLEVELAND	Code: 405CLVD	Class: GAS														
<table border="1"> <thead> <tr> <th colspan="2">Spacing Orders</th> </tr> <tr> <th>Order No</th> <th>Unit Size</th> </tr> </thead> <tbody> <tr> <td>135140</td> <td>640</td> </tr> <tr> <td>164197</td> <td>640</td> </tr> </tbody> </table>		Spacing Orders		Order No	Unit Size	135140	640	164197	640	<table border="1"> <thead> <tr> <th colspan="2">Perforated Intervals</th> </tr> <tr> <th>From</th> <th>To</th> </tr> </thead> <tbody> <tr> <td>10425</td> <td>14938</td> </tr> </tbody> </table>	Perforated Intervals		From	To	10425	14938
Spacing Orders																
Order No	Unit Size															
135140	640															
164197	640															
Perforated Intervals																
From	To															
10425	14938															
<table border="1"> <thead> <tr> <th>Acid Volumes</th> </tr> </thead> <tbody> <tr> <td>190 BBLS 15% FE ACID</td> </tr> </tbody> </table>		Acid Volumes	190 BBLS 15% FE ACID	<table border="1"> <thead> <tr> <th>Fracture Treatments</th> </tr> </thead> <tbody> <tr> <td>3,162,300 #'S 40/70 WHITE SAND 65,455 BBLS SLICK WATER & 15# LINER GEL</td> </tr> </tbody> </table>	Fracture Treatments	3,162,300 #'S 40/70 WHITE SAND 65,455 BBLS SLICK WATER & 15# LINER GEL										
Acid Volumes																
190 BBLS 15% FE ACID																
Fracture Treatments																
3,162,300 #'S 40/70 WHITE SAND 65,455 BBLS SLICK WATER & 15# LINER GEL																

Formation	Top
HOGSHOOTER	9760
CHECKERBOARD	9965
CLEVELAND	10296

Were open hole logs run? No

Date last log run:

Were unusual drilling circumstances encountered? No

Explanation:

Other Remarks
OCC: FLE ORDER HAS NOT BEEN ISSUED. WE HAVE ACCEPTED OPERATORS DATA AS SUBMITTED. IRREGULAR SECTION.

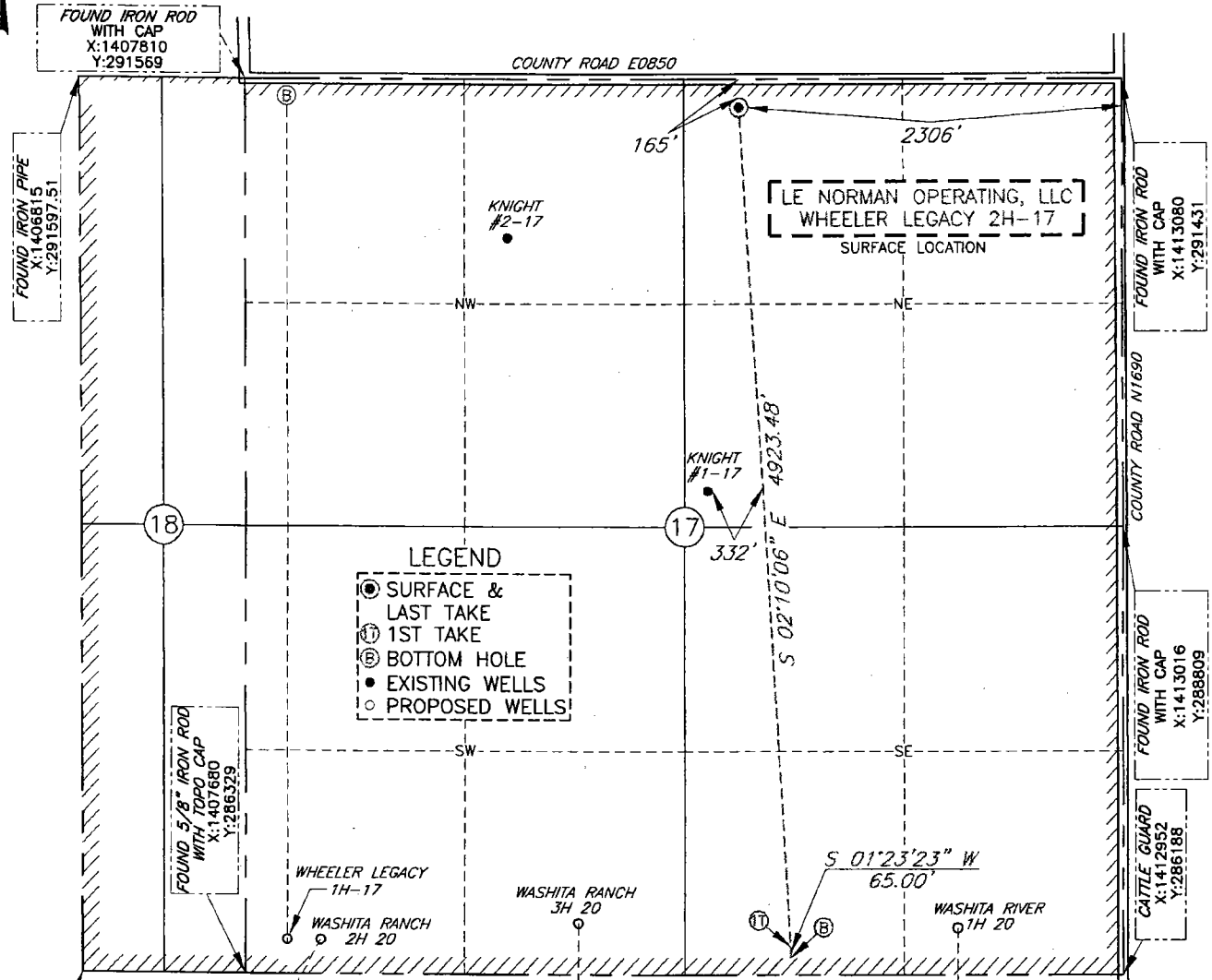
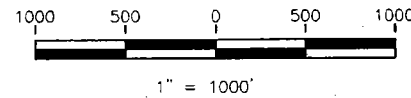
Lateral Holes
Sec: 17 TWP: 15N RGE: 26W County: ROGER MILLS SE SW SW SE 168 FSL 1998 FEL of 1/4 SEC Depth of Deviation: 9755 Radius of Turn: 670 Direction: 180 Total Length: 4616 Measured Total Depth: 15041 True Vertical Depth: 10299 End Pt. Location From Release, Unit or Property Line: 168

FOR COMMISSION USE ONLY
Status: Accepted
1132119

PROPOSED LOCATION PLAT

APT: 129-24004

COMPANY: LE NORMAN OPERATING, LLC LEASE NAME: WHEELER LEGACY 2H 17
 SECTION: 17 TOWNSHIP: 15N RANGE: 26W ELEVATION: 2400'GR.
 COUNTY: ROGER MILLS STATE: OKLAHOMA FOOTAGES: 165'FNL & 2306'FEL
 DIRECTION: ±4 MILES SOUTHWEST OF DURHAM, OK.
 TOPOGRAPHY & VEGETATION: PASTURE
 BEST ACCESSIBILITY: FROM COUNTY ROAD NORTH OF LOCATION



LEGEND

- SURFACE & LAST TAKE
- ① 1ST TAKE
- ⊙ BOTTOM HOLE
- EXISTING WELLS
- PROPOSED WELLS

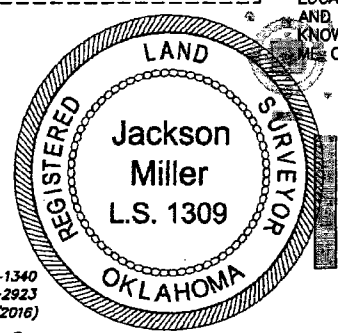
OKLAHOMA NORTH, NAD-27
 SURFACE LOCATION & LAST TAKE PT.
 CALLS: 165'FNL & 2306'FEL
 LATITUDE: 35°47'01.57"
 LONGITUDE: -99°59'11.95"
 X:1410771
 Y:291326

OKLAHOMA NORTH, NAD-27
 1ST TAKE PT.
 CALLS: 165'FSL & 2000'FEL
 LATITUDE: 35°46'12.96"
 LONGITUDE: -99°59'08.46"
 X:1410957
 Y:286407

OKLAHOMA NORTH, NAD-27
 BOTTOM HOLE PT.
 CALLS: 100'FSL & 2000'FEL
 LATITUDE: 35°46'12.31"
 LONGITUDE: -99°59'08.47"
 X:1410955
 Y:286342

I JACKSON MILLER, HEREBY STATE THAT THE LOCATION PLAT SHOWN HEREON IS TRUE AND CORRECT TO THE BEST OF MY KNOWLEDGE AND BELIEF AS SURVEYED BY ME OR UNDER MY DIRECT SUPERVISION.

Jackson Miller
 JACKSON MILLER
 OK RLS #1309
 8/26/15



FILE: ORFS-700-50
 DATE: 8/25/15
 SURVEYED BY: C.HARKINS
 DRAWN BY: J.WILLIAMS
 CHECKED BY: C.LAMBERSON

REVISION:

1	XX	XXXXX
2	XX	XXXXX
3	XX	XXXXX
4	XX	XXXXX
5	XX	XXXXX

SURVEY & MAPPING BY
ENER-TRANS Inc.
 4405 NW 4th Str. Suite 133 Phone: (405) 947-1340
 Oklahoma City, Oklahoma Fax: (405) 947-2923
 73107 (CA-1114 LS 6/30/2016)

OPEN RANGE FIELD SERVICES LLC
 217 N. CUYLER PAMPA, TX 79065
 PH: (806)665-0770 FAX: (806)669-2990

NOTE:
 BEARINGS, DISTANCES & COORDINATES BASED ON OKLAHOMA STATE PLANE COORDINATE SYSTEM GPS OBSERVATION, OK NORTH ZONE, NAD-27 GRID, US SURVEY FEET