

Oklahoma Corporation Commission
Oil & Gas Conservation Division
Post Office Box 52000
Oklahoma City, Oklahoma 73152-2000
Rule 165: 10-3-25

Form 1002A

API No.: 35007256900000

Completion Report

Spud Date: August 11, 2014

OTC Prod. Unit No.: 7214590

Drilling Finished Date: September 03, 2014

1st Prod Date: November 06, 2014

Completion Date: November 04, 2014

Drill Type: HORIZONTAL HOLE

Min Gas Allowable: Yes

Well Name: HOBBLE 1-12H

Purchaser/Measurer: CAMRICK GAS
PROCESSING

Location: BEAVER 13 1N 20E CM
NE NW NE NE
2390 FSL 1680 FWL of 1/4 SEC
Latitude: 36.3327 Longitude: 100.5057642
Derrick Elevation: 2939 Ground Elevation: 2924

First Sales Date:

Operator: WILLIFORD ENERGY COMPANY 7697

6100 S YALE AVE STE 2000
TULSA, OK 74136-1905

Completion Type	
X	Single Zone
	Multiple Zone
	Commingled

Location Exception
Order No
627693

Increased Density
Order No
There are no Increased Density records to display.

Casing and Cement							
Type	Size	Weight	Grade	Feet	PSI	SAX	Top of CMT
CONDUCTOR	20			42		8	SURFACE
SURFACE	9 5/8	36	J-55	2000	1000	745	SURFACE
PRODUCTION	7	26	P-110	6491	1000	225	5000

Liner								
Type	Size	Weight	Grade	Length	PSI	SAX	Top Depth	Bottom Depth
LINER	4 1/2	11.6	N-80	4867	0	0	6372	11239

Total Depth: 11340

Packer	
Depth	Brand & Type
There are no Packer records to display.	

Plug	
Depth	Plug Type
There are no Plug records to display.	

Initial Test Data										
Test Date	Formation	Oil BBL/Day	Oil-Gravity (API)	Gas MCF/Day	Gas-Oil Ratio Cu FT/BBL	Water BBL/Day	Pumpin or Flowing	Initial Shut-In Pressure	Choke Size	Flow Tubing Pressure
Dec 03, 2014	MARMATON	251	39			1137	PUMPING			70

Completion and Test Data by Producing Formation										
Formation Name: MARMATON			Code: 404MRMN			Class: OIL				
Spacing Orders				Perforated Intervals						
Order No	Unit Size			From			To			
621032	640			There are no Perf. Intervals records to display.						
Acid Volumes				Fracture Treatments						
3,692 BARRELS 5% HCL				40,863 BARRELS H2O, 578,206 POUNDS 40/70						

Formation	Top
MARMATON SHALE (HOT SHALE)	6432
MARMATON	6470

Were open hole logs run? No

Date last log run:

Were unusual drilling circumstances encountered? No

Explanation:

Other Remarks
OCC - THIS WELL IS AN OPEN HOLE COMPLETION FROM BOTTOM OF THE 7" CASING AT 6,491' TO TERMINUS AT 11,340'. THE 4 1/2" LINER IS NOT CEMENTED.FLE ORDER HAS NOT BEEN ISSUED. WE HAVE ACCEPTED OPERATORS DATA AS SUBMITTED. IRREGULAR SECTION.

Lateral Holes
Sec: 12 TWP: 1N RGE: 20E County: BEAVER Meridian: CM
NE NW NE NE
2467 FSL 1788 FWL of 1/4 SEC
Depth of Deviation: 5654 Radius of Turn: 1121 Direction: 2 Total Length: 4716
Measured Total Depth: 11340 True Vertical Depth: 6330 End Pt. Location From Release, Unit or Property Line: 173

FOR COMMISSION USE ONLY
Status: Accepted
1127395

AS SUBMITTED

RECEIVED

Form 1002A
Rev. 2009

API NO. 007 25690
OTC PROD. UNIT NO. 7214590

PLEASE TYPE OR USE BLACK INK
NOTE:

Attach copy of original if recompletion or reentry

ORIGINAL
 AMENDED (Reason)

Rule 165:10-3-25

COMPLETION REPORT

OKLAHOMA CORPORATION COMMISSION

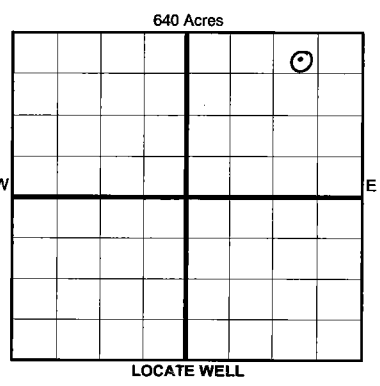
DEC 15 2014

TYPE OF DRILLING OPERATION
 STRAIGHT HOLE DIRECTIONAL HOLE HORIZONTAL HOLE
 SERVICE WELL

SPUD DATE 08/12/2014
DRLG FINISHED DATE 09/03/2014

If directional or horizontal, see reverse for bottom hole location.

COUNTY	BEAVER	SEC	13	TWP	1N	RGE	20ECM	DATE OF WELL COMPLETION	11/04/2014
LEASE NAME	HOBBLE			WELL NO.	1-12H			1st PROD DATE	11/06/2014
NE 1/4 NW 1/4 NE 1/4 NE 1/4	FSL OF 1/4 SEC		2390'	FWL OF 1/4 SEC		1680'		RECOMP DATE	N/A
ELEVATION N Derrick	2939'	Ground	2924'	Latitude (if known)	36.3327		Longitude (if known)	100.5057642	
OPERATOR NAME	WILLIFORD ENERGY COMPANY				OTC/OCC OPERATOR NO.	7697			
ADDRESS	6100 SOUTH YALE AVE, STE. 2000								
CITY	TULSA	STATE	OK	ZIP	74136				



COMPLETION TYPE

<input checked="" type="checkbox"/> SINGLE ZONE	
<input type="checkbox"/> MULTIPLE ZONE	Application Date
<input type="checkbox"/> COMMINGLED	Application Date
LOCATION EXCEPTION ORDER INCREASED DENSITY ORDER NO.	627693

CASING & CEMENT (Form 1002C must be attached)

TYPE	SIZE	WEIGHT	GRADE	FEET	PSI	SAX	TOP OF CMT	
CONDUCTOR	20			42'		8YDS	SURFACE	
SURFACE	9 5/8	36#	J-55	2,000'	1,000	745	SURFACE	
INTERMEDIATE	7	26#	P-110	6,491'	1,000	225	5,000	
PRODUCTION								
LINER	4 1/2	11.6#	N-80	6372-11239 4,867'		NONE		
							TOTAL DEPTH	11,340'

PACKER @ _____ BRAND & TYPE _____ PLUG @ _____ TYPE _____ PLUG @ _____ TYPE _____
 PACKER @ _____ BRAND & TYPE _____ PLUG @ _____ TYPE _____ PLUG @ _____ TYPE _____

COMPLETION & TEST DATA BY PRODUCING FORMATION

FORMATION	MARMATON						
SPACING & SPACING ORDER NUMBER	621032 (640)						Monitor Report to Frac Fours
CLASS: Oil, Gas, Dry, Inj, Disp, Comm Disp, Svc	OIL						
PERFORATED INTERVALS	OPEN HOLE						
	15 STAGES						
	6,866' TO 11,180'						
ACID/VOLUME	5% HCl/3,692 BBLS						
FRACTURE TREATMENT (Fluids/Prop Amounts)	H2O/40,863 BBLS						
	40/70 578,206#						

Min Gas Allowable (165:10-17-7)
OR
 Oil Allowable (165:10-13-3)

Gas Purchaser/Measurer CAMRICK GAS PROC.
First Sales Date NONE

INITIAL TEST DATA

INITIAL TEST DATE	12/3/2014				
OIL-BBL/DAY	251				
OIL-GRAVITY (API)	39				
GAS-MCF/DAY	TSTM				
GAS-OIL RATIO CU FT/BBL	N/A				
WATER-BBL/DAY	1,137				
PUMPING OR FLOWING	PUMPING				
INITIAL SHUT-IN PRESSURE	N/A				
CHOKE SIZE	NONE				
FLOW TUBING PRESSURE	70 PSI				

A record of the formations drilled through and pertinent remarks are presented on the reverse. I declare that I have knowledge of the contents of this report and am authorized by my organization to make this report, which was prepared by me or under my supervision and direction, with the data and facts stated herein to be true, correct, and complete to the best of my knowledge and belief.

<i>Douglas Storts</i> SIGNATURE	P. DOUGLAS STORTS, P.E. NAME (PRINT OR TYPE)	12/12/14 DATE	918-495-2710 PHONE NUMBER
6100 SOUTH YALE AVE, STE. 2000 ADDRESS	TULSA OK 74136 CITY STATE ZIP	pds@willifordenergy.com EMAIL ADDRESS	

PLEASE TYPE OR USE BLACK INK ONLY
FORMATION RECORD

Give formation names and tops, if available, or descriptions and thickness of formations drilled through. Show intervals cored or drillstem tested.

LEASE NAME HOBBLE WELL NO. 1-12H

NAMES OF FORMATIONS	TOP
MARMATON SHALE (HOT SHALE)	6,432'
MARMATON	6,470'

FOR COMMISSION USE ONLY

ITD on file YES NO

APPROVED _____ DISAPPROVED _____

2) Reject Codes

Were open hole logs run? yes no

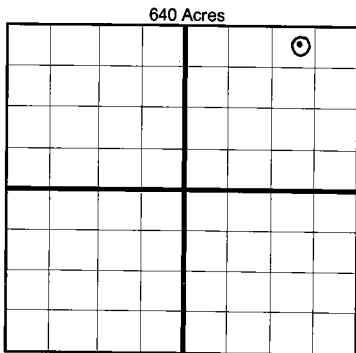
Date Last log was run _____

Was CO₂ encountered? yes no at what depths? _____

Was H₂S encountered? yes no at what depths? _____

Were unusual drilling circumstances encountered? yes no
If yes, briefly explain below _____

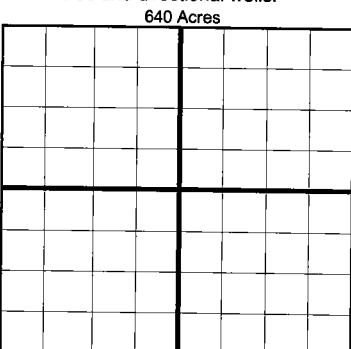
Other remarks: *OCC - This well is an open hole completion from bottom of the 7" casing at 6491' to terminus at 11340'. The 4 1/2" liner is not cemented.*



If more than three drainholes are proposed, attach a separate sheet indicating the necessary information.

Direction must be stated in degrees azimuth. Please note, the horizontal drainhole and its end point must be located within the boundaries of the lease or spacing unit.

Directional surveys are required for all drainholes and directional wells.



BOTTOM HOLE LOCATION FOR DIRECTIONAL HOLE

SEC	TWP	RGE	COUNTY			
Spot Location	1/4	1/4	1/4	Feet From 1/4 Sec Lines	FSL	FWL
Measured Total Depth	True Vertical Depth		BHL From Lease, Unit, or Property Line:			

BOTTOM HOLE LOCATION FOR HORIZONTAL HOLE: (LATERALS)

LATERAL #1

SEC	TWP	RGE	COUNTY						
12	01N	20ECM	BEAVER						
Spot Location	NE 1/4	NW 1/4	NE 1/4	NE 1/4	Feet From 1/4 Sec Lines	FSL	2,467'	FWL	1,788'
Depth of Deviation	5,654' MD		Radius of Turn		1,121'	Direction	2	Total Length	4,716'
Measured Total Depth	11,340'		True Vertical Depth		6,330'	BHL From Lease, Unit, or Property Line: 173' FNL			

LATERAL #2

SEC	TWP	RGE	COUNTY				
Spot Location	1/4	1/4	1/4	1/4	Feet From 1/4 Sec Lines	FSL	FWL
Depth of Deviation	Radius of Turn		Direction		Total Length		
Measured Total Depth	True Vertical Depth		BHL From Lease, Unit, or Property Line:				

LATERAL #3

SEC	TWP	RGE	COUNTY				
Spot Location	1/4	1/4	1/4	1/4	Feet From 1/4 Sec Lines	FSL	FWL
Depth of Deviation	Radius of Turn		Direction		Total Length		
Measured Total Depth	True Vertical Depth		BHL From Lease, Unit, or Property Line:				