

Oklahoma Corporation Commission
Oil & Gas Conservation Division
Post Office Box 52000
Oklahoma City, Oklahoma 73152-2000
Rule 165: 10-3-25

Form 1002A

API No.: 35149217060000

Completion Report

Spud Date: September 01, 2014

OTC Prod. Unit No.: 149-214805

Drilling Finished Date: October 04, 2014

1st Prod Date: October 30, 2014

Completion Date: October 23, 2014

Drill Type: HORIZONTAL HOLE

Min Gas Allowable: Yes

Well Name: MCNATT 18-11-18 1H

Purchaser/Measurer: CHESAPEAKE OPERATING LLC

Location: WASHITA 18 11N 18W
SW SE SE SE
235 FSL 500 FEL of 1/4 SEC
Derrick Elevation: 1816 Ground Elevation: 1786

First Sales Date: 10/30/2014

Operator: CHESAPEAKE OPERATING LLC 17441
PO BOX 18496
6100 N WESTERN AVE
OKLAHOMA CITY, OK 73154-0496

Completion Type	
X	Single Zone
	Multiple Zone
	Commingled

Location Exception
Order No
622374

Increased Density
Order No
622612

Casing and Cement							
Type	Size	Weight	Grade	Feet	PSI	SAX	Top of CMT
SURFACE	9 5/8	40	J-55	1500		670	SURFACE
INTERMEDIATE	7	26	P-110HC	12080		390	9645
PRODUCTION	4 1/2	13.50	HCP-110 / P	16911		560	6830

Liner								
Type	Size	Weight	Grade	Length	PSI	SAX	Top Depth	Bottom Depth
There are no Liner records to display.								

Total Depth: 16911

Packer	
Depth	Brand & Type
There are no Packer records to display.	

Plug	
Depth	Plug Type
There are no Plug records to display.	

Initial Test Data										
Test Date	Formation	Oil BBL/Day	Oil-Gravity (API)	Gas MCF/Day	Gas-Oil Ratio Cu FT/BBL	Water BBL/Day	Pumpin or Flowing	Initial Shut-In Pressure	Choke Size	Flow Tubing Pressure
Nov 23, 2014	DES MOINES GRANITE WASH	147		3127	21272	432	FLOWING		21/64	1299

Completion and Test Data by Producing Formation										
Formation Name: DES MOINES GRANITE WASH			Code: 404DMSGW			Class: GAS				
Spacing Orders				Perforated Intervals						
Order No		Unit Size		From			To			
281578		640		12743			16765			
Acid Volumes				Fracture Treatments						
13,500 GALLONS HCL ACID				46,748 BARRELS FRAC FLUID, 2,078,960 POUNDS PROPPANT						

Formation	Top
DES MOINES GRANITE WASH	12477

Were open hole logs run? No

Date last log run:

Were unusual drilling circumstances encountered? No

Explanation:

Other Remarks
OCC: FLE ORDER HAS NOT BEEN ISSUED. WE HAVE ACCEPTED OPERATORS DATA AS SUBMITTED. IRREGULAR SECTION.

Lateral Holes
Sec: 18 TWP: 11N RGE: 18W County: WASHITA
SE NW NE NE
401 FNL 675 FEL of 1/4 SEC
Depth of Deviation: 12193 Radius of Turn: 366 Direction: 359 Total Length: 4434
Measured Total Depth: 16911 True Vertical Depth: 12559 End Pt. Location From Release, Unit or Property Line: 401

FOR COMMISSION USE ONLY
Status: Accepted
1127316

API NO. 35-149-21706
 OTC PROD.
 UNIT NO. 149-214805

PLEASE TYPE OR USE BLACK INK
 NOTE:
 Attach copy of original 1002A if recompl



RECEIVED
 647 801

Form 1002A
 Rev. 2009

DEC 05 2014

OKLAHOMA CORPORATION
 COMMISSION

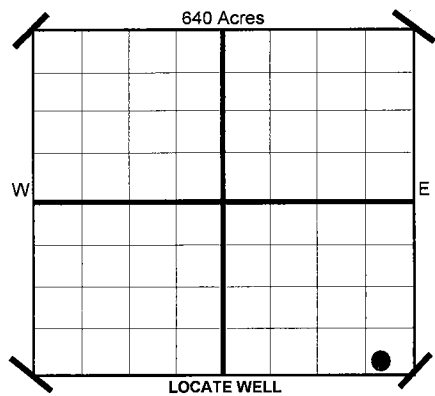
ORIGINAL
 AMENDED
 Reason Amended

COMPLETION REPORT

TYPE OF DRILLING OPERATION
 STRAIGHT HOLE DIRECTIONAL HOLE HORIZONTAL HOLE
 SERVICE WELL
 If directional or horizontal, see reverse for bottom hole location.

COUNTY WASHITA SEC 18 TWP 11N RGE 18W
 LEASE NAME MCNATT 18-11-18 WELL NO. 1H
 SHL SW 1/4 SE 1/4 SE 1/4 SE 1/4 FSL 235 FELDF 1/4 SEC 500
 ELEVATION Derrick Fl 1,816 Ground 1,786
 OPERATOR NAME CHESAPEAKE OPERATING, L.L.C. OTC/OCC OPERATOR NO. 17441
 ADDRESS P.O. BOX 18496
 CITY OKLAHOMA CITY STATE OK ZIP 73154

SPUD DATE 9/1/2014
 DRLG FINISHED DATE 10/4/2014
 DATE OF WELL COMPLETION 10/23/2014
 1ST PROD DATE 10/30/2014
 RECOMP DATE
 Longitude (if Known)



COMPLETION TYPE
 SINGLE ZONE
 MULTIPLE ZONE
 Application Date
 COMMINGLED
 Application Date
 LOCATION EXCEPTION ORDER NO. 622374 (INTERIM)
 INCREASED DENSITY ORDER NO. 622612

CASING & CEMENT (Form 1002C must be attached)

TYPE	SIZE	WEIGHT	GRADE	FEET	PSI	SAX	TOP
CONDUCTOR							
SURFACE	9 5/8"	40#	J-55	1,500		670	SURFACE
INTERMEDIATE I	7"	26#	P-110HC	12,080		390	9,645
INTERMEDIATE II							
PRODUCTION	4 1/2"	13.50#	HCP-110,P110-HC	16,911		560	6,830
							16,911

PACKER @ _____ BRAND & TYPE _____ PLUG @ _____ TYPE _____ PLUG @ _____ TYPE _____
 PACKER @ _____ BRAND & TYPE _____ PLUG @ _____ TYPE _____ PLUG @ _____ TYPE _____

COMPLETION & TEST DATA BY PRODUCING FORMATION *404DM56W*

FORMATION	DES MOINES GRANITE WASH								
SPACING & SPACING ORDER NUMBER	640 281578								
CLASS: Oil, Gas, Dry, Inj. Disp, Comm Disp, Svc	GAS								
PERFORATED INTERVALS	12,743-16,765								
ACID/VOLUME	HCL Acid 13,500 GALS								
FRACTURE TREATMENT (Fluids/Prop Amounts)	Frac Fluid 46,748 BBLs Proppant 2,078,960 LBS								

Monitor Report to Frac Focus

Minimum Gas Allowable (165-10-17-7) Gas Purchaser/Measurer Chesapeake Operating, L.L.C.
 OR 1st Sales Date 10/30/2014
 Oil Allowable (165-10-13-3)

INITIAL TEST DATA

INITIAL TEST DATE	11/23/2014			
OIL-BBL/DAY	147			
OIL-GRAVITY (API)				
GAS-MCF/DAY	3,127			
GAS-OIL RATIO CU FT/BBL	21,272			
WATER-BBL/DAY	432			
PUMPING OR FLOWING	FLOWING			
INITIAL SHUT-IN PRESSURE				
CHOKE SIZE	21/64			
FLOW TUBING PRESSURE	1,299 (FCP)			

A record of the formations drilled through, and pertinent remarks are presented on the reverse. I declare that I have knowledge of the contents of this report and am authorized by my organization to make this report, which was prepared by me or under my supervision and direction, with the data and facts stated herein to be true, correct, and complete to the best of my knowledge and belief.

Jeffrey Bull SIGNATURE NAME (PRINT OR TYPE) Jeffrey Bull - REGULATORY OPERATIONS MANAGER
 DATE 12/2/2014 PHONE NUMBER 405-848-8000
 ADDRESS P.O. BOX 18496 CITY OKLAHOMA CITY STATE OK ZIP 73154
 EMAIL ADDRESS jp.powell@chk.com

PLEASE TYPE OR USE BLACK INK ONLY
FORMATION RECORD

Give formation names and tops, if available, or descriptions and thickness of formations drilled through. Show intervals cored or drillstem tested.

LEASE NAME MCNATT 18-11-18

WELL NO. 1H

NAMES OF FORMATIONS	TOP
DES MOINES GRANITE WASH	12,477

FOR COMMISSION USE ONLY

ITD on file YES NO

APPROVED _____ DISAPPROVED _____

2) Reject Codes

Were open hole logs run? yes no

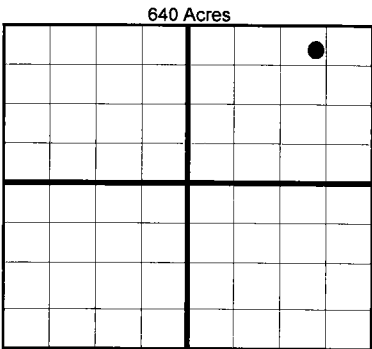
Date Last log was run N/A

Was CO₂ encountered? yes no at what depths?

Was H₂S encountered? yes no at what depths?

Were unusual drilling circumstances encountered? yes no
If yes, briefly explain.

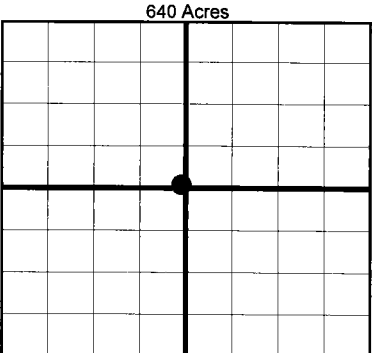
Other remarks:



If more than three drainholes are proposed, attach a separate sheet indicating the necessary information.

Direction must be stated in degrees azimuth. Please note, the horizontal drainhole and its end point must be located within the boundaries of the lease or spacing unit.

Directional surveys are required for all drainholes and directional wells.



BOTTOM HOLE LOCATION FOR DIRECTIONAL HOLE

SEC	TWP	RGE	COUNTY							
Spot Location				1/4	1/4	1/4	1/4	Feet From 1/4 Sec Lines	FSL	FWL
Measured Total Depth				True Vertical Depth		BHL From Lease, Unit, or Property Line:				

BOTTOM HOLE LOCATION FOR HORIZONTAL HOLE: (LATERALS)

SEC	TWP	RGE	COUNTY											
18	11N	18W	WASHITA	SE 1/4			NW 1/4			NE 1/4				
Spot Location				SE 1/4		NW 1/4		NE 1/4		NE 1/4		Feet From 1/4 Sec Lines	FNL 401	FEL 675
Depth of Deviation				12,193		Radius of Turn		366		Direction		0		Total Length
Measured Total Depth				16,911		True Vertical Depth		12,559		BHL From Lease, Unit, or Property Line:		401		

LATERAL #2

SEC	TWP	RGE	COUNTY								
Spot Location				1/4	1/4	1/4	1/4	Feet From 1/4 Sec Lines	FSL	FWL	
Depth of Deviation				Radius of Turn		Direction		Total Length			
Measured Total Depth				True Vertical Depth		BHL From Lease, Unit, or Property Line:					

LATERAL #3

SEC	TWP	RGE	COUNTY								
Spot Location				1/4	1/4	1/4	1/4	Feet From 1/4 Sec Lines	FSL	FWL	
Depth of Deviation				Radius of Turn		Direction		Total Length			
Measured Total Depth				True Vertical Depth		BHL From Lease, Unit, or Property Line:					

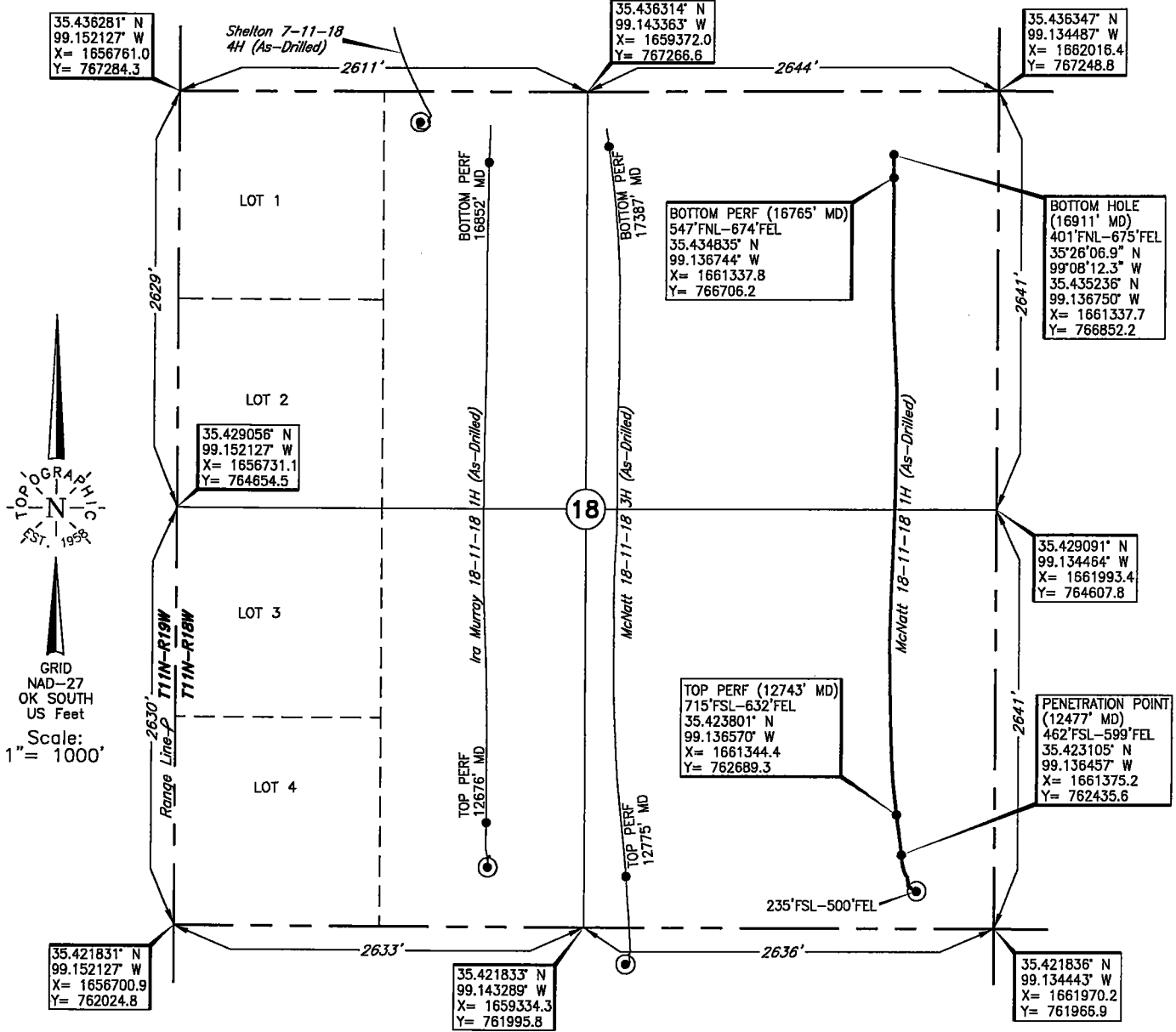
TOPOGRAPHIC LAND SURVEYORS OF OKLAHOMA

6709 NORTH CLASSEN BLVD., OKLA. CITY, OKLA. 73116 * LOCAL (405) 843-4847 * OUT OF STATE (800) 654-3219
 Certificate of Authorization No. 1293.

WASHITA

County, Oklahoma

235'FSL-500'FEL Section 18 Township 11N Range 18W I.M.



Operator: CHESAPEAKE OPERATING, L.L.C.

Lease Name: MCNATT 18-11-18

Well No.: 1H

ELEVATION:

1785' Gr. at Level Pad

Topography & Vegetation Loc. fell on level pad

Good Drill Site? Yes

Reference Stakes or Alternate Location
 Stakes Set None

Best Accessibility to Location From South off county road

Distance & Direction

from Hwy Jct or Town From Jct. of I-40 & St. Hwy. 44, go ±1.5 miles South, then ±2 miles East to
the SE Cor. of Sec. 18-T11N-R18W

DATUM: NAD-27
 LAT: 35°25'20.9"N
 LONG: 99°08'10.0"W
 LAT: 35.422481° N
 LONG: 99.136123° W
 STATE PLANE
 COORDINATES: (US Feet)
 ZONE: OK SOUTH
 X: 1661472.2
 Y: 762207.4

234123 Date of Drawing: Nov. 06, 2014
 Invoice # 227019 Date Staked: Jul. 17, 2014 JP

FINAL AS-DRILLED PLAT

AS-DRILLED INFORMATION
 FURNISHED BY CHESAPEAKE OPERATING, L.L.C.

This information was gathered with a GPS receiver with ±1 foot Horiz./Vert. accuracy.