

Oklahoma Corporation Commission  
 Oil & Gas Conservation Division  
 Post Office Box 52000  
 Oklahoma City, Oklahoma 73152-2000  
 Rule 165: 10-3-25

Form 1002A

API No.: 35087220040000

**Completion Report**

Spud Date: October 03, 2014

OTC Prod. Unit No.: 087-214711

Drilling Finished Date: October 31, 2014

1st Prod Date: November 22, 2014

Completion Date: November 20, 2014

**Drill Type: STRAIGHT HOLE**

Min Gas Allowable: Yes

Well Name: SLIVER 1-35

Purchaser/Measurer: ONEOK

Location: MCCLAIN 35 5N 4W  
 SE SE SE NE  
 220 FSL 220 FEL of 1/4 SEC  
 Latitude: 34.86294208 Longitude: 97.5829666  
 Derrick Elevation: 987 Ground Elevation: 964

First Sales Date: 11/22/2014

Operator: RUFFEL LANCE OIL & GAS LLC 15459

210 PARK AVE STE 2150  
 OKLAHOMA CITY, OK 73102-5632

Completion Type	
X	Single Zone
	Multiple Zone
	Commingled

Location Exception
Order No
627214

Increased Density
Order No
There are no Increased Density records to display.

Casing and Cement							
Type	Size	Weight	Grade	Feet	PSI	SAX	Top of CMT
CONDUCTOR	16	42		56		7	SURFACE
SURFACE	9 5/8	36		462		220	SURFACE
PRODUCTION	5 1/2	20	P-110	10935		745	7650

Liner								
Type	Size	Weight	Grade	Length	PSI	SAX	Top Depth	Bottom Depth
There are no Liner records to display.								

**Total Depth: 10935**

Packer	
Depth	Brand & Type
There are no Packer records to display.	

Plug	
Depth	Plug Type
10730	CIBP

Initial Test Data

Test Date	Formation	Oil BBL/Day	Oil-Gravity (API)	Gas MCF/Day	Gas-Oil Ratio Cu FT/BBL	Water BBL/Day	Pumpin or Flowing	Initial Shut-In Pressure	Choke Size	Flow Tubing Pressure
Nov 16, 2014	MCLISH					55	SWAB			
Nov 22, 2014	2ND BROMIDE	20	45	154	7700	120	FLOWING		26/64	360

**Completion and Test Data by Producing Formation**

Formation Name: MCLISH

Code: 202MCLS

Class: DRY

**Spacing Orders**

Order No	Unit Size
168277	80

**Perforated Intervals**

From	To
10850	10870

**Acid Volumes**

36 BARRELS
------------

**Fracture Treatments**

There are no Fracture Treatments records to display.
--

Formation Name: 2ND BROMIDE

Code: 202BRMD2

Class: OIL

**Spacing Orders**

Order No	Unit Size
168277	80

**Perforated Intervals**

From	To
10326	10354

**Acid Volumes**

36 BARRELS
------------

**Fracture Treatments**

There are no Fracture Treatments records to display.
--

Formation	Top
HART LIME	7802
SAND AND SHALE	7808
SPRINGER SHALE	8005
SAND AND SHALE	8005
WOODFORD	8680
HUNTON	8898
SYLVAN	9263
VIOLA	9432
SIMPSON (BROMIDE 1)	10116
SIMPSON (BROMIDE 2)	10323
SIMPSON (BROMIDE 3)	10452

Were open hole logs run? Yes

Date last log run: October 31, 2014

Were unusual drilling circumstances encountered? No

Explanation:

**Other Remarks**

TOP OF CEMENT BELOW DV TOOL @ 8,585', DV TOOL @ 8,174', TOP OF CEMENT DV TOOL @ 7,650'

**FOR COMMISSION USE ONLY**

1127285

Status: Accepted



RECEIVED

Form 1002A Rev. 2009

DEC 05 2014

OKLAHOMA CORPORATION COMMISSION

API NO. 087 22004  
OTC PROD. UNIT NO. 087 214711

PLEASE TYPE OR USE BLACK INK ONLY  
NOTE: Attach copy of original 1002A if recomple

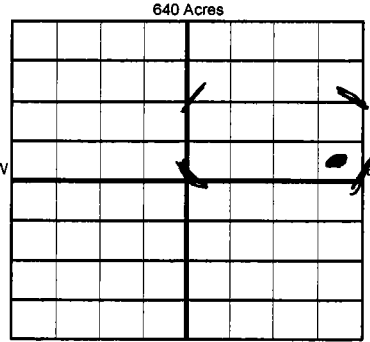
ORIGINAL  
 AMENDED (Reason)

Rule 165:10-3-25

COMPLETION REPORT

TYPE OF DRILLING OPERATION  
 STRAIGHT HOLE  DIRECTIONAL HOLE  HORIZONTAL HOLE  
 SERVICE WELL

SPUD DATE 10/3/2014  
DRLG FINISHED DATE 10/31/2014  
DATE OF WELL COMPLETION 11/20/2014  
1st PROD DATE 11/22/2014  
RECOMP DATE  
Longitude (if known) 97.5829666



McClain SEC 35 TWP 5N RGE 4W  
Sliver  
SE 1/4 SE 1/4 SE 1/4 NE 1/4 FSL 220  
ELEVATIO N Derrick 987 Ground 964  
Latitude (if known) 34.86294208  
Longitude (if known) 97.5829666  
LANCE RUFFEL OIL & GAS LLC  
210 PARK AVENUE, SUITE 2150  
OKLAHOMA CITY OK 73102

COMPLETION TYPE  
 SINGLE ZONE  
 MULTIPLE ZONE  
LOCATION EXCEPTION ORDER INCREASED DENSITY ORDER NO. 627214

CASING & CEMENT (Form 1002C must be attached)

TYPE	SIZE	WEIGHT	GRADE	FEET	PSI	SAX	TOP OF CMT
CONDUCTOR	16"	42#		56'			
SURFACE	9 5/8	36#		470'		220	Surface
INTERMEDIATE							
PRODUCTION	5 1/2	20#	P-110	10,935		745	7650
LINER							
TOTAL DEPTH							10,935

\* see Back comment

PACKER @ BRAND & TYPE PLUG @ 10730 TYPE CIBP PLUG @ TYPE  
PACKER @ BRAND & TYPE PLUG @ TYPE PLUG @ TYPE

COMPLETION & TEST DATA BY PRODUCING FORMATION

FORMATION	SPACING & SPACING ORDER NUMBER	CLASS: Oil, Gas, Dry, Inj, Disp, Comm Disp, Svc	PERFORATED INTERVALS	ACID/VOLUME	FRACTURE TREATMENT (Fluids/Prop Amounts)
Simpson (McClish) / 202MCLS	80 Acres 168277	DRY	4 SPF	36 BBLS	None
Simpson (2nd Bromide) / 202BRMD2	80 Acres 168277	OIL		36 BBLS	None

Min Gas Allowable (165:10-17-7) OR Oil Allowable (165:10-13-3) Gas Purchaser/Measurer First Sales Date ONEOK 11/22/2014

INITIAL TEST DATA

INITIAL TEST DATE	11/16/2014	11/22/2014
OIL-BBL/DAY		20
OIL-GRAVITY ( API)		45
GAS-MCF/DAY		154
GAS-OIL RATIO CU FT/BBL		7,700
WATER-BBL/DAY	55 BBLS SWAB	120
PUMPING OR FLOWING		Flow
INITIAL SHUT-IN PRESSURE		0
CHOKE SIZE		26/64
FLOW TUBING PRESSURE		360#

A record of the formations drilled through, and pertinent remarks are presented on the reverse. I declare that I have knowledge of the contents of this report and am authorized by my organization to make this report, which was prepared by me or under my supervision and direction, with the data and facts stated herein to be true, correct, and complete to the best of my knowledge and belief.

SIGNATURE: [Signature] LANCE RUFFEL  
210 PARK AVENUE, SUITE 2150 OKLAHOMA CITY OK 73102  
DATE: 12.2.14 PHONE NUMBER: 405/239-7036

PLEASE TYPE OR USE BLACK INK ONLY  
FORMATION RECORD

Give formation names and tops, if available, or descriptions and thickness of formations drilled through. Show intervals cored or drillstem tested.

NAMES OF FORMATIONS	TOP
Hart Lime	7,802
Sand & Shale	7,808
Springer Shale	8005
Sand & Shale	8,005
Woodford	8,680
Hunton	8,898
Sylvan	9,263
Viola	9,432
Simpson (Bromide 1)	10,116
Simpson (Bromide 2)	10,323
Simpson (Bromide 3)	10,452
TD	10,935

LEASE NAME \_\_\_\_\_ WELL NO. \_\_\_\_\_

FOR COMMISSION USE ONLY

ITD on file  YES  NO

APPROVED \_\_\_\_\_ DISAPPROVED \_\_\_\_\_ 2) Reject Codes \_\_\_\_\_

\_\_\_\_\_

\_\_\_\_\_

\_\_\_\_\_

\_\_\_\_\_

Were open hole logs run?  yes  no

Date Last log was run \_\_\_\_\_ 10/31/2014 \_\_\_\_\_

Was CO<sub>2</sub> encountered?  yes  no at what depths? \_\_\_\_\_

Was H<sub>2</sub>S encountered?  yes  no at what depths? \_\_\_\_\_

Were unusual drilling circumstances encountered?  yes  no  
If yes, briefly explain below \_\_\_\_\_

Other remarks: Top of Cement Below DV tool @8585, DV toll @8174, Top of Cement DV tool @7650

\_\_\_\_\_

\_\_\_\_\_

\_\_\_\_\_

\_\_\_\_\_

640 Acres


If more than three drainholes are proposed, attach a separate sheet indicating the necessary information.

Direction must be stated in degrees azimuth. Please note, the horizontal drainhole and its end point must be located within the boundaries of the lease or spacing unit.

Directional surveys are required for all drainholes and directional wells.

640 Acres


**BOTTOM HOLE LOCATION FOR DIRECTIONAL HOLE**

SEC	TWP	RGE	COUNTY				
Spot Location	1/4	1/4	1/4	1/4	Feet From 1/4 Sec Lines	FSL	FWL
Measured Total Depth	True Vertical Depth		BHL From Lease, Unit, or Property Line:				

**BOTTOM HOLE LOCATION FOR HORIZONTAL HOLE: (LATERALS)**

**LATERAL #1**

SEC	TWP	RGE	COUNTY	Seminole			
Spot Location	1/4	1/4	1/4	1/4	Feet From 1/4 Sec Lines	FSL	FWL
Depth of Deviation	Radius of Turn		Direction		Total Length		
Measured Total Depth	True Vertical Depth		BHL From Lease, Unit, or Property Line:				

**LATERAL #2**

SEC	TWP	RGE	COUNTY				
Spot Location	1/4	1/4	1/4	1/4	Feet From 1/4 Sec Lines	FSL	FWL
Depth of Deviation	Radius of Turn		Direction		Total Length		
Measured Total Depth	True Vertical Depth		BHL From Lease, Unit, or Property Line:				

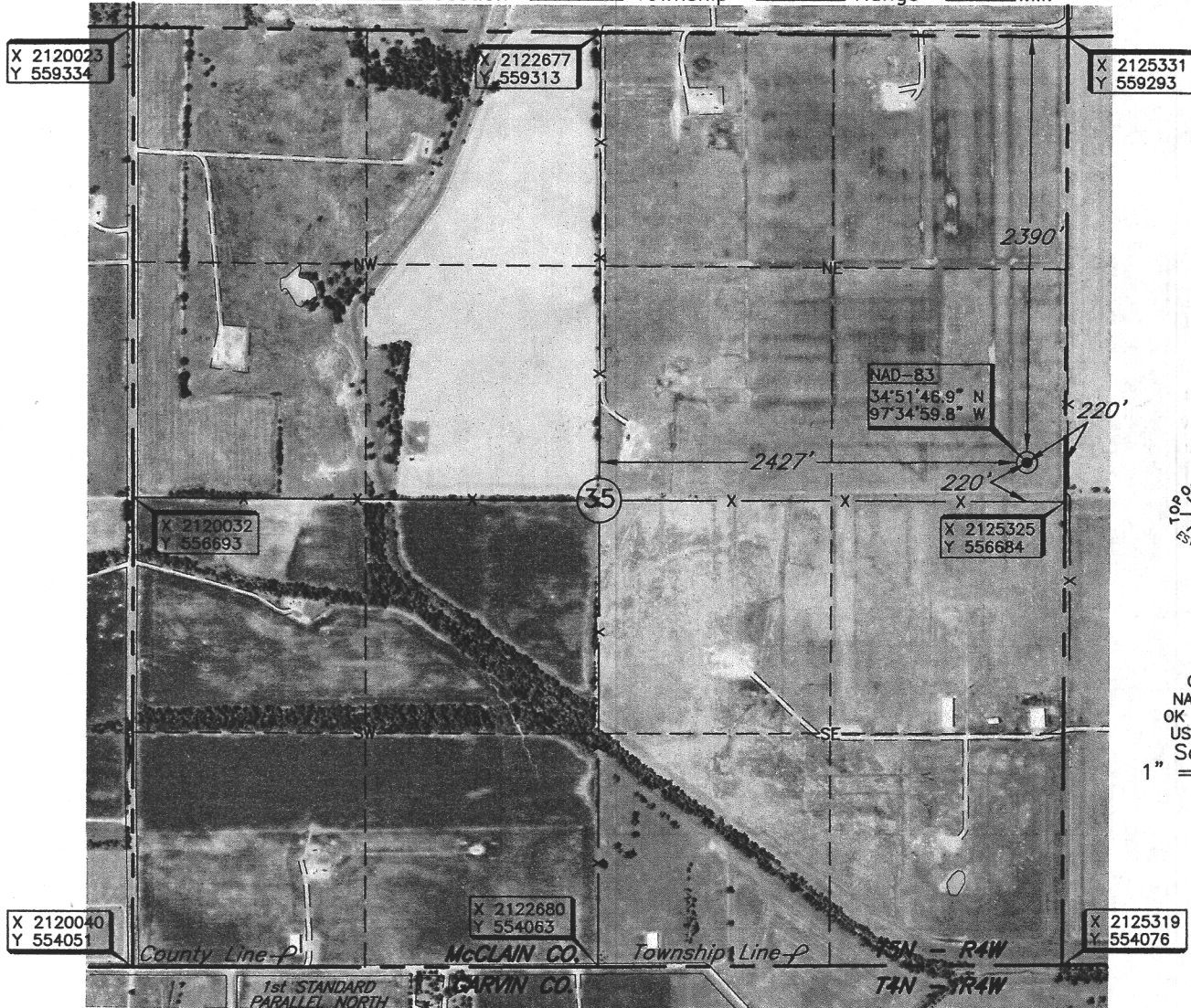
**LATERAL #3**

SEC	TWP	RGE	COUNTY				
Spot Location	1/4	1/4	1/4	1/4	Feet From 1/4 Sec Lines	FSL	FWL
Depth of Deviation	Radius of Turn		Direction		Total Length		
Measured Total Depth	True Vertical Depth		BHL From Lease, Unit, or Property Line:				

MCCLAIN

County, Oklahoma

220' FSL-220' FEL-NE/4 Section 35 Township 5N Range 4W I.M.



THE INFORMATION SHOWN HEREIN IS FOR CONSTRUCTION PURPOSES ONLY

**ELEVATION:**  
 965' Gr. at Stake (NAVD 88)  
 964' Gr. at Stake (NGVD 29)

Operator: LANCE RUFFEL OIL & GAS CORP.

Lease Name: SILVER

Well No.: 1-35

Topography & Vegetation Loc. fell in pasture, ± 165' N. of E-W fence

Good Drill Site? Yes Reference Stakes or Alternate Location Stakes Set None

Best Accessibility to Location From South off lease road

Distance & Direction From the junction of St. Hwy 76 & St. Hwy 24, go ± 6 miles South on St. Hwy 76, then go ± 2.8 miles East to lease road, follow lease road South for ± 1 mile to the NE Corner of Section 35, T5N-R4W.

DATUM: NAD-27  
 LAT: 34°51'46.6\"/>

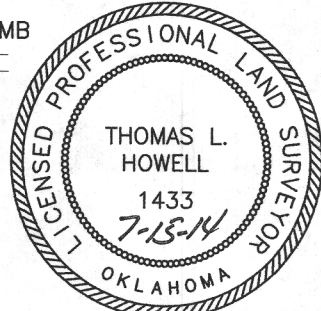
Date of Drawing: July 14, 2014  
 Invoice # 226968 Date Staked: July 10, 2014

NMB

**CERTIFICATE:**

I, Thomas L. Howell a Licensed Land Surveyor and an authorized agent of Topographic Land Surveyors, do hereby certify to the information shown herein.

*Thomas L. Howell*  
 Oklahoma Reg. No. 1433



This information was gathered with a GPS receiver with ±1 foot Horiz./Vert. accuracy.