

Oklahoma Corporation Commission  
 Oil & Gas Conservation Division  
 Post Office Box 52000  
 Oklahoma City, Oklahoma 73152-2000  
 Rule 165: 10-3-25

Form 1002A

API No.: 35085212210001

**Completion Report**

Spud Date: June 03, 2014

OTC Prod. Unit No.: 085-21485

Drilling Finished Date: September 15, 2014

1st Prod Date: November 17, 2014

Completion Date: November 05, 2014

**Drill Type: HORIZONTAL HOLE**

Well Name: THOMPSON 1-21H28X

Purchaser/Measurer:

Location: LOVE 21 7S 1E  
 NW SW SW NE  
 2180 FNL 2445 FEL of 1/4 SEC  
 Derrick Elevation: 0 Ground Elevation: 843

First Sales Date:

Operator: XTO ENERGY INC 21003

810 HOUSTON ST  
 FORT WORTH, TX 76102-6203

Completion Type	
X	Single Zone
	Multiple Zone
	Commingled

Location Exception	
Order No	
	624931
	624932

Increased Density	
Order No	
There are no Increased Density records to display.	

Casing and Cement							
Type	Size	Weight	Grade	Feet	PSI	SAX	Top of CMT
CONDUCTOR	16	118	J-55	103		21	SURFACE
SURFACE	9 5/8	36	J-55	2022		510	SURFACE
PRODUCTION	5 1/2	23	P-110	22327		2380	10050

Liner								
Type	Size	Weight	Grade	Length	PSI	SAX	Top Depth	Bottom Depth
There are no Liner records to display.								

**Total Depth: 22340**

Packer	
Depth	Brand & Type
There are no Packer records to display.	

Plug	
Depth	Plug Type
There are no Plug records to display.	

Initial Test Data										
Test Date	Formation	Oil BBL/Day	Oil-Gravity (API)	Gas MCF/Day	Gas-Oil Ratio Cu FT/BBL	Water BBL/Day	Pumpin or Flowing	Initial Shut-In Pressure	Choke Size	Flow Tubing Pressure
Nov 08, 2014	WOODFORD	545	45	738	1354	1384	FLOWING	3200	23/64	1900

Completion and Test Data by Producing Formation										
Formation Name: WOODFORD			Code: 319WDFD			Class: OIL				
<b>Spacing Orders</b>				<b>Perforated Intervals</b>						
<b>Order No</b>	<b>Unit Size</b>			<b>From</b>			<b>To</b>			
623515	640			15269			22034			
623634	MULTIUNIT									
623686	640									
<b>Acid Volumes</b>				<b>Fracture Treatments</b>						
12,000 GALLONS				21 STAGES - 184,854 BTW, 670,060 POUNDS 100 MESH, 7,324,260 POUNDS 40/70						

Formation	Top
WOODFORD	15247

Were open hole logs run? No  
Date last log run:

Were unusual drilling circumstances encountered? No  
Explanation:

Other Remarks
OCC: FLE ORDERS HAVE NOT BEEN ISSUED. WE HAVE ACCEPTED OPERATORS DATA AS SUBMITTED. IRREGULAR SECTION.

Lateral Holes
Sec: 28 TWP: 7S RGE: 1E County: LOVE SW SE SW NE 53 FSL 1660 FEL of 1/4 SEC Depth of Deviation: 12025 Radius of Turn: 3076 Direction: 174 Total Length: 7855 Measured Total Depth: 22340 True Vertical Depth: 14918 End Pt. Location From Release, Unit or Property Line: 53

FOR COMMISSION USE ONLY
Status: Accepted
1127288

API NO. 085-21221  
 OTC PROD. UNIT NO. 085-21485

PLEASE TYPE OR USE BLACK INK  
 NOTE:

Attach copy of original 101  
 if recompletion or reentry

**AS SUBMITTED**

RECEIVED

DEC 05 2014

Form 1002A  
 Rev. 2009

OKLAHOMA CORPORATION  
 COMMISSION

ORIGINAL  
 AMENDED (Reason)

Rule 165:10-3-25

COMPLETION REPORT

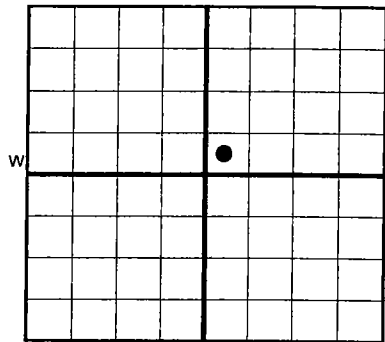
TYPE OF DRILLING OPERATION

STRAIGHT HOLE  DIRECTIONAL HOLE  HORIZONTAL HOLE  
 SERVICE WELL

If directional or horizontal, see reverse for bottom hole location.

COUNTY	Love	SEC	21	TWP	7S	RGE	1E	SPUD DATE	6/3/2014
LEASE NAME	Thompson 1-21H28X			WELL NO.	2180'			DRLG FINISHED DATE	9/15/2014
ELEVATION	Ground	843'	Latitude (if known)	33.934352°N			Longitude (if known)	97.203630°W	
OPERATOR NAME	XTO Energy Inc.			OTC/OCC OPERATOR NO.	21003				
ADDRESS	210 Park Avenue, Suite 2350								
CITY	Oklahoma City	STATE	Oklahoma	ZIP	73102				

640 Acres



COMPLETION TYPE

<input checked="" type="checkbox"/>	SINGLE ZONE
<input type="checkbox"/>	MULTIPLE ZONE
<input type="checkbox"/>	COMINGLED
<input type="checkbox"/>	LOCATION EXCEPTION
<input type="checkbox"/>	INCREASED DENSITY

Application Date: 624931, 624932

CASING & CEMENT (Form 1002C must be attached)

TYPE	SIZE	WEIGHT	GRADE	FEET	PSI	SAX	TOP OF CMT	
CONDUCTOR	16"	118	J-55	103			Surface	
SURFACE	9 5/8"	36	J-55	2022		510	Surface	
INTERMEDIATE								
PRODUCTION	5 1/2"	23	P-110	22,327		2380	10,050'	
LINER								
							TOTAL DEPTH	22,340'

PACKER @ \_\_\_\_\_ BRAND & TYPE \_\_\_\_\_ PLUG @ \_\_\_\_\_ TYPE \_\_\_\_\_ PLUG @ \_\_\_\_\_ TYPE \_\_\_\_\_  
 PACKER @ \_\_\_\_\_ BRAND & TYPE \_\_\_\_\_ PLUG @ \_\_\_\_\_ TYPE \_\_\_\_\_ PLUG @ \_\_\_\_\_ TYPE \_\_\_\_\_

COMPLETION & TEST DATA BY PRODUCING FORMATION

FORMATION	WOODFORD				
SPACING & SPACING ORDER NUMBER	640: 623686, 623515	623634			Reported to Frac Fracs
CLASS: Oil, Gas, Dry, Inj, Disp, Comm Disp, Svc	Oil				
PERFORATED INTERVALS	21 Stages				
	15269-22034				
ACID/VOLUME	12,000 gals				
FRACTURE TREATMENT (Fluids/Prop Amounts)	184,854 BTW				
	670,060# 100 Mesh				
	7,324,260# 40/70				

Min Gas Allowable (165:10-17-7)

Gas Purchaser/Measurer

OR

First Sales Date

INITIAL TEST DATA

Oil Allowable (165:10-13-3)

INITIAL TEST DATE	11/8/2014			
OIL-BBL/DAY	545			
OIL-GRAVITY ( API)	45			
GAS-MCF/DAY	738			
GAS-OIL RATIO CU FT/BBL	1354			
WATER-BBL/DAY	1384			
PUMPING OR FLOWING	Flowing			
INITIAL SHUT-IN PRESSURE	3200			
CHOKE SIZE	23/64"			
FLOW TUBING PRESSURE	1900 FCP			

A record of the formations drilled through, and pertinent remarks are presented on the reverse. I declare that I have knowledge of the contents of this report and am authorized by my organization to make this report, which was prepared by me or under my supervision and direction, with the data and facts stated herein to be true, correct, and complete to the best of my knowledge and belief.

<i>Debbie Waggoner</i>	Debbie Waggoner	12/2/2014	405-319-3243
SIGNATURE	NAME (PRINT OR TYPE)	DATE	PHONE NUMBER
210 Park Avenue, Suite 2350	Oklahoma City Ok 73102	debbie_waggoner@xtoenergy.com	
ADDRESS	CITY STATE ZIP	EMAIL ADDRESS	

PLEASE TYPE OR USE BLACK INK ONLY  
FORMATION RECORD

Give formation names and tops, if available, or descriptions and thickness of formations drilled through. Show intervals cored or drillstem tested.

LEASE NAME THOMPSON WELL NO. 1-21H28X

NAMES OF FORMATIONS	TOP
WOODFORD	15,247'

FOR COMMISSION USE ONLY

ITD on file  YES  NO

APPROVED \_\_\_\_\_ DISAPPROVED \_\_\_\_\_

2) Reject Codes

\_\_\_\_\_

\_\_\_\_\_

\_\_\_\_\_

\_\_\_\_\_

Were open hole logs run?  yes  no

Date Last log was run \_\_\_\_\_

Was CO<sub>2</sub> encountered?  yes  no at what depths? \_\_\_\_\_

Was H<sub>2</sub>S encountered?  yes  no at what depths? \_\_\_\_\_

Were unusual drilling circumstances encountered?  yes  no

If yes, briefly explain below:

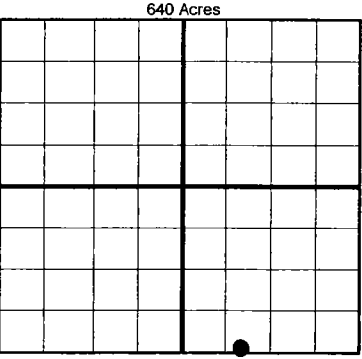
Other remarks: Irregular Section

\_\_\_\_\_

\_\_\_\_\_

\_\_\_\_\_

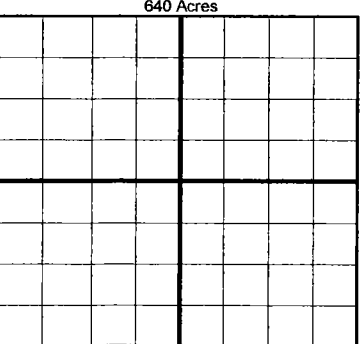
\_\_\_\_\_



If more than three drainholes are proposed, attach a separate sheet indicating the necessary information.

Direction must be stated in degrees azimuth. Please note, the horizontal drainhole and its end point must be located within the boundaries of the lease or spacing unit.

Directional surveys are required for all drainholes and directional wells.



BOTTOM HOLE LOCATION FOR DIRECTIONAL HOLE

SEC	TWP	RGE	COUNTY			
Spot Location	1/4	1/4	1/4	Feet From 1/4 Sec Lines	FSL	FWL
Measured Total Depth	True Vertical Depth		BHL From Lease, Unit, or Property Line:			

BOTTOM HOLE LOCATION FOR HORIZONTAL HOLE: (LATERALS)

LATERAL #1

SEC	TWP	RGE	COUNTY						
28	7S	1E	Love						
Spot Location	NW 1/4	SW 1/4	SW 1/4	NE 1/4	Feet From 1/4 Sec Lines	FSL	53	FEL	1660
Depth of Deviation	12,025		Radius of Turn		3076.1		Direction	174.3°	
Measured Total Depth	22,340		True Vertical Depth		14,918		BHL From Lease, Unit, or Property Line: 53' FSL & 1660 FEL		

LATERAL #2

SEC	TWP	RGE	COUNTY				
Spot Location	1/4	1/4	1/4	1/4	Feet From 1/4 Sec Lines	FSL	FWL
Depth of Deviation	Radius of Turn		Direction		Total Length		
Measured Total Depth	True Vertical Depth		BHL From Lease, Unit, or Property Line:				

LATERAL #3

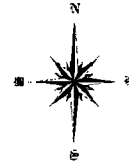
SEC	TWP	RGE	COUNTY				
Spot Location	1/4	1/4	1/4	1/4	Feet From 1/4 Sec Lines	FSL	FWL
Depth of Deviation	Radius of Turn		Direction		Total Length		
Measured Total Depth	True Vertical Depth		BHL From Lease, Unit, or Property Line:				

HT 1 085 21221 A

**THOMPSON 1-21H28X**

SECTION 21  
TOWNSHIP 7 SOUTH, RANGE 1 EAST  
LOVE COUNTY, OKLAHOMA

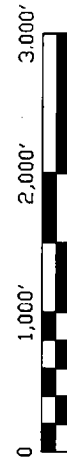
OPERATOR:



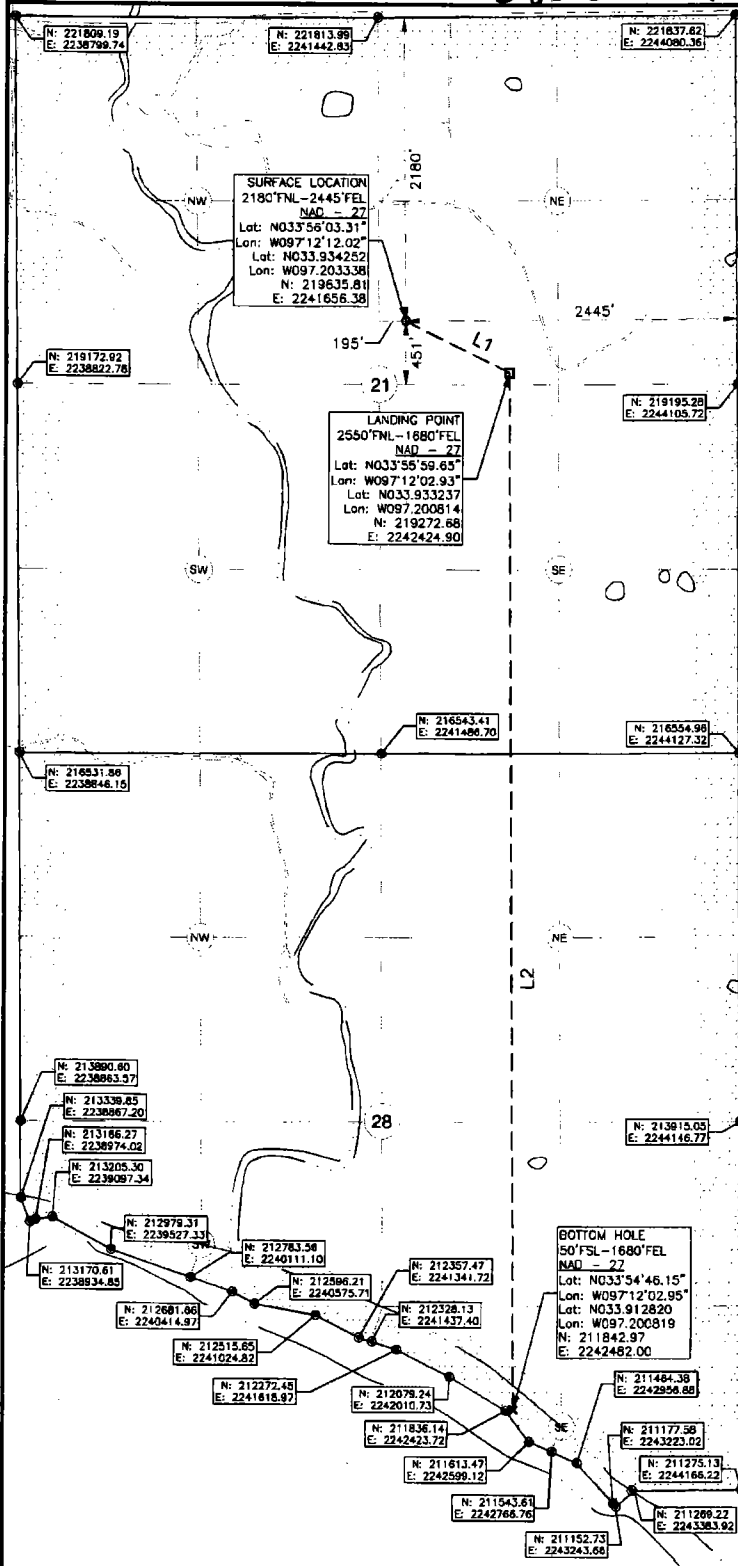
**LEGEND:**

- EXISTING WELL HEAD/PRODUCTION WELL
- PROPOSED SURFACE HOLE (PSHL)
- SECTION CORNER
- PROPOSED LANDING POINT (LP)
- PROPOSED BOTTOM HOLE (PBHL)
- DRILLING UNIT

Line Table		
Line #	Azimuth	Length
L1	115.290760	849.99
L2	179.559719	7429.94



**NOTES:**  
1. This survey does not represent a boundary survey. It is for Geographical Information Systems (GIS) purposes only as instructed by the client and is not to be relied upon for the establishment of fences, buildings or other further improvement. Positions were taken with Survey Grade RTK GPS and NGS CORS stations using the NAD83 Oklahoma South State Plane Coordinate System.  
2. Bottom hole information provided by operator listed, not surveyed and corner coordinates are taken from points surveyed in field.



**Surface Hole Location:** 2180' From North Line Section 21  
2445' From East Line Section 21  
  
Latitude: N33.934252° (NAD 27)  
Longitude: W97.203338° (NAD 27)  
Latitude: N33.934352° (NAD 83)  
Longitude: W97.203630° (NAD 83)  
  
Ground Elev: 843.4

**Landing Point Location:** 2550' From North Line Section 21  
1680' From East Line Section 21

**Bottom Hole Location:** 50' From South Line Section 28  
1680' From East Line Section 28

**Drilling Unit:** Section 21&28, T7S, R1E

Operator: XTO Energy, Inc.  
Location: From West  
  
Distance & Direction from Hwy Jct or Town:  
From the Intersection of Hwy 32 and Interstate 35 go West 5.0mi on Hwy 32 to Existing Access, then 0.6mi South to New Access Rd. Well Location to the East.

I, Chad Fox, a duly registered Professional Land Surveyor in the State of OKLAHOMA, do hereby certify that the drawing shown hereon was completed and represents a good and accurate survey made upon the ground by me or under my direct supervision.

CHAD FOX P.L.S. NO. 1758  
C.O.A. NO. 6186 EX. DATE: 31JAN14



**CDF AND ASSOCIATES, LLC.**  
404 Coggins Ave. Poteau, OK 74953 (918) 721-1262  
Certificate of Authorization No. 6186

JOB NO: XTO/WP13/THOMPSON1-21H28X DRAWN BY: LD  
DATE: 10/MAR/14 REV: E SCALE: 1" = 1,000' SHT NO. 1