

Oklahoma Corporation Commission
Oil & Gas Conservation Division
Post Office Box 52000
Oklahoma City, Oklahoma 73152-2000
Rule 165: 10-3-25

Form 1002A

API No.: 35007256920000

Completion Report

Spud Date: August 11, 2014

OTC Prod. Unit No.:

Drilling Finished Date: August 24, 2014

1st Prod Date: September 13, 2014

Completion Date: September 11, 2014

Drill Type: HORIZONTAL HOLE

Well Name: KACHEL FAMILY 1-26H

Purchaser/Measurer:

Location: BEAVER 26 3N 23E CM
NE NE NW NW
200 FNL 1000 FWL of 1/4 SEC
Derrick Elevation: 2716 Ground Elevation: 2701

First Sales Date:

Operator: UNIT PETROLEUM COMPANY 16711
PO BOX 702500
7130 S LEWIS AVE STE 1000
TULSA, OK 74170-2500

Completion Type	
X	Single Zone
	Multiple Zone
	Commingled

Location Exception	
Order No	
	629130
	631039

Increased Density	
Order No	
There are no Increased Density records to display.	

Casing and Cement							
Type	Size	Weight	Grade	Feet	PSI	SAX	Top of CMT
SURFACE	9 5/8	36	J-55	1955		600	SURFACE
INTERMEDIATE	77	26	N-80	6483		335	4500

Liner								
Type	Size	Weight	Grade	Length	PSI	SAX	Top Depth	Bottom Depth
There are no Liner records to display.								

Total Depth: 11018

Packer	
Depth	Brand & Type
There are no Packer records to display.	

Plug	
Depth	Plug Type
There are no Plug records to display.	

Initial Test Data										
Test Date	Formation	Oil BBL/Day	Oil-Gravity (API)	Gas MCF/Day	Gas-Oil Ratio Cu FT/BBL	Water BBL/Day	Pumpin or Flowing	Initial Shut-In Pressure	Choke Size	Flow Tubing Pressure
Sep 12, 2014	MARMATON	20	41	75	3750	1035	PUMPING			

Completion and Test Data by Producing Formation										
Formation Name: MARMATON			Code: 404MRMN			Class: OIL				
Spacing Orders				Perforated Intervals						
Order No	Unit Size			From			To			
630317	640			There are no Perf. Intervals records to display.						
Acid Volumes				Fracture Treatments						
There are no Acid Volume records to display.				There are no Fracture Treatments records to display.						

Formation	Top
TORONTO	5054
LANSING	5304
CHECKERBOARD	5951
MARMATON	6440

Were open hole logs run? No

Date last log run:

Were unusual drilling circumstances encountered? No

Explanation:

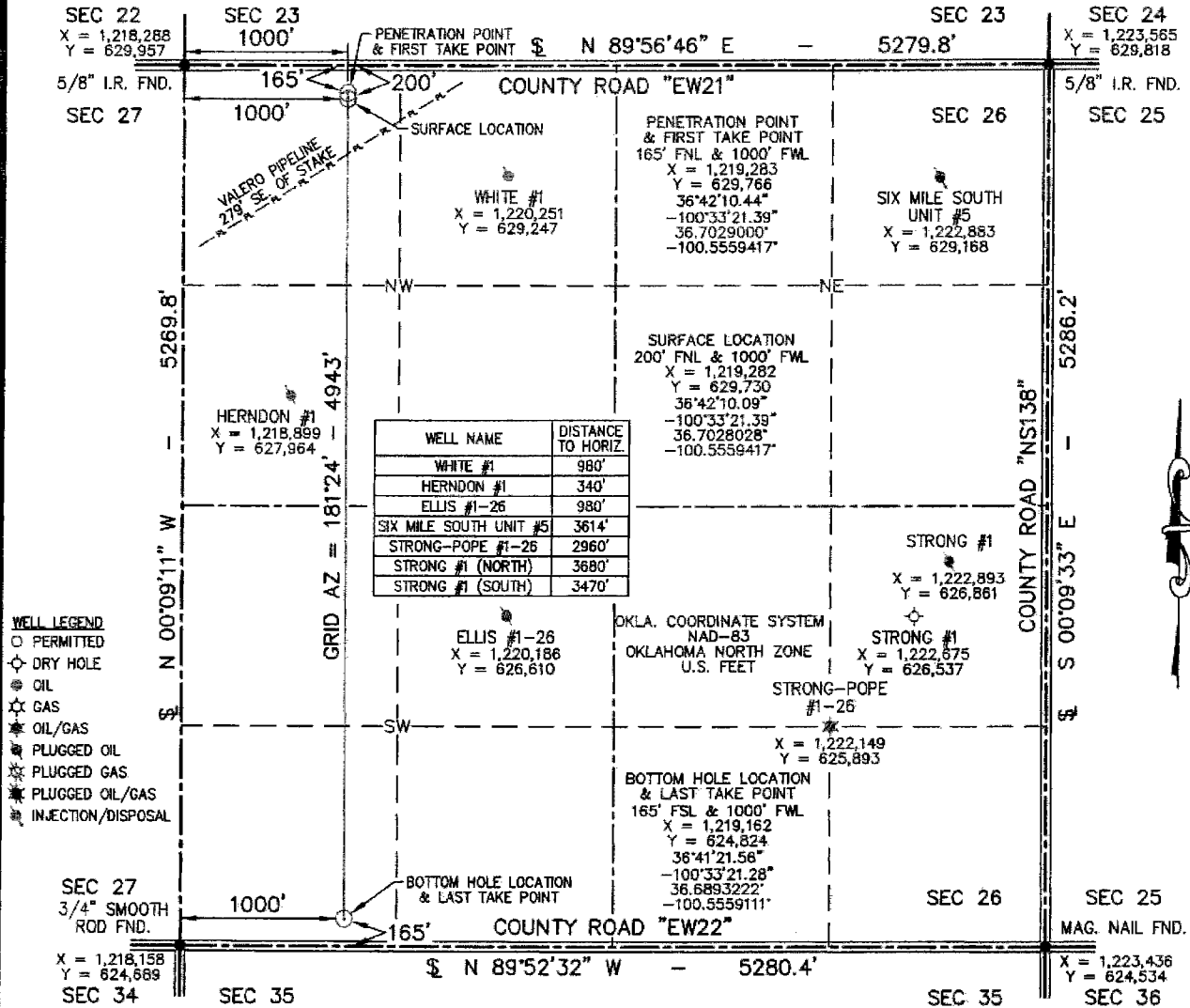
Other Remarks
OPEN HOLE FROM 6483' TO TOTAL DEPTH OF 11018' - NO FRAC, ISIP - VACUUM FORMATIONS: TORONTO - 5045 TVD; LANSING - 5295 TVD; CHECKERBOARD - 5928 TVD; MARMATON - 6230 TVD. IRREGULAR SECTION. OCC: FLE ORDR HAS NOT BEEN ISSUED. WE HAVE ACCEPTED OPERATORS DATA AS SUBMITTED.

Lateral Holes
Sec: 26 TWP: 3N RGE: 23E County: BEAVER Meridian: CM
SE SE SW SW
165 FSL 1000 FWL of 1/4 SEC
Depth of Deviation: 5585 Radius of Turn: 663 Direction: 177 Total Length: 4578
Measured Total Depth: 11018 True Vertical Depth: 6283 End Pt. Location From Release, Unit or Property Line: 165

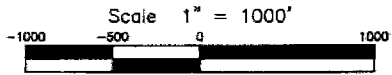
FOR COMMISSION USE ONLY
Status: Accepted
1126004

PROPOSED NEW WELL LOCATION PLAT

COMPANY UNIT PETROLEUM COMPANY LEASE KACHEL FAMILY WELL NO. 1-26H
 SECTION 26 TOWNSHIP 3-N RANGE 23-ECM LOCATION 200' FNL 1000' FWL
 COUNTY BEAVER STATE OKLAHOMA TOPOGRAPHY AND VEGETATION PASTURE
 LATITUDE 36°42'10.09" LONGITUDE -100°33'21.39" NAD83 ELEVATION 2701' NGVD29 DATE STAKED 7/2/14
 DIRECTION FROM NEAREST TOWN APPROXIMATELY 6.0 MILES NORTHWEST OF ELMWOOD, OKLAHOMA



- WELL LEGEND**
- PERMITTED
 - ⊕ DRY HOLE
 - OIL
 - ☆ GAS
 - ★ OIL/GAS
 - ⊗ PLUGGED OIL
 - ⊗ PLUGGED GAS
 - ⊗ PLUGGED OIL/GAS
 - ⊗ INJECTION/DISPOSAL



- NOTE:**
1. This plat is intended for Oklahoma Corporation Commission Permit purposes only and is NOT to be relied upon as a boundary survey and is NOT to be used to convey or establish real property interests.
 2. Bearings and dimensions shown are based on Geodetic Azimuth and Ground distance. All X,Y coordinates are based on NAD83, Oklahoma North Zone, U.S. Feet.
 3. X,Y Coordinates were derived from GPS RTK methods and are only accurate within +/- 10 feet.

THIS IS TO CERTIFY THAT THE ABOVE PLAT WAS PREPARED FROM FIELD NOTES OF ACTUAL SURVEYS MADE BY MYSELF OR OTHERS UNDER MY SUPERVISION AND THAT THE SAME ARE TRUE AND CORRECT TO THE BEST OF MY KNOWLEDGE AND BELIEF.

SIGNED: _____ DATED: 7/3/14



APEX
SURVEYING & MAPPING, INC.
TEXAS * OKLAHOMA * KANSAS

8330 CANYON DRIVE
AMARILLO, TEXAS 79119
806-353-7231

105 HACKBERRY TRAIL
CANADIAN, TEXAS 78014
806-323-9773

Certificate of Authorization No. 3415, Exp. June 30, 2016

UNIT PETROLEUM COMPANY
A Subsidiary of Unit Corporation
P.O. Box 186
Booker, TX 79005

FIELD:	KB,GPS
DRAWN:	SDT
DATE:	7/3/14
CHECKED:	MLS
REVISION:	

JOB NO. 214-627-1