

Oklahoma Corporation Commission
 Oil & Gas Conservation Division
 Post Office Box 52000
 Oklahoma City, Oklahoma 73152-2000
 Rule 165: 10-3-25

Form 1002A

API No.: 35007256950000

Completion Report

Spud Date: August 26, 2014

OTC Prod. Unit No.:

Drilling Finished Date: September 04, 2014

1st Prod Date: September 18, 2014

Completion Date: September 16, 2014

Drill Type: HORIZONTAL HOLE

Well Name: EDWARDS 1-18H

Purchaser/Measurer:

Location: BEAVER 18 2N 20E CM
 SE SW SE SE
 236 FSL 750 FEL of 1/4 SEC
 Derrick Elevation: 2712 Ground Elevation: 2696

First Sales Date:

Operator: UNIT PETROLEUM COMPANY 16711
 PO BOX 702500
 7130 S LEWIS AVE STE 1000
 TULSA, OK 74170-2500

| Completion Type | |
|-----------------|---------------|
| X | Single Zone |
| | Multiple Zone |
| | Commingled |

| Location Exception |
|--------------------|
| Order No |
| 629126 |

| Increased Density |
|--|
| Order No |
| There are no Increased Density records to display. |

| Casing and Cement | | | | | | | |
|-------------------|-------|--------|-------|------|-----|-----|------------|
| Type | Size | Weight | Grade | Feet | PSI | SAX | Top of CMT |
| SURFACE | 9 5/8 | 36 | J-55 | 1971 | | 605 | SURFACE |
| INTERMEDIATE | 7 | 26 | L-80 | 5923 | | 280 | 4500 |

| Liner | | | | | | | | |
|--|------|--------|-------|--------|-----|-----|-----------|--------------|
| Type | Size | Weight | Grade | Length | PSI | SAX | Top Depth | Bottom Depth |
| There are no Liner records to display. | | | | | | | | |

Total Depth: 10540

| Packer | |
|---|--------------|
| Depth | Brand & Type |
| There are no Packer records to display. | |

| Plug | |
|---------------------------------------|-----------|
| Depth | Plug Type |
| There are no Plug records to display. | |

| Initial Test Data | | | | | | | | | | |
|-------------------|-----------|-------------|-------------------|-------------|-------------------------|---------------|-------------------|--------------------------|------------|----------------------|
| Test Date | Formation | Oil BBL/Day | Oil-Gravity (API) | Gas MCF/Day | Gas-Oil Ratio Cu FT/BBL | Water BBL/Day | Pumpin or Flowing | Initial Shut-In Pressure | Choke Size | Flow Tubing Pressure |
| Sep 16, 2014 | MARMATON | 185 | 40 | 64 | 345 | 646 | PUMPING | | | |

| Completion and Test Data by Producing Formation | | | | | | | | | | |
|---|------------------|--|---------------|--|--|------------|-----------|--|--|--|
| Formation Name: MARMATON | | | Code: 404MRMN | | | Class: OIL | | | | |
| Spacing Orders | | | | Perforated Intervals | | | | | | |
| Order No | Unit Size | | | From | | | To | | | |
| 630479 | 640 | | | There are no Perf. Intervals records to display. | | | | | | |
| Acid Volumes | | | | Fracture Treatments | | | | | | |
| There are no Acid Volume records to display. | | | | There are no Fracture Treatments records to display. | | | | | | |

| Formation | Top |
|-----------------|------|
| TORONTO | 4658 |
| LANSING | 4734 |
| KC/CHECKERBOARD | 5492 |
| MARMATON | 5898 |

Were open hole logs run? No

Date last log run:

Were unusual drilling circumstances encountered? No

Explanation:

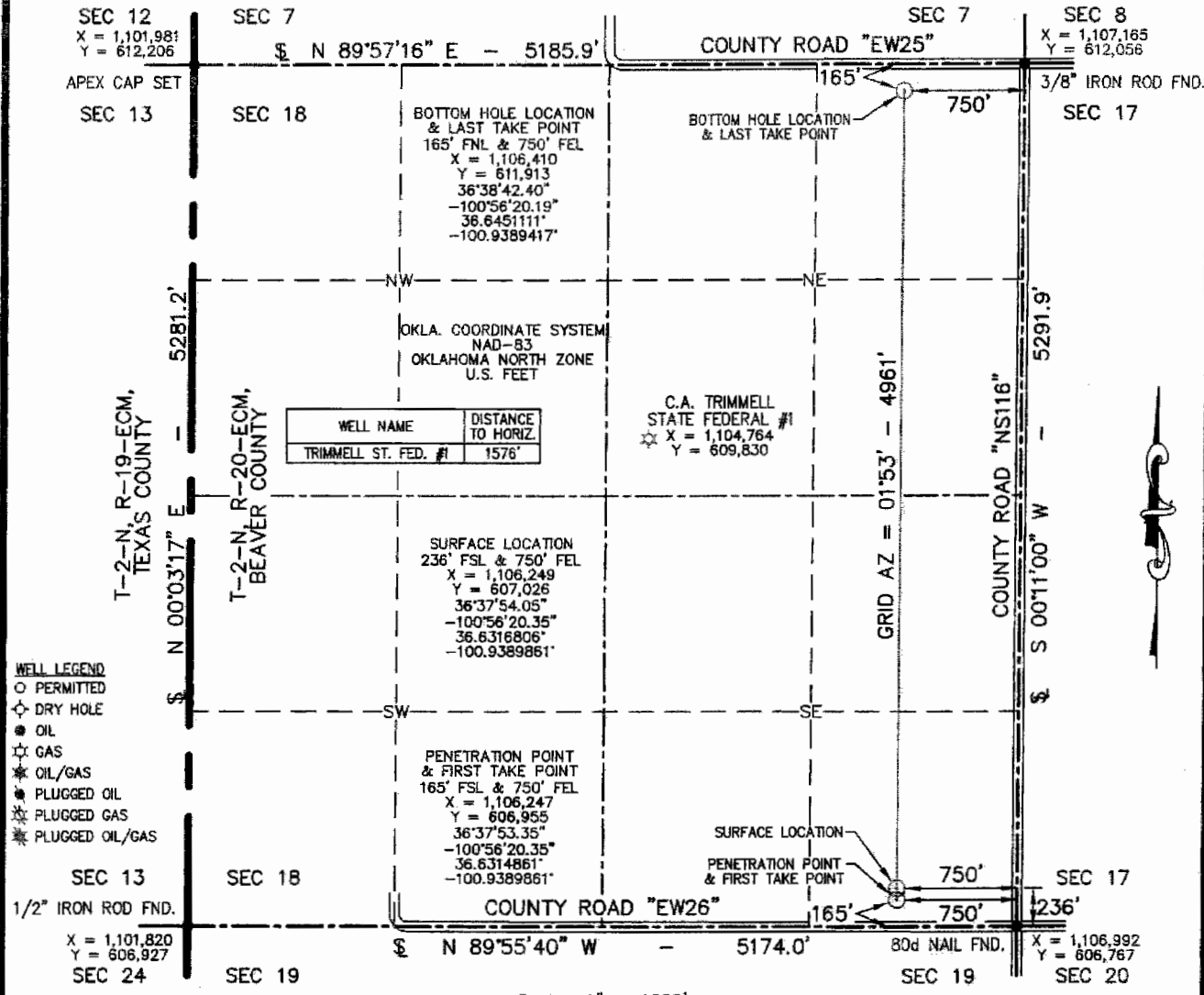
| Other Remarks |
|--|
| OPEN HOLE FROM 5923' TO TOTAL DEPTH OF 10540'. - NO FRAC, ISIP - VACUUM. FORMATIONS: TORONTO - 4647 TVD; LANSING - 4723 TVD; KC/CHECKERBOARD - 5455 TVD; MARMATON - 5712 TVD. IRREGULAR SECTION. OCC: FLE ORDER HAS NOT BEEN ISSUED. WE HAVE ACCEPTED OPERATORS DATA AS SUBMITTED. |

| Lateral Holes |
|--|
| Sec: 18 TWP: 2N RGE: 20E County: BEAVER Meridian: CM NE NW NE NE 165 FNL 750 FEL of 1/4 SEC Depth of Deviation: 5085 Radius of Turn: 690 Direction: 359 Total Length: 4642 Measured Total Depth: 10540 True Vertical Depth: 5756 End Pt. Location From Release, Unit or Property Line: 165 |

| FOR COMMISSION USE ONLY |
|-------------------------|
| Status: Accepted |
| 1126005 |

PROPOSED NEW WELL LOCATION PLAT

COMPANY UNIT PETROLEUM COMPANY LEASE EDWARDS WELL NO. 1-18H
 SECTION 18 TOWNSHIP 2-N RANGE 20-ECM LOCATION 236' FSL 750' FEL
 COUNTY BEAVER STATE OKLAHOMA TOPOGRAPHY AND VEGETATION PASTURE
 LATITUDE 36°37'54.05" LONGITUDE -100°56'20.35" NAD83 ELEVATION 2696' NGVD29 DATE STAKED 7/3/14
 DIRECTION FROM NEAREST TOWN APPROXIMATELY 6.0 MILES WEST OF BRYANS CORNER, OKLAHOMA



- WELL LEGEND**
- PERMITTED
 - ◇ DRY HOLE
 - OIL
 - ☆ GAS
 - ★ OIL/GAS
 - ✱ PLUGGED OIL
 - ✱ PLUGGED GAS
 - ✱ PLUGGED OIL/GAS

- NOTE:**
1. This plat is intended for Oklahoma Corporation Commission Permit purposes only and is NOT to be relied upon as a boundary survey and is NOT to be used to convey or establish real property interests.
 2. Bearings and dimensions shown are based on Geodetic Azimuth and Ground distance. All X,Y coordinates are based on NAD83, Oklahoma North Zone, U.S. Feet.
 3. X,Y Coordinates were derived from GPS RTK methods and are only accurate within +/- 10 feet.

THIS IS TO CERTIFY THAT THE ABOVE PLAT WAS PREPARED FROM FIELD NOTES OF ACTUAL SURVEYS MADE BY MYSELF OR OTHERS UNDER MY SUPERVISION AND THAT THE SAME ARE TRUE, AND CORRECT TO THE BEST OF MY KNOWLEDGE AND BELIEF.

SIGNED: DATED: 7/7/14



APEX
SURVEYING & MAPPING, INC.
TEXAS * OKLAHOMA * KANSAS
8330 CANYON DRIVE AMARILLO, TEXAS 79119
306-353-7231
Certificate of Authorization No. 3415, Exp. June 30, 2016

UNIT PETROLEUM COMPANY
A Subsidiary of Unit Corporation
P.O. Box 186
Booker, TX 78005

| | |
|-----------|---------|
| FIELD: | KB, GPS |
| DRAWN: | SDT |
| DATE: | 7/7/14 |
| CHECKED: | MLS |
| REVISION: | |

JOB NO. 214-556-1.1

