

Oklahoma Corporation Commission
Oil & Gas Conservation Division
Post Office Box 52000
Oklahoma City, Oklahoma 73152-2000
Rule 165: 10-3-25

Form 1002A

API No.: 35047247830000

Completion Report

Spud Date: January 27, 2014

OTC Prod. Unit No.: 047-214150

Drilling Finished Date: February 19, 2014

1st Prod Date: August 01, 2014

Completion Date: August 01, 2014

Drill Type: HORIZONTAL HOLE

Well Name: EASON 27_22-21N-3W 1WHX

Purchaser/Measurer:

Location: GARFIELD 27 21N 3W
NE SE SE SE
639 FSL 190 FEL of 1/4 SEC
Derrick Elevation: 1223 Ground Elevation: 1200

First Sales Date:

Operator: DEVON ENERGY PRODUCTION CO LP 20751

333 W SHERIDAN AVE DEC 34.428
OKLAHOMA CITY, OK 73102-5010

Completion Type	
X	Single Zone
	Multiple Zone
	Commingled

Location Exception	
Order No	
	621043
	622397

Increased Density	
Order No	
There are no Increased Density records to display.	

Casing and Cement							
Type	Size	Weight	Grade	Feet	PSI	SAX	Top of CMT
CONDUCTOR	20"	94#	J-55	65		8	SURFACE
SURFACE	13 3/8"	54.5#	J-55	510		520	SURFACE
INTERMEDIATE	9 5/8"	40#	HCK-55	5408		790	2880
PRODUCTION	5.5"	17#	P-110 RY	14358		2410	4909

Liner								
Type	Size	Weight	Grade	Length	PSI	SAX	Top Depth	Bottom Depth
There are no Liner records to display.								

Total Depth: 14358

Packer	
Depth	Brand & Type
There are no Packer records to display.	

Plug	
Depth	Plug Type
There are no Plug records to display.	

Initial Test Data										
Test Date	Formation	Oil BBL/Day	Oil-Gravity (API)	Gas MCF/Day	Gas-Oil Ratio Cu FT/BBL	Water BBL/Day	Pumpin or Flowing	Initial Shut-In Pressure	Choke Size	Flow Tubing Pressure
Aug 12, 2014	WOODFORD	41		51	1244	3787	PUMPING		20	

Completion and Test Data by Producing Formation										
Formation Name: WOODFORD			Code: 319WDFD			Class: OIL				
Spacing Orders				Perforated Intervals						
Order No	Unit Size			From			To			
619904	640			5900			14229			
619336	640									
623017	MULTIUNIT									
Acid Volumes				Fracture Treatments						
1044 BBLs OF ACID (25 STAGES)				266,774 BBLs OF FLUID						
				3,912,114 #30/50						
				24,245 100 MESH SAND						

Formation	Top
WOODFORD	5946
MISSISSIPPIAN	5519

Were open hole logs run? No
Date last log run:
Were unusual drilling circumstances encountered? No
Explanation:

Other Remarks
IRREGULAR SECTION.
OCC: FLE ORDERS HAVE NOT BEEN ISSUED. WE HAVE ACCEPTED OPERATORS DATA AS SUBMITTED.

Lateral Holes

Sec: 22 TWP: 21N RGE: 3W County: GARFIELD

SW NE SE NE

1931 FNL 391 FEL of 1/4 SEC

Depth of Deviation: 5542 Radius of Turn: 331 Direction: 358 Total Length: 8485

Measured Total Depth: 14358 True Vertical Depth: 5741 End Pt. Location From Release, Unit or Property Line: 391

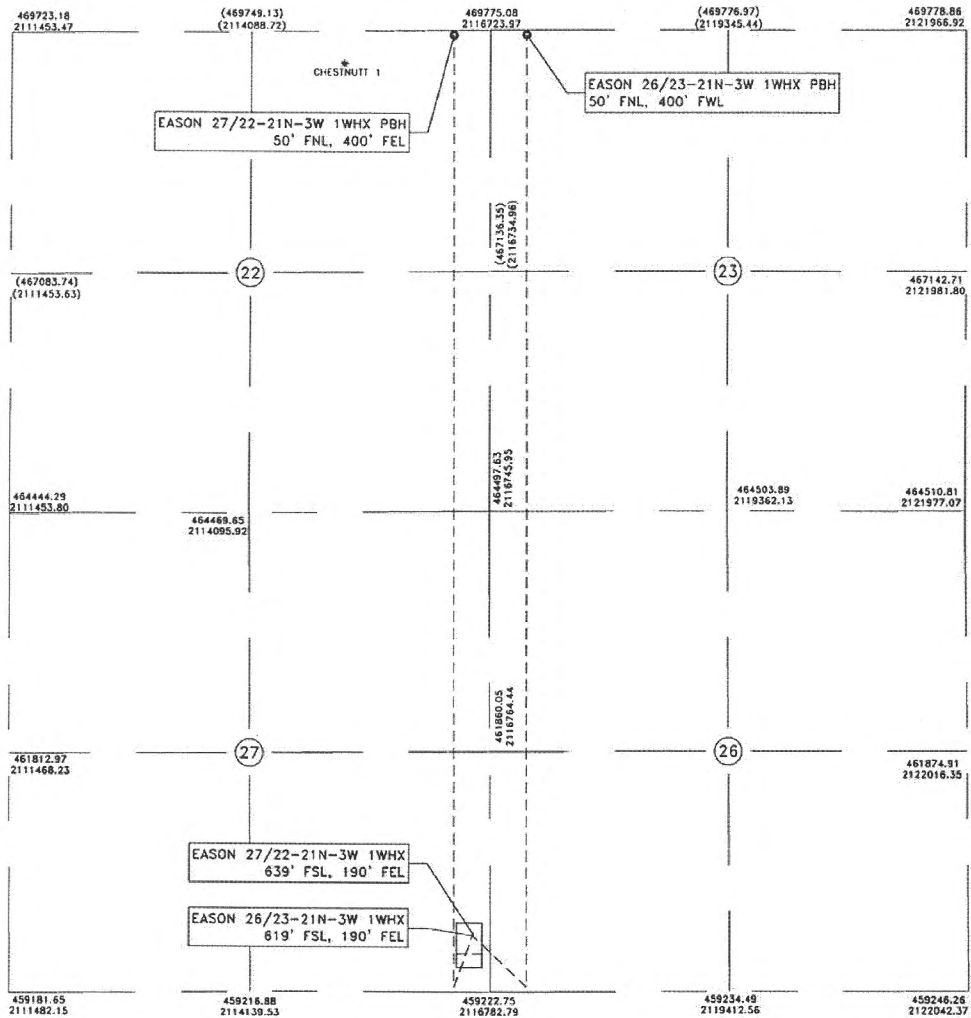
FOR COMMISSION USE ONLY

1125670

Status: Accepted

SECTIONS 22, 23, 26, 27,
T 21 N - R 3 W, I.M.,
GARFIELD COUNTY, OKLAHOMA

BASIS OF BEARINGS
GRID NORTH
NAD 83, OK NORTH
VERT. DATUM = NAVD 88



NOTE: COORDINATES SHOWN IN (PARENTHESES)
ARE BASED UPON LOCAL OCCUPATION AND IMPROVEMENTS OR
CALCULATED PER PROPORTIONAL MEASUREMENT

LEGEND

- SURFACE HOLE LOCATION =
- PROPOSED BOTTOM HOLE LOCATION =
- EXISTING WELL =
- PROPOSED LATERAL =

LICENSED PROFESSIONAL LAND SURVEYOR
ADAM K. HINDS
1/9/14
1781
OKLAHOMA

Adam K. Hinds 1/9/14
ADAM K. HINDS
OKLAHOMA L.P.L.S. NO.: 1781

NOTE:
This plat represents a proposed well site and does not represent a true boundary survey. This location has been very carefully staked on the ground according to the latest G.L.O. records, U.S.G.S. maps and photographs available to us, but its accuracy is not guaranteed. Review this plat and notify Gateway Services Group, LLC immediately of any possible discrepancy.

Devon Energy Production Company, LP.
333 W. Sheridan
Oklahoma City, OK 73102

Gateway
Gateway Services Group, LLC

PO. BOX 960
MEEKER, OK 74855
OFF. (405) 273-0954
FAX (405) 273-0580
C.A. NO. 4091 (LS)
EXP. DATE 6-30-2014

WELL LOCATIONS
EASON 26/23-21N-3W 1WHX,
EASON 27/22-21N-3W 1WHX
SECTIONS 22, 23, 26, 27,
T 21 N - R 3 W, I.M.,
GARFIELD COUNTY, OKLAHOMA

DRAWN BY: RLG	DATE: 12/27/13	CHK'D: BJH	
GATEWAY NO.: 13-1541-000G R2		SCALE: 1"=2000'	
W.B.S. NO.: XX-101079, XX-101101			
REV.	DWN.	DESCRIPTION	DATE
1	RLG	RESTAKE	1/8/14
2	RLG	MOVED PBH'S	1/9/14