

Oklahoma Corporation Commission  
Oil & Gas Conservation Division  
Post Office Box 52000  
Oklahoma City, Oklahoma 73152-2000  
Rule 165: 10-3-25

Form 1002A

API No.: 35007256850000

**Completion Report**

Spud Date: June 30, 2014

OTC Prod. Unit No.:

Drilling Finished Date: July 14, 2014

1st Prod Date: August 21, 2014

Completion Date: August 21, 2014

**Drill Type: HORIZONTAL HOLE**

Well Name: SARGENT 1-18H

Purchaser/Measurer:

Location: BEAVER 19 2N 21E CM  
NW NE NE NW  
200 FNL 2300 FWL of 1/4 SEC  
Derrick Elevation: 2846 Ground Elevation: 2828

First Sales Date:

Operator: UNIT PETROLEUM COMPANY 16711  
PO BOX 702500  
7130 S LEWIS AVE STE 1000  
TULSA, OK 74170-2500

Completion Type	
X	Single Zone
	Multiple Zone
	Commingled

Location Exception	
Order No	
	627428
	630080

Increased Density	
Order No	
There are no Increased Density records to display.	

Casing and Cement							
Type	Size	Weight	Grade	Feet	PSI	SAX	Top of CMT
SURFACE	9 5/8	36	J-55	1970		645	SURFACE
INTERMEDIATE	7	26	L-80	6359		285	3490

Liner								
Type	Size	Weight	Grade	Length	PSI	SAX	Top Depth	Bottom Depth
There are no Liner records to display.								

**Total Depth: 11182**

Packer	
Depth	Brand & Type
There are no Packer records to display.	

Plug	
Depth	Plug Type
There are no Plug records to display.	

Initial Test Data										
Test Date	Formation	Oil BBL/Day	Oil-Gravity (API)	Gas MCF/Day	Gas-Oil Ratio Cu FT/BBL	Water BBL/Day	Pumpin or Flowing	Initial Shut-In Pressure	Choke Size	Flow Tubing Pressure
Aug 21, 2014	MARMATON	39	40	91	2333	589	PUMPING			

Completion and Test Data by Producing Formation										
Formation Name: MARMATON			Code: 404MRMN			Class: OIL				
<b>Spacing Orders</b>				<b>Perforated Intervals</b>						
<b>Order No</b>	<b>Unit Size</b>			<b>From</b>			<b>To</b>			
627928	640			There are no Perf. Intervals records to display.						
<b>Acid Volumes</b>				<b>Fracture Treatments</b>						
There are no Acid Volume records to display.				There are no Fracture Treatments records to display.						

Formation	Top
BASE OF HEEBNER	4986
TORONTO	5044
LANSING	5136
MARKER 3	5780
KC CHECKERBOARD	5920
MARKER	6084
BASE OF LANSING/KC	6187
HOT SHALE	6272
UPPER MARMATON	6328

Were open hole logs run? No

Date last log run:

Were unusual drilling circumstances encountered? No

Explanation:

Other Remarks
OPEN HOLE - FROM 6359' TO TOTAL DEPTH OF 11182'. NO FRAC, ISIP - VACUUM FORMATIONS: BASE OF HEEBNER - 4917 TVD; TORONTO - 4975 TVD; LANSING - 5067 TVD; MARKER 3 - 5706 TVD; KC CHECKERBOARD - 5828 TVD; MARKER - 5950 TVD; BASE OF LANSING/KC - 6012 TVD; HOT SHALE - 6056 TVD; UPPER MARMATON - 6080 TVD. IRREGULAR SECTION. OCC: FLE ORDER HAS NOT BEEN ISSUED. WE HAVE ACCEPTED OPERATORS DATA AS SUBMITTED.

**Lateral Holes**

Sec: 18 TWP: 2N RGE: 21E County: BEAVER Meridian: CM

NW NE NE NW

165 FNL 2300 FWL of 1/4 SEC

Depth of Deviation: 5530 Radius of Turn: 597 Direction: 4 Total Length: 4854

Measured Total Depth: 11182 True Vertical Depth: 6114 End Pt. Location From Release, Unit or Property Line: 165

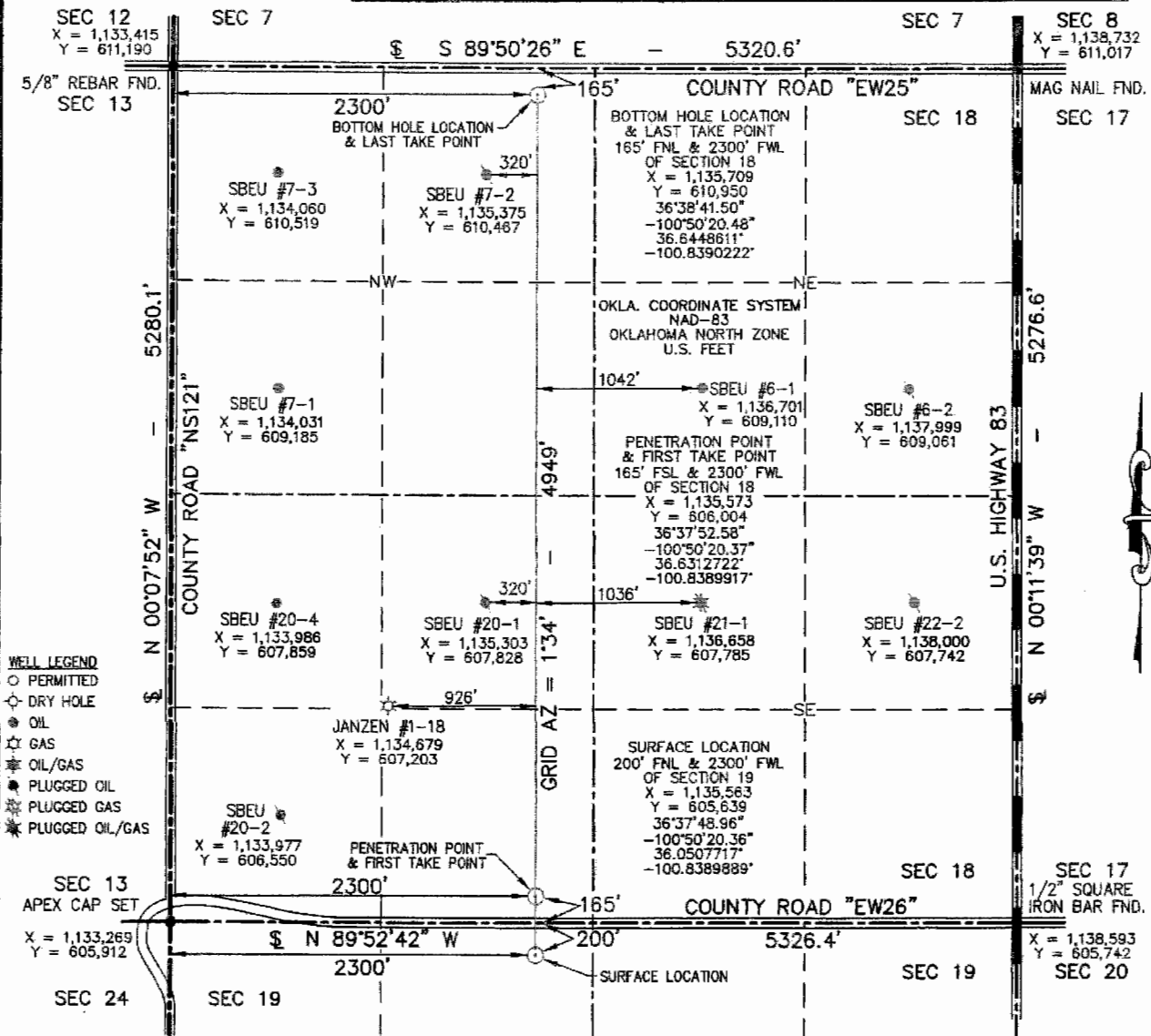
**FOR COMMISSION USE ONLY**

1125674

Status: Accepted

# PROPOSED NEW WELL LOCATION PLAT

COMPANY UNIT PETROLEUM COMPANY LEASE SARGENT WELL NO. 1-18H  
 SECTION 19 TOWNSHIP 2-N RANGE 21-ECM LOCATION 200' FNL 2300' FWL  
 COUNTY BEAVER STATE OKLAHOMA TOPOGRAPHY AND VEGETATION PASTURE  
 LATITUDE 36°37'48.96" LONGITUDE -100°50'20.36" NAD83 ELEVATION 2828' NGVD29 DATE STAKED 1/23/14  
 DIRECTION FROM NEAREST TOWN APPROXIMATELY 1.5 MILES NORTHWEST OF BRYANS CORNER, OKLAHOMA

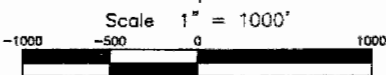


**NOTE:**

- This plat is intended for Oklahoma Corporation Commission Permit purposes only and is NOT to be relied upon as a boundary survey and is NOT to be used to convey or establish real property interests.
- Bearings and dimensions shown are based on Geodetic Azimuth and Ground distance. All X,Y coordinates are based on NAD83, Oklahoma North Zone, U.S. Feet.
- X,Y Coordinates were derived from GPS RTK methods and are only accurate within +/- 10 feet.

THIS IS TO CERTIFY THAT THE ABOVE PLAT WAS PREPARED FROM FIELD NOTES OF ACTUAL SURVEYS MADE BY MYSELF OR OTHERS UNDER MY SUPERVISION AND THAT THE SAME ARE TRUE AND CORRECT TO THE BEST OF MY KNOWLEDGE AND BELIEF.

SIGNED: \_\_\_\_\_ DATED: 1/24/14



**APEX**  
 SURVEYING & MAPPING, INC.  
 TEXAS • OKLAHOMA • KANSAS  
 8330 CANYON DRIVE AMARILLO, TEXAS 79119 806-353-7231  
 105 HACKBERRY TRAIL CANADIAN, TEXAS 79014 806-323-9773  
 Certificate of Authorization No. 3415, Exp. June 30, 2014

**UNIT PETROLEUM COMPANY**  
 A Subsidiary of Unit Corporation  
 P.O. Box 186 Booker, TX 78005

FIELD:	SL,GPS
DRAWN:	MLS
DATE:	1/24/14
CHECKED:	CBM
REVISION:	RE-STAKE
JOB NO.	213-757-1.1

