

Oklahoma Corporation Commission
Oil & Gas Conservation Division
Post Office Box 52000
Oklahoma City, Oklahoma 73152-2000
Rule 165: 10-3-25

Form 1002A

API No.: 35085212000000

Completion Report

Spud Date: December 18, 2013

OTC Prod. Unit No.: 085-214028

Drilling Finished Date: March 09, 2014

1st Prod Date: August 08, 2014

Completion Date: July 23, 2014

Drill Type: HORIZONTAL HOLE

Well Name: HOLDEN 1-15H10

Purchaser/Measurer:

Location: LOVE 15 7S 1E
NE NE NW NW
215 FNL 1150 FWL of 1/4 SEC
Derrick Elevation: 0 Ground Elevation: 870

First Sales Date: 08/08/2014

Operator: XTO ENERGY INC 21003

810 HOUSTON ST
FORT WORTH, TX 76102-6203

Completion Type	
X	Single Zone
	Multiple Zone
	Commingled

Location Exception	
Order No	
620042	

Increased Density	
Order No	
There are no Increased Density records to display.	

Casing and Cement							
Type	Size	Weight	Grade	Feet	PSI	SAX	Top of CMT
CONDUCTOR	16	118	J-55	105		21	SURFACE
SURFACE	9 5/8	36	J-55	1987		510	SURFACE
PRODUCTION	5 1/2	23	P-110	19064		1770	10400

Liner								
Type	Size	Weight	Grade	Length	PSI	SAX	Top Depth	Bottom Depth
There are no Liner records to display.								

Total Depth: 19064

Packer	
Depth	Brand & Type
There are no Packer records to display.	

Plug	
Depth	Plug Type
There are no Plug records to display.	

Initial Test Data										
Test Date	Formation	Oil BBL/Day	Oil-Gravity (API)	Gas MCF/Day	Gas-Oil Ratio Cu FT/BBL	Water BBL/Day	Pumpin or Flowing	Initial Shut-In Pressure	Choke Size	Flow Tubing Pressure
Aug 14, 2014	WOODFORD	537	45	1211	2255	1561	FLOWING		24/64	1250

Completion and Test Data by Producing Formation										
Formation Name: WOODFORD			Code: 319WDFD			Class: OIL				
Spacing Orders				Perforated Intervals						
Order No	Unit Size			From			To			
619772	640			14729			18960			
Acid Volumes				Fracture Treatments						
36,000 GALLONS				12 STAGES - 152,907 BTW, 721,780 POUNDS 100 MESH, 1,544,700 POUNDS 40/70, 850,020 POUNDS CRC 40/70						

Formation	Top
WOODFORD	14489

Were open hole logs run? No

Date last log run:

Were unusual drilling circumstances encountered? No

Explanation:

Other Remarks
IRREGULAR SECTION. OCC: FLE ORDER HAS NOT BEEN ISSUED. WE HAVE ACCEPTED OPERATORS DATA AS SUBMITTED.

Lateral Holes
Sec: 10 TWP: 7S RGE: 1E County: LOVE
SE NW NW NW
394 FNL 399 FWL of 1/4 SEC
Depth of Deviation: 13700 Radius of Turn: 748 Direction: 351 Total Length: 5158
Measured Total Depth: 19064 True Vertical Depth: 14287 End Pt. Location From Release, Unit or Property Line: 394

FOR COMMISSION USE ONLY
Status: Accepted
1125797

API NO. 085-21200
 OTC PROD. UNIT NO. 085-214028

PLEASE TYPE OR USE BLACK INK ONLY
 NOTE: Attach copy of original 1002A if recompletion

AS SUBMITTED

RECEIVED Form 1002A Rev. 2007

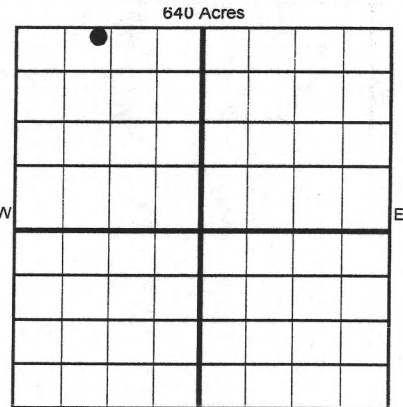
AUG 25 2014

OKLAHOMA CORPORATION COMMISSION

ORIGINAL
 AMENDED
 Reason Amended _____
 TYPE OF DRILLING OPERATION
 STRAIGHT HOLE DIRECTIONAL HOLE HORIZONTAL HOLE
 SERVICE WELL
 If directional or horizontal, see reverse for bottom hole location.

COMPLETION REPORT

COUNTY	Love	SEC	15	TWP	7S	RGE	1E	SPUD DATE	12/18/2013
LEASE NAME	Holden			WELL NO.	1-15H10			DRLG FINISHED	3/9/2014
SHL	NE 1/4 NE 1/4 NW 1/4 NW 1/4			FWL OF 1/4 SE	215' 1150'			WELL COMPLETION	7/23/2014
ELEVATION	Derrick FI GL: 870' Ground			Latitude if Known	33.954279°N			1ST PROD DATE	8/8/2014
OPERATOR NAME	XTO ENERGY INC.			OTC/OCC OPERATOR NO.	21003				
ADDRESS	210 PARK AVENUE, SUITE 2350								
CITY	OKLAHOMA CITY	STATE	OKLAHOMA	ZIP	73102				



COMPLETION TYPE

<input checked="" type="checkbox"/> SINGLE ZONE
<input type="checkbox"/> MULTIPLE ZONE
Application Date _____
<input type="checkbox"/> COMMINGLED
Application Date _____
LOCATION EXCEPTION ORDER NO. 620042
INCREASED DENSITY ORDER NO. _____

CASING & CEMENT (Form 1002C must be attached)

TYPE	SIZE	WEIGHT	GRADE	FEET	PSI	SAX	TOP OF CMI	
Conductor	16"	118	J-55	105			Surface	
Surface	9 5/8"	36	J-55	1982		510	Surface	
Intermediate								
Production	5 1/2"	23	P-110	19,064		1770	10,400'	
Liner								
							TOTAL DEPTH	19,064'

PACKER @ _____ BRAND & TYPE _____ PLUG @ _____ TYPE _____ PLUG @ _____ TYPE _____
 PACKER @ _____ BRAND & TYPE _____ PLUG @ _____ TYPE _____ PLUG @ _____ TYPE _____

COMPLETION & TEST DATA BY PRODUCING FORMATION

FORMATION	WOODFORD <i>319 WDFD</i>						
SPACING & SPACING ORDER NUMBER	640: 619772						
CLASS: Oil, Gas, Dry, Inj, Disp, Comm Disp, Svc	Oil						
PERFORATED INTERVALS	12 Stages 14729-18960'						
ACID/VOLUME Fracture Treatment (Fluids/Prop Amounts)	36,000 gals 152,907 BTW 721,780# 100 Mesh 1,544,7000# 40/70 850,020# CRC 40/70						

Reported to Free Focus

INITIAL TEST DATA	<input type="checkbox"/> Request minimum gas allowable (165:10-17-7)	Gas Purchaser/Measurer _____	1st Sales Date	8/8/2014
INITIAL TEST DATE	8/14/2014			
OIL-BBL/DAY	537			
OIL-GRAVITY (API)	45			
GAS-MCF/DAY	1211			
GAS-OIL RATIO CU FT/BBL	2255			
WATER-BBL/DAY	1561			
PUMPING OR FLOWING	Flowing			
INITIAL SHUT-IN PRESSURE	N/A			
CHOKE SIZE	24/64"			
FLOW CASING PRESSURE	1250			

A record of the formations drilled through, and pertinent remarks are presented on the reverse. I declare that I have knowledge of the contents of this report and am authorized by my organization to make this report, which was prepared by me or under my supervision and direction, with the data and facts stated herein to be true, correct, and complete to the best of my knowledge and belief.

Debbie Waggoner
 SIGNATURE: Debbie Waggoner, Regulatory Analyst
 NAME (PRINT OR TYPE)
 DATE: 8/22/2014
 PHONE NUMBER: 405-232-4011
 ADDRESS: 210 Park Avenue, Suite 2350, Oklahoma City, Oklahoma 73102
 EMAIL ADDRESS: debbie.waggoner@xtoenergy.com

PLEASE TYPE OR USE BLACK INK ONLY
FORMATION RECORD

Give formation names and tops, if available, or descriptions and thickness of formations drilled through. Show intervals cored or drillstem tested.

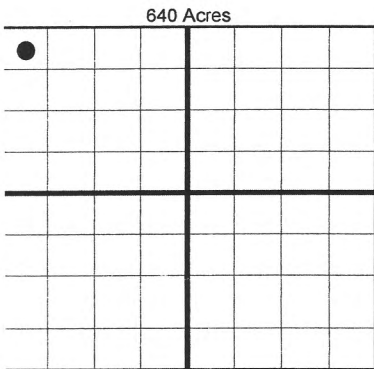
LEASE NAME HOLDEN WELL NO. 1-15H10

NAMES OF FORMATIONS	TOP
WOODFORD	14,489'

FOR COMMISSION USE ONLY	
ITD on file <input type="checkbox"/> YES <input type="checkbox"/> NO	
APPROVED _____ DISAPPROVED _____	2) Reject Codes

Were open hole logs run? _____ yes <input checked="" type="checkbox"/> no
Date Last log was run _____
Was CO ₂ encountered? _____ yes <input checked="" type="checkbox"/> no at what depths?
Was H ₂ S encountered? _____ yes <input checked="" type="checkbox"/> no at what depths?
Were unusual drilling circumstances encountered? _____ yes <input checked="" type="checkbox"/> no If yes, briefly explain.

Other remarks: **IRREGULAR SECTION**



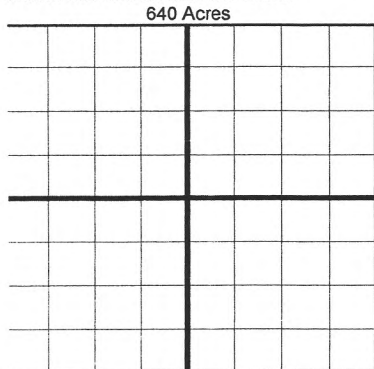
BOTTOM HOLE LOCATION FOR DIRECTIONAL HOLE						
SEC	TWP	RGE	COUNTY			
Spot Location	1/4	1/4	1/4	1/4	Feet From 1/4 Sec Lines	FSL FWL
Measured Total Depth	True Vertical Depth		BHL From Lease, Unit, or Property Line:			

BOTTOM HOLE LOCATION FOR HORIZONTAL HOLE: (LATERALS)						
LATERAL #1						
SEC	TWP	RGE	COUNTY			
10	7S	1E	Love			
Spot Location	SE 1/4	NW 1/4	NW 1/4	NW 1/4	Feet From 1/4 Sec Lines	394' FNL 399' FWL
Depth of Deviation	13700'		Radius of Turn	748.0'	Direction	351.6° Total Length 5158.6'
Measured Total Depth	19064'		True Vertical Depth	14287'	End Pt Location From Lease, Unit or Property Line: 394' FNL & 399' FWL	

If more than three drainholes are proposed, attach a separate sheet indicating the necessary information.

Direction must be stated in degrees azimuth. Please note, the horizontal drainhole and its end point must be located within the boundaries of the lease or spacing unit.

Directional surveys are required for all drainholes and directional wells.



LATERAL #2						
SEC	TWP	RGE	COUNTY			
Spot Location	1/4	1/4	1/4	1/4	Feet From 1/4 Sec Lines	FSL FWL
Depth of Deviation	Radius of Turn		Direction		Total Length	
Measured Total Depth	True Vertical Depth		End Pt Location From Lease, Unit or Property Line:			

LATERAL #3						
SEC	TWP	RGE	COUNTY			
Spot Location	1/4	1/4	1/4	1/4	Feet From 1/4 Sec Lines	FSL FWL
Depth of Deviation	Radius of Turn		Direction		Total Length	
Measured Total Depth	True Vertical Depth		End Pt Location From Lease, Unit or Property Line:			